

Product datasheet for **RC219261**

EED (NM_003797) Human Tagged ORF Clone

Product data:

Product Type:	Expression Plasmids
Product Name:	EED (NM_003797) Human Tagged ORF Clone
Tag:	Myc-DDK
Symbol:	EED
Synonyms:	COGIS; HEED; WAIT1
Mammalian Cell Selection:	Neomycin
Vector:	pCMV6-Entry (PS100001)
E. coli Selection:	Kanamycin (25 ug/mL)



[View online »](#)

ORF Nucleotide Sequence:

>RC219261 representing NM_003797
 Red=Cloning site Blue=ORF Green=Tags(s)

TTTTGTAATACGACTCACTATAGGGCGGCCGGAATTCGTCGACTGGATCCGGTACCGAGGAGATCTGCC
 GCC**CGGATCGCC**

ATGTCGAGAGGGAAAGTGTGCGACTGCGCCGGCGGGAACAGACATGCCTGCGGCCAAGAAGCAGAAGCTGA
 GCAGTGACGAGAACAGCAATCCAGACCTCTCTGGAGACGAGAATGATGACGCTGTGAGTATAGAAAAGTGG
 TACAAACACTGAACGCCCTGATACACCTACAAACAGCCAAATGCACCTGGAAGGAAAAGTTGGGAAAAG
 GGAAAATGGAAAGTCAAAGAAATGCAAAATATTCTTTCAAATGTGTAATAGTCTCAAGGAAGATCATAACC
 AACCATTTGTTGGAGTTCAGTTAACTGGCACAGTAAAGAAGGAGATCCATTAGTGTTCGAAGTGTAGG
 AAGCAACAGAGTTACCTTGATGAATGTCATTACAAGGAGAAAATCCGGTTGTTGCAATCTTACGTGGAT
 GCTGATGCTGATGAAAACTTTACACTGTGCATGGACCTATGATAGCAATACGAGCCATCTCTGCTGG
 CTGTAGCTGGATCTAGAGGCATAATTAGGATAATAAATCTATAACAATGCAGTGTATAAAGCACTATGT
 TGGCCATGGAAAATGCTATCAATGAGCTGAAATTCATCCAAGAGATCCAAATCTTCTCCTGTCAGTAAGT
 AAAGATCATGCTTACGATTATGGAATATCCAGACGGACACTCTGGTGGCAATATTTGGAGGCGTAGAAG
 GGCACAGAGATGAAGTTCTAAGTGTGATTATGATCTTTTGGGTGAAAAATAATGTCCTGTGGTATGGA
 TCATTCTTAAACTTTGGAGGATCAATCAAAGAGAATGATGAATGCAATTAAGGAATCTTATGATTAT
 AATCCAAATAAACTAACAGGCCATTTATTTCTCAGAAAATCCATTTTCTGATTTTTCTACCAGAGACA
 TACATAGGAATTATGTTGATTGTGTGCGATGGTTAGGCGATTTGATACTTTCTAAGTCTTGTGAAAATGC
 CATTGTGTGCTGGAAACCTGGCAAGATGGAAGATGATATAGATAAAAATTAACCCAGTGAATCTAATGTG
 ACTATTCTTGGGCGATTTGATTACAGCCAGTGTGACATTTGGTACATGAGGTTTTCTATGGATTTCTGGC
 AAAAGATGCTTGCATTGGGCAATCAAGTTGGCAAACTTTATGTTTGGGATTTAGAAGTAGAAGATCCTCA
 TAAAGCCAAATGTACAACACTGACTCATATAAATGTGGTGTGCTATTGACAAAACAGTTTTAGCAGG
 GATAGCAGCATTCTATAGCTGTTTGTGATGATGCCAGTATTTGGCGCTGGGATCGACTTCA

ACGCGTACGCGGCCGCTCGAGCAGAAACTCATCTCAGAAGAGGATCTGGCAGCAATGATATCCTGGATT
 ACAAGGATGACGACGATAAGGTTTAA

Protein Sequence:

>RC219261 representing NM_003797
 Red=Cloning site Green=Tags(s)

MSEREVSTAPAGTDMPAAKKQKLSSDENSNPDLSGDENDDAVSIESGTNTERPDTPNPNAPGRKSWGK
 GKWKSKKCKYSFKCVNSLKDHNQPLFGVQFNWHSKEGDPLVFATVGSNRVTLYECHSQGEIRLLQSYVD
 ADADENFYTCAWTYDSNTSHPLLAVAGSRGIIRIINPITMQCIKHVYVGHGNAINELKFHPRDPNLLL SVS
 KDHALRLWNIQDTLVAIFGGVEGHRDEVLSADYDLLGEKIMSCGMDHSLKLWRINSKRMMNAIKESYDY
 NPNKTNRPFI SQKIHFPDFSTRDIHRNYVDCVRWLGDLILSKSCENAIVCWKPGKMEDDIDKIKPSES NV
 TILGRFDYSQCDIWYMRFSMDFWQKMLALGNQVGLYVWDLEVEDPHKAKCTTLTHKCGAAIRQTSFSR
 DSSILIAVCCDASIWRDRLR

TRTRPLEQKLISEEDLAANDILDYKDDDDKV

Chromatograms:

https://cdn.origene.com/chromatograms/mk6043_a02.zip

Restriction Sites:

SgfI-MluI

Cloning Scheme:


ACCN: NM_003797

ORF Size: 1323 bp

OTI Disclaimer: The molecular sequence of this clone aligns with the gene accession number as a point of reference only. However, individual transcript sequences of the same gene can differ through naturally occurring variations (e.g. polymorphisms), each with its own valid existence. This clone is substantially in agreement with the reference, but a complete review of all prevailing variants is recommended prior to use. [More info](#)

OTI Annotation: This clone was engineered to express the complete ORF with an expression tag. Expression varies depending on the nature of the gene.

Components: The ORF clone is ion-exchange column purified and shipped in a 2D barcoded Matrix tube containing 10ug of transfection-ready, dried plasmid DNA (reconstitute with 100 ul of water).

Reconstitution Method:

1. Centrifuge at 5,000xg for 5min.
2. Carefully open the tube and add 100ul of sterile water to dissolve the DNA.
3. Close the tube and incubate for 10 minutes at room temperature.
4. Briefly vortex the tube and then do a quick spin (less than 5000xg) to concentrate the liquid at the bottom.
5. Store the suspended plasmid at -20°C. The DNA is stable for at least one year from date of shipping when stored at -20°C.

RefSeq: [NM_003797.5](#)

RefSeq Size: 2006 bp

RefSeq ORF: 1326 bp

Locus ID: 8726

UniProt ID: [O75530](#)

Cytogenetics: 11q14.2

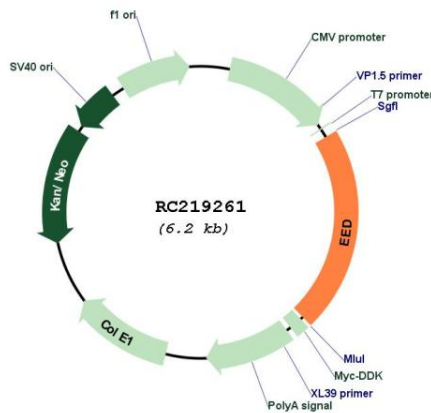
Domains: WD40

Protein Families: Druggable Genome, Transcription Factors

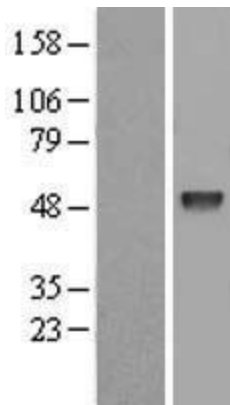
MW: 50 kDa

Gene Summary: This gene encodes a member of the Polycomb-group (PcG) family. PcG family members form multimeric protein complexes, which are involved in maintaining the transcriptional repressive state of genes over successive cell generations. This protein interacts with enhancer of zeste 2, the cytoplasmic tail of integrin beta7, immunodeficiency virus type 1 (HIV-1) MA protein, and histone deacetylase proteins. This protein mediates repression of gene activity through histone deacetylation, and may act as a specific regulator of integrin function. Two transcript variants encoding distinct isoforms have been identified for this gene. [provided by RefSeq, Jul 2008]

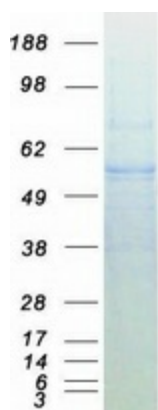
Product images:



Circular map for RC219261



Western blot validation of overexpression lysate (Cat# [LY401248]) using anti-DDK antibody (Cat# [TA50011-100]). Left: Cell lysates from untransfected HEK293T cells; Right: Cell lysates from HEK293T cells transfected with RC219261 using transfection reagent MegaTran 2.0 (Cat# [TT210002]).



Coomassie blue staining of purified EED protein (Cat# [TP319261]). The protein was produced from HEK293T cells transfected with EED cDNA clone (Cat# RC219261) using MegaTran 2.0 (Cat# [TT210002]).