

Product datasheet for RC219255

BAT3 (BAG6) (NM_001098534) Human Tagged ORF Clone

Product data:

Product Type:	Expression Plasmids
Product Name:	BAT3 (BAG6) (NM_001098534) Human Tagged ORF Clone
Tag:	Myc-DDK
Symbol:	BAT3
Synonyms:	BAG-6; BAT3; D6S52E; G3
Mammalian Cell Selection:	Neomycin
Vector:	pCMV6-Entry (PS100001)
E. coli Selection:	Kanamycin (25 ug/mL)
ORF Nucleotide Sequence:	>RC219255 ORF sequence Red=Cloning site Blue=ORF Green=Tags(s)

TTTTGTAATACGACTCACTATAGGGCGGCCGGGAATTCGTCGACTGGATCCGGTACCGAGGAGATCTGCC
GCC**CGATCGCC**

ATGGAGCCTAATGATAGTACCAGTACCGCTGTGGAGGAGCCTGACAGCTTGGAGGTGTTGGTGAAGACCT
TGGACTCTCAAACCTCGTACCTTTATTGTGGGGGCCAGATGAATGTAAAAGAGTTAAGGAGCACATTGC
TGCCTCTGTCAGCATCCCATCTGAAAAACAACGGCTCATTTACCAGGGACGAGTTCTGCAAGATGATAAG
AAGCTTCAGGAATACAATGTTGGGGAAAGTTATCCACCTGGTGAACGGGCTCCTCCTCAGACTCACC
TCCCTTCTGGGGCATCTTCTGGGACGGGTCTGCCTCAGCCACTCATGGTGGGGATCCCCCCTGGTAC
TCGGGGGCTGGGCCTCTGTTTCATGACCGGAATGCCAACAGCTATGTCATGGTTGGAACCTTCAATCTT
CCTAGTGACGGCTCTGCTGTGGATGTTACATCAACATGGAACAGGCCCGGATTGAGAGTGGACCCCGGG
TACGGCTGGTGTGGCTCAGCACATGATCAGGGATATACAGACCTTACTATCCCGGATGGAGTGTGAGG
AGGGCCCCAACCGCAGCACAGTCAGCCGCCCGCAGCCACCGGCTGTGACCCCGGAGCCAGTAGCCTTG
AGCTCTCAAACATCAGAACCAGTTGAAAGTGAAGCACCTCCCCGGGAGCCATGGAGGCAGAAGAAGTGG
AGGAGCGTGGCCAGCCAGAACCCGGAGCTACTCCTGGCCAGCCCCAGCGGGCCCAACCTGCCCC
GGAAACAATGCACCAACCATCCTTCCCCTGCGGAGTATGTCGAGGTGCTCCAGGAGCTACAGCGGCTG
GAGAGTCGCTCCAGCCCTTCTTGACGCGCTACTACGAGTTCTGGGTGCTGCTGCCACCAGCGACTACA
ATAACAATCAGAGGGCCGGGAGGAGATCAGCGGTTGATCAACTTGGTAGGGGAGAGCCTGCGACTGCT
GGCAACACCTTTGTTGCACTGTCTGACCTGCGTGAATCTGGCCTGCACGCCCCACGACACCTGCAT
GTGGTCCGGCCTATGTCTCACTACACCACCCCATGGTGTCCAGCAGGCAGCCATCCCATACAGATCA
ATGTGGGAACCACTGTGACCATGACAGGAAATGGGACTCGCCCCCCTCACTCCAATGCAGAGGCACC
TCCCCCTGGTCTGGCAGGCCTCATCCGTGGCTCCGTCTTCTACCAATGTCGAGTCTCAGCTGAGGGG
GCTCCCCGCCAGGTCCAGCTCCCCGCCAGCCACCGAGGCTCATCCGATTCCCACCAGA
GTGTGAAACCCGTGGTTCATGATGCACATGAACATTCAAGATTCTGGCACACAGCCTGGTGGTGTCCGAG
TGCTCCACTGGCCCCCTGGGACCCCTGGTTCATGGCAAACCTGGGACAGCAGGTGCCAGGCTCCCA



[View online »](#)

ACAGCTCCAACCCGGGTGGTATTGCCCGGCCACTCCTCCACAGGCTCGGCCTTCCCATCCTGGAGGGC
CCCCAGTCTCTGGGACTGCAGGGCGCCGGTCTGGGTACCAATGCCTCGTTGGCCAGATGGTGAAGCG
CCTTGTGGGGCAGCTTCTTATGCAGCCAGTCTTGTGGCTCAGGGGACCCAGGTATGGCTCCACCGCCA
GCCCTGCCACTGCTTCTGCCAGTGTGGCACCACCAACACAGCTACCACAGTGGCCCCGCTCTGGGG
GGCCTGCCAGCCTCCACCCACCCTCAACCCTCCATGGTGTATCTTCACTTCTCAGTCTCTGGGAA
CCTGTAGGGCTGCAGGGCCAGGGCTGGAGGGTCTGGTGTGGCTTCTCCACCATCACTGTGGCGATG
CCTGGTGTCCCTGCCTTCTCCAAGGCATGACTGACTTCTTGCAGGCAACACAGACAGCCCTCCACCAC
CCCCACTCCTCCACCCACCCTGCCAGAGCAGACACCATGCCCCACCAGGCTCCCTTCTGG
TGGCGCAGGGAGTCTGGAGGCCTGGGTCTTGGAGCCTGTACCCGGAGTTTTTACCTCAGTGGTGCAG
GGTGTGCTCAGCTCCCTGCTGGGCTCCCTGGGGCTCGGGCTGGCAGCAGTAAAAGTATTGCTGCCTTCA
TACAACGCCTCAGTGGATCCAGCAACATCTTTGAGCCTGGAGCTGATGGGGCCCTGGATTCTTTGGGGC
CTTGCTTCTCTTCTGTGCCAGAACTTCTCTATGGTGGACGTAGTGTGCTTCTCCATGGGCATTTCCAG
CCACTACAACGGCTCCAGCCCCAGCTGCGATCCTTCTCCACCAGCACTACCTGGTGGTCAAGAGCCCA
CAGCCAGTAACATCCGGATGGCAACCCACACATTGATCACGGGGCTAGAAGAGTATGTGCGGGAGAGTTT
TTCCTTGGTGCAGTTTCCAGCAGGTGTGGACATCATCCGGACAAACCTGGAATTTCTCCAAGAGCAGTTT
AATAGCATTGCTGCGCATGTGCTGCATTGCACAGATAGTGGATTTGGGGCCCGGTTGCTGGAGTTGTGTA
ACCAAGGCCTGTTTGAATGCCTGGCCCTAAACCTGCACTGCTTGGGGGGACAGCAGATGGAGCTTGTGCTG
TGTATCAATGGCCGAATTCGTGATGTCTCGTGGGGTGAATCCCTCCTTGGTGAAGTGGCTGACCACT
ATGATGGGACTGAGGCTTCAAGTGGTACTGGAGCAGTGCCTGTAGGCCCTGATGCCATTCTCAGATACG
TTCGCAGGGTTGGTATCCCCCAGCCACTTCTGAGGAGCCAAATGGAAGTTCAGGGAGCAGAAAGAGC
TCCCCCTGAGCCTCAGCGGGAGAATGCTTCCCCAGCCCTGGAACAACAGCAGAAAGAGCCATGTCCCGA
GGTCCACCTCCTGCTCCTGAGGGGGCTCCCGGGATGAACAGGATGGAGCTTCACTGAGACAGAACCTT
GGGCAGCTGCAGTCCCCCAGAATGGGTCCCTATTATCCAGCAGGACATTCAGAGCCAGCGGAAGGTGAA
ACCGCAGCCCCCTCTGAGTGTGCTACCTCAGTGGTATGCCTGCCAAGAGACGCAAGACGATGCAGGGT
GAGGGCCCCAGCTGCTTCTCTCAGAGGCTGTGAGCCGGGCAGCTAAGGCAGCCGGAGCTCGGCCCTGA
CGAGCCCCGAGAGCCTGAGCCGGGACCTGGAGGCACCAGAGGTTCAAGAGAGCTACAGGCAGCAGCTCCG
GTCTGATATACAAAACGACTGCAGGAAGACCCCAACTACAGTCCCAGCGCTTCCCAATGCCAGCGG
GCCTTTGCTGATGATCCT

ACGCGTACGCGGGCGCTCGAGCAGAACTCATCTCAGAAGAGGATCTGGCAGCAATGATATCCTGGATT
ACAAGGATGACGACGATAAGGTTTAA

Protein Sequence: >RC219255 protein sequence
 Red=Cloning site Green=Tags(s)

```
MEPNSTSTAVEEPDSLEVLVKTLDSQTRTFIVGAQMNVKEFKEHIAASVSIPISEKQRLIYQGRVLQDDK
KLQEYNVGGKVIHLVERAPPQTHLPSGASSGTGSASATHGGGSPGTRGPGASVHDRNANSYVMVGTFFNL
PSDGSADVHINMEQAPIQSEPRVRLVMAQHMRDIQTLLSRMECRGGPQPQHSQPPPQPAVTPPEPVAL
SSQTSEPVSEAPPREPMEAEVEERAPAQNPELTPGPAPAGPTPAPETNAPNHPSPAIEYVEVLQELQRL
ESRLQPFLLQRYEYVLGAAATTDYNNHHEGREEDQRLINLVGESLRLGNTFVALSDLRCNLACTPPRHLH
VVRPMSHYTTMPVLQAAIPIQINVTMTGNGTRPPPTPNAEAPPPGPGQASSVAPSSTNVSSAEG
APPPGAPPPATSHPRVIRISHQSEPVMMHMNIQDSGTQPGGVPSAPTGPLGPPGHGQTLGQQVPGFP
TAPTRVVIARPTPPQARPSHPGGPPVSGTLQGAGLGTNASLAQMVSGLVGQLMQPVLVAQGTGPMAPP
APATASASAGTTNTATTAGPAPGGPAQPPPTPQPSMADLQFSQLLGNLLGPAGPGAGGSGVASPTITVAM
PGVPAFLQGMTDFLQATQTAPPPPPPPPPPAPEQQTMPGGSPSGGAGSPGGLGLESLSPEFFTSVVQ
GVLSSLGSLGARAGSSEIAAFIQRLSGSSNIFEPGADGALGFFGALLSLLCQNF SMVDVVMLLHGHFQ
PLQRLQPLRSFFHQHYLGGQEPTPSNIRMATHTLITGLEEYVRESFSLVQVQPGVDIIRTNLFLQEQL
NSIAAHVLHCTDSGFGARLLELCNQGLFECLALNLHCLGGQMEAAVINGRIRMSRGNPSLVSWLTT
MMGLRLQVLEHMPVGPDAILRYVRRVGDPPQPLPEEPMEVQGAERASPEPQRENASAPGTTAEAMS
RGGPPAPEGGSRDEQDGAETEPWAAAAPPEWVPIIQQDIQSQRKVKPQPLSDAYLSGMPAKRRKTMQG
EGPQLLLSEAVSRAAKAAGARPLTSPESL SRDLEAPEVQESYRQQLRSDIQKRLQEDPNYSPQRFPAQR
AFADDP
```

TRTRPLEQKLISEEDLAANDILDYKDDDDKV

Chromatograms: https://cdn.origene.com/chromatograms/mk6168_e04.zip

Restriction Sites: SgfI-MluI

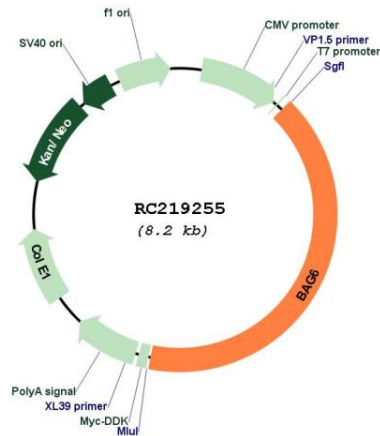
Cloning Scheme:



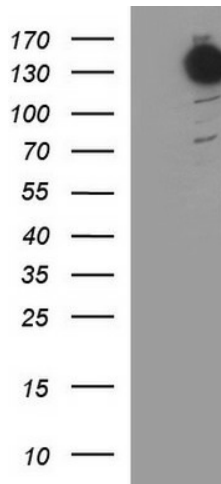
ACCN: NM_001098534

ORF Size: 3378 bp

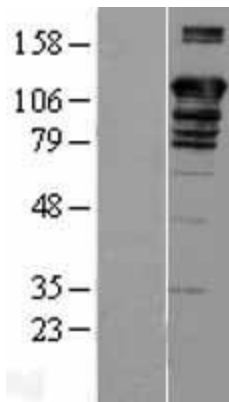
OTI Disclaimer:	<p>Due to the inherent nature of this plasmid, standard methods to replicate additional amounts of DNA in E. coli are highly likely to result in mutations and/or rearrangements. Therefore, OriGene does not guarantee the capability to replicate this plasmid DNA. Additional amounts of DNA can be purchased from OriGene with batch-specific, full-sequence verification at a reduced cost. Please contact our customer care team at custsupport@origene.com or by calling 301.340.3188 option 3 for pricing and delivery.</p> <p>The molecular sequence of this clone aligns with the gene accession number as a point of reference only. However, individual transcript sequences of the same gene can differ through naturally occurring variations (e.g. polymorphisms), each with its own valid existence. This clone is substantially in agreement with the reference, but a complete review of all prevailing variants is recommended prior to use. More info</p>
OTI Annotation:	This clone was engineered to express the complete ORF with an expression tag. Expression varies depending on the nature of the gene.
Components:	The ORF clone is ion-exchange column purified and shipped in a 2D barcoded Matrix tube containing 10ug of transfection-ready, dried plasmid DNA (reconstitute with 100 ul of water).
Reconstitution Method:	<ol style="list-style-type: none"> 1. Centrifuge at 5,000xg for 5min. 2. Carefully open the tube and add 100ul of sterile water to dissolve the DNA. 3. Close the tube and incubate for 10 minutes at room temperature. 4. Briefly vortex the tube and then do a quick spin (less than 5000xg) to concentrate the liquid at the bottom. 5. Store the suspended plasmid at -20°C. The DNA is stable for at least one year from date of shipping when stored at -20°C.
RefSeq:	NM_001098534.2
RefSeq Size:	3660 bp
RefSeq ORF:	3381 bp
Locus ID:	7917
UniProt ID:	P46379
Cytogenetics:	6p21.33
Protein Families:	Druggable Genome, Stem cell - Pluripotency
MW:	118.7 kDa
Gene Summary:	<p>This gene was first characterized as part of a cluster of genes located within the human major histocompatibility complex class III region. This gene encodes a nuclear protein that is cleaved by caspase 3 and is implicated in the control of apoptosis. In addition, the protein forms a complex with E1A binding protein p300 and is required for the acetylation of p53 in response to DNA damage. Multiple transcript variants encoding different isoforms have been found for this gene. [provided by RefSeq, Jul 2008]</p>

Product images:


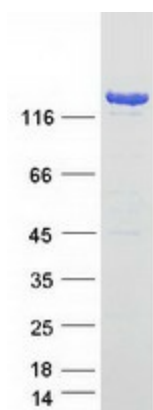
Circular map for RC219255



HEK293T cells were transfected with the pCMV6-ENTRY control (Cat# [PS100001], Left lane) or pCMV6-ENTRY BAG6 (Cat# RC219255, Right lane) cDNA for 48 hrs and lysed. Equivalent amounts of cell lysates (5 ug per lane) were separated by SDS-PAGE and immunoblotted with anti-BAG6 (Cat# [TA590842]). Positive lysates [LY426025] (100ug) and [LC426025] (20ug) can be purchased separately from OriGene.



Western blot validation of overexpression lysate (Cat# [LY420631]) using anti-DDK antibody (Cat# [TA50011-100]). Left: Cell lysates from untransfected HEK293T cells; Right: Cell lysates from HEK293T cells transfected with RC219255 using transfection reagent MegaTran 2.0 (Cat# [TT210002]).



Coomassie blue staining of purified BAG6 protein (Cat# [TP319255]). The protein was produced from HEK293T cells transfected with BAG6 cDNA clone (Cat# RC219255) using MegaTran 2.0 (Cat# [TT210002]).