

## Product datasheet for **RC219252**

### **MFSD6 (NM\_017694) Human Tagged ORF Clone**

#### **Product data:**

Product Type:	Expression Plasmids
Product Name:	MFSD6 (NM_017694) Human Tagged ORF Clone
Tag:	Myc-DDK
Symbol:	MFSD6
Synonyms:	hMMR2; MMR2
Mammalian Cell Selection:	Neomycin
Vector:	pCMV6-Entry (PS100001)
E. coli Selection:	Kanamycin (25 ug/mL)



[View online »](#)

ORF Nucleotide  
Sequence:

>RC219252 representing NM\_017694  
Red=Cloning site Blue=ORF Green=Tags(s)

TTTTGTAATACGACTCACTATAGGGCGGCCGGGAATTCGTCGACTGGATCCGGTACCGAGGAGATCTGCC  
GCC**CGGATCGCC**

ATGGCAGATGATAAAGTTGCTATCTTAACGGATGATGAAGAGGAACAGAAGAGAAAGTATGTGCTTGCAG  
ATCCCTTTAATGGTATTTCCAGGAACCAAGAACCTTCGAATGAAACACCTTCCTCCACAGAAACATC  
TGCTATTCCTGAGGAGGAATAGACTGGATAGAGAAACATTGTGTTAAGATAAAACACGATCTTCTAATT  
TCCAAGTCTTTTATTTTTCTTTACTCTGCCTATGGCTCTCTCTATCCCTTTTGCCTGTGTATTACA  
AACAGCTGGGAATGTCTCCAAGCCAGAGTGGACTACTAGTAGGTATTCGTTACTTCATTGAATCTGCAG  
TGCCCCCTTTGGGGTGTAGTTGCAGACCGCTTAAAAAAGGCAAAATTGCCTCCTCTTTTCTCTTTT  
TGTTGGGTTTTATTCAACCTGGCATTGGATTTGTCAAACCTGCTACCTTGAGATGTGTACCAAAGATTC  
GCCCAACAACCTACCCCAACATGCAAGTACCAGTAACTATCCTGCCAACAATCTTCTTTACCTC  
TTTCTCACCATATCACCAAAAATGCGTGAGAAAAGAAACCTTTTGGAAACAGGGCTCAATGTCTCAGAC  
ACCGTTACTTTGCCAACAGCTCCAACATGAACAGTGAACCCACTCTGCAGCCCCAGACAGGTGAAATTA  
CTAACCGTATGATGGACTTGACTTTGAACTCAAGCACAGCAACCCCTGTCTCCCCAGGAAGCGTAACCAA  
GGAGACAACCACTGTTATTGTTACCACCACCAATCTTTACCTTCTGACCAAGTCATGCTTGTATTGAT  
CAACAAGAAGTTGAAGCTATATTCTTGGTGATCTTGGTAGTTGTCATAATAGGAGAATTTTTCAAGTGCCT  
CTTCTGTCACAATCGTAGACACGGTCACTCCAGTATCTGGGAAAACACAGAGATCGCTATGGGTTGCA  
GCGCATGTGGGGTCCCTGGGCTGGGGCTGGCGATGCTGTCTGTGGGCATCGGGATCGACTACACCCAC  
ATCGAAGTGCTCATCGATGGAAGGGGTGAAGCCCCCGAGTACAGGAATTACCAGATCGTCTTCATCG  
TCTTCGGGCTTCTCATGACCATGGCCTTGATCGTTGCCACTCAGTTCGGTTCCGCTACAACCAATTTCAA  
AAACGATGATTCTAAAGGAAAGAGGTGGAGATCCCGCAGGTGGAAAGGAACAACCTACAGAGTCCTCT  
GAGGAGACACCAACCACCAAGCCACTCGCAGGCCTTCAACTTTTGGGACTTAATCAAGCTGCTCTGCA  
GCGTGCAGTATGGCTCAGTGCTGTTTGGGCTTGGTTCATGGGTTTTGGATATGGCTTCTGTTACCTT  
TCTCTACTGGCATTGGAAGACCTCAATGGAACACTACAACCTCTTTGGGGTCTGTTCACTCAGTCTGAGT  
GTGTCTGAGCTGACAGCATATTTTTTAGTCACAAGCTTATTGAATTGATCGGCCACATCAGGGTCTGT  
ACATTGGCCTGGCCTGCAATACGGCTCGCTATATTTATATTTCTACCTGGAGAATGCCTGGACTGTTCT  
CCCCATGGAAGTCTTCAAGGAGTGACACACCGGCCATCTGGGCAGCATGCATTTCTTACCTCAGTGCA  
GCCGTTCCCCCTGAGCTGAGGACATCTGCTCAGGGCATCTGCAGGGCCTCACCTGGGTTTGGGAAGAG  
GATGTGGTGCCATGATCGGAGGCGTGTAGTCAATTTTTGGGGCTGCTGCAACCTCCGAGGAATTGG  
CATGGCCTGCTTGGTGATCCTACTGCTCTTTGCCCTGATCCAGTGGCTGGCAGTGCCAGATGAGGAAGAA  
GACAAGACAATGTTGGCAGAAAGAAATTCCTGTTCCCTCCAGTCCCCTTCTATAGCAACCATCGACTTGG  
TACAGCAACAGACAGAAGATGTCATGCCACGATTGAGCCAGACTTCCACCCAAGAAAACCTAAGCACCA  
GGAAGAACAGGAAGATGTGAACAAACAGCCTGGGGAGTCAGCTCTTCTCCCTGGGTGACCTTTGTCTAT  
GCACTCTACCAAAATTAAGAGATGATGCAACTCACAAAGAGACAACCGTCTTCTGAGATACAGCCTTTAC  
AGGGGACCAATGAGAATAGGGAAAATTTCTCTGCTGGTAGAGCCAGCCTGTCCCATGTGAGACTCACTC  
TGACCCATCTAGAAACCAAGCCATCCCCTGACGCAGCAGCATCTCAGACGCAGACCAGCCCGCTCACCCC  
AGTGTGGACCCGTCACAGAGGAGAGTGAAGAGCAGCAGGCTCAGCTGGCCGCGGAGGACAC

**ACGCGT**ACGCGGCCGCTCGAGCAGAAACTCATCTCAGAAGAGGATCTGGCAGCAAATGATATCCTGGATT  
ACAAGGATGACGACGATAAGGTTTAA

**Protein Sequence:** >RC219252 representing NM\_017694  
Red=Cloning site Green=Tags(s)

MADDKVAILTDEEEQKRKYVLADPFNGISREPEPPSNETPSSTETSAIPEEEIDWIEKHCVKINNDLLI  
SKVYFFFFYSAYGSLYPLL PVYYKQLGMSPSQSGLLVGIRYFIEFCSAPFWGVVADRFKKGKIVLLFSL  
CWVLFNLGIGFVKPATLRCVPKIRPTTHPTNASHQLTILPTNSSFTSFLTISPMMREKRNLLLETGLNVSD  
TVTLPTAPNMNSEPTLQPQTGEITNRMDLTLNSSTATPVSPGVTKETTTVIVTTTKSLPSDQVMLVYD  
QQEVEAIFLVILVVVIIGEFFSASSVTIVDTVTLQYLGKHRDRYGLQRMWGLGWGLAMLSVGIGIDYTH  
IEVLIDGKCKPPEYRNYQIVFIVFGVLMTMLIVATQFRFRYNHFKNDDSKGKEVEIPQVERNNSTESS  
EETPTTTSHSQAFNFWDLIKLLCSVQYGSVLFVAWFMGFGYGFVFTFLYWHLEDLNGTTTLFGVCSVLSH  
VSELTAYFFSHKLIELIGHIRVLYIGLACNTARYIYISYLENAWTVLPMVQLQGVTHAAIWAACISYLSA  
AVPELRTSAQGILQGLHLGLGRGCGAMIGGVLVNYFGAAATFRGIGMACLVILLLFALIQLAVPDEEE  
DKTMLAERIPVPSSPVPDIATIDL VQQQTEDVMPRIEPRLPKKTQKQEEQEDVNKPAWGVSSSPVWTFVY  
ALYQIKEMMQLTRDNRASEIQPLQGTNENRENSPAGRAQPVPCETHSDPSRNQSPDAAAASQTQTSAPHP  
SVDPCTEESEEQQAQLAAGGH

TRTRPLEQKLI SEEDLAANDILDYKDDDDKV

**Chromatograms:** [https://cdn.origene.com/chromatograms/mk8009\\_f04.zip](https://cdn.origene.com/chromatograms/mk8009_f04.zip)

**Restriction Sites:** Sgfl-Mlul

**Cloning Scheme:**


**ACCN:** NM\_017694

**ORF Size:** 2373 bp

**OTI Disclaimer:** The molecular sequence of this clone aligns with the gene accession number as a point of reference only. However, individual transcript sequences of the same gene can differ through naturally occurring variations (e.g. polymorphisms), each with its own valid existence. This clone is substantially in agreement with the reference, but a complete review of all prevailing variants is recommended prior to use. [More info](#)

**OTI Annotation:** This clone was engineered to express the complete ORF with an expression tag. Expression varies depending on the nature of the gene.

**Components:** The ORF clone is ion-exchange column purified and shipped in a 2D barcoded Matrix tube containing 10ug of transfection-ready, dried plasmid DNA (reconstitute with 100 ul of water).

**Reconstitution Method:**

1. Centrifuge at 5,000xg for 5min.
2. Carefully open the tube and add 100ul of sterile water to dissolve the DNA.
3. Close the tube and incubate for 10 minutes at room temperature.
4. Briefly vortex the tube and then do a quick spin (less than 5000xg) to concentrate the liquid at the bottom.
5. Store the suspended plasmid at -20°C. The DNA is stable for at least one year from date of shipping when stored at -20°C.

**RefSeq:** [NM\\_017694.2](#), [NP\\_060164.2](#)

**RefSeq Size:** 4320 bp

**RefSeq ORF:** 2376 bp

**Locus ID:** 54842

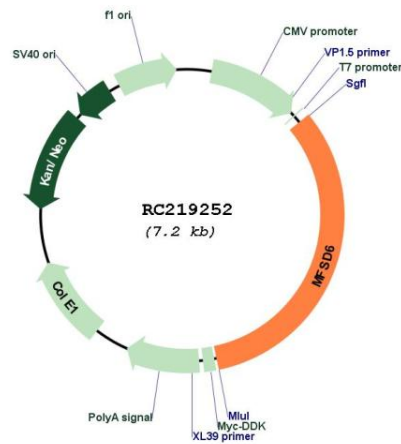
**UniProt ID:** [Q6ZSS7](#)

**Cytogenetics:** 2q32.2

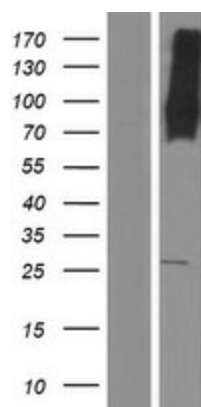
**Protein Families:** Transmembrane

**MW:** 87.9 kDa

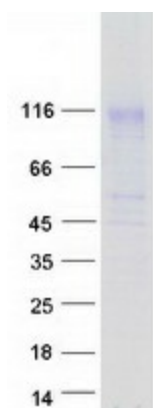
**Product images:**



Circular map for RC219252



Western blot validation of overexpression lysate (Cat# [LY413606]) using anti-DDK antibody (Cat# [TA50011-100]). Left: Cell lysates from untransfected HEK293T cells; Right: Cell lysates from HEK293T cells transfected with RC219252 using transfection reagent MegaTran 2.0 (Cat# [TT210002]).



Coomassie blue staining of purified MFSD6 protein (Cat# [TP319252]). The protein was produced from HEK293T cells transfected with MFSD6 cDNA clone (Cat# RC219252) using MegaTran 2.0 (Cat# [TT210002]).