

Product datasheet for **RC219248**

AMN (NM_030943) Human Tagged ORF Clone

Product data:

Product Type:	Expression Plasmids
Product Name:	AMN (NM_030943) Human Tagged ORF Clone
Tag:	Myc-DDK
Symbol:	AMN
Synonyms:	amniotless; IGS2; PRO1028
Mammalian Cell Selection:	Neomycin
Vector:	pCMV6-Entry (PS100001)
E. coli Selection:	Kanamycin (25 ug/mL)



[View online »](#)

ORF Nucleotide Sequence:

>RC219248 representing NM_030943
 Red=Cloning site Blue=ORF Green=Tags(s)

TTTTGTAATACGACTCACTATAGGGCGGCCGGGAATTCGTCGACTGGATCCGGTACCGAGGAGATCTGCC
 GCC**CGCATCGCC**

ATGGGCGTCTGGGCCGGTCTGCTGTGGCTGCAGCTCTGCGCACTGACCCAGGCGGTCTCCAACTCT
 GGGTCCCCAACACGACTTCGACGTCGACGCAACTGGAGCCAGAACCGACCCCGTGCGCCGGCGCGC
 CGTTGAGTTCGCCGGGACAAGATGGTGTGTCAGTCTGGTGAAGAAGGTACGCCGTCTCAGACATGCTC
 CTGCCGCTGGATGGGAACTCGTCTGGCTTCAGGAGCCGGATTCCGGCTCTCAGACGTGGGCTCGCACC
 TGGACTGTGGCGCGGGCAACTGCCGCTTCCGCGACTCTGACCGCTTCTCCTGGCATGACCCGCACCT
 GTGGCGCTCTGGGGACGAGGCACCTGGCCTCTTCTTCGTGGACGCCGAGCGCGTGCCTGCCCCACGAC
 GACGCTCTTTCCGCTAGTGCCTCTCCGCGTGGGGCTCGGCCCTGGCGTAGCCCCGTGCGTGTCC
 GCAGCATCTCGGCTCTGGCCGGACGTTACGCGCGACGAGGACCTGGCTGTTTTCTGGCGTCCCGCC
 GGGCCGCTACGCTTCCACGGGCGGGCGCGCTGAGCGTGGGCCCGAGGACTGCGCGGACCCGTCCGGC
 TGGCTCTGCGGCAACCGCGAGGCCGACCGTGGATCTGCGCGGCCCTGTCCAGCCCTGGGCGGCCGT
 GTCCCCAGGCCGCTGCCACTTTGCCCTCCGGCCCCAGGGGCACTGTGTGACCTCTGTGGAGCCGTTGT
 GTTGCTGACCCACGGCCCCGATTTGACCTGGAGCGGTACCGGGCGCGGATACTGGACACCTTCTGGGT
 CTGCCCTCAGTACCACGGGCTGCAGGTGGCCGTGTCCAAGGTGCCACGCTCGTCCCGGCTCCGTGAGGCCG
 ATACGGAGATCCAGGTGGTGTGGTGGAGAATGGGCCGAGACAGGCGGAGCGGGCGGCTGGCCCGGGC
 CCTCTGGCGGACGTCGCCGAGAACGGCGAGGCCCTCGGCGTCTGGAGGCGACCATGCGGGAGTCGGGC
 GCACACGCTCTGGGACGCTCCGCGGCTGGGCTGGCGGGCGGCGTGGCGGCTGCCGTGCTGCTGGCGCTGC
 TGGTCTGCTGGTGGCGCCCGCTGCTGCGCCGCGGGGAGGCTCAGGTGGAGGAGGACGAGGCGGCGC
 GGCCCGGCTGGAGCGCCCTCGGCTTCCGCAACCCGGTGTTCGACGTGACGGCCCTCCGAGGAGCTGCC
 CTGCCGCGGCGGCTCAGCCTGGTTCGAAGGCGGCCGACAGCACCAGCCACAGTTACTTCGTCAACC
 CTCTGTTCCGCGGGGCCGAGGCCGAGGCC

ACGCGTACGCGGCCGCTCGAGCAGAACTCATCTCAGAAGAGGATCTGGCAGCAAATGATATCCTGGATT
 ACAAGGATGACGACGATAAGGTTTAA

Protein Sequence:

>RC219248 representing NM_030943
 Red=Cloning site Green=Tags(s)

MGVLRVLLWLQCALTQAVSKLWVPNTDFDVAANWSQNRTPCAGGAVEFPADKMVSVLVQEGHAVSDML
 LPLDGELVLASGAGFGVSDVGSHLDCGAGEPAVFRSDRFSWHDPHLWRSGDEAPGLFFVDAERVPCRHD
 DVFFPPSASFVGLGPGASPVVRVRSISALGRFTTRDEDLAVFLASRAGRFRFHGPGALSVGPEDCADPSG
 CVCGNAEAQPWICALLQPLGGRCPPQAACHFALRPQGQCCDLGAVVLLTHGPAFDLERYRARIIDTFLG
 LPQYHGLQYAVSKVPRSSRLREADTEIQVVLVENGPEPETGGAGRLARALLADVAENGEALGVLEATMRESG
 AHVWGSSAAGLAGVAAAALLVLLVAPPLLRAGRLRWRHEAAAPAGAPLGFNRNPVFDVTASEELP
 LPRRLSLVPKAAADSTSHSYFVNPLFAGAEAEA

TRTRPLEQKLISEEDLAANDILDYKDDDDKV

Chromatograms:

https://cdn.origene.com/chromatograms/mk8011_b08.zip

Restriction Sites:

Sgfl-Mlul

Cloning Scheme:


ACCN: NM_030943

ORF Size: 1359 bp

OTI Disclaimer: The molecular sequence of this clone aligns with the gene accession number as a point of reference only. However, individual transcript sequences of the same gene can differ through naturally occurring variations (e.g. polymorphisms), each with its own valid existence. This clone is substantially in agreement with the reference, but a complete review of all prevailing variants is recommended prior to use. [More info](#)

OTI Annotation: This clone was engineered to express the complete ORF with an expression tag. Expression varies depending on the nature of the gene.

Components: The ORF clone is ion-exchange column purified and shipped in a 2D barcoded Matrix tube containing 10ug of transfection-ready, dried plasmid DNA (reconstitute with 100 ul of water).

Reconstitution Method:

1. Centrifuge at 5,000xg for 5min.
2. Carefully open the tube and add 100ul of sterile water to dissolve the DNA.
3. Close the tube and incubate for 10 minutes at room temperature.
4. Briefly vortex the tube and then do a quick spin (less than 5000xg) to concentrate the liquid at the bottom.
5. Store the suspended plasmid at -20°C. The DNA is stable for at least one year from date of shipping when stored at -20°C.

Note: Plasmids are not sterile. For experiments where strict sterility is required, filtration with 0.22um filter is required.

RefSeq: [NM_030943.1](#), [NP_112205.1](#)

RefSeq Size: 1896 bp

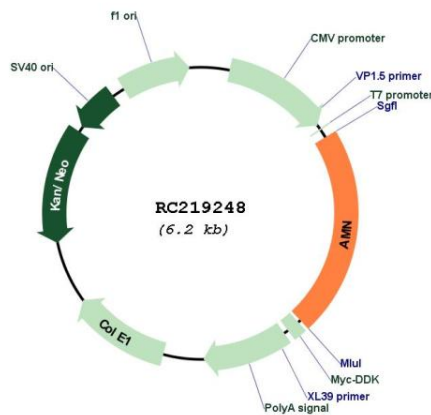
RefSeq ORF: 1362 bp

Locus ID: 81693

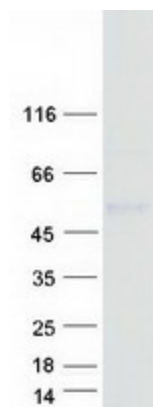
UniProt ID: [Q9BXJ7](#)
Cytogenetics: 14q32.32
Protein Families: Druggable Genome, Transmembrane
MW: 45.6 kDa

Gene Summary: The protein encoded by this gene is a type I transmembrane protein. It is thought to modulate bone morphogenetic protein (BMP) receptor function by serving as an accessory or coreceptor, and thus facilitates or hinders BMP binding. It is known that the mouse AMN gene is expressed in the extraembryonic visceral endoderm layer during gastrulation, but it is found to be mutated in amnionless mouse. The encoded protein has sequence similarity to short gastrulation (Sog) and procollagen IIA proteins in Drosophila. [provided by RefSeq, Jul 2008]

Product images:



Circular map for RC219248



Coomassie blue staining of purified AMN protein (Cat# [TP319248]). The protein was produced from HEK293T cells transfected with AMN cDNA clone (Cat# RC219248) using MegaTran 2.0 (Cat# [TT210002]).