

Product datasheet for **RC219245**

PCYOX1L (NM_024028) Human Tagged ORF Clone

Product data:

Product Type:	Expression Plasmids
Product Name:	PCYOX1L (NM_024028) Human Tagged ORF Clone
Tag:	Myc-DDK
Symbol:	PCYOX1L
Mammalian Cell Selection:	Neomycin
Vector:	pCMV6-Entry (PS100001)
E. coli Selection:	Kanamycin (25 ug/mL)



[View online »](#)

ORF Nucleotide Sequence:

>RC219245 representing NM_024028
 Red=Cloning site Blue=ORF Green=Tags(s)

TTTTGTAATACGACTCACTATAGGGCGGCCGGAATTCGTCGACTGGATCCGGTACCGAGGAGATCTGCC
 GCC**CGCATCGCC**

ATGGCCCCGCGACCCCCGCTGCTCGCCGCGTTGACCGCGCTCCTCGCCGCCCGCTGCTGGCGGAGATG
 CCCGCCCGGCAAAATCGCGGTGGTTGGGGCTGGGATTGGGGCTCTGCTGTGGCCATTTTCTCCAGCA
 GCACTTCGGACCTCGGGTGCAGATCGACGTGTACGAGAAGGGAACCGTGGGTGGCCGCTTGGCCACCATC
 TCAGTCAACAAGCAGCACTATGAGAGCGGGGCTGCCTCCTTCCACTCCCTGAGCCTGCACATGCAGGACT
 TCGTCAAGCTGCTGGGGCTGAGGCACCGCGCGAGGTGGTGGCAGGAGCGCCATCTTCGGCGGGGAGCA
 CTTTATGCTGGAGGAGACTGACTGGTACCTGCTGAACCTTTCGGCTCTGGTGGCACTATGGCATCAGC
 TTCCTGAGGCTGCAGATGGGTGGAGGAGTTCATGGAGAAGTTCATGAGGATCTATAAGTACCAGGCC
 ACGGCTATGCCTTTCGGGTGTGGAGGAGCTGCTACTACTGGGGAGTCCACCTTTGTTAACATGAC
 CCAGCACTCTGTGGCTGAGTCCCTGCTGCAGGTGGGCGTACGCAGCGCTTTATTGATGATGTCGTTTCT
 GCTGTCCTGCGGGCCAGCTATGGCCAGTACGACGCGATGCCCGCTTTCAGGAGCCATGTCACTAGCCG
 GGGCCCAAGGCAGCCTGTGGTCTGTGGAAGGAGGCAATAAGCTGGTTTGTCCGGTTTGTGAAGCTCAC
 CAAGGCCAATGTGATCCATGCCACAGTGACCTCTGTGACCCTGCACAGCACAGAGGGGAAAGCCCTGTAC
 CAGGTGGCGTATGAGAATGAGGTAGGCAACAGCTCTGACTTCTATGACATCGTGGTTCATCGCCACCCCC
 TGCACCTGGACAACAGCAGCAGCAACTTAACCTTTCAGGCTTCCACCCGCCATTGATGACGTGCAGGG
 CTCTTTCAGCCACCGTCGCTCCTTGGTCCACGGTACCTCAACTCGTCTACTTCGGTTTCCAGAC
 CCTAAGCTTTCCCTTTGCCAACATCCTTACCACAGATTTCCCAGCTTCTTCTGCACCTGGACAACA
 TCTGCCCTGTCAACATCTCTGCCAGCTTCCGGCGAAAGCAGCCCAAGGAGCAGCTGTTTGGCGAGTCCA
 GTCCCCAAGCCCTCTTTCGGACCCAGCTAAAGACCCTGTTCCGTTCTATTACTCAGTGCAGACAGCT
 GAGTGGCAGGCCATCCCTCTATGGCTCCCGCCACGCTCCCGAGTTTGCACCTCCATGACCAGCTCT
 TCTACCTCAATGCCCTGGAGTGGCGGCCAGCTCCGTGGAGGTGATGGCCGTGGCTGCCAAGAATGTGGC
 CTTGCTGGCTTACAACCCTGGTACCAGGACCTAGACAAGATTGATCAAAAAGATTTGATGCACAAGGTC
 AAGACTGAACTG

ACCGGTACGCGGCCGCTCGAGCAGAAACTCATCTCAGAAGAGGATCTGGCAGCAATGATATCCTGGATT
 ACAAGGATGACGACGATAAGGTTTAA

Protein Sequence:

>RC219245 representing NM_024028
 Red=Cloning site Green=Tags(s)

MARAPPLAAL TALLAAAAAGDAPPGKIAVVGAGIGGSAVAHFLQQHFGPRVQIDVYEKGTVGGRLATI
 SVNKQHYESGAASFHSLSLHMQDFVKLLGLRHRREVVGRSAIFGGEHFMLEETDWYLLNLFRLWWHYGIS
 FLRLQMWWVEEVMKFMRIYKYQAHGYAFSGVEELLYSLGESTFVNMTQHSVAESLLQVGVTRFIDVVVS
 AVL RASYQSAAMP AFAGAMSLAGAQGSLWSVEGNGKLVCSGLLKLTKANVIHATVTSVTLHSTEGKALY
 QVAYENEVGNSSDFYDIVVIATPLHLDNSSNLTFAGFHPPIDDVQGSFQPTVVSLVHGYLNSYFGFPD
 PKLFPFANILTTDFPFFCTLDNICPVNISASFRRKQPQEAAVWRVQSPKPLFRTQLKTLFRSYSVQTA
 EWQAHPLYGSRPTLPRFALHDQLFYLNALEWAASSVEVMAVAAKNVALLAYNRWYQDLKIDQKDLMHKV
 KTEL

TRTRPLEQKLI SEEDLAANDILDYKDDDDKV

Chromatograms:

https://cdn.origene.com/chromatograms/mk8022_c04.zip

Restriction Sites:

Sgfl-MluI

Cloning Scheme:


ACCN: NM_024028

ORF Size: 1482 bp

OTI Disclaimer: Due to the inherent nature of this plasmid, standard methods to replicate additional amounts of DNA in E. coli are highly likely to result in mutations and/or rearrangements. Therefore, OriGene does not guarantee the capability to replicate this plasmid DNA. Additional amounts of DNA can be purchased from OriGene with batch-specific, full-sequence verification at a reduced cost. Please contact our customer care team at custsupport@origene.com or by calling 301.340.3188 option 3 for pricing and delivery.

The molecular sequence of this clone aligns with the gene accession number as a point of reference only. However, individual transcript sequences of the same gene can differ through naturally occurring variations (e.g. polymorphisms), each with its own valid existence. This clone is substantially in agreement with the reference, but a complete review of all prevailing variants is recommended prior to use. [More info](#)

OTI Annotation: This clone was engineered to express the complete ORF with an expression tag. Expression varies depending on the nature of the gene.

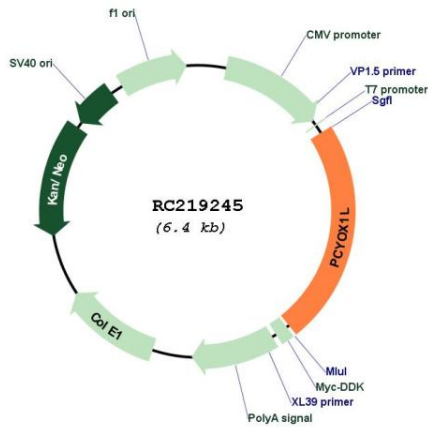
Components: The ORF clone is ion-exchange column purified and shipped in a 2D barcoded Matrix tube containing 10ug of transfection-ready, dried plasmid DNA (reconstitute with 100 ul of water).

- Reconstitution Method:**
1. Centrifuge at 5,000xg for 5min.
 2. Carefully open the tube and add 100ul of sterile water to dissolve the DNA.
 3. Close the tube and incubate for 10 minutes at room temperature.
 4. Briefly vortex the tube and then do a quick spin (less than 5000xg) to concentrate the liquid at the bottom.
 5. Store the suspended plasmid at -20°C. The DNA is stable for at least one year from date of shipping when stored at -20°C.

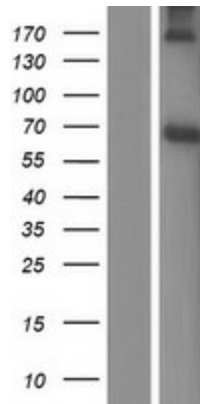
RefSeq: [NM_024028.2](#), [NP_076933.2](#)

RefSeq Size: 2506 bp
 RefSeq ORF: 1485 bp
 Locus ID: 78991
 UniProt ID: [Q8NBM8](#)
 Cytogenetics: 5q32
 MW: 54.5 kDa
 Gene Summary: Probable oxidoreductase.[UniProtKB/Swiss-Prot Function]

Product images:



Circular map for RC219245



Western blot validation of overexpression lysate (Cat# [LY411406]) using anti-DDK antibody (Cat# [TA50011-100]). Left: Cell lysates from untransfected HEK293T cells; Right: Cell lysates from HEK293T cells transfected with RC219245 using transfection reagent MegaTran 2.0 (Cat# [TT210002]).