

Product datasheet for **RC219243**

TRAF5 (NM_004619) Human Tagged ORF Clone

Product data:

Product Type:	Expression Plasmids
Product Name:	TRAF5 (NM_004619) Human Tagged ORF Clone
Tag:	Myc-DDK
Symbol:	TRAF5
Synonyms:	MGC:39780; RNF84
Mammalian Cell Selection:	Neomycin
Vector:	pCMV6-Entry (PS100001)
E. coli Selection:	Kanamycin (25 ug/mL)



[View online »](#)

ORF Nucleotide Sequence:

>RC219243 ORF sequence
 Red=Cloning site Blue=ORF Green=Tags(s)

TTTTGTAATACGACTCACTATAGGGCGGCCGGAATTCGTCGACTGGATCCGGTACCGAGGAGATCTGCC
 GCC**GCGATCGCC**

ATGGCTTATTGAGAGAGCATAAAGGTATGCCCTGTGGTTTCATCCGCCAGAATTCGGCAACTCCATT
 CCTTGGACTTTGAGCCAGTATAGAGTACCAGTTTGTGGAGCGTTGGAAGAGCGCTACAAATGTGCCTT
 CTGCCACTCGGTCTTACAACCCACCAGACAGGATGTGGCACCCTTCTGCCAGCACTGCATCCTG
 TCCCTGAGAGAATTAAACACAGTGCCAATCTGCCCTGTAGATAAAGAGGTCATCAATCTCAGGAGGTTT
 TAAAGACAATTGTTGAAAAGAGAAGTCTCACTTATATGTATATTGCAGCAATGCTCCTGGATGTAA
 TGCCAAGTTATTCTGGGCCGTACCAGGATCACCTTCAGCAGTGCTATTTCAACCTGTGCAGTGTCT
 AATGAGAAAGTCCGGGAGCCAGTCTACGAAAGACCTGAAAGAGCATTGAGTGCATCCTGTCAAGTTT
 GAAAGGAAAAATGCCTTTATTGCAAAAAGGATGTGGTAGTCATCAATCTACAGAATCATGAGGAAAACT
 GTGTCCTGAATACCCAGTATTTTGTCCCAACAATTGTGCGAAGATTATTCTAAAACTGAGGTAGATGAA
 CACCTGGCTGTATGTCTGAAGCTGAGCAAGACTGTCCTTTAAAGCACTATGGCTGTGCTGTAACGGATA
 AACGGAGGAACCTGCAGCAACATGAGCATTACGCTTACGGGAGCACATGCGTTTTGGTTTTAGAAAAGAA
 TGTCCAATTAGAAGAACAGATTTCTGACTTACACAAGAGCCTAGAACAGAAAAGAAAGTAAAAATCCAGCAG
 CTAGCAGAAAATAAAGAAACTTGAAGAGGAGTTCAAGCAGTTTGCACAGTTGTTTGGCAAAAATGGAA
 GCTTCTCCCAACATCCAGTTTTTGGCAGTCACATTGACAAGTCAGCTTGGCTAGAAGCTCAAGTGCA
 TCAATTATTACAAATGGTTAACCAGCAACAAAAATAATTTGACCTGAGACCTTTGATGGAAGCAGTTGAT
 ACAGTGAACAGAAAAATACCCTGCTAGAAAACAATGATCAAAGATTAGCCGTTTTAGAAGAGGAAAATA
 ACAAACTGATACCCACATTAATATTCATAAAGCACAGCTGAGTAAAAATGAAGAGCGATTTAAACTGCT
 GGAGGGTACTTGCTATAATGAAAAGCTCATTGGAAAGGTGACAGATTACAAGATGAAGAAGAGAGAGGCG
 GTGGATGGGCACACAGTGTCCATCTTACGCCAGTCTTCTACACCAGCCGCTGTGGCTACCGGCTCTGTG
 CTAGAGCATACCTGAATGGGGATGGGTCAGGGAGGGGGTACACCTGTCCCTATACTTTGTGGTCATGCG
 AGGAGAGTTTACTGACTGTTGCAGTGGCCATTACGGCAGAGGGTACCCTGATGCTTCTGGACCAGAGT
 GGCAAAAAGAACATTATGGAGACCTTCAAACCTGACCCCAATAGCAGCAGCTTTAAAAGACCTGATGGGG
 AGATGAACATTGCATCTGGCTGTCCCGCTTTGTGGCTCATTCTGTTTTGGAGAATGCCAAGAACGCCTA
 CATAAAGATGACTCTGTTCTTGAAGTGGCCGTGGACTTAACTGACCTGGAGGATCTC

ACGCGTACGCGGCCGCTCGAGCAGAAACTCATCTCAGAAGAGGATCTGGCAGCAAATGATATCCTGGATT
 ACAAGGATGACGACGATAAGGTTTAA

Protein Sequence:

>RC219243 protein sequence
 Red=Cloning site Green=Tags(s)

MAYSEEHKGMPCGFIRQNSGNSISLDFEPSIEYQFVERLEERYKCAFCHSVLHNPQTGCGHRFCQHCIL
 SLRELNTVPICPVDEKVIKSEQEVFKDNCCKREVLNLYVYCSNAPGCNAKIVILGRYQDHLQQCLFQPVQCS
 NEKREPVLRKDLKEHLSASCQFRKEKCLYCKKDVVVINLQNHEENLCPEYVFCPNNCAKIILKTEVDE
 HLAVCPEAEQDCPFKHYGCAVTDKRRNLQHEHSALREHMRLVLEKNVQLEEQISDLHKSLEQKESKIQQ
 LAETIKKLEKEFKQFAQLFGKNGSFLPNIQVFAHIDKSAWLEAQVHQLLQMVNQQNKFDRPLMEAVD
 TVKQKITLLENNDQRLAVLEETNKHDTHINIHKALSKNEERFKLLEGTGYNGLIWKVTDYKMKKREA
 VDGHTVSIQSFSYTSRCGYRLCARAYLNGDGSGRGSHLSLYFVVMRGEFDSLLQWPFQRVTLMLLDQS
 GKKNIMETFKPDPNSSSFKRPDGMNIIASGCPRFVAHSVLENKAYIKDDTLFLKVAVDLTDLEDL

TRTRPLEQKLISEEDLAANDILDYKDDDDKV

Chromatograms:

https://cdn.origene.com/chromatograms/mk6322_h12.zip

Restriction Sites:

Sgfl-Mlul

Cloning Scheme:


ACCN: NM_004619

ORF Size: 1671 bp

OTI Disclaimer: The molecular sequence of this clone aligns with the gene accession number as a point of reference only. However, individual transcript sequences of the same gene can differ through naturally occurring variations (e.g. polymorphisms), each with its own valid existence. This clone is substantially in agreement with the reference, but a complete review of all prevailing variants is recommended prior to use. [More info](#)

OTI Annotation: This clone was engineered to express the complete ORF with an expression tag. Expression varies depending on the nature of the gene.

Components: The ORF clone is ion-exchange column purified and shipped in a 2D barcoded Matrix tube containing 10ug of transfection-ready, dried plasmid DNA (reconstitute with 100 ul of water).

- Reconstitution Method:**
1. Centrifuge at 5,000xg for 5min.
 2. Carefully open the tube and add 100ul of sterile water to dissolve the DNA.
 3. Close the tube and incubate for 10 minutes at room temperature.
 4. Briefly vortex the tube and then do a quick spin (less than 5000xg) to concentrate the liquid at the bottom.
 5. Store the suspended plasmid at -20°C. The DNA is stable for at least one year from date of shipping when stored at -20°C.

RefSeq: [NM_004619.3](#)

RefSeq Size: 3988 bp

RefSeq ORF: 1674 bp

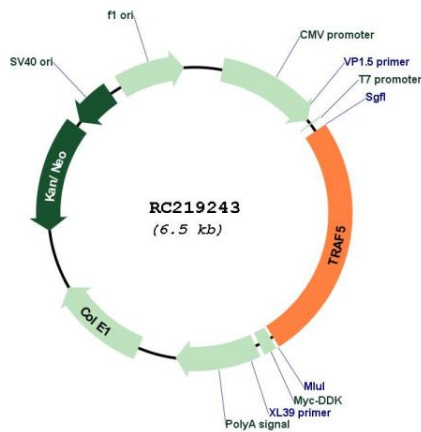
Locus ID: 7188

UniProt ID: [O00463](#)

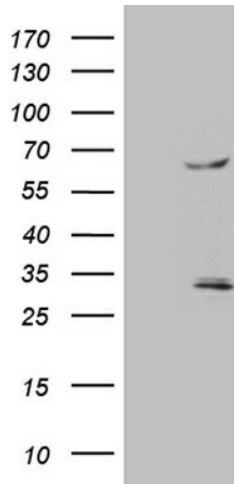
Cytogenetics: 1q32.3
Domains: zf-TRAF, RING, MATH
Protein Families: Druggable Genome
Protein Pathways: Pathways in cancer, Small cell lung cancer
MW: 64.4 kDa

Gene Summary: The scaffold protein encoded by this gene is a member of the tumor necrosis factor receptor-associated factor (TRAF) protein family and contains a meprin and TRAF homology (MATH) domain, a RING-type zinc finger, and two TRAF-type zinc fingers. TRAF proteins are associated with, and mediate signal transduction from members of the TNF receptor superfamily. This protein is one of the components of a multiple protein complex which binds to tumor necrosis factor (TNF) receptor cytoplasmic domains and mediates TNF-induced activation. Multiple transcript variants encoding different isoforms have been found for this gene. [provided by RefSeq, Jan 2016]

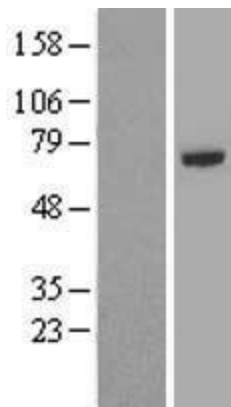
Product images:



Circular map for RC219243



HEK293T cells were transfected with the pCMV6-ENTRY control (Cat# [PS100001], Left lane) or pCMV6-ENTRY TRAF5 (Cat# RC219243, Right lane) cDNA for 48 hrs and lysed. Equivalent amounts of cell lysates (5 ug per lane) were separated by SDS-PAGE and immunoblotted with anti-TRAF5 (Cat# [TA810371])(1:500). Positive lysates [LY417875] (100ug) and [LC417875] (20ug) can be purchased separately from OriGene.



Western blot validation of overexpression lysate (Cat# [LY407875]) using anti-DDK antibody (Cat# [TA50011-100]). Left: Cell lysates from untransfected HEK293T cells; Right: Cell lysates from HEK293T cells transfected with [RC219306] using transfection reagent MegaTran 2.0 (Cat# [TT210002]).



Coomassie blue staining of purified TRAF5 protein (Cat# [TP319243]). The protein was produced from HEK293T cells transfected with TRAF5 cDNA clone (Cat# RC219243) using MegaTran 2.0 (Cat# [TT210002]).