

Product datasheet for **RC219242**

RPL7 (NM_000971) Human Tagged ORF Clone

Product data:

Product Type:	Expression Plasmids
Product Name:	RPL7 (NM_000971) Human Tagged ORF Clone
Tag:	Myc-DDK
Symbol:	RPL7
Synonyms:	humL7-1; L7
Mammalian Cell Selection:	Neomycin
Vector:	pCMV6-Entry (PS100001)
E. coli Selection:	Kanamycin (25 ug/mL)
ORF Nucleotide Sequence:	>RC219242 representing NM_000971 Red=Cloning site Blue=ORF Green=Tags(s)

TTTTGTAATACGACTCACTATAGGGCGGCCGGAATTCGTCGACTGGATCCGGTACCGAGGAGATCTGCC
GCC**CGATCGCC**

ATGGAGGGTGTAGAAGAGAAGAAGAAGGAGGTTCTGCTGTGCCAGAAACCCTTAAGAAAAAGCGAAGGA
ATTTTCGAGAGCTGAAGATCAAGCGCCTGAGAAAGAAGTTGCCCAAAGATGCTTCGAAAGGCAAGGAG
GAAGCTTATCTATGAAAAAGCAAAGCACTATCACAAAGGAATATAGGCAGATGTACAGAACTGAAATTCGA
ATGGCGAGGATGGCAAGAAAAGCTGGCAACTTCTATGTACCTGCAGAACCCAAATGGCGTTTGTCAATCA
GAATCAGAGGTATCAATGGAGTGAGCCAAAGGTTGAAAGGTGTGCAGCTTCTCGCCTTCGTCAAAT
CTTCAATGGAACCTTTGTGAAGCTCAACAAGGCTTCGATTAACATGCTGAGGATTGTAGAGCCATATATT
GCATGGGGTACCCCAATCTGAAGTCAGTAAATGAACTAATCTACAAGCGTGGTTATGGCAAATCAATA
AGAAGCGAATTGCTTTGACAGATAACGCTTTGATTGCTCGATCTCTTGGTAAATACGGCATCATCTGCAT
GGAGGATTTGATTCATGAGATCTATACTGTTGGAAAACGCTTCAAAGAGGCAAATAAATTCCTGTGGCC
TTCAAATTGCTTCTCCACGAGGTGGAATGAAGAAAAAGACCACCCATTTGTAGAAGGTGGAGATGCTG
GCAACAGGGAGGACCAGATCAACAGGCTTATTAGAAGAATGAAC

ACGCGTACGCGGCCGCTCGAGCAGAAACTCATCTCAGAAGAGGATCTGGCAGCAAATGATATCCTGGATT
ACAAGGATGACGACGATAAGGTTTAA



[View online »](#)

Protein Sequence: >RC219242 representing NM_000971
Red=Cloning site Green=Tags(s)

MEGVEEKKKEVPAVPETLKKKRRNFAELKIKRLRKKFAQKMLRKARRKLIYEKAKHYHKEYRQMYRTEIR
 MARMARKAGNFYVPAEPKLAFFVIRIRINGVSPKVRKVLQLLRQLFNGTFVKLNKASINMLRIVEPYI
 AWGYPNLKSVELIYKRGYKINKKRIALTDNALIARSLGKYGIICMEDLIHEIYTVGKRFKEANNFLWP
 FKLSSPRGGMKKKTTHFVEGGDAGNREDQINRLIRRMN

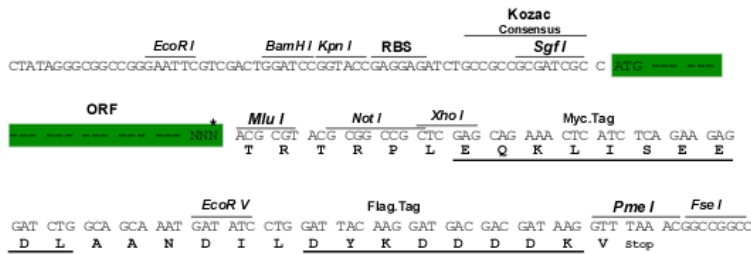
TRTRPLEQKLISEEDLAANDILDYKDDDDKV

Chromatograms: https://cdn.origene.com/chromatograms/ja1507_e08.zip

Restriction Sites: SgfI-MluI

Cloning Scheme:

Cloning sites used for ORF Shuttling:



* The last codon before the Stop codon of the ORF

ACCN: NM_000971

ORF Size: 744 bp

OTI Disclaimer: The molecular sequence of this clone aligns with the gene accession number as a point of reference only. However, individual transcript sequences of the same gene can differ through naturally occurring variations (e.g. polymorphisms), each with its own valid existence. This clone is substantially in agreement with the reference, but a complete review of all prevailing variants is recommended prior to use. [More info](#)

OTI Annotation: This clone was engineered to express the complete ORF with an expression tag. Expression varies depending on the nature of the gene.

Components: The ORF clone is ion-exchange column purified and shipped in a 2D barcoded Matrix tube containing 10ug of transfection-ready, dried plasmid DNA (reconstitute with 100 ul of water).

Reconstitution Method:

1. Centrifuge at 5,000xg for 5min.
2. Carefully open the tube and add 100ul of sterile water to dissolve the DNA.
3. Close the tube and incubate for 10 minutes at room temperature.
4. Briefly vortex the tube and then do a quick spin (less than 5000xg) to concentrate the liquid at the bottom.
5. Store the suspended plasmid at -20°C. The DNA is stable for at least one year from date of shipping when stored at -20°C.

RefSeq: [NM_000971.4](#)

RefSeq Size: 866 bp

RefSeq ORF: 747 bp

Locus ID: 6129

UniProt ID: [P18124](#)

Cytogenetics: 8q21.11

Domains: Ribosomal_L30

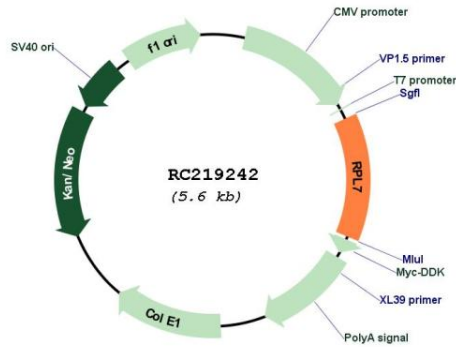
Protein Families: Transcription Factors

Protein Pathways: Ribosome

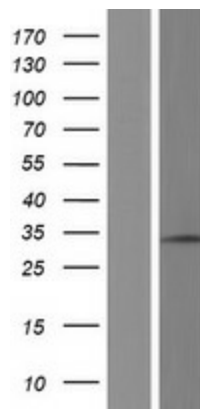
MW: 29 kDa

Gene Summary: Ribosomes, the organelles that catalyze protein synthesis, consist of a small 40S subunit and a large 60S subunit. Together these subunits are composed of 4 RNA species and approximately 80 structurally distinct proteins. This gene encodes a ribosomal protein that is a component of the 60S subunit. The protein belongs to the L30P family of ribosomal proteins. It contains an N-terminal basic region-leucine zipper (BZIP)-like domain and the RNP consensus submotif RNP2. In vitro the BZIP-like domain mediates homodimerization and stable binding to DNA and RNA, with a preference for 28S rRNA and mRNA. The protein can inhibit cell-free translation of mRNAs, suggesting that it plays a regulatory role in the translation apparatus. It is located in the cytoplasm. The protein has been shown to be an autoantigen in patients with systemic autoimmune diseases, such as systemic lupus erythematosus. As is typical for genes encoding ribosomal proteins, there are multiple processed pseudogenes of this gene dispersed through the genome. [provided by RefSeq, Jul 2008]

Product images:



Circular map for RC219242



Western blot validation of overexpression lysate (Cat# [LY424418]) using anti-DDK antibody (Cat# [TA50011-100]). Left: Cell lysates from untransfected HEK293T cells; Right: Cell lysates from HEK293T cells transfected with RC219242 using transfection reagent MegaTran 2.0 (Cat# [TT210002]).