

## Product datasheet for **RC219236**

### **MAG1 (GPAT3) (NM\_032717) Human Tagged ORF Clone**

#### **Product data:**

Product Type:	Expression Plasmids
Product Name:	MAG1 (GPAT3) (NM_032717) Human Tagged ORF Clone
Tag:	Myc-DDK
Symbol:	MAG1
Synonyms:	AGPAT8; AGPAT9; AGPAT 10; AGPAT10; HMFN0839; LPAAT-theta; MAG1
Mammalian Cell Selection:	Neomycin
Vector:	pCMV6-Entry (PS100001)
E. coli Selection:	Kanamycin (25 ug/mL)



[View online »](#)

**ORF Nucleotide Sequence:**

>RC219236 representing NM\_032717  
 Red=Cloning site Blue=ORF Green=Tags(s)

TTTTGTAATACGACTCACTATAGGGCGGCCGGAATTCGTCGACTGGATCCGGTACCGAGGAGATCTGCC  
 GCC**CGGATCGCC**

ATGGAGGGCGCAGAGCTGGCCGGAAGATCCTTCCACCTGGCTGACGCTGGTTCTCGGCTTCATCCTTT  
 TACCTTCGGTCTTCGGAGTGTCTCTGGGCATCTCCGAGATCTACATGAAGATCCTAGTGAAGAACTTTAGA  
 GTGGGCCACAATACGAATTGAAAAAGGAACCCAAAGGAGTTCGATTCTTAAAACTCTGCTTCTGTTGGT  
 ATTATCCAAAGAGATGAGTACCCATGGAAAAAGGGCTCTCTGGTCTACGAGGAAGGGACTTTGAGCTGT  
 CTGACGTGTTTTATTTCTCAAGAAGGGATTGGAAGCCATTGTAGAAGATGAAGTGACCCAGAGGTTTTTC  
 CTCAGAGGAGCTAGTGCATGGAATCTCCTCACAAGAACCAATGTAAATTTCCAGTACATCAGTCTGCGG  
 CTCACTATGGTGTGGGTCTGGGCGTCATAGTGCCTATTGTGCTCTACTGCCTCTGAGGGTTACCTTGG  
 CTTTCATTGGGATCAGTTTGTGGTTATAGGAACACTGCTGGTGGCAGCTGCCAGACAGCAGCCTCAA  
 AAAGTGGCTGAGTGAAGTGGTCCATCTGACTTGTGCCGGATCTGTGTGCGAGCCCTCTCTGGTACCATT  
 CATTATCATAACAAGCAGTACAGACCCAGAAGGGAGGCATTTGTGTTGCCAACCACTACTCCCCATTG  
 ATGTTTTAATCTTGACAACGGATGGATGTTATGCTATGTTGGCCAGGTTTCATGGCGCTTGATGGGAAT  
 TATTGAGAGACTATGGTCAAGGCTTGCTCATGTCTGGTTGAACGCTCAGAAATGAAGGATCGACAC  
 CTGGTTACTAAGAGACTAAAAGAACATATTGCTGATAAGAAGAACTACCCATACTAATTTTTCTGGAAG  
 GAAGTTCATCAACAATACTTCAGTTCATGATGTTAAAAAGGGGAGCTTTGAAATGGAGGAACCATACA  
 TCCAGTTGCAATTAAGTATAACCCTCAGTTCGGTATGCATTTTGAACAGTAGTAAATACAACATGGTG  
 AGCTACCTGCTTCAATGATGACCAGCTGGGCCATCGTCTGTGACGTGTGGTACATGCCCCCATGACCA  
 GAGAGGAAGGAGAAGATGCAGTCCAGTTTGTAAACAGGGTTAAGTCTGCTATTGCTATACAAGGAGCCT  
 GACTGAACCTCCCTGGGATGGAGGACTAAAGAGAGCAAAGGTGAAGGACATCTTTAAGGAAGAGCAGCAG  
 AAAAATTACAGCAAGATGATTGTGGCAATGGATCTCTCAGC

**ACGCGT**ACGCGGCCGCTCGAGCAGAACTCATCTCAGAAGAGGATCTGGCAGCAAATGATATCCTGGATT  
 ACAAGGATGACGACGATAAGGTTTAA

**Protein Sequence:**

>RC219236 representing NM\_032717  
 Red=Cloning site Green=Tags(s)

MEGAELAGKILSTWLTLLVLFILLPSVFGVSLGISEIYMKILVKTLEWATIRIEKGPKEKILKNSASVG  
 IIQRDESPMEKGLSGLRGRDFELSDVFYFSKKGLEAIVEDEVTRFSSEELVSWNLLTRTNVNFQYISLR  
 LTMVWVLGVIVRYCVLLPLRVTLAFIGISLLVIGTTLVGQLPDSLKNWSELVHLTCCRICVRLSGTI  
 HYHNKQYRPQKGGICVANHTSPIDVLILTTDGCYAMVGQVHGGLMGI IQRAMVKACPHVWFERSEM KDRH  
 LVTKRLKEHIADKKKLPILIFPEGTCINNTSVMMFKKGSFEIGGTIHPVAIKYNPQFGDAFWNSSKYNMV  
 SYLLRMMTSWAI VCDVWYMPMTREEGEDAVQFANRVKSAIAIQGGLTELPWDGGLKRAKVKDIFKEEQQ  
 KNYSKMIVGNLSLS

**TR**TRPLEQKLISEEDLAANDILDYKDDDDKV

**Chromatograms:**

[https://cdn.origene.com/chromatograms/mk6200\\_f07.zip](https://cdn.origene.com/chromatograms/mk6200_f07.zip)

**Restriction Sites:**

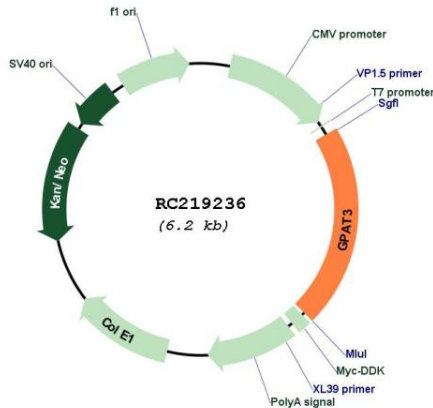
SgfI-MluI



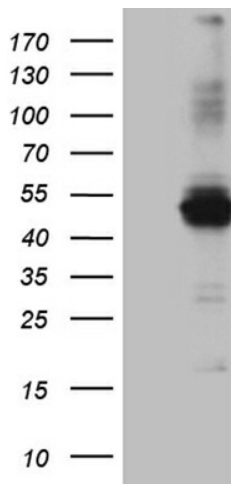
**Domains:** Acyltransferase  
**Protein Families:** Transmembrane  
**MW:** 48.5 kDa

**Gene Summary:** This gene encodes a member of the lysophosphatidic acid acyltransferase protein family. The encoded protein is an enzyme which catalyzes the conversion of glycerol-3-phosphate to lysophosphatidic acid in the synthesis of triacylglycerol. Multiple alternatively spliced variants, encoding the same protein, have been identified. [provided by RefSeq, Jan 2012]

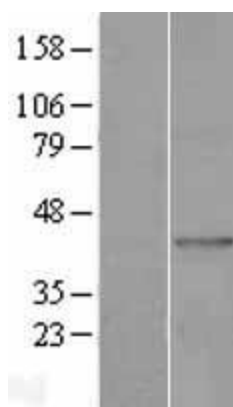
**Product images:**



Circular map for RC219236



HEK293T cells were transfected with the pCMV6-ENTRY control (Cat# [PS100001], Left lane) or pCMV6-ENTRY AGPAT9 (Cat# RC219236, Right lane) cDNA for 48 hrs and lysed. Equivalent amounts of cell lysates (5 ug per lane) were separated by SDS-PAGE and immunoblotted with anti-AGPAT9 (Cat# [TA809765])(1:500). Positive lysates [LY403194] (100ug) and [LC403194] (20ug) can be purchased separately from OriGene.



Western blot validation of overexpression lysate (Cat# [LY403194]) using anti-DDK antibody (Cat# [TA50011-100]). Left: Cell lysates from untransfected HEK293T cells; Right: Cell lysates from HEK293T cells transfected with RC219236 using transfection reagent MegaTran 2.0 (Cat# [TT210002]).