

## Product datasheet for RC219233

### DENN (MADD) (NM\_130473) Human Tagged ORF Clone

#### Product data:

Product Type:	Expression Plasmids
Product Name:	DENN (MADD) (NM_130473) Human Tagged ORF Clone
Tag:	Myc-DDK
Symbol:	MADD
Synonyms:	DEEAH; DENN; IG20; NEDDISH; RAB3GEP; RabGEF
Vector:	pCMV6-Entry (PS100001)
E. coli Selection:	Kanamycin (25 ug/mL)
Cell Selection:	Neomycin
ORF Nucleotide Sequence:	>RC219233 representing NM_130473 Red=Cloning site Blue=ORF Green=Tags(s)

TTTTGTAATACGACTCACTATAGGGCGGCCGGGAATTCGTCGACTGGATCCGGTACCGAGGAGATCTGCC  
GCC**GCGATCGC**C

ATGGTGCAAAAGAAGAAGTTCTGTCCTCGTTACTTGACTATCTAGTGATCGTAGGGCCAGGCACCCGA  
GCAGTGATAGCGTGGCCAGACTCCTGAATTGCTACGGCGATACCCCTTGGAGGATCACACTGAGTTTCC  
CCTGCCCCAGATGTAGTGTCTTCTGCCAGCCGAGGGCTGCCTGAGCGTGCGGCAGCGCCGATGAGC  
CTTCGGGATGATACCTCTTTGTCTTACCCCTCACTGACAAGGACTGGAGTCACGCGATATGGCATCT  
GTGTTAACTTCTACCGCTCCTTCCAAAAGCGAATCTCTAAGGAGAAGGGGAAGGTGGGGCAGGGTCCCG  
TGGGAAGGAAGGAACCCATGCCACCTGTGCCTCAGAAGAGGGTGGCACTGAGAGCTCAGAGAGTGGCTCA  
TCCCTGCAGCCTCTCAGTGCTGACTCTACCCCTGATGTGAACCACTCCTCGGGGCAAACGCCGGGCA  
AGGCGGGGAGCCGCTCCCGCAACAGTACTCTCACGTCCCTGTGCGTGCTCAGCCACTACCCTTTCTTCTC  
CACCTCCGAGAGTGTGTATACTCTCAAGCGCTGGTGGACTGCTGTAGTGAGCGCCTTCTGGCAAG  
AACTGGGCATCCCTCGAGGCGTACAAAGGACACCATGTGGCGGATCTTACTGGATCGCTGCTGGTAG  
AGGAGAAGTCAAGTGCCCTTCTGCATGACCTTCGAGAGATTGAGGCCTGGATCTATCGATTGCTCGCCTC  
CCCAGTACCCGCTCTGCGGAGAGCGAGTAGACATCGAGGTCCTACCCCAAGAGCTCCAGCCAGCTCTG  
ACCTTTGCTCTTCCAGACCCATCTCGATTACCCCTAGTGGATTTCCCACTGCACCTTCCCTTGGAACTTC  
TAGGTGTGGACGCTGTCTCCAGGTGCTAACCTGCATTCTGTTAGAGCACAAGGTGGTGTACAGTCCC  
AGACTACAATGCACTCTCCATGTCTGTGATGGCATTCTGGCAATGATCTACCCACTGGAGTATATGTTT  
CCTGTCATCCCCTGCTACCCACTGCATGGCATCAGCAGAGCAGCTGCTGTTGGCTCCAACCCCGTACA  
TCATTGGGTTCTCGCCAGCTTCTTCTCTACAACTGGACTTCAAAATGCTGATGATGTATGGCTAGT  
GGATCTGGACAGCAATAGGGTATTGCCCCACCAATGCAGAAGTGTGCCTATCCTGCCAGAACCAGAA  
TCACTAGAGCTGAAAAGCATTTAAAGCAGGCCTTGGCCAGCATGAGTCTCAACACCCAGCCCATCTCA  
ATCTGGAGAAATTCATGAGGGCCAGGAGATCCCCCTTCTTGGGAAGGCCTTCAATGACCTGCAGTC  
CACACCGTCCACTGAATTCACCCACTCATCTATGGCAATGATGTGGATTCTGTGGATGTTGCAACCAGG  
GTTGCCATGGTACGGTCTTCAATTCGCCAACGTGCTGCAGGGATTTAGATGCACACGCGTACCTGCG



[View online »](#)

GCCTCTTCTCGGCCTGTGGTAGCTTTTCAAGCTGGCTCCTTCTAGCCTCACGTCCCCGGCAGACTCC  
TTTTGCCGAGAAATTGGCCAGGACTCAGGCTGTGGAGTACTTTGGGGAATGGATCCTTAACCCCAAC  
TATGCCTTTCAGCGAATTCACAACAATATGTTTGATCCAGCCCTGATTGGTGACAAGCCAAAGTGGTATG  
CTCATCAGCTGCAGCCTATCCACTATCGCGTCTATGACAGCAATCCCAGCTGGCTGAGGCCCTGAGTGT  
ACCACCAGAGCGGGACTCTGACTCCGAACCTACTGATGATAGTGGCAGTGATAGTATGGATTATGACGAT  
TCAAGCTCTTCTTACTCCTCCCTTGGTGACTTTGTGAGTAAATGATGAAATGTGACATTAATGGTGATA  
TCCCAATGTGGACCTCTGACACATGCAGCACTGGGGGATGCCAGCAGGTGGAGTTGACGAGCTGCA  
GAATCAGAAGGAAGCAGAAGAGCCTGGCCAGACAGTGAGAACTCTCAGGAAAACCCCCACTGCGCTCC  
AGCTCTAGCACCCAGCCAGCAGCAGCCCCAGCACTGTATCCACGGAGCCAACCTCTGAACCTGTGACT  
CTACGGAGATGGATGATAAGGCAGCAGTAGGCGTCTCCAAGCCCTCCCTTCCGTGCCTCCCAGCATTGG  
CAAATCGAACGTGGACAGACGTGAGGCAGAAATGGAGAGGGGTGAGTGCAGCGGCGCAATCTATGACAA  
CCATACTTCGAGCCCAATATGGCTTTCCCTGAGGAAGATGAGGATGAGCAGGGGAAAGTTACTC  
CCCGATTGAGCCCAATGTCAGTGGCAATCGGGCTCAAAGCTGCTGCGGCCAACAGCTTGAGACTGGC  
AAGTACTCAGATGCAGAGTCACTCTCGGGCAAGCTCTCCAACCTCCACCGTCTCCAACACCAGCACC  
GAGGGCTTCGGGGGCATCATGTCTTTTCCAGCAGCCTCTATCGGAACCACAGTACCAGCTTCAGTCTTT  
CAAACCTCACACTGCCCAACAAAGGTGCCGAGAGAAGGCCACGCTTCCCCAGTCTGAAAGTATTTGG  
GCTAAATACTCTAATGGAGATTGTTACTGAAGCCGGCCCCGGGAGTGGTGAAGGAAACAGGAGGGCGTTA  
GTGGATCAGAAGTCATCTGTCTTAAACACAGCCCAACAGTGAAGGAGAACTCCATCACCCCAAGGGT  
GATCCAGCAATCTAGTGAGAACCAGCAGTTCCTGAAGGAGGTGGTGCACAGCGTGTGGACGGCCAGGG  
AGTTGGCTGGCTCAACATGAAAAGGTGCGCCGGCTGCTGGAGAGCGAGCAGTGCAGTCTTTGTCTG  
AGCAAGCTGAACCGCATGGTGCAGTCAAGGACGATGCCCGCAGGACATCATCCCGATGTGGAGATCA  
GTCGGAAGGTGTACAAGGAATGTTAGACCTCCTCAAGTGTACAGTCTCAGCTTGAGCAGTCCATGTC  
CCACGCGGGTCTGGGTGGCATGGCCAGCATCTTTGGGCTTTTGGAGATTGCCAGACCCACTACTATAGT  
AAAGAACCAGACAAGCGGAAGAAAGTCCAACAGAAAGTGTAAATACCCAGTTGGCAAGGATCCTGGCC  
TAGCTGGGCGGGGGACCCAAAGGCTATGGCACAACTGAGAGTTCACAACTGGGACCTCGGGCACCAAG  
TGCCACAGGAAAGGGTCTAAGGAACTGGACACCAAGTTTAAAGGAGAAAATTTTATAGCATCTATT  
GGGCTGAAGTAACTCAACCTGTCTTTGACCTTGGTGAGACAGAGGAGAAAAAGTCCCAGATCAGCGCAG  
ACAGTGGTGTGAGCCTGACGTCTAGTTCAGAGGACTGATCAAGACTCTGTATCGGCTGAGTCCAGC  
TGTTATGATCCGAGCTCAAGTCAGGATCTGAAGTTAGCACCGTGGTGAATAGCTCTGGAGAGACC  
CTTGAGCTGACAGTACTTGCAGCAATGCAGGTGATGGACCAGTGGCGAGGGCAGTGTTCACCTGG  
CAAGCTCTCGGGCATTGTCTGATAGTGAATTTGAGACCACTCTGCCACAAGCACCATCTTTGGTAA  
AGCCCACAGCTTGAAGCCAAGCATAAAGGAGAAGCTGGCAGGCAGCCCACTTCTGACTTCTGAAGATGTG  
AGCCAGCGAGTCTATCTATGAGGGACTCCTAGGCAAAGAGCGTCTACTTTATGGGACCAATGCAAT  
TCTGGGAAGATGCCTTCTTAGATGCTGTGATGTTGGAGAGAGAAGGGATGGGTATGGACCAGGGTCCCCA  
GGAAATGATCGACAGGTACCTGTCCCTTGAGAAACATGACCGGAAGCGCTGGAAGATGATGAAGATCGC  
TTGCTGGCCACTTCTGCACAACCTCATCTCCTACATGCTGTGATGAAGGTAATAAGAATGACATCC  
GCAAGAAGGTGAGGCGCTAATGGGAAAGTCCGACATTTGGGCTTGTGTACAGCCAGCAATCAATGAGGT  
GCTTGTACAGCTGGCGAACCTGAATGGACCGATCTCTATCTGGTCCAGTGGCAGCCGGCACATGAAG  
AAGCAGACATTTGTGGTACATGCAGGGACAGATACAAACGGAGATATCTTTTTCATGGAGGTGTGCGATG  
ACTGTGTGGTGTGCGTAGTAACATCGGAACAGTGTATGAGCGTGGTGGTACGAGAAGCTCATCAACAT  
GACCTACTGTCCCAAGACGAAGGTGTTGTGCTTGTGGCGTAGAAATGGCTCTGAGACCCAGCTCAACAAG  
TTCTATACTAAAAAGTGTGCGGAGCTGTACTACTGTGTGAAGGACAGCATGGAGCGCGCTGCCGCCGAC  
AGCAAAGCATCAAACCCGACCTGAATGGGTGGCGAGTTCCTGTGCAGGACCTGAAGACTGGTGAAGG  
TGGCCTGCTGCAGGTGACCTGGAAGGGATCAACCTCAAATTCATGCACAATCAGGTTTTCATAGAGCTG  
AATCACATTAAGGATGCAATACAGTTCGAGGCGTCTTTGTCTGGAGGAATTTGTTCTGAAATTAAG  
AAGTGGTGAAGCACAAGTACAAGACCAATGGCCACGAAATCTGCTACTCCGTATTATGTCTCTTCTC  
GTACGTGGCTGCAGTTCATAGCAGTGAAGGATCTCAGAACCCCGCCCGGCTGTCTTAGC

AGCGGACCGACGCGTACGCGGCCGCTCGAGCAGAACTCATCTCAGAAGAGGATCTGGCAGCAAATGATATCC  
TGGATTACAAGGATGACGACGATAAGGTTTAA

**Protein Sequence:** >RC219233 representing NM\_130473  
 Red=Cloning site Green=Tags(s)

MVQKKKFCPRLLDYLVIIVGARHPSSDSVAQTEPELLRRYPLEDHTEFPLPPDVVFFCQPEGCLSVRQRMS  
 LRDDTSFVFTLTDKDTGVTRYGICVNFYRSFQKRISKEKGEAGSRGKEGTHATCASEEGGTESSESGS  
 SLQPLSADSTPDVNQSPRGKRRAKAGSRSRNSTLTSCLVLSHYPPFFSTFRECLYTLKRLVDCSERLLGK  
 KLGIPRGVQRDTMWIRIFTGSLLEEKSSALLHDLREIEAWIYRLLRSPVPVSGQKRVDIQELQPAL  
 TFALPDPSPRFTLVDFPLHLPLELLGVDAQLVLTCLLEHKVVLQSRDYNALSMSVMAFVAMIYPLEYMF  
 PVIPLLPCTMASAEQLLLAPTPYIIGVPASFLLYKLDKMPDDVWLVDLDSNRVIAPTNAEVLPIPEPE  
 SLELKKHLKQALASMSLNTQPIILNLEKFHEGQEIPLLLGRPSNDLQSTPSTEFNPLIYGNVDVSDVATR  
 VAMVRFNSANVLQGFQMHTRTLRLFPRPVVAFQAGSFLASRPRQTPFAEKLARTQAVEYFGWILNPTN  
 YAFQRIHNNMFDPALIGDKPKWYAHQLQPIHYRVYDSNSQLAEALSVPPERDSDSEPTDDSGSDSMYDD  
 SSSYSYSLGDFVSEMMKCDINGDTPNVDP LTHAALGDASEVEIDELQNQKEAEEPGPDSSENSQENPLRS  
 SSSTTASSPSTVIHGANSEPADSTEMDDKAAVGVSKPLPSVPPSIGKSNVDRRQAEIGEGSVRRRIYDN  
 PYFEPQYGFPEEDEDQGESYTPRFSQHVSGNRAQKLLRPNSLRASDSDAESDRASSPNSTVNTST  
 EFGGGIMSFASSLYRNHSTSFSLSNLTLPTKGAREKATPFPSLKVFLNLTMEIVTEAGPGSGEGNRRAL  
 VDQKSSVIKHSPTVKREPPSPQGRSSNSSENQQLKEVVHSLVDGQGVGWLNMKKVRRLLLESEQLRVFVL  
 SKLNRMVQSEDDARQDIIPDVEISRKYKGM LDKCTVLSLEQSYAHAGLGGMASIFGLLEIAQTHYYS  
 KEPDKRKRSPTESVNTVPVKDPLAGRGDPKAMAQLRVPQLGPRAPSATGKGPKELDTRSLKEENFIASI  
 GPEVIKPVFDLGETEEKKSQISADSGVSLTSSSQRTDQDSVIGVSPAVMIRSSSQDSEVSTVVSNSSET  
 LGADSDLSSNAGDGGGEGSVHLASSRGTLSDEIETNSATSTIFGKAHSLKPSIKEKLAGSPIRTSEDV  
 SQRVYLYEGLLKERSTLWDQMWFEDAF L DAVMLEREGMGMDQGPQEMIDRYLSLGEHRKRLDEDEDRL  
 LLATLLHNLISYMLLMKVNKNDIRKKVRRLLMGKSHIGLVYSQQINEVLDQLANLNGRDL SIWSSGRHMK  
 KQTFVVHAGTDNGDIFFMVDCDDCVLRSNIGTVYERWYKLIINMTCYCPKTKVLC LWRNGSETQLNK  
 FYTKKRELYYCVKDSMERAAARQSQSIKGPPELGGFFVQDLKTGEGGLLQVTLEGINLKFHMNQVFIEL  
 NHIKKCNTVRGVFVLEEFVPEIKEVVS HKYKTPMAHEICYSVLC LFSYVAAVHSSEEDLRTPPRPVSS

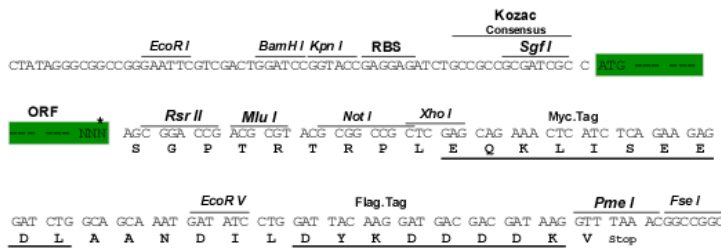
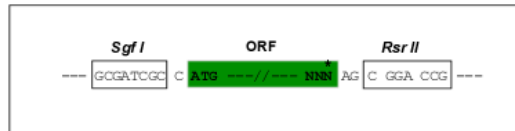
SGPTRRRL**EQKLISEEDLAANDILDYKDDDDK**V

**Restriction Sites:**

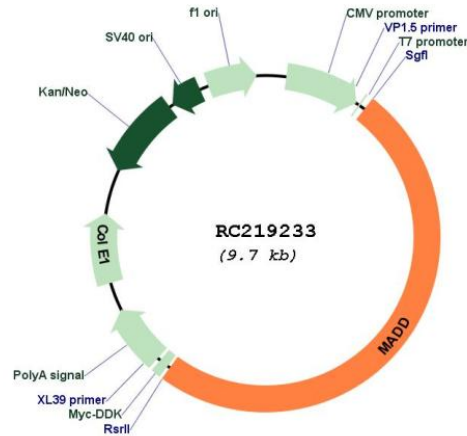
SgfI-RsrII

**Cloning Scheme:**

Cloning sites used for ORF Shuttling:



\* The last codon before the Stop codon of the ORF

**Plasmid Map:**


**ACCN:** NM\_130473

**ORF Size:** 4824 bp

**OTI Disclaimer:** The molecular sequence of this clone aligns with the gene accession number as a point of reference only. However, individual transcript sequences of the same gene can differ through naturally occurring variations (e.g. polymorphisms), each with its own valid existence. This clone is substantially in agreement with the reference, but a complete review of all prevailing variants is recommended prior to use. [More info](#)

**OTI Annotation:** This clone was engineered to express the complete ORF with an expression tag. Expression varies depending on the nature of the gene.

**Components:** The ORF clone is ion-exchange column purified and shipped in a 2D barcoded Matrix tube containing 10ug of transfection-ready, dried plasmid DNA (reconstitute with 100 ul of water).

**Reconstitution Method:**

1. Centrifuge at 5,000xg for 5min.
2. Carefully open the tube and add 100ul of sterile water to dissolve the DNA.
3. Close the tube and incubate for 10 minutes at room temperature.
4. Briefly vortex the tube and then do a quick spin (less than 5000xg) to concentrate the liquid at the bottom.
5. Store the suspended plasmid at -20°C. The DNA is stable for at least one year from date of shipping when stored at -20°C.

**RefSeq:** [NM\\_130473.2](#), [NP\\_569829.2](#)

RefSeq Size: 5914 bp

RefSeq ORF: 4827 bp

Locus ID: 8567

UniProt ID: [Q8WXG6](#)

Cytogenetics: 11p11.2

Protein Families: Druggable Genome

MW: 178.6 kDa

**Gene Summary:** Tumor necrosis factor alpha (TNF-alpha) is a signaling molecule that interacts with one of two receptors on cells targeted for apoptosis. The apoptotic signal is transduced inside these cells by cytoplasmic adaptor proteins. The protein encoded by this gene is a death domain-containing adaptor protein that interacts with the death domain of TNF-alpha receptor 1 to activate mitogen-activated protein kinase (MAPK) and propagate the apoptotic signal. It is membrane-bound and expressed at a higher level in neoplastic cells than in normal cells. Several transcript variants encoding different isoforms have been described for this gene. [provided by RefSeq, Jul 2008]