

## Product datasheet for **RC219230**

### **STAM1 (STAM) (NM\_003473) Human Tagged ORF Clone**

#### **Product data:**

Product Type:	Expression Plasmids
Product Name:	STAM1 (STAM) (NM_003473) Human Tagged ORF Clone
Tag:	Myc-DDK
Symbol:	STAM1
Synonyms:	STAM-1; STAM1
Mammalian Cell Selection:	Neomycin
Vector:	pCMV6-Entry (PS100001)
E. coli Selection:	Kanamycin (25 ug/mL)



[View online »](#)

**ORF Nucleotide Sequence:**

>RC219230 representing NM\_003473  
 Red=Cloning site Blue=ORF Green=Tags(s)

TTTTGTAATACGACTCACTATAGGGCGGCCGGAATTCGTCGACTGGATCCGGTACCGAGGAGATCTGCC  
 GCC**GCGATCGCC**

ATGCCTCTTTTTGCCACCAATCCCTTCGATCAGGATGTTGAGAAAGCAACCAGCGAGATGAATACTGCTG  
 AGGACTGGGGCCTCATTTTGGATATCTGTGATAAAGTTGGTCAGTCTCGACTGGACCTAAGGATTGCTC  
 TCGGTCTATTATGAGAAGAGTGAACCACAAGATCCTCACGTTGCTATGCAGGCTTTGACTCTTCTAGGA  
 GCATGTGTATCAAAGTGGCAAATTTTTCAATTTAGAAGTATGTTCAAGAGATTTGCTAGTGAAGTAA  
 GCAACGTATTAATAAGGGTCATCTAAAGTATGTGAAAAATTAAGGCTCTTATGGTTGAATGGACAGA  
 TGAATTTAAGAATGATCCACAGCTTAGTCTAATATCAGCAATGATTAAGAACCTTAAGGAACAAGGAGTT  
 ACGTTCACAGCTATTGGCTCTCAGGCTGCAGAACAAAGCAAGCCAGCTCTGTAGCCAAGGATC  
 CTGGTACTGTGGTAACAAAAAAGAAGAAGATTTAGCAAAAGCCATTGAGTTGTCTCTCAAGGAACA  
 AAGGCAGCAGTCAACCACCTTTCCACTTGTATCCAAGCACATCCAGTCTCTTAACTAACCACCAACAT  
 GAAGGCCGAAAAGTTTCGTCTATATATGACTTTGAAGCTGCTGAAGACAATGAACCTACTTTTAAAGCTG  
 GAGAAATTATTACAGTCTTGTATGACAGTGATCCTAACTGGTGGAAAGGTGAAACCCATCAAGGCATAGG  
 GTTATTTCTTCTAATTTTGTGACTGCAGATCTCACTGCTGAACCAGAAATGATTAACAGAGAAGAAG  
 ACGGTACAATTTAGTGATGATGTTCCAGGTAGAGACAATAGAACCAGAGCCGGAACCCAGCCTTTATTGATG  
 AAGATAAAATGGACCAGTTGCTACAGATGCTGCAAAGTACAGACCCAGTGATGATCAGCCAGACCTACC  
 AGAGCTGCTTTCATCTTGAAGCAATGTGTACCAGATGGGACCTCTCATTGATGAAAAGCTGGAAGATATT  
 GATAGAAAACATTCAGAACTCTCAGAATTAATGTGAAAGTATGAAAGTACAGAATCAGCCATATTATGCAGTATC  
 TAATGAAACGAAGATCCGATGTATCCATGTATGCAAAGTTACAGAATCAGCCATATTATGCAGTATC  
 TGGTGTCTGGTTCTCAGGTGTATGCAGGGCCTCCTCCAAGTGGTGCCTACCTGGTTGCAGGGAACGCG  
 CAGATGAGCCACCTCCAGAGCTACAGTCTTCCCCCGGAGCAGCTGTCTTCTCTCAGCCAGCAGTGGTCC  
 CACCATCCGAAACCCAGCCCTTCTAGTCAGCAGACTCAGGCCGCTTACCCAAATACAATGGTCAGTTC  
 CGTTCAAGGAAACACATATCCCAGCCAGGCGCCAGTATATAGTCTCCTCCTGCCGCTACTGCTGCTGCT  
 GCAACTGCCGATGCTACTCTGTACCAGAATGCAGGACCTAATATGCCCCAGGTGCCAAACTATAACTTAA  
 CATCATCAACTCTGCCTCAGCCCGAGGCGCAACAGCCACCTCAGCCACAGCAACCATATTCTCAGAA  
 GGCTCTGCTA

**ACGCGT**ACGCGGCCGCTCGAGCAGAAACTCATCTCAGAAGAGGATCTGGCAGCAAATGATATCCTGGATT  
 ACAAGGATGACGACGATAAGGTTTAA

**Protein Sequence:**

>RC219230 representing NM\_003473  
 Red=Cloning site Green=Tags(s)

MPLFATNPFDQDVEKATSEMNTAEDWGLILDICDKVQSRTGPKDCLRSIMRRVNHKDPHVAMQALTLIG  
 ACVSNCGKIFHLEVCSRDFASEVSNVLNKGHPKVCCEKLMVWEWTFKNDPQLSLISAMIKNLKEQGV  
 TFPAIGSQAAEQAKASPALVAKDPGTVANKKEEEDLAKAIELSLKEQRQSTTLSTLYPSTSSLLTNHQH  
 EGRKVRAIYDFEAAEDNELTFKAGEIITVLDSDPNWKGETHQGIGLFSPNFVADLTAPEMIKTEKK  
 TVQFSDDVQVETIEPEPEPAFIDEDKMDQLQLQSTDPDSDQPDPELLHLEAMCHQMGPLIDEKLEDI  
 DRKHSELSELNVKVMESLSLYTKLMNEDPMYSMYAKLQNPYYMQSSVSGSVQVYAGPPPSGAYLVAGNA  
 QMSHLQSYSLPPEQLSSLQAVVPPSANPALPSQQTQAAYPNTMVSSVQNTYPSQAPVYSPPPAATAAA  
 ATADVTLQYQAGPNMPQVPNYNLTSSTLPQPGGSQPPQPPQPPYSQKALL

**TR**TRPLEQKLISEEDLAANDILDYKDDDDKV

**Chromatograms:**

[https://cdn.origene.com/chromatograms/mk6611\\_e08.zip](https://cdn.origene.com/chromatograms/mk6611_e08.zip)

**Restriction Sites:**

Sgfl-MluI

**Cloning Scheme:**


**ACCN:** NM\_003473

**ORF Size:** 1620 bp

**OTI Disclaimer:** The molecular sequence of this clone aligns with the gene accession number as a point of reference only. However, individual transcript sequences of the same gene can differ through naturally occurring variations (e.g. polymorphisms), each with its own valid existence. This clone is substantially in agreement with the reference, but a complete review of all prevailing variants is recommended prior to use. [More info](#)

**OTI Annotation:** This clone was engineered to express the complete ORF with an expression tag. Expression varies depending on the nature of the gene.

**Components:** The ORF clone is ion-exchange column purified and shipped in a 2D barcoded Matrix tube containing 10ug of transfection-ready, dried plasmid DNA (reconstitute with 100 ul of water).

**Reconstitution Method:**

1. Centrifuge at 5,000xg for 5min.
2. Carefully open the tube and add 100ul of sterile water to dissolve the DNA.
3. Close the tube and incubate for 10 minutes at room temperature.
4. Briefly vortex the tube and then do a quick spin (less than 5000xg) to concentrate the liquid at the bottom.
5. Store the suspended plasmid at -20°C. The DNA is stable for at least one year from date of shipping when stored at -20°C.

**Note:** Plasmids are not sterile. For experiments where strict sterility is required, filtration with 0.22um filter is required.

**RefSeq:** [NM\\_003473.4](#)

**RefSeq Size:** 2967 bp

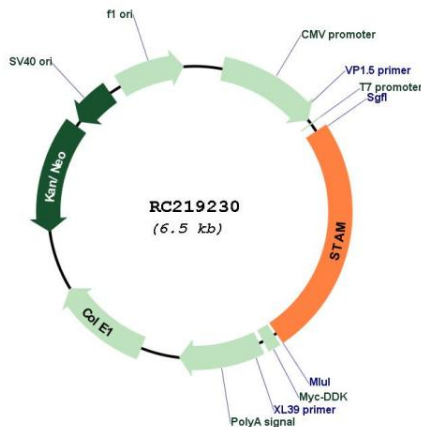
**RefSeq ORF:** 1623 bp

**Locus ID:** 8027

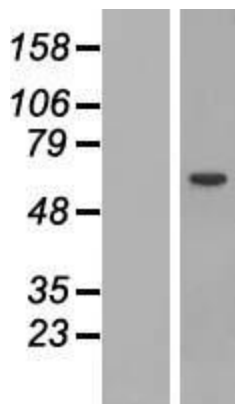
**UniProt ID:** [Q92783](#)  
**Cytogenetics:** 10p12.33  
**Domains:** SH3, VHS, UIM  
**Protein Pathways:** Endocytosis, Jak-STAT signaling pathway  
**MW:** 59 kDa

**Gene Summary:** This gene encodes a member of the signal-transducing adaptor molecule family. These proteins mediate downstream signaling of cytokine receptors and also play a role in ER to Golgi trafficking by interacting with the coat protein II complex. The encoded protein also associates with hepatocyte growth factor-regulated substrate to form the endosomal sorting complex required for transport-0 (ESCRT-0), which sorts ubiquitinated membrane proteins to the ESCRT-1 complex for lysosomal degradation. Alternatively spliced transcript variants have been observed for this gene. [provided by RefSeq, Feb 2011]

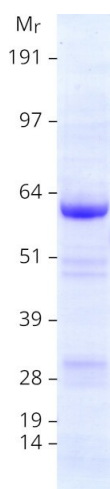
### Product images:



Circular map for RC219230



Western blot validation of overexpression lysate (Cat# [LY418657]) using anti-DDK antibody (Cat# [TA50011-100]). Left: Cell lysates from untransfected HEK293T cells; Right: Cell lysates from HEK293T cells transfected with RC219230 using transfection reagent MegaTran 2.0 (Cat# [TT210002]).



Coomassie blue staining of purified STAM protein (Cat# [TP319230]). The protein was produced from HEK293T cells transfected with STAM cDNA clone (Cat# RC219230) using MegaTran 2.0 (Cat# [TT210002]).