

Product datasheet for RC219226

ASPHD1 (NM_181718) Human Tagged ORF Clone

Product data:

Product Type:	Expression Plasmids
Product Name:	ASPHD1 (NM_181718) Human Tagged ORF Clone
Tag:	Myc-DDK
Symbol:	ASPHD1
Mammalian Cell Selection:	Neomycin
Vector:	pCMV6-Entry (PS100001)
E. coli Selection:	Kanamycin (25 ug/mL)
ORF Nucleotide Sequence:	>RC219226 ORF sequence Red=Cloning site Blue=ORF Green=Tags(s)

TTTTGTAATACGACTCACTATAGGGCGGCCGGAATTCGTCGACTGGATCCGGTACCGAGGAGATCTGCC
GCC**CGATCGCC**

ATGAAGGAGGGGAGAGGGAGCTTCAGCGTGGAGAGAGGACCGCGGAAGGAGAGAGACAGCCCAGAGTG
GAATGTGGAAGGGAAACAGTCCAGCGGGGAGCCAGGGGGCAGCCATGGAAGGGACAGGTGGGGAGCTGGG
GGGACAGGGGAACTGGGGTCCGGAGGACGCCCCAGGCCCTTTGGCCAGGGCCTCCCTGATCATGCTCCCG
TGGCCACTACCCCTGGCCTCCTCGGCCCTCACCTTGCTCTTCGGGGCCCTCACTCCCTGTTCTCTGGT
ACTGCTACCGCCTGGGCTCCCAAGACATGCAGGCCCTAGGGGCTGGGAGCCGAGCTGGGGGTGTTCTGGT
TGGGCCTGTGGGATGCTCGGAGGCCGGCGGCCAAGCCAGGGGGTCTGGGGATCCCGGGGAAGGACCT
AGGACGGAAGGCCTAGTGAGCCGGCGGCTTCGGGCCTACGCAAGGCCTACTCCTGGGCTGGGATGGGTA
GAGTGAGGCGGGCAGCTCAGGGTGGCCAGGCCCTGGGAGAGGGCCAGGGGTCTAGGTATTCAGCGCCC
AGGCCTGCTTTTCTACCAGACCTGCCTTCAGCCCCCTTTGTGCCGCGGGACGCCAGCGGCACGACGTG
GAGCTCCTGGAGAGCAGCTTCCCTGCCATTTTGCGGGACTTCGGGGCTGTGAGCTGGGACTTCTCAGGGA
CTACCCCTCCGCCTCGGGGCTGGTCCCCACCTCTGGCCCCGGGTGCTACCAGCTCCTGCTGTACCAAGC
AGGCCGGTGCCAACCCAGCAACTGCCGCGGTGCCGGGGGCTATCGGGCACTGAGGGGGCTTCGAAGC
TTTATGAGTGCCAACACCTTCGCAATGCCGGCTTTTCCGTTCTCCTGCCTGGGGCCCGGCTCGAGGGCC
GCTGTGGGCCCAACCAATGCCCGGTGAGTGCATCTGGGCCAAAGATCCCTCCTGGCTGTGAGCTGGT
GGTCCGGGTGAGCCCCAGTGTGGGCTGAGGGCACTGTCTACTGGTGGACGACTCTTTTCTACACACA
GTGGCTACAATGGCTCCCCGAAGATGGGCCTCGAGTGGTCTTCATCGTGGACCTCTGGCACCCCAACG
TGGCAGGGGCTGAGCGCCAGGCCCTCGACTTTGTCTTCGCCCCAGACCCT

ACGCGTACGCGGCCGCTCGAGCAGAACTCATCTCAGAAGAGGATCTGGCAGCAATGATATCCTGGATT
ACAAGGATGACGACGATAAGGTTTAA



[View online »](#)

Protein Sequence: >RC219226 protein sequence
Red=Cloning site Green=Tags(s)

MKEGRGSFSVERGPRKERETAQSGMWKGNPAGSQGAAMEGTGGELGGQGNWGPEDAPGLLARASLIMLP
 WPLPLASSALTLFLGALTSFLWYCYRLGSQDMQALGAGSRAGGVRGGPVGCSEAGGPPGGPGDPGEGP
 RTEGLVSRRLRAYARRYSWAGMGRVRRAAQGGPGRGPVGLGIQRPGLLFLPDLPSAPFVPRDAQRHV
 ELLESSFPAILRDFGAVSWDFSGTTPPRGWSPPLAPGCYQLLLYQAGRCQPSNCRRCPGAYRALRGLRS
 FMSANTFGNAGFSVLLPGARLEGRCPNTARVRCHLGLKIPPGCELVVGGEPCQWAEHGCLLVDDSFLLHT
 VAHNGSPEDGPRVVFIVDLWHPNVAGAERQALDFVFAPDP

TRTRPLEQKLISEEDLAANDILDYKDDDDKV

Chromatograms: https://cdn.origene.com/chromatograms/mk6465_b05.zip

Restriction Sites: SgfI-MluI

Cloning Scheme:

Cloning sites used for ORF Shuttling:



* The last codon before the Stop codon of the ORF

ACCN: NM_181718

ORF Size: 1170 bp

OTI Disclaimer: The molecular sequence of this clone aligns with the gene accession number as a point of reference only. However, individual transcript sequences of the same gene can differ through naturally occurring variations (e.g. polymorphisms), each with its own valid existence. This clone is substantially in agreement with the reference, but a complete review of all prevailing variants is recommended prior to use. [More info](#)

OTI Annotation: This clone was engineered to express the complete ORF with an expression tag. Expression varies depending on the nature of the gene.

Components: The ORF clone is ion-exchange column purified and shipped in a 2D barcoded Matrix tube containing 10ug of transfection-ready, dried plasmid DNA (reconstitute with 100 ul of water).

Reconstitution Method:

1. Centrifuge at 5,000xg for 5min.
2. Carefully open the tube and add 100ul of sterile water to dissolve the DNA.
3. Close the tube and incubate for 10 minutes at room temperature.
4. Briefly vortex the tube and then do a quick spin (less than 5000xg) to concentrate the liquid at the bottom.
5. Store the suspended plasmid at -20°C. The DNA is stable for at least one year from date of shipping when stored at -20°C.

RefSeq: [NM_181718.4](#)

RefSeq Size: 1562 bp

RefSeq ORF: 1173 bp

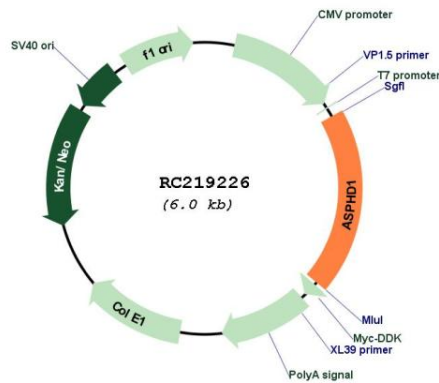
Locus ID: 253982

UniProt ID: [Q5U4P2](#)

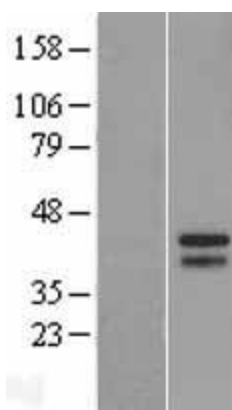
Cytogenetics: 16p11.2

MW: 41.1 kDa

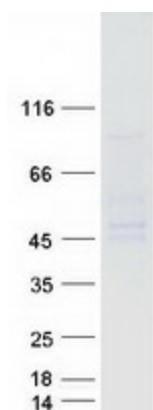
Product images:



Circular map for RC219226



Western blot validation of overexpression lysate (Cat# [LY405633]) using anti-DDK antibody (Cat# [TA50011-100]). Left: Cell lysates from untransfected HEK293T cells; Right: Cell lysates from HEK293T cells transfected with RC219226 using transfection reagent MegaTran 2.0 (Cat# [TT210002]).



Coomassie blue staining of purified ASPHD1 protein (Cat# [TP319226]). The protein was produced from HEK293T cells transfected with ASPHD1 cDNA clone (Cat# RC219226) using MegaTran 2.0 (Cat# [TT210002]).