

## Product datasheet for RC219220

### SHF (NM\_138356) Human Tagged ORF Clone

#### Product data:

Product Type:	Expression Plasmids
Product Name:	SHF (NM_138356) Human Tagged ORF Clone
Tag:	Myc-DDK
Symbol:	SHF
Mammalian Cell Selection:	Neomycin
Vector:	pCMV6-Entry (PS100001)
E. coli Selection:	Kanamycin (25 ug/mL)
ORF Nucleotide Sequence:	>RC219220 representing NM_138356 Red=Cloning site Blue=ORF Green=Tags(s)

TTTTGTAATACGACTCACTATAGGGCGGCCGGGAATTCGTCGACTGGATCCGGTACCGAGGAGATCTGCC  
GCCCGATCGCC

ATGCAGCAGGAGGGAGGACCCGTGAGGAGCGCCCCCTGTAGGACCGGAACCCTGGAGGGTTCGCGGCAAG  
GGTCTCCGGGTCATAGGAAACGGGCATCCCCAAGGGTAGTCTGAGTTCGCCCCAGCCCCATTCTGGAT  
GCTCACGCCGTCTCCCTAAACTCCCCTGCGCTACCGGGAGCCCATCTCATCACCACAGCCCGTG  
GCTAATGGGCCAAAACAGAAGAAGAAAAGCAACTGGCGGAGTACAACGCGCTCGCATTATCAGACTCA  
GGGACAGGCTGGAACCTCGCCCCCTAGCTATCCTAGAAGACTATGCGGACCCGTTTGATGTTCCAGGAGC  
TGGCGAAGGCTCAGCAGGAGCTTCAAGGAGCCCGAGAGAAGGTCCCTGAAAATGATGGCTACATGGAGCCC  
TATGAGGCTCAAAAGATGATGGCCGAGATCCGGGGCTCCAAGGAGACAGCAACTCAGCCCTTGCCTCTGT  
ATGACACACCCTATGAGCCAGAGGAGGATGGGGCCACCCCGAAGGTGAGGGGGCCCCCTGGCCCCGGGA  
GTCCCGCTGCCAGAGGATGATGAGAGGCCCCCTGAGGAGTATGACCAGCCCTGGGAGTGAAGAAGGAG  
CGGATTTCAAAGCCTTTGCAGTTGACATTAAGGTCATCAAAGACCTACCTTGGCCTCCACCTGTGGGAC  
AGCTGGACAGCAGCCCTCCCTGCCTGATGGGGACAGGGACATCTCCGGTCCAGCCTCGCCCTCCCTGA  
GCCAGCCTGGAGACAGCAGCGCCAGTTTGAAGGACCGGAGAAGAGCTGCCTGTACCTGGCCGGGAG  
GAGAAGGGGGCGGTACCTCCCCGACTCTCTGCAGGGAACCCCAAGTCAGCCAAACCCTAAGCATGGAGC  
CCAGCAGCCCCCTGGGGGAGTGGACAGATCCAGCACTGCCTCTGGAACCCAGGTCTGGTATCACGGGGC  
CATCAGCCGAACCGACGCCGAGAACCTGCTCCGGCTGTGCAAAGAGGCCAGCTACCTGGTGCACAACAGT  
GAGACCAGCAAGAATGACTTCTCCCTCTCCCTCAAGAGCAGCCAGGGATTGATGCACATGAAGCTGTCCC  
GAACCAAGGAACAAAATATGTGCTGGGCCAGAACAGCCCGCCCTTACGACAGCTCCCTGAAATTGTGCA  
CCTACTATGCCAGCCGCAAGCTACCCATTAAGGGAGCCGAACACATGTCCCTGCTTACCTGTGGCCATC  
CGGACTCTT

ACGCGTACGCGGCCGCTCGAGCAGAACTCATCTCAGAAGAGGATCTGGCAGCAAATGATATCCTGGATT  
ACAAGGATGACGACGATAAGGTTTAA



[View online >](#)

**Protein Sequence:** >RC219220 representing NM\_138356  
Red=Cloning site Green=Tags(s)

MQQEGGPVRSAPCRTGTLEGSRQGSPGHRKRASPKGSLSSAQPHSWMLTPSPLNSHCAHREPISSSPQPV  
 ANGPKQKKKSNWRSTTRLRRIIRLRDRLEPRPLAILEDYADPFVQETGEGSAGASGAPEKVPENDGYMEP  
 YEAQKMMAEIRGSKETATQPLPLYDTPYEPEEDGATPEGEGAPWPRESRLEPDDERPPEEYDQPWEWKKE  
 RISKAFVVDIKVIKDLWPVPPVGLDSSPSLPDGDRDISGPASPLPEPSLEDSSAQFEGPEKSCLSPGRE  
 EKGRLLPRLSAGNPKSAKPLSMEPSSPLGEWTDPALPLENQVWYHGAISRDAENLLRLCKEASYLVRNS  
 ETSKNDFSLSLKSSQGFMMHKL SRTKEHKYVVLGQNSPPFSSVPEIVHHYASRKLPIKGAEHMSLLYPVAI  
 RTL

TRTRPLEQKLISEEDLAANDILDYKDDDDKV

**Chromatograms:** [https://cdn.origene.com/chromatograms/mk8022\\_b08.zip](https://cdn.origene.com/chromatograms/mk8022_b08.zip)

**Restriction Sites:** SgfI-MluI

**Cloning Scheme:**



**ACCN:** NM\_138356

**ORF Size:** 1269 bp

**OTI Disclaimer:** The molecular sequence of this clone aligns with the gene accession number as a point of reference only. However, individual transcript sequences of the same gene can differ through naturally occurring variations (e.g. polymorphisms), each with its own valid existence. This clone is substantially in agreement with the reference, but a complete review of all prevailing variants is recommended prior to use. [More info](#)

**OTI Annotation:** This clone was engineered to express the complete ORF with an expression tag. Expression varies depending on the nature of the gene.

**Components:** The ORF clone is ion-exchange column purified and shipped in a 2D barcoded Matrix tube containing 10ug of transfection-ready, dried plasmid DNA (reconstitute with 100 ul of water).

- Reconstitution Method:**
1. Centrifuge at 5,000xg for 5min.
  2. Carefully open the tube and add 100ul of sterile water to dissolve the DNA.
  3. Close the tube and incubate for 10 minutes at room temperature.
  4. Briefly vortex the tube and then do a quick spin (less than 5000xg) to concentrate the liquid at the bottom.
  5. Store the suspended plasmid at -20°C. The DNA is stable for at least one year from date of shipping when stored at -20°C.

**RefSeq:** [NM\\_138356.2](#), [NP\\_612365.2](#)

**RefSeq Size:** 2517 bp

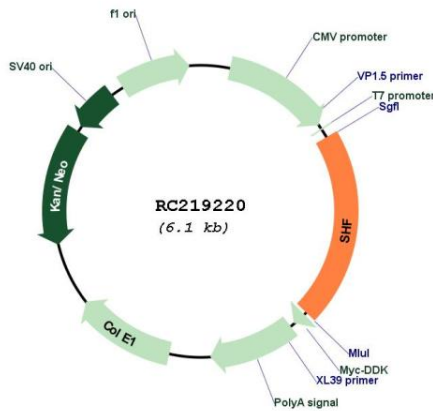
**RefSeq ORF:** 1272 bp

**Locus ID:** 90525

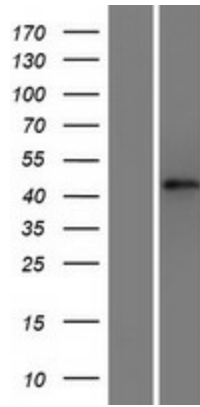
**Cytogenetics:** 15q21.1

**MW:** 46.6 kDa

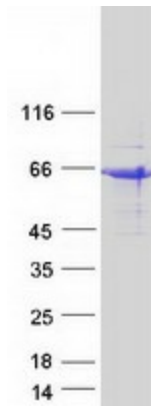
**Product images:**



Circular map for RC219220



Western blot validation of overexpression lysate (Cat# [LY408628]) using anti-DDK antibody (Cat# [TA50011-100]). Left: Cell lysates from untransfected HEK293T cells; Right: Cell lysates from HEK293T cells transfected with RC219220 using transfection reagent MegaTran 2.0 (Cat# [TT210002]).



Coomassie blue staining of purified SHF protein (Cat# [TP319220]). The protein was produced from HEK293T cells transfected with SHF cDNA clone (Cat# RC219220) using MegaTran 2.0 (Cat# [TT210002]).