

Product datasheet for RC219213

SP6 (NM_199262) Human Tagged ORF Clone

Product data:

Product Type:	Expression Plasmids
Product Name:	SP6 (NM_199262) Human Tagged ORF Clone
Tag:	Myc-DDK
Symbol:	SP6
Synonyms:	EPFN; EPIPROFIN; KLF14
Mammalian Cell Selection:	Neomycin
Vector:	pCMV6-Entry (PS100001)
E. coli Selection:	Kanamycin (25 ug/mL)
ORF Nucleotide Sequence:	>RC219213 ORF sequence Red=Cloning site Blue=ORF Green=Tags(s)

TTTTGTAATACGACTCACTATAGGGCGGCCGGAATTCGTCGACTGGATCCGGTACCGAGGAGATCTGCC
GCC**CGATCGCC**

ATGCTAACCGCTGTCTGCGGCTCTTGGGAGCCAGCACAGGAAGCGCCGACGCCTCCCCGCGCGCC
TCGACCTGCAGCCTCTCCAACTTACCAGGGCCACAGAGCCCTGAGGCCGGGACTACCCCTCCCCGCT
GCAGCTGGAGAGCTGCAGAGCCTCCCGCTGGGCCGGAGGTGGACTTCTCGCAGGGCTATGAGCTGCCA
GGGGCCTCCTCGCGGTAACCTGCGAGGACCTGAAAAGCGACAGTCCCTTGGCCCCGGGCCCTTTTCCA
AGCTCCTGCAGCCGACATGTACACCATTATGAATCGTGGTTTCAGGCCGACTCACCCAGGCGGGAGGA
TGCTCGTGGTGGACCTTCATCCGGGCACCAGCTGGATGGACCTCCCCACACTCAGGGCGCGCTGACC
TCACCTGGCCACCCGGGGCGCTTCAGGCGGGCTTGGGGGCTACGTGCGAGACCACAGCTTTGTGCC
CGCCACCCACCCGCATGCGCACCACTCCTTCCAGCTGCCGGAGGGCAGCATCTCTAGGGCCGCCGA
CGGGGCTAAGGCCTTGAAGTAGCCGCCCGGAGTCTCAAGGGCTGGATTCCAGCCTGGACGGGGCGGCG
CGTCCCAAAGGCTCCCGGCGGTGGTGGCCGAGCTCAGGCCAGACGCTGTGCTGCCCCAACTGTCT
TGGAGGCGGAGCGACTGGGGCTCCATGTGGGCCCGATGGGGCAAGAAGAAGCATTTGCACAACGCCA
CATCCCGGGCTGCGGAAAGCCTACGCCAAGACGTCGCACCTGAAGGCGCACCTGCGCTGGCACAGCGGC
GACCGTCCCTTCGTGTGCAACTGGCTCTTCTGCGGCAAGCGCTTACGCGCTCGGACGAGCTGCAGCGCC
ACCTCCAGACCCACCCGGCACCAAGAAGTCCCTGTGCACTGTCAGCCGCGTCTTATGCGCAGCGA
CCACCTGGCCAAGCACATGAAAACCCACAGGGCGCAAGGAGGAGGCGGCTGGGGCGGCTCGGGAGAG
GGCAAGGCCGGCGGCGAGTGGAGCCCCCGGGGCAAAGGCAAACGCGAGGCCGAGGGCAGCGTGGCTC
CCTCCAAC

ACGCGTACGCGGCCGCTCGAGCAGAACTCATCTCAGAAGAGGATCTGGCAGCAAATGATATCCTGGATT
ACAAGGATGACGACGATAAGGTTTAA



[View online >](#)

Protein Sequence: >RC219213 protein sequence
Red=Cloning site Green=Tags(s)

MLTAVCGSLGSQHT EAPHASPPRLDLQPLQTYQGHTSPEAGDYPSLQPGELQSLPLGPEVDFSQGYELP
 GASSRVT CEDLES DSPLAPGPF SKLLQPDMSHHYESWFRPTHGAEDGSWDLHPGTSWMDLPHTQGALT
 SPGHPGALQAGLGGYVGDHQLCAPPHPHAAHLLPAAGGQHLLGPPDGAKALEVAAPESQGLDSSLDGAA
 RPKGSRRSVPRSSGQTVCRCPNLEAERLGAPCGPDGGKKKHLHNCHIPGCGKAYAKTSHLKAHLRWHSG
 DRPFVCNWLFCGKRFTRSDQLRHLQTHGTGKKFPCA VCSRVMRSDHLAKHMKTHEGAKEEAAGAASGE
 GKAGGAVEPPGGK GKREAE GSVAPSN

TRTRPLEQKLISEEDLAANDILDYKDDDDKV

Chromatograms: https://cdn.origene.com/chromatograms/mk6602_f04.zip

Restriction Sites: SgfI-MluI

Cloning Scheme:



* The last codon before the Stop codon of the ORF

ACCN: NM_199262

ORF Size: 1128 bp

OTI Disclaimer: The molecular sequence of this clone aligns with the gene accession number as a point of reference only. However, individual transcript sequences of the same gene can differ through naturally occurring variations (e.g. polymorphisms), each with its own valid existence. This clone is substantially in agreement with the reference, but a complete review of all prevailing variants is recommended prior to use. [More info](#)

OTI Annotation: This clone was engineered to express the complete ORF with an expression tag. Expression varies depending on the nature of the gene.

Components: The ORF clone is ion-exchange column purified and shipped in a 2D barcoded Matrix tube containing 10ug of transfection-ready, dried plasmid DNA (reconstitute with 100 ul of water).

Reconstitution Method:

1. Centrifuge at 5,000xg for 5min.
2. Carefully open the tube and add 100ul of sterile water to dissolve the DNA.
3. Close the tube and incubate for 10 minutes at room temperature.
4. Briefly vortex the tube and then do a quick spin (less than 5000xg) to concentrate the liquid at the bottom.
5. Store the suspended plasmid at -20°C. The DNA is stable for at least one year from date of shipping when stored at -20°C.

RefSeq: [NM_199262.3](#)

RefSeq Size: 3794 bp

RefSeq ORF: 1131 bp

Locus ID: 80320

UniProt ID: [Q3SY56](#)

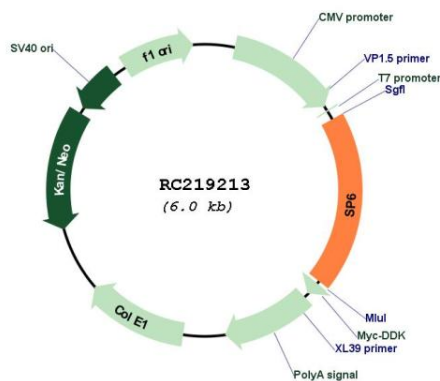
Cytogenetics: 17q21.32

Protein Families: Transcription Factors

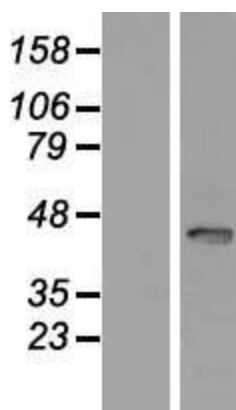
MW: 39.8 kDa

Gene Summary: SP6 belongs to a family of transcription factors that contain 3 classical zinc finger DNA-binding domains consisting of a zinc atom tetrahedrally coordinated by 2 cysteines and 2 histidines (C2H2 motif). These transcription factors bind to GC-rich sequences and related GT and CACCC boxes (Schoy et al., 2000 [PubMed 11087666]).[supplied by OMIM, Mar 2008]

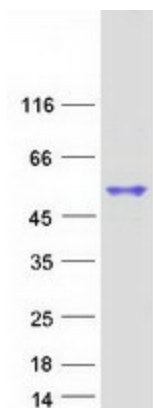
Product images:



Circular map for RC219213



Western blot validation of overexpression lysate (Cat# [LY404600]) using anti-DDK antibody (Cat# [TA50011-100]). Left: Cell lysates from untransfected HEK293T cells; Right: Cell lysates from HEK293T cells transfected with RC219213 using transfection reagent MegaTran 2.0 (Cat# [TT210002]).



Coomassie blue staining of purified SP6 protein (Cat# [TP319213]). The protein was produced from HEK293T cells transfected with SP6 cDNA clone (Cat# RC219213) using MegaTran 2.0 (Cat# [TT210002]).