

Product datasheet for RC219210

Trypsin (PRSS1) (NM_002769) Human Tagged ORF Clone

Product data:

Product Type:	Expression Plasmids
Product Name:	Trypsin (PRSS1) (NM_002769) Human Tagged ORF Clone
Tag:	Myc-DDK
Symbol:	Trypsin
Synonyms:	TRP1; TRY1; TRY4; TRYP1
Mammalian Cell Selection:	Neomycin
Vector:	pCMV6-Entry (PS100001)
E. coli Selection:	Kanamycin (25 ug/mL)
ORF Nucleotide Sequence:	>RC219210 representing NM_002769 Red=Cloning site Blue=ORF Green=Tags(s)

TTTTGTAATACGACTCACTATAGGGCGGCCGGAATTCGTCGACTGGATCCGGTACCGAGGAGATCTGCC
GCC**CGATCGCC**

ATGAATCCACTCCTGATCCTTACCTTTGTGGCAGCTGCTCTTGCTGCCCCCTTTGATGATGATGACAAGA
TCGTTGGGGGCTACAACGTGAGGAGAATTCTGTCCCCTACCAGGTGTCCTGAATTCTGGCTACCACTT
CTGTGGTGGCTCCCTCATCAACGAACAGTGGGTGGTATCAGCAGGCCACTGCTACAAGTCCCGCATCCAG
GTGAGACTGGGAGAGCACAAACATCGAAGTCTGGAGGGGAATGAGCAGTTCATCAATGCAGCCAAGATCA
TCCGCCACCCCAATACGACAGGAAGACTCTGAACAATGACATCATGTTAATCAAGCTCTCCTCAGGTGC
AGTAATCAACGCCGCGTGTCCACCATCTCTGCCCACCGCCCCCAGCCACTGGCAGCAAGTGCCTC
ATCTCTGGCTGGGGCAACACTGCGAGCTCTGGCGCCGACTACCCAGACGAGCTGCAGTGCCTGGATGCTC
CTGTGCTGAGCCAGGCTAAGTGTGAAGCCTCCTACCCTGGAAAGATTACCAGCAACATGTTCTGTGTGGG
CTTCTTGAGGGAGGCAAGGATTCATGTGAGGGTATTCTGGTGGCCCTGTGGTCTGCAATGGACAGCTC
CAAGGAGTTGTCTCTGGGGTGTGGCTGTGCCAGAGAACAAGCCTGGAGTCTACACCAAGGTCTACA
ACTATGTGAAATGGATTAAGAACACCATAGCTGCCAATAGC

ACGCGTACGCGGCCGCTCGAGCAGAACTCATCTCAGAAGAGGATCTGGCAGCAAATGATATCCTGGATT
ACAAGGATGACGACGATAAGGTTTAA



[View online »](#)

Protein Sequence: >RC219210 representing NM_002769
 Red=Cloning site Green=Tags(s)

MNPLLLILTFVAAALAAPFDDDDKIVGGYNCEENSVPYQVSLNSGYHFCGGSLINEQWVVSAGHCYKSRIQ
 VRLGEHNIEVLEGNQFINAAKIIRHPQYDRKTLNNDIMLIKSSRAVINARVSTISLPTAPPATGKCL
 ISGWGNTASSGADYPDELQCLDAPVLSQAKCEASYPGKITSNMFCVGFLEGGKDCSQGDSGGPVCNGQL
 QGVVSWGDCAQKNKPGVYTKVYNYVKWIKNTIAANS

TRTRPLEQKLISEEDLAANDILDYKDDDDKV

Chromatograms: https://cdn.origene.com/chromatograms/mk6113_h07.zip

Restriction Sites: SgfI-MluI

Cloning Scheme:

Cloning sites used for ORF Shuttling:



* The last codon before the Stop codon of the ORF

ACCN: NM_002769

ORF Size: 741 bp

OTI Disclaimer: The molecular sequence of this clone aligns with the gene accession number as a point of reference only. However, individual transcript sequences of the same gene can differ through naturally occurring variations (e.g. polymorphisms), each with its own valid existence. This clone is substantially in agreement with the reference, but a complete review of all prevailing variants is recommended prior to use. [More info](#)

OTI Annotation: This clone was engineered to express the complete ORF with an expression tag. Expression varies depending on the nature of the gene.

Components: The ORF clone is ion-exchange column purified and shipped in a 2D barcoded Matrix tube containing 10ug of transfection-ready, dried plasmid DNA (reconstitute with 100 ul of water).

Reconstitution Method:

1. Centrifuge at 5,000xg for 5min.
2. Carefully open the tube and add 100ul of sterile water to dissolve the DNA.
3. Close the tube and incubate for 10 minutes at room temperature.
4. Briefly vortex the tube and then do a quick spin (less than 5000xg) to concentrate the liquid at the bottom.
5. Store the suspended plasmid at -20°C. The DNA is stable for at least one year from date of shipping when stored at -20°C.

RefSeq: [NM_002769.5](#)

RefSeq Size: 800 bp

RefSeq ORF: 744 bp

Locus ID: 5644

UniProt ID: [P07477](#)

Cytogenetics: 7q34

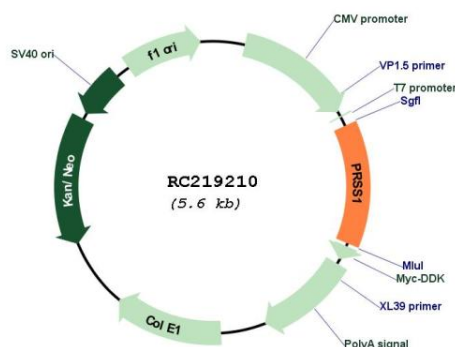
Protein Families: Druggable Genome, Secreted Protein

Protein Pathways: Neuroactive ligand-receptor interaction

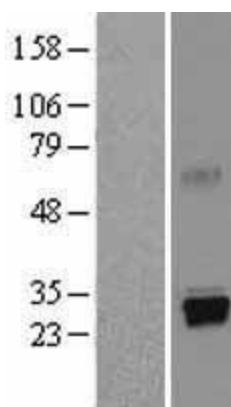
MW: 26.56 kDa

Gene Summary: This gene encodes a trypsinogen, which is a member of the trypsin family of serine proteases. This enzyme is secreted by the pancreas and cleaved to its active form in the small intestine. It is active on peptide linkages involving the carboxyl group of lysine or arginine. Mutations in this gene are associated with hereditary pancreatitis. This gene and several other trypsinogen genes are localized to the T cell receptor beta locus on chromosome 7. [provided by RefSeq, Jul 2008]

Product images:



Circular map for RC219210



Western blot validation of overexpression lysate (Cat# [LY400980]) using anti-DDK antibody (Cat# [TA50011-100]). Left: Cell lysates from untransfected HEK293T cells; Right: Cell lysates from HEK293T cells transfected with RC219210 using transfection reagent MegaTran 2.0 (Cat# [TT210002]).