

Product datasheet for **RC219208L4V**

LAMP1 (NM_005561) Human Tagged ORF Clone Lentiviral Particle

Product data:

Product Type:	Lentiviral Particles
Product Name:	LAMP1 (NM_005561) Human Tagged ORF Clone Lentiviral Particle
Symbol:	LAMP1
Synonyms:	CD107a; LAMPA; LGP120
Mammalian Cell Selection:	Puromycin
Vector:	pLenti-C-mGFP-P2A-Puro (PS100093)
Tag:	mGFP
ACCN:	NM_005561
ORF Size:	1251 bp
ORF Nucleotide Sequence:	The ORF insert of this clone is exactly the same as(RC219208).
OTI Disclaimer:	The molecular sequence of this clone aligns with the gene accession number as a point of reference only. However, individual transcript sequences of the same gene can differ through naturally occurring variations (e.g. polymorphisms), each with its own valid existence. This clone is substantially in agreement with the reference, but a complete review of all prevailing variants is recommended prior to use. More info
OTI Annotation:	This clone was engineered to express the complete ORF with an expression tag. Expression varies depending on the nature of the gene.
RefSeq:	NM_005561.3 , NP_005552.3
RefSeq Size:	2560 bp
RefSeq ORF:	1254 bp
Locus ID:	3916
UniProt ID:	P11279
Cytogenetics:	13q34
Domains:	Lamp
Protein Families:	ES Cell Differentiation/IPS, Transmembrane



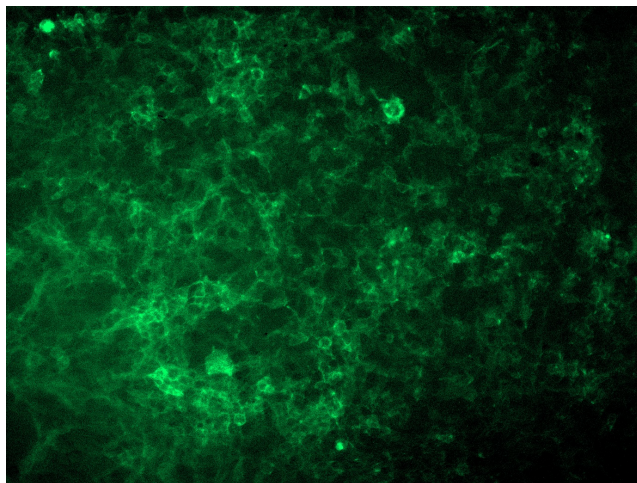
[View online »](#)

Protein Pathways: Lysosome

MW: 44.88 kDa

Gene Summary: The protein encoded by this gene is a member of a family of membrane glycoproteins. This glycoprotein provides selectins with carbohydrate ligands. It may also play a role in tumor cell metastasis. [provided by RefSeq, Jul 2008]

Product images:



[RC219208L4] was used to prepare Lentiviral particles using [TR30037] packaging kit. HEK293T cells were transduced with RC219208L4V particle to overexpress human LAMP1-mGFP fusion protein.