

Product datasheet for RC219200

EHMT2/G9A (EHMT2) (NM_025256) Human Tagged ORF Clone

Product data:

Product Type:	Expression Plasmids
Product Name:	EHMT2/G9A (EHMT2) (NM_025256) Human Tagged ORF Clone
Tag:	Myc-DDK
Symbol:	EHMT2/G9A
Synonyms:	BAT8; C6orf30; G9A; GAT8; KMT1C; NG36
Mammalian Cell Selection:	Neomycin
Vector:	pCMV6-Entry (PS100001)
E. coli Selection:	Kanamycin (25 ug/mL)
ORF Nucleotide Sequence:	>RC219200 representing NM_025256 Red=Cloning site Blue=ORF Green=Tags(s)

TTTTGTAATACGACTCACTATAGGGCGGCCGGGAATTCGTCGACTGGATCCGGTACCGAGGAGATCTGCC
GCC**CGATCGCC**

ATGGCGCGCGGGCGGGAGCTGCAGCGCGCGGCCGCCAGGGGGAGGCCCCCGCTGAGATGGGGCGC
TGCTGCTGGAGAAGAAACCAGAGGAGCCACCGAGAGTTCATGGCTCTTTGGGGACACCCCTCGTAG
TGAAGAAACCTGCCAAGGCCAACCCGACTCCCTGGAGCTGTGGCCCTCATCTCCAGCCTGTGC
ACTGCTACTGTTGGTGATGAGGGGGCTGACACCCCTGTAGGGGTACACCACTCATTGGGGTGAATCTG
AGAATCTTGAGGGAGATGGGACCTCCGTGGGGCCGGATCCTGTGGCCATGCCACAAAGTCATTCCC
CTCTTCCCCCAGCAAGGGGGTTCTGTCTAGCCGGCCAAGATGTCAATGACAGGGCGGGAAAATCA
CCTCCATCTGTCCAGAGTTTGGCTATGAGGCTACTGAGTATGCCAGGAGCCCAGGGAGCTGCAGCAGCAG
GGTCTGAACCCCTCCAGCCACCACGAGCCAGAGGGACAGCCCAAGGTCCACCGAGCCCGCAAAACCAT
GTCCAAACCAGGAAATGGACAGCCCCCGGTCCCTGAGAAGCGGCCCCCTGAAATACAGCATTTCCGCATG
AGTGATGATGTCCACTACTGGGAAAGGTGACCTCAGATCTGGCCAAAAGGAGGAAGCTGAACTCAGGAG
GTGGCCTGTGGAGGAGTTAGGTTCTGCCCGCGTTCAGGAGAAGTGACCCTGACGAAAGGGGACCCCGG
GTCCCTGGAGGAGTGGGAGACGGTGGTGGTGATGACTTCAGTCTCTACTATGATTCCTACTCTGTGGAT
GAGCGCGTGGACTCCGACAGCAAGTCTGAAGTTGAAGCTCTAAGTGAACAAGTGAAGAGGAGGAGG
AGGAAGAGGAGGAAGAAGAAGAAGAGGAAGAGGAGGAGGAAGAGGAAGAAGAAGAGGAAGATGAGGAGTC
AGGGAATCAGTCAGATAGGAGTGGTCCAGTGGCCGGCGCAAGGCCAAGAAGAAATGGCGAAAAGACAGC
CCATGGGTGAAGCCGTCTCGAAACGGCGCAAGCGGGAGCCTCCGCGGGCCAAGGAGCCACGAGGAGTGT
CCAATGACACATCTTCGCTGGAGACAGAGCGAGGGTTTGGAGAGTTGCCCTGTGCAGCTGCCGATGGA
GGCACCCAAGATTGACCGCATCAGCGAGAGGGCGGGCACAAGTGCATGGCCACTGAGAGTGTGGACGGA
GAGCTGTCAGGCTGCAATGCCGCATCCTCAAGCGGGAGACCATGAGGCCATCCAGCCGTGTGGCCCTGA
TGGTGCTCTGTGAGACCCACCGCCCGCATGGTCAAACACCACTGCTGCCCGGGCTGCGGCTACTTCTG
CACGGCGGGCACCTTCTGGAGTGCCACCCTGACTTCCGTGTGGCCACCCTTCCACAAGCCCTGTGTG



[View online >](#)

TCTCAGCTGAATGGGATGGTCTTCTGTCCCCACTGTGGGAGGATGCTTCTGAAGCTCAAGAGGTGACCA
TCCCCGGGGTGACGGGGTGACCCACCGGCCGCACTGCAGCTCCTGCACCCCCACCCCTGTCCCAGGA
TGTCGCCGGGAGAGCAGACACTTCTCAGCCCAGTGCCCGGATGCGAGGGCATGGGGAACCCCGCGCCCG
CCCTGCGATCCCCGGCTGACACCATTGACAGCTCAGGGCCCTCCTGACCCTGCCAATGGGGGTGCC
TTTCAGCCGTGGGGTGCCACTGGGGCCAGGCCGGGAGGCCCTGGAAAAGGCCCTGGTATCCAGGAGTC
AGAGAGGCGGAAGAAGCTCCGTTTCCACCCTCGGCAGTTGTACCTGTCCGTGAAGCAGGGCGAGCTGCAG
AAGGTGATCCTGATGCTGTTGGACAACCTGGACCCCAACTTCCAGAGCGACCAGCAGAGCAAGCGCACGC
CCCTGCATGCAGCCGCCAGAAGGGCTCCGTGGAGATCTGCCATGTGCTGCTGCAGGCTGGAGCCAACAT
AAATGCAGTGGACAAACAGCAGCGGACGCCACTGATGGAGGCCGTGGTGAACAACCACCTGGAGGTAGCC
CGTTACATGGTGCAGCGTGGTGGCTGTGTCTATAGCAAGGAGGAGGACGGTTCCACCTGCCTCCACCACG
CAGCCAAAATCGGGAACCTGGAGATGGTGCAGCCTGCTGCTGAGCACAGGACAGGTGGACGTCAACGCCCA
GGACAGTGGGGGTGGACGCCCATCATCTGGGCTGCAGAGCACAAGCACATCGAGGTGATCCGCATGCTA
CTGACGCGGGGCGCCGACGTACCCTCACTGACAACGAGGAGAACATCTGCCTGCACTGGGCTCCTTCA
CGGGCAGCGCCGCATCGCCGAAGTCCTTCTGAATGCGCGCTGTGACCTCCATGTGTCAACTACCATGG
GGACACCCCTGCACATCGCAGCTCGGGAGAGCTACCATGACTGCGTGTGTTATTCTGTGACGTGGG
GCCAACCTGAGCTGCGGAACAAAGAGGGGGACACAGCATGGGACCTGACTCCCGAGCGCTCCGAGTGT
GGTTTGCCTTCAACTCAACCGCAAGCTCCGACTTGGGGTGGGAAATCGGGCCATCCGCACAGAGAAGAT
CATCTGCCGGGACGTGGCTCGGGGCTATGAGAACGTGCCATTCCCTGTGTCAACGGTGTGGATGGGGAG
CCCTGCCCTGAGGATTACAAGTACATCTCAGAGAACTGCGAGACGTCCACCATGAACATCGATCGCAACA
TCACCCACCTGCAGCACTGCACGTGTGTGGACGACTGCTTAGCTCCAACCTGCCTGTGCGGCCAGCTCAG
CATCCGGTGTGGTATGACAAGGATGGGCGATTGCTCCAGGAATTTAACAAGATTGAGCCTCCGCTGATT
TTCGAGTGAACCAGGCGTGTCTATGCTGGAGAACTGCAAGAACCAGGTCGTACAGAGTGGCATCAAGG
TGCGGCTACAGCTTACCGAACAGCCAAGATGGGCTGGGGGTCCGCGCCCTGCAGACCATCCACAGGG
GACCTTCTGCGAGTATGTCGGGGAGCTGATCTCTGATGCTGAGGCTGATGTGAGAGAGGATGATTCT
TACCTTTCGACTTAGACAACAAGGATGGAGAGGTGACTGCATAGATGCCGTTACTATGGCAACATCA
GCCGTTTCAACACCTGTGTGACCCCAACATCATTCCCGTCCGGGTCTTATGCTGCACCAAGACCT
GCGATTTCCACGCATCGCCTTCTCAGTTCGAGACATCCGGACTGGGGAGGAGCTAGGGTTTGACTAT
GGCGACCGCTTCTGGGACATCAAAGCAAATATTTACCTGCCAATGTGGCTCTGAGAAGTGCAAGCACT
CAGCCGAAGCCATTGCCCTGGAGCAGAGCCGTCTGGCCCGCTGGACCCACACCTGAGCTGCTGCCCGA
GCTCGGCTCCCTGCCCTGTCAACACA

ACGCGTACGCGGCGCTCGAGCAGAACTCATCTCAGAAGAGGATCTGGCAGCAAATGATATCCTGGATT
ACAAGGATGACGACGATAAGGTTTAA

Protein Sequence: >RC219200 representing NM_025256
Red=Cloning site Green=Tags(s)

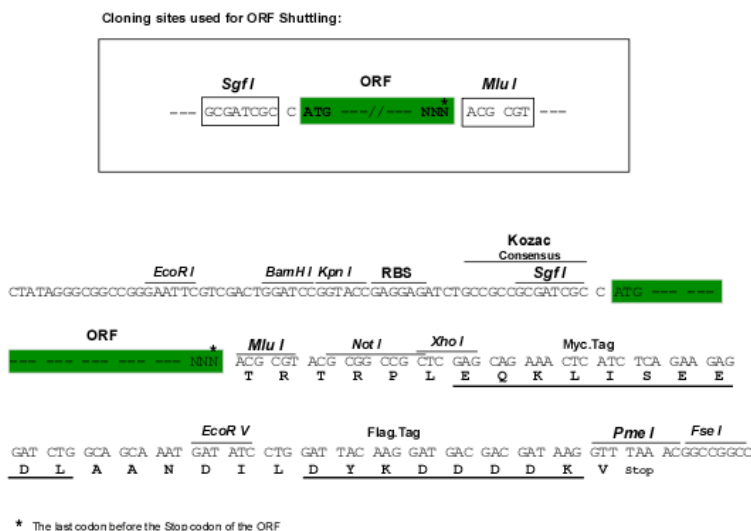
MAAAGAAAAAAEAGEAPAEMGALLLEKETRGATERVHGSLGDTPRSEETLPKANPDSLEPAGPSSPASV
 TVTVGDEGADTPVGATPLIGDESENLEGDGLRGGRIILLGHATKSFSSPSKGGSCPSRAKMSMTGAGKS
 PPSVQSLAMRLLSMPGAQAAAAAGSEPPATTSPGQPKVHRARKTMSKPGNGQPPVPEKRPPETIQHFRM
 SDDVHSLGKVTSDLAKRRKLNSSGGGLSEELGSARRSGEVTLTKGDPGSLEEWETVVGDDFSLYYDSYSVD
 ERVDSKSEVEALTEQLSEEEEEEEEEEEEEEEEEEEEEDEESGNQSDRSGSSGRRKAKKKWRKDS
 PWVKPSRKRKRKREPPRAKEPRGVSNDTSSLETERGFEELPLCSCRMEAPKIDRISERAGHKCMATESVDG
 ELSGCNAAILKRETMRPSRVALMVLCETHRARMVKHHCPCGCGYFCTAGTFLECHPDFRVAHRFHKACV
 SQLNGMVFCPHCGEDASEAQEVTIPRGDVTTPAGTAAPAPPPLSQDVPGRADTSQPSARMRGHGEP
 PCDPLADTIDSSGPSLTLPNGGCLSAVGLPLGPGREALEKALVIQESERRKRLRFHPRQLYLSVKQGELQ
 KVIILMLLDNLDPNFQSDQSKRTPHAAQKGSVEICHVLLQAGANINAVDKQQRTPLEAVVNNHLEVA
 RYMVQRGGCVYSKEEDGSTCLHHAAKIGNLEMVSLLLSTGQVDVNAQDSGGWTPIIWAAEHKHIEVIRML
 LTRGADVTLTDNEENICLHWASFTGSAIAEVLLNARCDLHAVNYHGDTPLHIAARESYPHDCVLLFLSRG
 ANPELRNKEGDTAWDLTPERSDWFALQLNRKLRLLGVGNRAIRTEKIIICRDVARGYENVPICVNGVDGE
 PCPEDYKYSISNCETSTMNIDRNITHLQHCTCVDDCSSNCLCGQLSIRCWYDKGRLLQEFNKIEPPLI
 FECNQACSCWRNCKNRVQSGIKVRLQLYRTAKMGWVRLQTIPOGTFICEYVGELEISDAEADVREDD
 YLFDLNDKGDGEVYCIDARYYGNISRFINHLCDPNIIIPVRVFMHLDLRFPRIAFFSSRDIRTGEEGLFDY
 GDRFWDIKSKYFTCCGSEKCKHSAEIALEQSRRLARLDHPPELLPELGLSPPVNT

TRTRPLEQKLISEEDLAANDILDYKDDDDKV

Chromatograms: https://cdn.origene.com/chromatograms/mg2817_f09.zip

Restriction Sites: SgfI-MluI

Cloning Scheme:



ACCN: NM_025256

ORF Size: 3528 bp

OTI Disclaimer: Due to the inherent nature of this plasmid, standard methods to replicate additional amounts of DNA in E. coli are highly likely to result in mutations and/or rearrangements. Therefore, OriGene does not guarantee the capability to replicate this plasmid DNA. Additional amounts of DNA can be purchased from OriGene with batch-specific, full-sequence verification at a reduced cost. Please contact our customer care team at custsupport@origene.com or by calling 301.340.3188 option 3 for pricing and delivery.

The molecular sequence of this clone aligns with the gene accession number as a point of reference only. However, individual transcript sequences of the same gene can differ through naturally occurring variations (e.g. polymorphisms), each with its own valid existence. This clone is substantially in agreement with the reference, but a complete review of all prevailing variants is recommended prior to use. [More info](#)

OTI Annotation: This clone was engineered to express the complete ORF with an expression tag. Expression varies depending on the nature of the gene.

Components: The ORF clone is ion-exchange column purified and shipped in a 2D barcoded Matrix tube containing 10ug of transfection-ready, dried plasmid DNA (reconstitute with 100 ul of water).

Reconstitution Method:

1. Centrifuge at 5,000xg for 5min.
2. Carefully open the tube and add 100ul of sterile water to dissolve the DNA.
3. Close the tube and incubate for 10 minutes at room temperature.
4. Briefly vortex the tube and then do a quick spin (less than 5000xg) to concentrate the liquid at the bottom.
5. Store the suspended plasmid at -20°C. The DNA is stable for at least one year from date of shipping when stored at -20°C.

RefSeq: [NM_025256.4](#), [NP_079532.4](#)

RefSeq Size: 3892 bp

RefSeq ORF: 3531 bp

Locus ID: 10919

UniProt ID: [Q96KQ7](#)

Cytogenetics: 6p21.33

Domains: SET, ANK, PreSET, Pre-SET

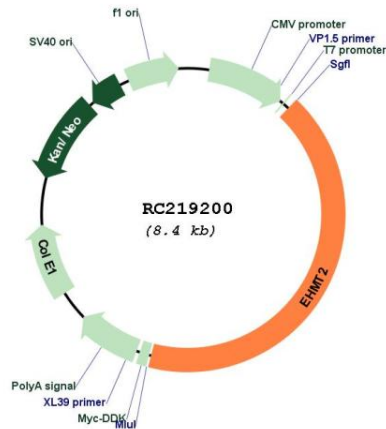
Protein Families: Druggable Genome

Protein Pathways: Lysine degradation

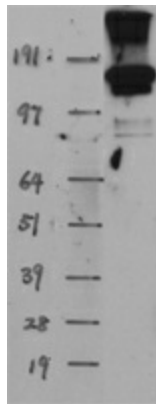
MW: 128.8 kDa

Gene Summary: This gene encodes a methyltransferase that methylates lysine residues of histone H3. Methylation of H3 at lysine 9 by this protein results in recruitment of additional epigenetic regulators and repression of transcription. This gene was initially thought to be two different genes, NG36 and G9a, adjacent to each other in the HLA locus. Alternative splicing results in multiple transcript variants. [provided by RefSeq, Jan 2016]

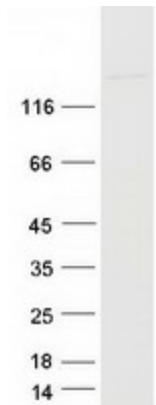
Product images:



Circular map for RC219200



Western blot validation of overexpression lysate (Cat# [LY410814]) using anti-DDK antibody (Cat# [TA50011-100]). Left: Cell lysates from untransfected HEK293T cells; Right: Cell lysates from HEK293T cells transfected with RC219200 using transfection reagent MegaTran 2.0 (Cat# [TT210002]).



Coomassie blue staining of purified EHMT2 protein (Cat# [TP319200]). The protein was produced from HEK293T cells transfected with EHMT2 cDNA clone (Cat# RC219200) using MegaTran 2.0 (Cat# [TT210002]).