

Product datasheet for RC219193

ADAMTSL3 (NM_207517) Human Tagged ORF Clone

Product data:

Product Type:	Expression Plasmids
Product Name:	ADAMTSL3 (NM_207517) Human Tagged ORF Clone
Tag:	Myc-DDK
Symbol:	ADAMTSL3
Synonyms:	ADAMTSL-3
Mammalian Cell Selection:	Neomycin
Vector:	pCMV6-Entry (PS100001)
E. coli Selection:	Kanamycin (25 ug/mL)
ORF Nucleotide Sequence:	>RC219193 representing NM_207517 Red=Cloning site Blue=ORF Green=Tags(s)

TTTTGTAATACGACTCACTATAGGGCGGCCGGAATTCGTCGACTGGATCCGGTACCGAGGAGATCTGCC
GCC**CGATCGCC**

ATGGCTTCTGGACGAGCCCTGGTGGTGTGATAGGGATGGTCTTCATGCACTCTCCCCTCCCGCAGA
CCACAGCTGAGAAATCTCTGGAGCCTATTTCTTCCCGAGTTTGCACCTTCTCCTCAGGGAAGTTTTCT
GGAAGACACAACAGGGGAGCAGTTCCTCACTTATCGCTATGATGACCAGACCTCAAGAACTCGTTCA
GATGAAGACAAAGATGGCACTGGGATGCTTGGGGCGACTGGAGTACTGCTCCCGACCTGTGGGGGAG
GAGCATCATATTCTGCGGAGATGTTTACTGGAAGGAATTGTGAAGGGCAGAACATTCGTACAAGAC
ATGCAGCAATCATGACTGCCCTCAGATGCAGAAGATTTAGAGCCAGCAGTGCCTCAGCCTACAATGAT
GTCCAGTATCAGGGGCATTACTATGAATGGCTCCACGATATAATGATCCTGCTGCCCGTGTGCACTCA
AGTGTCATGCACAAGGACAAAACCTGGTGGTGGAGCTGGCACCTAAGGACTGGATGGAACCTCGTTGCAA
CACGGACTCCTTGGACATGTGTATCAGTGGCATCTGTCCAGGAGTGGGCTGCGATCGGCAACTGGGAAGC
AATGCCAAGGAGGACAACCTGTGGAGTCTGTGCCGCGATGGCTCCACCTGCAGGCTTGTACGGGGACAAT
CAAAGTCACACGTTTCTCCTGAAAAAGAGAAGAAAATGTAATTGCTGTTCTTTGGGAAGTCGAAGTGT
GAGAATTACAGTGAAGGACCTGTCCACCTCTTATTGAATCAAAAACACTTCAAGGAAGCAAAGGAGAA
CACAGCTTTAACAGCCCCGGCGTCTTTGCTGAGAAAACACAACAGTGGAAATTCAGAGGGGCTCCGAGA
GGCAAACCTTTAAGATTCAGGACCTCTGATGGCTGATTTCACTTCAAGACCAGGTACACTGCAGCCAA
AGACAGCGTGGTTCAGTCTCTTTTACCAGCCATCAGTCATCAGTGGAGACAACTGACTTCTTTCCC
TGCACTGTGACGTGTGGAGGAGTTATCAGCTCAATTCTGCTGAATGTGTGGATATCCGCTTGAAGAGGG
TAGTTCCTGACCATTATTGCACTACTACCCTGAAAATGTAACCAAAACCAAACTGAAGGAATGCAG
CATGGATCCCTGCCCATCAAGTATGATGATTTAAAGAGATAATGCCCTATGACCACTTCCAACCTCTTCT
CGCTGGGAACATAATCCTTGGACTGCATGTTCCGTGCTGTTGGAGGAGGATTCAGAGACGGAGCTTTG
TGTGTGTAGAGGAATCCATGCATGGAGAGATATGCAGGTGGAAGAATGGAAGTGCATGTACGCACCCAA
ACCAAGTATGCAAACCTGTAATCTGTTTATTGCCCAAGTGGATTGCCATGGAGTGGTCTCAGTGC



[View online >](#)

ACAGTGACTTGTGGCCGAGGGTTACGGTACCGGTTGTTCTGTGTATTAACCACCGCGGAGAGCATGTTG
 GGGGCTGCAATCCACAACCTGAAGTTACACATCAAAGAAGAATGTGTCAATCCCATCCCCTGTTATAAAC
 AAAAGAAAAAGTCCAGTGAAGCAAAATTCCTTGGCTGAAACAAGCACAAGAACTAGAAGAGACCAGA
 ATAGCAACAGAAGAACCAACGTTTCCAGAACCTGGTCAGCCTGCAGTACCACGTGTGGCCGGGTG
 TGCAGGTCGCGAGGTGAAGTGCCGTGTCTCACATTCACGCAGACTGAGACTGAGCTGCCCGAGGA
 AGAGTGTGAAGGCCCAAGCTGCCACCGAACGGCCCTGCCTCCTGGAAGCATGTGATGAGAGCCCGGCC
 TCCCAGAGCTAGACATCCCTCTCCCTGAGGACAGTGAAGCAGTACGACTGGGATACGCTGGGTTCA
 CCCCTTGACAGCAACATGCTTGGGAGGCATCAAGAAGCCATAGCAGTGTGTTACATATCCAGACCCA
 GCAGACAGTCAATGACAGCTTGTGTATATGGTCCACCGTCTCCAGCCATGAGCCAGGCCCTGTAACACA
 GAGCCCTGTCCCCCAGGTGGCATGTGGCTCTTGGGGCCCTGCTCAGCTACCTGTGGAGTTGGAATTC
 AGACCCGAGATGTGTACTGCCTGCACCCAGGGGAGACCCCTGCCCTCCTGAGGAGTGCCGAGATGAAAA
 GCCCATGCTTTACAAGCATGCAATCAGTTTACTGCCCTCCTGGCTGGCACATTGAAGAATGGCAGCAG
 TGTTCCAGGACTGTGGCGGGGAACTCAGAACAGAAGAGTCACTGTCCGCAGCTGCTAACGGATGGCA
 GCTTTTTGAATCTCTCAGATGAATTGTGCCAAGGACCAAGGCATCGTCTACAAGTCTGTGCCAGGAC
 AGACTGTCTCCACATTTAGCTGTGGGAGACTGGTGAAGTGTCTGTGATTTGGTGTGGAATCCAG
 AGAAGAAAGCAGGTGTGTCAAAGGCTGGCAGCCAAAGGTGGGCGCATCCCCTCAGTGAGATGATGTGCA
 GGGATCTACCAGGGCTCCCTCTTGAAGATCTTGCCAGATGCCTGAGTGCAGTAAAAATCAATCAGAGAT
 GAAGACAAAACCTTGGTGAGCAGGGTCCGCAGATCCTCAGTGTCCAGAGAGTCTACATTCAGACAAGGGAA
 GAGAAGCGTATTAACCTGACCATTGGTAGCAGAGCCTATTTGCTGCCAACACATCCCGTATTAAAGT
 GCCCGTGGCAGCATTCCAGAAATCTCTGATCCAGTGGGAGAAGGATGGCCGTTGCCCTGCAGAACTCCA
 ACGGCTTGGCATCAACAGTCAAGCTCACTAAAAATCCACGGTCTGTGCCCGGACATCGCGGTGATC
 CGGTGCATTGCAGGCTCTGCACAGGAAACAGTTGTGCTCAAGCTCATTGGTACTGACAACCGGCTCATCG
 CAGCCCAAGCCCTCAGGAGCCTATGAGGGAATATCCTGGGATGGACCACAGCGAAAGCAATAGTTTGGG
 AGTCACATGGCACAATAAGGCAAAATGTGGAATAACAAAAATGACCTTTATCTGGATGATGACCACAT
 AGTAACCAGCCTTTCTTGAAGCTCTGTTAGGCCACTGCAGCAATTCTGCAGGAAGCACCACCTCTGGG
 AGTTGAAGAATAAGCAGTTTGAAGCAGCAGTTAAACAAGGAGCATATAGCATGGATACAGCCAGTTTGA
 TGAGCTGATAAGAAACATGAGTCAGCTCATGGAACCCGAGAGGTGAGCGATGATCTTGCCTCCAGCTG
 ATATATCAGCTGGTGGCCGAATTAGCCAAGGCACAGCCAAACACATGCAGTGGCGGGGCATCCAGGAAG
 AGACACCTCTGTGCTCAGCTCAGAGGGGAAACAGGGAGTGTGCCAAAGCTCGCATGCAAAAAACTC
 AGGCAAGCTGACATTCAAGCCGAAAGGACCTGTTCTCATGAGGCAAGGCCAACCTCCCTCAATTTCAAT
 AATAAAACAATAAATCCAGGATTGAAATACAGTATACATTACAAAAAGGACAGAGGTCAATATAC
 TGTGTGACCTTATTACCCCAAGTGAAGCCACATATACATGGACCAAGGATGGAACCTTGTACAGCCCTC
 AGTAAAAATAATTTGGATGGAAGTGGGAAAGTACAGATACAGAACTCTACAAGGAAAGAACAAGGCATA
 TATGAATGTTCTGTAGCTAATCATCTTGGTTTCCAGATGTGGAAAGTTCTTCTGTGCTGTATGCAGAGGCAC
 CTGTCACTTGTCTGTTGAAAGAAATATCACCAAAACCAGAGCACAACCATCTGTCTGTTGTGGTGGAGG
 CATCGTGGAGGCAGCCCTTGGAGCAAACGTGACAATCCGATGTCTGTAAAAGGTGTCCCTCAGCCATAT
 ATAACCTGGTTGAAGAGAGGAGGATCTCTGAGTGGCAATGTTTCCCTTGTCTTTCAATGGATCCCTGTTGT
 TGCAGAATGTTTCCCTTGAATAAGGAACCTACGCTGCATAGCCACCAATGCTCTTGGAAAGGCAGT
 GGCAACATCTGTACTCCACTTGTGGAACGAAGATGGCCAGAGAGTGAATCGTATTTCTGCAAGGCAT
 AAAAAAGTACATTTCCAGGCAACCAACTAGAACCAACAGCAATGACCCAACAGGAGAACCCCGCCTC
 AAGAGCCTTTTTGGGAGCCTGGTAACTGGTCACTTGTCTGCCACCTGTGGTCAATTTGGGAGCCCGCAT
 TCAGAGACCCAGTGTGTGATGGCAATGGGCAGGAAGTGAAGTGGCCCTGTGTGATCACCTCCAGAAG
 CCACTGGCTGGGTTTGGCCCTGTAACATCCGGGACTGCCAGCGAGGTGGTTTCAAAAGTGTGTGGTCA
 AGTGTCTGTGTCTTGGGTTGAAGGATACCACAGTCCGCAGGTGACGTGCAAGCGGACAAAAGCCAAATGG
 AACTGTGCAGGTGGTGTCCAAGAGCATGTGCCCTAAAGACCGGCCTCTGGGAAGAAAACCATGTTTT
 GGTCACTCATGTGTTTCAAGTGGAAACCAGGAAACCGGTGTCTGGACGTTGCATGGCCGCTGTGTGAGGA
 TGCAGCAGCGTACACAGCTTGTCAACACAACAGCTCTGACTCCAACGTGATGACAGAAAGAGACCCAC
 CTTAAGAAGGAACTGCACATCAGGGGCCTGTGATGTGTGTTGGCAGCAGGCCCTTGAAGCCCTGTACA
 GCAGCCTGTGGCAGGGGTTCCAGTCTCGGAAAGTCAACTGTATCCACACAAGGAGTTGCAAACTGTGG
 CCAAGAGACACTGTGTACAGAAAAAGAAACCAATTTCTGGCGGCACTGTCTTGGGCCCTCTGTGATAG
 AGACTGCACAGACACAACCTCACTACTGTATGTTTGTAAAAACATCTTAATTTGTGTTCTCTAGACCGCTAC
 AAACAAAGGTGCTGCCAGTCATGTCAAGAGGGA

ACGCGTACGCGGCCGCTCGAGCAGAACTCATCTCAGAAGAGGATCTGGCAGCAATGATATCCTGGATT
ACAAGGATGACGACGATAAGGTTTAA

Protein Sequence:

>RC219193 representing NM_207517
Red=Cloning site Green=Tags(s)

MASWTSPPWWLIGVMFMHSPLPQTAEKSPGAYFLPEFALSPQGSFLEDTTGEQFLTYRYDDQTSRNRTRS
DEDKDGNDWAWGDWSDCSRTCGGGASYSRLRRLTGRNCEGQNIKYKTCNSNHDCPPDAEDFRAQQCSAYND
VQYQGHYYEWLPRYNDAAPCALCKCHAQQNLVVELAPKVLDTGRNCTDLSLDMCISGICQAVGCDRQLGS
NAKEDNCGVCAGDGSTCRLVRGQSKSHVSPEKREENVIAVPLGSRSVRITVKGPVHLFIESKTLQGSKGE
HSFNPSGVFVVENTTVEFQRGSEKQTFKIPGPLMADFIFKTRYTAAKDSVVQFFFYQPIHQWRQTDFFP
CTVTCGGGYQLNSAECVDIRLKRVPDPHYCHYYPENVKPKPKLKECSMDPCPSSDGFKEIMPYDHFQPLP
RWEHNPWTACSVSCGGGIQRRSFVCEESMHGELQVEEWKCMYAPKPKVMQTCNLFDCKPWIAMEWSQC
TVTTCGRGLRYRVVLCINHRGEHVGGCNPQLKLHIKEECVPIPCYKPEKSPVEAKLPWLKQAQLEETR
IATEEPTFIPPEWSACSTTCGPGVQVREVKRVLTLFTQTETELPEEECEGPKLPTERPCLLEACDESPA
SRELDIPLPEDSETTYDWEYAGFTPCTATCLGGHQEAIIVCLHIQTQTVNDSLDCMVHRPPAMSQACNT
EPCPPRWHVGSWGPCSATCGVGIQTRDYLHPGETPAPPEECRDEKPHALQACNQFDCPPGWHIEEWQQ
CSRTCAGGTQNRVTCRQLLTDGSFLNLSDELQCGPKASSHKSCARTDCPPHLAVGDWSKCSVSCGVGIQ
RRKQVCQRLAAKRRRIPLSEMMCRDLPGLPLVRSCQMPCEKSKIKSEMKTCLGEQGPQILSVQRVYIQTRE
EKRLNLTIGSRAYLLPNTSVIIKCPVRRFQKSLIQWEKDGRLQNSKRLGITKSGSLKIHLAAPDIGVY
RCIAGSAQETVVLKLIQTDNRLIARPALREPMREYPGMDHSEANSLGVTWHKMRQMWNNKNDLYLDDDDHI
SNQPFLLRALLGHCSNSAGSTNSWELKNKQFEAAVKQGAYSMQTAQFDELIRNMSQLMETGEVSDDLASQL
IYQLVAELAKAQPTHMQRGIEETPPAAQLRGETGSVQSSSHAKNSGKLTFFKPKGPVLMRQSQPPSISF
NKTINSRIGNTVYITKRTEVINILCDLITPSEATYTWTGDGTLQPSVKIILDGTGKIQIQNPTRKEQGI
YECVANHLGSDVESSSVLYAEAPVILSVERNITKPEHNHLSVVVGGIVEAALGANVTIRCPVKGPQPN
ITWLKRGGSLSGNVSLFNLSLLQNVSLNEGYVCIATNALGKAVATSVLHLLERRWPESRIVFLQGH
KKYILQATNTRTNSNDPTGEPPEPFWEFPGNWSHCATCGHLGARIQRPQVMANGQEVSEALCDHLQK
PLAGFEPENIRDCPARWFTSVWSQCSVSCGEGYHSRQVTCRRTKANGTVQVVSFRACAPKDRPLGRKPCF
GHPCVQWEPGNRCPGRCMGRAVRMQQRHTACQHNSSDSNCDRKRPTLRNCTSGACDVCWHTGPWKPCF
AACGRGFQSRKVDICIHTRSCPKVAKRHCVQKKKPIISWRHCLGPSCDRDCTDTTHYCMFVKHLNLCSLDRY
KQRCCQSCQEG

TRTRPLEQKLISEEDLAANDILDYKDDDDKV

Restriction Sites:

Sgfl-MluI

Cloning Scheme:


ACCN: NM_207517

ORF Size: 5073 bp

OTI Disclaimer: The molecular sequence of this clone aligns with the gene accession number as a point of reference only. However, individual transcript sequences of the same gene can differ through naturally occurring variations (e.g. polymorphisms), each with its own valid existence. This clone is substantially in agreement with the reference, but a complete review of all prevailing variants is recommended prior to use. [More info](#)

OTI Annotation: This clone was engineered to express the complete ORF with an expression tag. Expression varies depending on the nature of the gene.

Components: The ORF clone is ion-exchange column purified and shipped in a 2D barcoded Matrix tube containing 10ug of transfection-ready, dried plasmid DNA (reconstitute with 100 ul of water).

- Reconstitution Method:**
1. Centrifuge at 5,000xg for 5min.
 2. Carefully open the tube and add 100ul of sterile water to dissolve the DNA.
 3. Close the tube and incubate for 10 minutes at room temperature.
 4. Briefly vortex the tube and then do a quick spin (less than 5000xg) to concentrate the liquid at the bottom.
 5. Store the suspended plasmid at -20°C. The DNA is stable for at least one year from date of shipping when stored at -20°C.

RefSeq: [NM_207517.1](#), [NP_997400.1](#)

RefSeq Size: 7333 bp

RefSeq ORF: 5076 bp

Locus ID: 57188

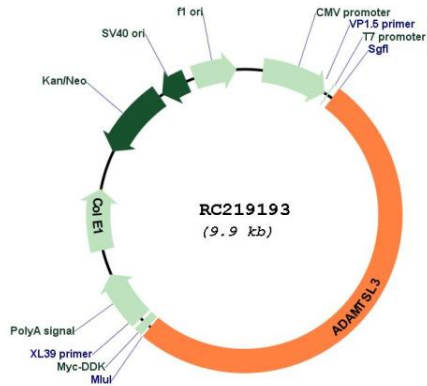
UniProt ID: [P82987](#)

Cytogenetics: 15q25.2

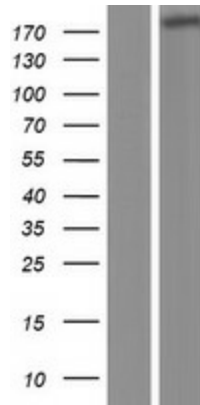
Protein Families: Secreted Protein

MW: 185.7 kDa

Product images:



Circular map for RC219193



Western blot validation of overexpression lysate (Cat# [LY403917]) using anti-DDK antibody (Cat# [TA50011-100]). Left: Cell lysates from untransfected HEK293T cells; Right: Cell lysates from HEK293T cells transfected with RC219193 using transfection reagent MegaTran 2.0 (Cat# [TT210002]).