

## Product datasheet for **RC219184**

### NR2C2 (NM\_003298) Human Tagged ORF Clone

#### Product data:

Product Type:	Expression Plasmids
Product Name:	NR2C2 (NM_003298) Human Tagged ORF Clone
Tag:	Myc-DDK
Symbol:	NR2C2
Synonyms:	TAK1; TR4
Mammalian Cell Selection:	Neomycin
Vector:	pCMV6-Entry (PS100001)
E. coli Selection:	Kanamycin (25 ug/mL)



[View online »](#)

**ORF Nucleotide Sequence:**

>RC219184 representing NM\_003298  
 Red=Cloning site Blue=ORF Green=Tags(s)

TTTTGTAATACGACTCACTATAGGGCGGCCGGGAATTCGTCGACTGGATCCGGTACCGAGGAGATCTGCC  
 GCC**CGGATCGCC**

ATGACCAGCCCCTCCCCACGCATCCAGATAATCTCCACCGACTCTGCTGTAGCCTCACCTCAGCGCATT  
 AGGGCTCTGAACCTGCCTCTGGCCATTGAGTGTTCACATCTTTGAACAAAGAGAAGATTGTCACAGA  
 CCAGCAGACAGGACAGAAAATCCAGATAGTCACCGCAGTGGACGCCTCCGGATCCCCAAACAGCAGTTC  
 ATCCTGACCAGCCAGATGGAGCTGGAAGTGGGAAAGGTGATCCTGGCTTCCCCAGAGACATCCAGCGCCA  
 AGCAACTCATATCCACCCTCAGACAACCTCGTCCCTGGCAGGATCCAGATTGTCACGGATTCTGCCTC  
 TGTGGAGCGTTTACTGGGAAGACGGACGTCCAGCGGCCCCAGGTGGTAGAGTACTGTGTGGTCTGTGGC  
 GACAAAGCCTCCGGCCGCTACTATGGGGTGTGAGTGTGAAGGTTGCAAAGTTTCTTCAAAGGAGTG  
 TGAGGAAAAATTTGACCTACAGCTGCCGGAGCAACCAAGACTGCATCATATAAACATCACCGGAACCG  
 CTGTCAGTTTTGCCGGCTGAAAAATGCTTAGAGATGGGCATGAAAAATGGAATCTGTGCAGAGTGAACGG  
 AAGCCCTTCGATGTGCAACGGGAGAAAACCAAGCAATTGTGCTGCTTCAACTGAGAAAAATCTATATCCGGA  
 AAGACCTGAGAAGTCCCCTGATAGCTACTCCCACGTTTGTGGCAGACAAAGATGGAGCAAGACAAACAGG  
 TCTTCTTGATCCAGGGATGCTTGTGAACATCCAGCAGCCTTTGATACGTGAGGATGGTACAGTTCTCCTG  
 GCCACGGATTCTAAGGCTGAAACAAGCCAGGGAGCTCTGGGCACACTGGCAAATGTAGTGACCTCCCTTG  
 CCAACCTAAGTGAATCTTTGAACAACGGTGACACTTCAGAAATCCAGCCAGAGGACCAGTCTGCAAGTGA  
 GATAACTCGGGCATTGTACCTTAGCTAAAGCACTTAATACCACAGACAGCTCCTCTTCTCAAGCTTG  
 GCAGATGGGATAGACACCAGTGGAGGAGGAGCATCCAGTTCATCAGCAGAGACCAGTGCACACCCATGCC  
 TTGAGGTTGAAGGCCCTCCTTTTCAGACACACAGTCAATTTAAGCTAACAAATGCCAGTCCAATGCC  
 AGAGTACCTCAACGTGCACTACATCTGTGAGTCTGCATCCCGTCTGCTTTTCTCTCAATGCACCTGGCT  
 CGGTCAATCCCAGCCTTTCAGGCACTTGGCAGGACTGCAACACCAGCCTTGTGCGGGCCTGCTGGAATG  
 AGCTCTTACCCTCGGCCTGGCCAGTGTGCCAGGTCATGAGTCTCTCCACCATCCTGGCTGCCATTGT  
 CAACCACCTGCAGAACAGCATCCAGGAAGATAAATTTCTGGTGACCGGATAAAGCAAGTATGGAGCAC  
 ATCTGGAAGTGCAGGAGTTCTGTAACAGCATGGCGAAGCTGGATATAGATGGCTATGAGTATGCATACC  
 TTAAGCTATAGTTCTTTAGCCCCGATCATCCAGGTTTGACCAGCACAAAGCCAGATTGAAAAATTTCCA  
 AGAAAAGGCACAGATGGAGTTCAGGACTATGTTCAAAAACTACTCAGAAGACACCTACCGATTGGCC  
 CGGATCCTCGTTGCCTGCCGGCACTCAGGCTGATGAGCTCCAACATAACAGAAGAACTTTTTTTTACTG  
 GTCTATTGGCAATGTTTCGATAGACAGCATAATCCCCTACATCTCAAGATGGAGACAGCAGAGTATAA  
 TGCCAGATCACCGGAGCCAGTCA

**ACGCGT**ACGCGGCCGCTCGAGCAGAACTCATCTCAGAAGAGGATCTGGCAGCAAATGATATCCTGGATT  
 ACAAGGATGACGACGATAAGGTTTAA

**Protein Sequence:**

>RC219184 representing NM\_003298  
 Red=Cloning site Green=Tags(s)

MTSPSPRIQIISTDSAVASPRIQGSEPASGLSVFTSLNKEKIVTDQQTGQKIQIVTAVDASGSPKQQF  
 ILTSPDGAGTGKIVILASPETSSAKQLIFTTSDNLVPGRIQIVTDSASVERLLGKTDVQRPQVVEYCVVCG  
 DKASGRHYGAVSCEGCKGFFKRSVRKNLTYSRNSQDCIINKHHRNRCQFCRLKCKLEMGMKMSVQSER  
 KPFDVQREKPSNCAASTEKIYIRKDLRSPLIATPTFVADKDGARQTGLLDPGMLVNIQQPLIREDTVLL  
 ATDSKAETSQALGTLANVVTSLANLSESLNNGDTSEIQPEDQSASEITRAFDTLAKALNTDSSSSPSL  
 ADGIDTSGGGSIHVISRQSTPIIEVEGPLLSDTHVTFKLTMPSPMPEYLVNHYICESASRLLFLSMHWA  
 RSIPAFQALGQDCNTSLVRACWNELFTLGLAQCAQVMSLSTILAAIVNHLQNSIQEDKLSGDRIKQVMEH  
 IWKLQEFNSMAKLDIDGYEYAYLKAIVLFSPPHPGLTSTSQIEKFQEKAMQLQDYVQKTYSEDYRLA  
 RILVRLPALRLMSSNITEELFFTGIGNVSIDSIIPIYILKMETAEYNGQITGASL

**TR**TRPLEQKLISEEDLAANDILDYKDDDDKV

Chromatograms: [https://cdn.origene.com/chromatograms/mk6205\\_g03.zip](https://cdn.origene.com/chromatograms/mk6205_g03.zip)

Restriction Sites: SgfI-MluI

Cloning Scheme:



ACCN: NM\_003298

ORF Size: 1845 bp

OTI Disclaimer: The molecular sequence of this clone aligns with the gene accession number as a point of reference only. However, individual transcript sequences of the same gene can differ through naturally occurring variations (e.g. polymorphisms), each with its own valid existence. This clone is substantially in agreement with the reference, but a complete review of all prevailing variants is recommended prior to use. [More info](#)

OTI Annotation: This clone was engineered to express the complete ORF with an expression tag. Expression varies depending on the nature of the gene.

Components: The ORF clone is ion-exchange column purified and shipped in a 2D barcoded Matrix tube containing 10ug of transfection-ready, dried plasmid DNA (reconstitute with 100 ul of water).

- Reconstitution Method:
1. Centrifuge at 5,000xg for 5min.
  2. Carefully open the tube and add 100ul of sterile water to dissolve the DNA.
  3. Close the tube and incubate for 10 minutes at room temperature.
  4. Briefly vortex the tube and then do a quick spin (less than 5000xg) to concentrate the liquid at the bottom.
  5. Store the suspended plasmid at -20°C. The DNA is stable for at least one year from date of shipping when stored at -20°C.

RefSeq: [NM\\_003298.5](#)

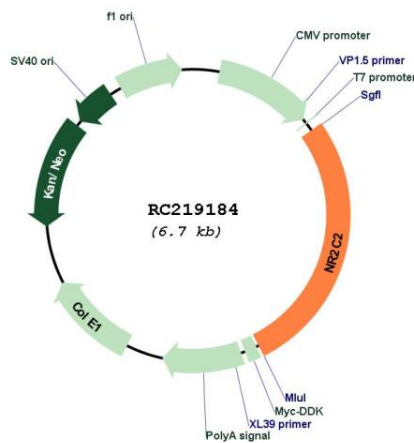
RefSeq Size: 2416 bp

RefSeq ORF: 1848 bp

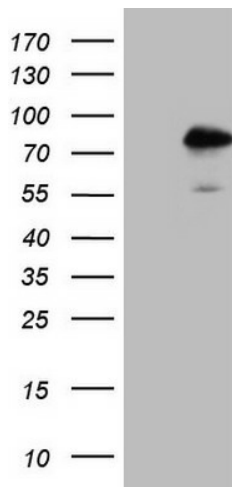
**Locus ID:** 7182  
**UniProt ID:** [P49116](#)  
**Cytogenetics:** 3p25.1  
**Domains:** HOLI, zf-C4  
**Protein Families:** Druggable Genome, Nuclear Hormone Receptor, Transcription Factors  
**MW:** 67.2 kDa

**Gene Summary:** This gene encodes a protein that belongs to the nuclear hormone receptor family. Members of this family act as ligand-activated transcription factors and function in many biological processes such as development, cellular differentiation and homeostasis. The activated receptor/ligand complex is translocated to the nucleus where it binds to hormone response elements of target genes. The protein encoded by this gene plays a role in protecting cells from oxidative stress and damage induced by ionizing radiation. The lack of a similar gene in mouse results in growth retardation, severe spinal curvature, subfertility, premature aging, and prostatic intraepithelial neoplasia (PIN) development. Alternative splicing results in multiple transcript variants encoding different isoforms. [provided by RefSeq, Apr 2014]

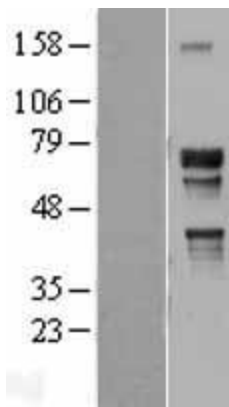
### Product images:



Circular map for RC219184



HEK293T cells were transfected with the pCMV6-ENTRY control (Cat# [PS100001], Left lane) or pCMV6-ENTRY NR2C2 (Cat# RC219184, Right lane) cDNA for 48 hrs and lysed. Equivalent amounts of cell lysates (5 ug per lane) were separated by SDS-PAGE and immunoblotted with anti-NR2C2 (Cat# [TA807275])(1:2000). Positive lysates [LY401137] (100ug) and [LC401137] (20ug) can be purchased separately from OriGene.



Western blot validation of overexpression lysate (Cat# [LY401137]) using anti-DDK antibody (Cat# [TA50011-100]). Left: Cell lysates from untransfected HEK293T cells; Right: Cell lysates from HEK293T cells transfected with RC219184 using transfection reagent MegaTran 2.0 (Cat# [TT210002]).



Coomassie blue staining of purified NR2C2 protein (Cat# [TP319184]). The protein was produced from HEK293T cells transfected with NR2C2 cDNA clone (Cat# RC219184) using MegaTran 2.0 (Cat# [TT210002]).