

Product datasheet for **RC219183**

PAG (PAG1) (NM_018440) Human Tagged ORF Clone

Product data:

Product Type:	Expression Plasmids
Product Name:	PAG (PAG1) (NM_018440) Human Tagged ORF Clone
Tag:	Myc-DDK
Symbol:	PAG
Synonyms:	CBP; PAG
Mammalian Cell Selection:	Neomycin
Vector:	pCMV6-Entry (PS100001)
E. coli Selection:	Kanamycin (25 ug/mL)



[View online »](#)

ORF Nucleotide Sequence:

>RC219183 representing NM_018440
 Red=Cloning site Blue=ORF Green=Tags(s)

TTTTGTAATACGACTCACTATAGGGCGGCCGGAATTCGTCGACTGGATCCGGTACCGAGGAGATCTGCC
 GCC**GCGATCGCC**

ATGGGGCCCGCGGGAGCCTGCTGGGCAGCGGACAGATGCAGATCACCTGTGGGAAGTCTGGCCGCTG
 TCGCCATTTTCTCGTCATCACCTTCTCATCTCCTGTGCTCTAGTTGTGACAGGGAAAAGAAGCCGCG
 ACAGCATAGTGGGACCATGAGAACCTGATGAACGTGCCTTCAGACAAGGAGATGTTAGCCGTTAGTT
 ACTAGCCTGGCAACAGATGCTCCTGCCAGCAGTGAAGCAGAAATGGGGCACTACCAATGGGACATCTTT
 CAGAGGACAGTACTCTGACCTGCATGCAGCATTACGAGGAAGTCCAGACATCGGCCTCGGATCTGCTGGA
 TTCCAGGACAGCACAGGAAACAAAATGTCATCAGAGTCGGGAGTGGCCAGAATCCCTCCGAGAGC
 GCAGTGGATACCATGCTCAGGCGAGAAGTGTGGACGGGGACCAGGGGCTGGGGATGGAAGGGCCCTATG
 AAGTGCTCAAGGACAGCTCCTCCAAGAAAACATGGTGGAGGACTGCTTGTATGAAACTGTAAAGAGAT
 CAAGGAGTGGCTGCAGCTGCACACCTGGAGAAAGGCCACAGTGGCAAGGCAAAATCTACTTCTGCCTCG
 AAAGAGCTCCAGGGCCCAAGACTGAAGGCAAAGCTGAGTTTGCTGAATATGCCTCGGTGGACAGAAACA
 AAAAATGTCGTCAAAGTGTAAATGTAGAGAGTATCCTTGAAATTCATGTGATCCAGAAGAGGAGGCCCC
 ACCACCTGTCCCTGTTAAGCTTCTGGACGAGAATGAAAACCTTCAGGAGAAGGAAGGGGAGAGGCGGAA
 GAGAGTGGCACAGACAGCAGCAGTGAACCTAACAAGAGATTTAGCTCATTGTGCATACAAGTCTCGGGAAG
 AAGACCCACTCTCACAGAAGAAGAGATCTCAGCTATGTACTCATCAGTAAATAAACCTGGACAGTTAGT
 GAATAAATCGGGCAGTCGTTACAGTTCGGAGTCCACCTACACCTCCATTCAAGGGGACCCACAGAGG
 TCACCCCTCCTGTAATGATCTCTATGCTACTGTTAAAGACTTCGAAAAAATCCAAACAGCAGCACTTC
 CACCAGCAGGGAGGCCAGCGAGGAGCCAGAGCTGATTATGAAGCGATACAGACTCTCAACAGAGAGGA
 AGAAAAGGCCACCCTGGGGACCAATGGCCACCAGGTCTCGTCCCAAGGAGAACGACTACGAGAGCATA
 AGTGACTTGCAGCAAGGCAGAGATATTACCAGGCTC

ACGCGTACGCGGCCGCTCGAGCAGAAACTCATCTCAGAAGAGGATCTGGCAGCAATGATATCCTGGATT
 ACAAGGATGACGACGATAAGGTTTAA

Protein Sequence:

>RC219183 representing NM_018440
 Red=Cloning site Green=Tags(s)

MGPAGSLGSGQMQITLWGLAAVAIFFVITFLIFLCSSCDREKKPRQHS GDHENLMNVPSDKEMFSRSV
 TSLATDAPASSEQNGAL TNGDIL SEDSTLTCMQHYEEVQTSASDLLDSQDSTGKPKCHQSRELPRIPPE
 AVDTML TARSVDGDQGLGMEGPYEVK DSSSQENMVEDCLYETVKEIKEVAAAHALEKGHSGKAKSTSAS
 KELPGPQTEGKA EFAEYASVDRNKKCRQSVNVE SILGNSCDPEEEAPPPVPVKLLDENENLQEKEGGAE
 ESATDTTSETNKR FSSLSYKSREEDPTL TEEIISAMYSSV NKPQQLVNKSGQSLTVPESTYTSIQGDPQR
 SPSSCN DL YATVKDFE KTPNSTLPPAGRPSEEPDYEA IQTLNREEEKATLGTNGHHGLVPKENDYESI
 SDLQQGRDITRL

TRTRPLEQKLISEEDLAANDILDYKDDDDKV

Chromatograms:

https://cdn.origene.com/chromatograms/mk6105_g08.zip

Restriction Sites:

Sgfl-Mlul

Cloning Scheme:


ACCN: NM_018440

ORF Size: 1296 bp

OTI Disclaimer: The molecular sequence of this clone aligns with the gene accession number as a point of reference only. However, individual transcript sequences of the same gene can differ through naturally occurring variations (e.g. polymorphisms), each with its own valid existence. This clone is substantially in agreement with the reference, but a complete review of all prevailing variants is recommended prior to use. [More info](#)

OTI Annotation: This clone was engineered to express the complete ORF with an expression tag. Expression varies depending on the nature of the gene.

Components: The ORF clone is ion-exchange column purified and shipped in a 2D barcoded Matrix tube containing 10ug of transfection-ready, dried plasmid DNA (reconstitute with 100 ul of water).

Reconstitution Method:

1. Centrifuge at 5,000xg for 5min.
2. Carefully open the tube and add 100ul of sterile water to dissolve the DNA.
3. Close the tube and incubate for 10 minutes at room temperature.
4. Briefly vortex the tube and then do a quick spin (less than 5000xg) to concentrate the liquid at the bottom.
5. Store the suspended plasmid at -20°C. The DNA is stable for at least one year from date of shipping when stored at -20°C.

RefSeq: [NM_018440.4](#)

RefSeq Size: 10759 bp

RefSeq ORF: 1299 bp

Locus ID: 55824

UniProt ID: [Q9NWO8](#)

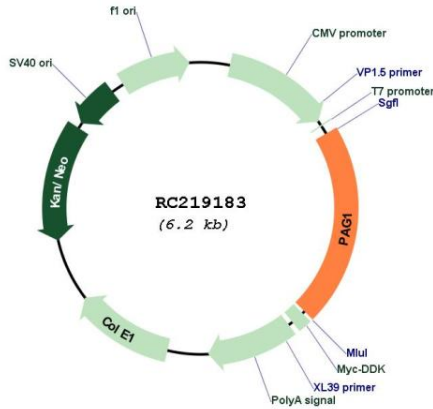
Cytogenetics: 8q21.13

Protein Families: Druggable Genome, Transmembrane

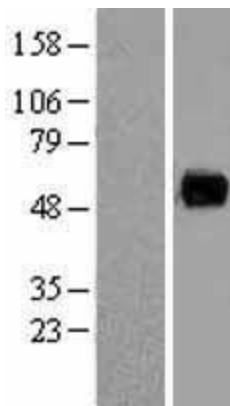
MW: 46.8 kDa

Gene Summary: The protein encoded by this gene is a type III transmembrane adaptor protein that binds to the tyrosine kinase csk protein. It is thought to be involved in the regulation of T cell activation. [provided by RefSeq, Jul 2008]

Product images:



Circular map for RC219183



Western blot validation of overexpression lysate (Cat# [LY402686]) using anti-DDK antibody (Cat# [TA50011-100]). Left: Cell lysates from untransfected HEK293T cells; Right: Cell lysates from HEK293T cells transfected with RC219183 using transfection reagent MegaTran 2.0 (Cat# [TT210002]).