

Product datasheet for **RC219182**

CSDE1 (NM_001007553) Human Tagged ORF Clone

Product data:

Product Type:	Expression Plasmids
Product Name:	CSDE1 (NM_001007553) Human Tagged ORF Clone
Tag:	Myc-DDK
Symbol:	CSDE1
Synonyms:	D1S155E; UNR
Mammalian Cell Selection:	Neomycin
Vector:	pCMV6-Entry (PS100001)
E. coli Selection:	Kanamycin (25 ug/mL)



[View online »](#)

ORF Nucleotide
Sequence:

>RC219182 representing NM_001007553
Red=Cloning site Blue=ORF Green=Tags(s)

TTTTGTAATACGACTCACTATAGGGCGGCCGGGAATTCGTCGACTGGATCCGGTACCGAGGAGATCTGCC
GCC**CGGATCGCC**

ATGAGCTTTGATCCAACCTTCTCCACAACAATGGACATAATGGGTACCCTAATGGTACTTCAGCAGCAC
TGGTGAAGTGGGGTTATTGAAAACTGTTAACTCTTACGGATTTATTCAGTGTTCAGAACGTCAAGC
TAGACTTTTCTTCCACTGTTACAGTATAATGGCAACCTGCAAGACTTAAAAGTAGGAGATGATGTTGAA
TTTGAAGTATCATCGGACCGACGGACTGGGAAACCCATTGCTGTTAACTGGTGAAGATAAAAAAAGAAA
TCCTCCCTGAAGAACGAATGAATGGACAAGTTGTGTGCGCTGTTCCCTCACAACCTAGAGAGTAAATCTCC
AGCTGCCCGGGTCAGAGTCCAACAGGGAGTGTATGCTACGAACGTAATGGGGAAGTGTGTTATCTGACT
TACACCCCTGAAGATGTCGAAGGGAACGTTAGCTGGAACTGGAGATAAAAATAAACTTTGTAATTGATA
ACAATAAACATACTGGTGTGTAAGTGTCTCGAACATTATGCTGTTGAAAAAGAAAACAGCCCGCTGCA
GGGAGTAGTTTGTCCATGAAGGAGGCATTTGGCTTTATTGAAAGAGGTGATGTTGTAAGAGATATTC
TTTCACTATAGTGAATTTAAGGGTGACTTAGAAACCTTACAGCCTGGCGATGATGTGGAATTCACAATCA
AGGACAGAAATGGTAAAGAAGTTGCAACAGATGTCAGACTATTGCCTCAAGGAACAGTCATTTTTGAAGA
TATCAGCATTGAACATTTTGAAGGAAGTGAACCAAAGTTATCCCAAAGTACCCAGTAAAAACCAGAAT
GACCCATTGCCAGGACGCATCAAAGTTGACTTTGTGATCCCTAAGAAGTCCCTTTGGAGACAAAGATA
CGAAATCCAAGGTGACCTGTGGAAGGTGACCATGTTAGGTTTAAATTTCAACAGACCGACGTGACAA
ATTAGAGCGAGCAACCAATATAGAAGTTCTGTCAAATACATTTCAAGTCACTAATGAAGCCCGAGAAATG
GGTGTGATTGCTGCCATGAGAGATGGTTTTGGTTTCATCAAGTGTGTGGATCGTGATGTTGATGTTCT
TCCACTTCAGTGAATTTCTGGATGGGAACAGCTCCATATTGCAGATGAAGTAGAGTTTACTGTGGTTCC
TGATATGCTCTCTGCTCAAAGAAATCATGCTATTAGGATTAAGAACTTCCCAAGGGCACGGTTTCATTT
CATTCCCATTCAGATCACCGTTTTCTGGGCACGGTAGAAAAAGAAGCCACTTTTTCCAATCCTAAAACCA
CTAGCCCAATAAAGGCAAAGAGAAGGAGGCTGAGGATGGCATTATTGCTTATGATGACTGTGGGTGAA
ACTGACTATTGCTTTTCAAGCAAGGATGTGGAAGGATCTACTTCTCCTCAAATAGGAGATAAGGTTGAA
TTTAGTATTAGTGACAAACAGAGGCTGGACAGCAGGTTGCAACTTGTGTGCGACTTTTAGGTCGTAATT
CTAACTCCAAGAGGCTCTTGGGTATGTGGCAACTCTGAAGGATAATTTGGATTTATTGAAACAGCCAA
TCATGATAAAGAAATCTTTTCCATTACAGTGAGTTCTCTGGTGTGTTGATAGCCTGGAAGTGGGGGAC
ATGGTCGAGTATAGCTTGTCAAAGGCAAAGGCAACAAAGTCAGTGCAGAAAAAGTGAACAAAACACACT
CAGTGAATGGCATTACTGAGGAAGCTGATCCCACCATTTACTCTGGCAAAGTAATTCGCCCCCTGAGGAG
TGTTGATCCAACACAGACTGAGTACCAAGGAATGATTGAGATTGTGGAGGAGGGCGATGAAAGGTGAG
GTCTATCCATTTGGCATCGTTGGGATGGCCAACAAAGGGGATTGCCTGCAGAAAGGGGAGAGCGTCAAGT
TCCAATTTGTGTCTGGGCCAAAATGCACAACTATGGCTTACAACATCACACCCTGCGCAGGGCCAC
AGTGGAATGTGTGAAAGATCAGTTTGGCTTCATTAACATGAAGTAGGAGATAGCAAGAAGCTCTTTTTC
CATGTGAAAGAAGTTCAGGATGGCATTGAGCTACAGGCAGGAGATGAGGTGGAGTTCTCAGTGATTCTTA
ATCAGCGCACTGGCAAGTGCAGCGCCTGTAATGTTTGGCGAGTCTGTGAGGGCCCCAAGGCTGTTGCAGC
TCCTCGACCTGATCGGTTGGTCAATCGCTTGAAGAATATCACTCTGGATGATGCCAGTGCTCCTCGCCTA
ATGGTTCTTCGTACGCCAAGGGGACCAGATAACTCAATGGGTTTGGTGCAGAAAGAAAGATCCGTCAAG
CTGGTGTCAATTGAC

ACGCGTACGCGGCCGCTCGAGCAGAACTCATCTCAGAAGAGGATCTGGCAGCAAATGATATCCTGGATT
ACAAGGATGACGACGATAAGGTTTAA

Protein Sequence:

>RC219182 representing NM_001007553
 Red=Cloning site Green=Tags(s)

```
MSFDPNLLHNNHNGYPNGTSAALRETGVIEKLLTSYGF IQCSERQARLFFHCSQYNGNLQDLKVGDDVE
FEVSSDRRTGKPIAVKLVKIKQEILPEERMNGQVVCAPHNLESKSPAAPGQSPTGVCYERNGEVFLYLT
YTPEDVEGNVQLETGDKINFVIDNNKHTGAVSARNIMLLKKKQARCQGVV CAMKEAFGFIERGDVVKEIF
FHYSFEKGDLETLQPGDDVEFTIKDRNGKEVATDVRLLPQGT VIFEDISIEHFEGTVTKVIPKVP SKNQN
DPLPGRIKVDVFI PKELPFGDKDTKSKVTLL EGDHVRFNISTDRRDKLERATNIEVLSNTFQFTNEAREM
GVIAAMRDGFGFIKCVDRDVRMFFHFSEILDGNQLHIADEVEFTVVPDMLSAQRNHAIKIKL PKGTVSF
HSHSDHRFLGTVEKEATFSNPKTTSPNKGKEKEAEDGIIAYDDCGVKLTIAFQAKDVEGSTSPQIGDKVE
FSISDKQRPGQVATCVRLGRNSNSKRLLGYVATLKDNFGFIETANHDKIEFFHYSEFSGDVSLELGD
MVEYSLSKGKGNKVS AEKVNKTHSVNGITEEADPTIYSGKVIRPLRSVDPTQTEYQGMIEIVEEGDMKGE
VYVFGIVGMANKGDCLQKGESVKFQLCVLQNAQT MAYNITPLRRATVECVKQDQGF INYEVGDSKCLFF
HVKEVQDGI ELQAGDEVEFSVILNQRTGKCSACNVWRVCEGPKAVAAPRPDRLVNRLKNITLDDASAPRL
MVL RQPRGPDNSMGFGAERKIRQAGVID
```

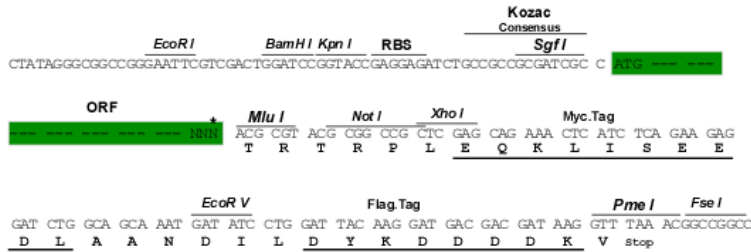
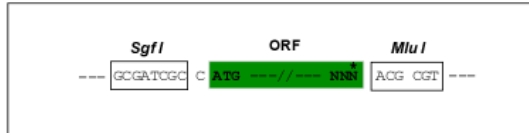
TRTRPLEQKLI SEEDLAANDILDYKDDDDKV

Restriction Sites:

Sgfl-MluI

Cloning Scheme:

Cloning sites used for ORF Shutting:



* The last codon before the Stop codon of the ORF

ACCN: NM_001007553

ORF Size: 2394 bp

OTI Disclaimer: The molecular sequence of this clone aligns with the gene accession number as a point of reference only. However, individual transcript sequences of the same gene can differ through naturally occurring variations (e.g. polymorphisms), each with its own valid existence. This clone is substantially in agreement with the reference, but a complete review of all prevailing variants is recommended prior to use. [More info](#)
OTI Annotation: This clone was engineered to express the complete ORF with an expression tag. Expression varies depending on the nature of the gene.

Components: The ORF clone is ion-exchange column purified and shipped in a 2D barcoded Matrix tube containing 10ug of transfection-ready, dried plasmid DNA (reconstitute with 100 ul of water).

Reconstitution Method:

1. Centrifuge at 5,000xg for 5min.
2. Carefully open the tube and add 100ul of sterile water to dissolve the DNA.
3. Close the tube and incubate for 10 minutes at room temperature.
4. Briefly vortex the tube and then do a quick spin (less than 5000xg) to concentrate the liquid at the bottom.
5. Store the suspended plasmid at -20°C. The DNA is stable for at least one year from date of shipping when stored at -20°C.

RefSeq: [NM_001007553.3](#)

RefSeq Size: 4183 bp

RefSeq ORF: 2397 bp

Locus ID: 7812

UniProt ID: [O75534](#)

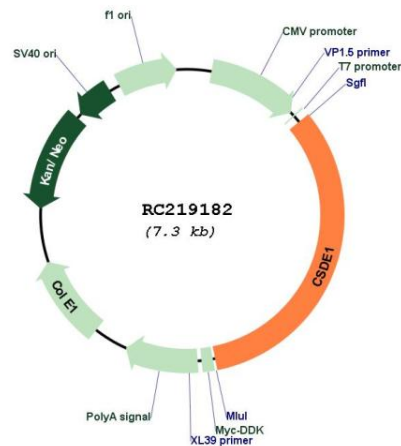
Cytogenetics: 1p13.2

Protein Families: Transcription Factors

MW: 88.9 kDa

Gene Summary: RNA-binding protein. Required for internal initiation of translation of human rhinovirus RNA. May be involved in translationally coupled mRNA turnover. Implicated with other RNA-binding proteins in the cytoplasmic deadenylation/translational and decay interplay of the FOS mRNA mediated by the major coding-region determinant of instability (mCRD) domain. [UniProtKB/Swiss-Prot Function]

Product images:



Circular map for RC219182