

Product datasheet for RC219172

PDGFC (NM_016205) Human Tagged ORF Clone

Product data:

Product Type: Expression Plasmids
Product Name: PDGFC (NM_016205) Human Tagged ORF Clone
Tag: Myc-DDK
Symbol: PDGFC
Synonyms: FALLOTEIN; SCDGF
Mammalian Cell Selection: Neomycin
Vector: pCMV6-Entry (PS100001)
E. coli Selection: Kanamycin (25 ug/mL)
ORF Nucleotide Sequence: >RC219172 representing NM_016205
Red=Cloning site Blue=ORF Green=Tags(s)

TTTTGTAATACGACTCACTATAGGGCGGCCGGAATTCGTCGACTGGATCCGGTACCGAGGAGATCTGCC
GCC**CGATCGCC**

ATGAGCCTCTTCGGGCTTCTCCTGCTGACATCTGCCCTGGCCGGCCAGAGACAGGGGACTCAGGCGGAAT
CCAACCTGAGTAGTAAATCCAGTTTTCCAGCAACAAGGAACAGAACGGAGTACAAGATCCTCAGCATGA
GAGAATTACTGTGTCTACTAATGGAAGTATCACAGCCCAAGGTTTCTCATACTTATCCAAGAAAT
ACGGTCTTGGTATGGAGATTAGTAGCAGTAGAGGAAAAATGTATGGATACAACCTACGTTTGTGAAAGAT
TTGGGCTTGAAGACCCAGAAGATGACATATGCAAGTATGATTTTGTAGAAGTTGAGGAACCCAGTGATGG
AACTATATTAGGGCGCTGGTGTGTTCTGGTACTGTACCAGGAAAACAGATTTCTAAAGGAAATCAAATT
AGGATAAGATTTGTATCTGATGAATATTTTCTTCTGAACCAGGGTTCTGCATCCACTACAACATTTGCA
TGCCACAATTCACAGAAGCTGTGAGTCCTTCAGTGCTACCCCTTCAGCTTTGCCACTGGACCTGCTTAA
TAATGCTATAACTGCCTTTAGTACCTTGAAGACCTTATTCGATATCTTGAACCAGAGAGATGGCAGTTG
GACTTAGAAGATCTATATAGGCCAAGCTTGGCAACTTCTTGGCAAGGCTTTTGTGTTTGAAGAAAATCCA
GAGTGGTGGATCTGAACCTTCTAACAGAGGAGGTAAGATTATACAGCTGCACACCTCGTAACTTCTCAGT
GTCCATAAGGGAAGAATAAAGAGAACCAGTACCATTTTCTGGCCAGGTTGTCTCCTGGTTAAACGCTGT
GGTGGAACTGTGCTTGTCTCCACAATTGCAATGAATGTCAATGTGTCCCAAGCAAAGTTACTAAAA
AATACCACGAGGTCCTTCAAGTTGAGACCAAGACCGGTGTGAGGGGATTGCACAAATCACTACCCGACGT
GGCCCTGGAGCACCATGAGGAGTGTGACTGTGTGTGCAGAGGGAGCACAGGAGGA

ACGCGTACGCGGCCGCTCGAGCAGAACTCATCTCAGAAGAGGATCTGGCAGCAAATGATATCCTGGATT
ACAAGGATGACGACGATAAGGTTTAA



Protein Sequence: >RC219172 representing NM_016205
 Red=Cloning site Green=Tags(s)

MSLFGLLLLSALAGQRQGTQAESNLSSKFQFSSNKEQNGVQDPQHERIITVSTNGSIHSPRFPHTYPRN
 TVLVWRLVAVEENVWIQLTFDERFGLDPEDDICKYDFVEVEEPSDGTILGRWCGSGTVPKGQISKGNQI
 RIRFVSDEYFPSEPGFCIHYNIVMPQFTEAVSPSVLPPSALPLDLLNNAITAFSTLEDLIRYLEPERWQL
 DLEDLYRPTWQLLGKAFVFGGRKSRVVDLNLLEEVRLYSCTPRNFSVSIREELKRTDTIFWPGCLLVKRC
 GGNACCLHNCNECQCVP SKVTKKYHEVLQLRPKTGVRGLHKSLTDVALEHHEECDCVCRGSTGG

TRTRPLEQKLISEEDLAANDILDYKDDDDKV

Chromatograms: https://cdn.origene.com/chromatograms/ja1558_e05.zip

Restriction Sites: SgfI-MluI

Cloning Scheme:

Cloning sites used for ORF Shuttling:



* The last codon before the Stop codon of the ORF

ACCN: NM_016205

ORF Size: 1035 bp

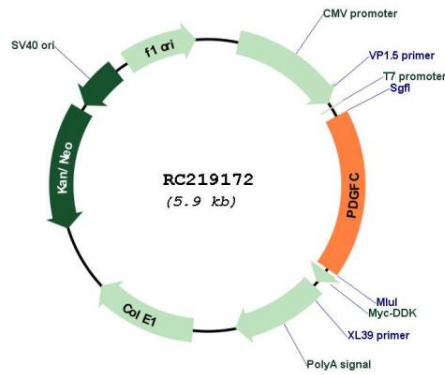
OTI Disclaimer: The molecular sequence of this clone aligns with the gene accession number as a point of reference only. However, individual transcript sequences of the same gene can differ through naturally occurring variations (e.g. polymorphisms), each with its own valid existence. This clone is substantially in agreement with the reference, but a complete review of all prevailing variants is recommended prior to use. [More info](#)

OTI Annotation: This clone was engineered to express the complete ORF with an expression tag. Expression varies depending on the nature of the gene.

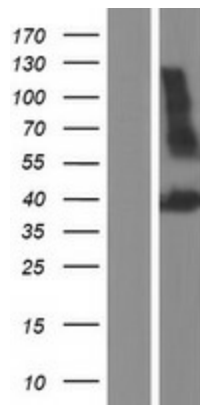
Components: The ORF clone is ion-exchange column purified and shipped in a 2D barcoded Matrix tube containing 10ug of transfection-ready, dried plasmid DNA (reconstitute with 100 ul of water).

Reconstitution Method:	<ol style="list-style-type: none">1. Centrifuge at 5,000xg for 5min.2. Carefully open the tube and add 100ul of sterile water to dissolve the DNA.3. Close the tube and incubate for 10 minutes at room temperature.4. Briefly vortex the tube and then do a quick spin (less than 5000xg) to concentrate the liquid at the bottom.5. Store the suspended plasmid at -20°C. The DNA is stable for at least one year from date of shipping when stored at -20°C.
RefSeq:	NM_016205.3
RefSeq Size:	3007 bp
RefSeq ORF:	1038 bp
Locus ID:	56034
UniProt ID:	Q9NRA1
Cytogenetics:	4q32.1
Domains:	PDGF, CUB
Protein Families:	Adult stem cells, Druggable Genome, Embryonic stem cells, ES Cell Differentiation/IPS, Induced pluripotent stem cells
Protein Pathways:	Cytokine-cytokine receptor interaction, Focal adhesion, Gap junction, Melanoma, Prostate cancer, Regulation of actin cytoskeleton
MW:	39.03 kDa
Gene Summary:	The protein encoded by this gene is a member of the platelet-derived growth factor family. The four members of this family are mitogenic factors for cells of mesenchymal origin and are characterized by a core motif of eight cysteines. This gene product appears to form only homodimers. It differs from the platelet-derived growth factor alpha and beta polypeptides in having an unusual N-terminal domain, the CUB domain. Alternatively spliced transcript variants have been found for this gene. [provided by RefSeq, Sep 2010]

Product images:



Circular map for RC219172



Western blot validation of overexpression lysate (Cat# [LY414119]) using anti-DDK antibody (Cat# [TA50011-100]). Left: Cell lysates from untransfected HEK293T cells; Right: Cell lysates from HEK293T cells transfected with RC219172 using transfection reagent MegaTran 2.0 (Cat# [TT210002]).