

Product datasheet for RC219147

RASGRF1 (NM_002891) Human Tagged ORF Clone

Product data:

Product Type:	Expression Plasmids
Product Name:	RASGRF1 (NM_002891) Human Tagged ORF Clone
Tag:	Myc-DDK
Symbol:	RASGRF1
Synonyms:	CDC25; CDC25L; GNRP; GRF1; GRF55; H-GRF55; PP13187; ras-GRF1
Mammalian Cell Selection:	Neomycin
Vector:	pCMV6-Entry (PS100001)
E. coli Selection:	Kanamycin (25 ug/mL)
ORF Nucleotide Sequence:	>RC219147 representing NM_002891 Red=Cloning site Blue=ORF Green=Tags(s)

TTTTGTAATACGACTCACTATAGGGCGGCCGGAATTCGTCGACTGGATCCGGTACCGAGGAGATCTGCC
GCC**CGATCGCC**

ATGCAGAAGGGGATCCGGCTGAATGATGGCCACGTCGCGTCCCTGGGACTGCTGGCGCGCAAGGACGGCA
CGCGCAAAGGCTACCTGAGCAAGCGGAGTTCGGACAACACAAAATGGCAAACCAAGTGGTTCGCGCTGCT
GCAGAACCTGCTCTTCTACTTCGAGAGCGACTCGAGCTCGCGGCCCTCGGGGCTTACCTGCTGGAGGGC
TGCGTCTGCGACCGCGCCCTCCCCAAGCCGCGCTGTGGCCAAGGAGCCGCTGGAGAAACAGCATT
ACTTCACGGTGAACCTCAGCCATGAGAACCAGAAAGCCTTGGAGCTGAGGACAGAGGACGCAAAAGATTG
TGACGAATGGGTGGCAGCCATTGCACATGCCAGCTACAGGACCCTCGCCACAGAGCATGAGGCATTAATG
CAGAAATACCTGCACCTGCTGCAGATCGTGAGACAGAGAAGACCGTGGCCAAGCAGCTTCGGCAGCAGA
TCGAGGATGGGGAGATCGAGATCGAGCGGCTGAAGGCAGAGATCACATCCCTGCTCAAGGACAATGAGCG
CATCCAGTCCACCAGACTGTGCGCCCCAACGATGAAGACAGCGACATCAAGAAAATTAAGAAGGTGCGAG
AGCTTCTGCGGGGCTGGCTGTGCCGGCGGAAGTGAAGACCATCATCCAGGACTACATCCGGTCACCCC
ATGCTGACAGCATGCGCAAGAGGAACCAGGTGGTGTTCAGCATGCTGGAGGCTGAGGCTGAGTACGTGCA
GCAGCTGCACATCCTTGCAACAATTTCTGCGCCCGCTGCGGATGGCCGCCAGCTCCAAGAAGCCCTCCC
ATCACACGACGACGTGACGAGCATCTTCTGAACAGCGAAACCATCATGTTTTTACATCAGATCTTTT
ACCAAGGCTGAAGGCCGATCTCCAGCTGGCCACGCTGGTCCCTGGCTGACCTATTTGACATCCTGCT
GCCCATGCTCAACATCTACCAAGAGTTCGTCGCCAACCACAGTACAGCCTGCAGATCCTGGCCACTGC
AAGCAGAACCCTGACTTCGACAAGCTGTGAAGCACTACGAGGCCAAGCCTGACTGCGAGGAGAGGACGC
TGGAGACCTTCTCACCTACCCATGTTCCAGATCCCCAGGTACATCCTGACCCTCCATGAGCTCCTGGC
CCACACGCCTCATGAGCACGTTGAGCGCAACAGCCTGGACTACGCCAAGTCCAACTGGAGGAGCTGTCC
AGAATAATGCACGATGAAGTAAGTGAGACGGAACATCCGAAAAACCTGGCCATCGAGCGCATGATCA
TCGAAGGCTGTGAGATCCTCCTGGACACCAGCCAGACCTTTGTGAGACAAGGTTCCCTCATTGAGGTGCC
CATGTCTGAAAAGGCAAGATCACAGGGGGCGCTGGGGTCTCTCTCCCTAAAGAAAGAGGGCGAGCGCA



[View online >](#)

CAGTGCTTCTGTTTTCTAAGCATCTGATTATCTGTACCAGAGGCTCTGGAGGGAAGCTTCACTTGACCA
 AGAATGGAGTCATATCCCTCATTGACTGCACTTTATTGGAGGAGCCAGAAAGCACGGAGGAGGAAGCCAA
 AGGATCCGGCCAAGACATAGATCACTTGGATTTAAAAATCGGGGTGGAGCCAAAGGATCCCCGCCCTTT
 ACAGTCATCCTAGTGGCCTCGTCCAGACAGGAGAAGGCAGCGTGGACCAGTGACATCAGCCAGTGTGTGG
 ATAACATCCGATGCAATGGGCTCATGATGAACGCATTTGAAGAAAATCCAAGGTCACTGTGCCGAGAT
 GATCAAGAGGACCAGGGAGGGGACCAGGGAAGCAGAAAATGAGCAGGTCCGACGCCCTCTTATATTGTGAT
 GATGTTGACATTCGCTTCAGCAAAAACCATGAACCTCCTGCAAAGTGTCTGAGATCCGCTACGCCAGTGTGG
 AGCGGCTGCTGGAGAGGCTGACGGACCTGCGCTTCTTGAGCATCGACTTCTCAACACCTTCTGCACTC
 CTACCGCGTCTTACCACCGCCATCGTGGTCTGGACAAGCTATTACCATCTACAAGAAGCCTATCAGT
 GCCATTCTGCCAGTGGCTGAGGTGCTGGAGCTCCTGTTTGGCAGTGGCCAGAACAATAAGCTCCTGT
 ACGGTGAACCCCAAGTCCCCGCGGCCACCCGCAAGTTCTCCTCGCGCCACCTCTGTCCATCACCAA
 GACATCGTACCAGCCGCGCGGAAGCTCTCCCTGAACATCCCATCATCACTGGCGGAAGGCCCTG
 GACCTGGCGCCCTCAGTGAACCTCAATGGCTACACCAGCATGTACTCGGCCATGTCACCCTCAGCA
 AGGCCACGCTGGACACCAGCAAGCTCTATGTGTCAGCAGCTTACCAACAAGATTCCAGATGAGGGCGA
 TACGACCCTGAGAAGCCGAAGACCTTCAGCGCTCAGCAAGCAGAGCTCAGAAGTCTCCATGAGAGAG
 GAGTCAGATATTGATCAAAACCAGAGTGATGATGGTGATCTGAAACATACCAACTAAATCTCCAACAA
 CACCCAAATCAGTCAAAAACAAAATTCTTCAGAGTTCCTCACTCTTTTCTATAACAATGGAGTCGTCAT
 GACCTCCTGTCGTGAACTGGACAATAACCCGAGTGCTTGTGCGCCGCTCTGCCTTTGCCATAGCAACC
 GCCGGGGCCAACGAGGGCACCCAAACAAGGAGAAGTACCGGAGGATGTCCTTAGCCAGTGCAGGGTTTC
 CCCAGACCAGAGGAATGGAGACAAGGAGTTTGTGATCCGAGAGCAGCCACCAATCGTGTCTTGAACGT
 GCTCCGCCACTGGGTGTCCAAGCACTCTCAGGACTTTGAGACCAACGATGAGTCAAATGCAAGGTGATC
 GGCTTCTGGAAGAAGTCATGCACGACCCGGAGCTCTGACCCAGGAGCGGAAGGCTGCAGCCAACATCA
 TCAGGACTCTGACCCAGGAGGACCCAGGTGACAACCAGATCACGCTGGAGGAGATCACGAGATGGCTGA
 AGGCGTGAAGGCTGAGCCCTTTGAAAACCACTCAGCCCTGGAGATCGCGGAGCAGCTGACCCTGCTAGAT
 CACCTCGTCTTCAAGAAGATTCTTATGAGGAGTTCTTCGGACAAGGATGGATGAAACTGAAAAAAGATG
 AAAGGACCCCTTATATCATGAAAACCACTAAGCACTTCAATGACATCAGTAACTTGATTGCTTCAGAAAT
 CATCCGCAATGAGGACATCAACGCCAGGGTGGAGGCCATCGAGAAGTGGTGGCCGTAGCTGACATATGC
 CGCTGCCTCCACAATAAATGCCGTACTGGAGATCACCTCGTCCATGAACCGCAGTGAATCTTCCGGC
 TCAAAAAGACGTGGCTCAAAGTCTTAAGCAGACTAAAGCTTTGATTGATAAGCTCCAAAAGCTTGTGTC
 ATCTGAGGGCAGATTTAAGAATCTCAGAGAAGCTCTGAAAAATTGTGACCCACCCTGTGTCCTTACCTG
 GGGATGTACCTCACCGACCTGGCTTTCATCGAGGAGGGGACGCCAATTACACGGAAGACGGCCTGGTCA
 ACTTCTCCAAGATGAGGATGATATCCATATTATCCGAGAGATTGCGCAGTTTCAACAAACTGCCTACAA
 AATAGAGACCAAGCAAAGGTAACGCAATATTTACTGGACCAATCTTTTGTAAATGGATGAAGAAAGCCTC
 TACGAGTCTTCTCCGAATAGAACCAAAACTCCCCACC

ACGCGTACGCGGCCGCTCGAGCAGAACTCATCTCAGAAGAGGATCTGGCAGCAATGATATCCTGGATT
 ACAAGGATGACGACGATAAGGTTTAA

Protein Sequence: >RC219147 representing NM_002891
 Red=Cloning site Green=Tags(s)

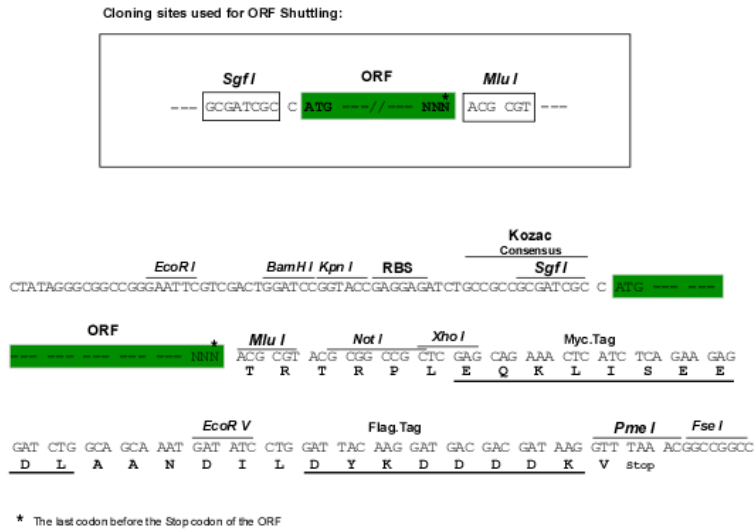
MQKGIRLNDGHVASLGLLARKDGRKGYLSKRSSDNTKWQTKWFALLQNLIFYFESDSSSRPSGLYLLEG
 CVCDRAPSPKALSAKEPLEKQHYFTVNF SHENQKALELRTEDAKDCDEWAAIAHASRYRLATEHEALM
 QKYLHLLQIVETEKTVAKQLRQQIEDGEIEIERLKAETSLKDNRIQSTQTVAPNDESDIKKIKKVQ
 SFLRGWLCRRKWKTI IQDYIRSPHADSMRKRNVVFSMLEAEAEYVQQLHILVNNFLRPLRMAASSKKPP
 ITHDDVSSIFLNSETIMFLHQIF YQGLKARISSWPTLVLADLFDILLPMLNIYQEFVRNHQYSLQILAHC
 KQNRDFDKLLKHYEAKPDCEERTLETFLTYPMFQIPRYILTLHELLAHTPHEHVERNSLDYAKSKLEELS
 RIMHDEVSETENIRKNLAIERMIIEGCEILLDTSQTFVRQGS LIQVPMSEKGITRGRGLSLKKEGER
 QCFLFSKHLIICTRGSGKHLTKNGVISLIDCTLLEPESTEEEA KSGGQDIDHLDFKIGVEPKDSPPF
 TVILVASSRQEKAAWTSDISQVDNIRCNGLMNAFEENSKVTVPMIKRTREGTREAEMSRSDASLYCD
 DVDIRFSKTMNSCKVLQIRYASVERLLERLTDLRFLSIDFLNTHSYRVFTTAIVVLDKLITIIYKPPIS
 AIPARWLRSELELLFASGQNNKLLYGEPPKSPRATRKFSSPPPLSITKTSSPSRRRKL SLNIPITIGKAL
 DLAALSCNSNGYTSMYSAMPFSKATLDTSKLYVSSSFTNKIPDEGDTTPEKPEDPSALSKQSSEVSMRE
 ESDIDQNSDDGDTETSPTKSPTPKSVKNKNSSEFPLFSYNNGVVMTSCRELDNRSALSAASFAIAT
 AGANEGTPNKEKYRRMSLASAGFPDQRNGDKEFVIRRAATNRVNLNRHWHVSKHSQDFETNDELCKKVI
 GFLEEVMDPELLTQERKAAANIIRTLTQEDPGDNQITLEEITQMAEGVKAEPFENHSALEIAEQLTLLD
 HLVFKKIPYEEFFGQGWMLKLNERTPYIMKTTKHFNDISNLIASEIIRNEDINARVSAIEKWAVADIC
 RCLHNYNAVLEITSSMNRSAIFRLKKTWLVKSKQTKALIDKLQKLVSEGRFKNLREALKNCDPPCVPYL
 GMYLTDLAFIEEGTPNYTEDGLVNF SKMRMISHIIREIRQFQQTAYKIEHQAKVTQYLLDQSFVMDSEESL
 YESSLRIEPKLPT

TRTRPLEQKLISEEDLAANDILDYKDDDDKV

Chromatograms: https://cdn.origene.com/chromatograms/mk8021_h04.zip

Restriction Sites: SgfI-MluI

Cloning Scheme:

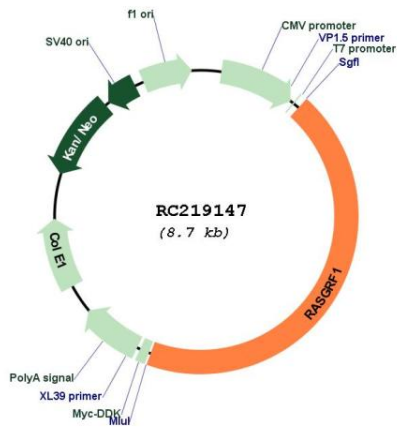


ACCN: NM_002891

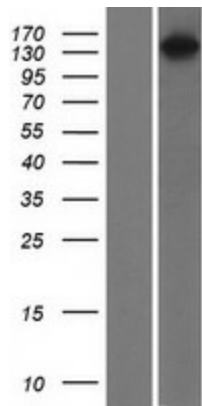
ORF Size: 3819 bp

OTI Disclaimer:	The molecular sequence of this clone aligns with the gene accession number as a point of reference only. However, individual transcript sequences of the same gene can differ through naturally occurring variations (e.g. polymorphisms), each with its own valid existence. This clone is substantially in agreement with the reference, but a complete review of all prevailing variants is recommended prior to use. More info
OTI Annotation:	This clone was engineered to express the complete ORF with an expression tag. Expression varies depending on the nature of the gene.
Components:	The ORF clone is ion-exchange column purified and shipped in a 2D barcoded Matrix tube containing 10ug of transfection-ready, dried plasmid DNA (reconstitute with 100 ul of water).
Reconstitution Method:	<ol style="list-style-type: none">1. Centrifuge at 5,000xg for 5min.2. Carefully open the tube and add 100ul of sterile water to dissolve the DNA.3. Close the tube and incubate for 10 minutes at room temperature.4. Briefly vortex the tube and then do a quick spin (less than 5000xg) to concentrate the liquid at the bottom.5. Store the suspended plasmid at -20°C. The DNA is stable for at least one year from date of shipping when stored at -20°C.
Note:	Plasmids are not sterile. For experiments where strict sterility is required, filtration with 0.22um filter is required.
RefSeq:	NM_002891.6
RefSeq Size:	4022 bp
RefSeq ORF:	3822 bp
Locus ID:	5923
UniProt ID:	Q13972
Cytogenetics:	15q25.1
Domains:	IQ, RhoGEF, RasGEFN, PH, RasGEF
Protein Families:	Druggable Genome
Protein Pathways:	Focal adhesion, MAPK signaling pathway
MW:	145.1 kDa
Gene Summary:	The protein encoded by this gene is a guanine nucleotide exchange factor (GEF) similar to the <i>Saccharomyces cerevisiae</i> CDC25 gene product. Functional analysis has demonstrated that this protein stimulates the dissociation of GDP from RAS protein. The studies of the similar gene in mouse suggested that the Ras-GEF activity of this protein in brain can be activated by Ca ²⁺ influx, muscarinic receptors, and G protein beta-gamma subunit. Mouse studies also indicated that the Ras-GEF signaling pathway mediated by this protein may be important for long-term memory. Alternatively spliced transcript variants encoding distinct isoforms have been reported. [provided by RefSeq, Mar 2009]

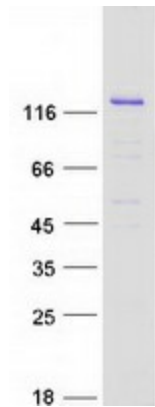
Product images:



Circular map for RC219147



Western blot validation of overexpression lysate (Cat# [LY419036]) using anti-DDK antibody (Cat# [TA50011-100]). Left: Cell lysates from untransfected HEK293T cells; Right: Cell lysates from HEK293T cells transfected with RC219147 using transfection reagent MegaTran 2.0 (Cat# [TT210002]).



Coomassie blue staining of purified RASGRF1 protein (Cat# [TP319147]). The protein was produced from HEK293T cells transfected with RASGRF1 cDNA clone (Cat# RC219147) using MegaTran 2.0 (Cat# [TT210002]).