

Product datasheet for **RC219145**

EDARADD (NM_145861) Human Tagged ORF Clone

Product data:

Product Type: Expression Plasmids
Product Name: EDARADD (NM_145861) Human Tagged ORF Clone
Tag: Myc-DDK
Symbol: EDARADD
Synonyms: ECTD11A; ECTD11B; ED3; EDA3
Mammalian Cell Selection: Neomycin
Vector: pCMV6-Entry (PS100001)
E. coli Selection: Kanamycin (25 ug/mL)
ORF Nucleotide Sequence: >RC219145 representing NM_145861
Red=Cloning site Blue=ORF Green=Tags(s)

TTTTGTAATACGACTCACTATAGGGCGGCCGGAATTCGTCGACTGGATCCGGTACCGAGGAGATCTGCC
GCC**CGATCGCC**

ATGGGCCTCAGGACGACTAAACAGATAGGGAGAGGCACTAAAGCTCCTGGTCACCAAGAGGATCATATGG
TAAAGGAACCAAGTGAAGACACAGACCCTAGCACTTTATCCTTTAATATGTCAGACAAATATCCCATTCA
AGATACGGAACCCCTAAAGCTGAAGAATGTGATACAATTACTTTGAACTGCCACGAAATTCAGATATG
AAAAATCAGGGAGAAGAAAATGGCTTTCCAGATAGCACTGGAGATCCTCTCCAGAGATCAGCAAGGACA
ACTCCTGCAAAGAAAACGTACTTGTCTCCTGCTTGTCCGGGCCCCACCATAAGTGACTTGCTCAA
TGATCAGGACTTACTAGACGTGATCAGGATAAAGCTGGATCCGTGTCACCAACGGTGAAAACTGGAGG
AATTTTGCAAGCAAATGGGGATGTCCTATGACGAATTGTGCTTCTGGAGCAGAGGCCACAGAGCCCCA
CCTTGGAGTTCTTGTCCGGAACAGTCAGAGGACGGTGGGCCAGCTGATGGAGCTCTGCAGGCTCTACCA
CAGGGCCGACGTGGAGAAGGTTCTGCGCAGGTGGTGGACGAGGAGTGCCCAAGCGGGAGCGTGGAGAC
CCCTCCAGGCACTTC

ACGCGTACGCGGCCGCTCGAGCAGAACTCATCTCAGAAGAGGATCTGGCAGCAAATGATATCCTGGATT
ACAAGGATGACGACGATAAGGTTTAA



[View online »](#)

Protein Sequence: >RC219145 representing NM_145861
Red=Cloning site Green=Tags(s)

MGLRRTTKQIGRGTKAPGHQEDHMVKEPVEDTDPSTLSFNMSDKYPIQDTELPKAEEDTITLNCPRNSDM
 KNQGEENGFPDSTGDPLPEISKDNSCKENCTCSSLLRAPTISDLLNDQDLLDVIRIKLDPCHPYVKNWR
 NFASKWMSYDELCFLEQRPQSPTLEFLLRNSQRTVGLMELCRLYHRADVEKVLRRWVDEEWPKRERGD
 PSRHF

TRTRPLEQKLISEEDLAANDILDYKDDDDKV

Chromatograms: https://cdn.origene.com/chromatograms/mk6048_e05.zip

Restriction Sites: SgfI-MluI

Cloning Scheme:



ACCN: NM_145861

ORF Size: 645 bp

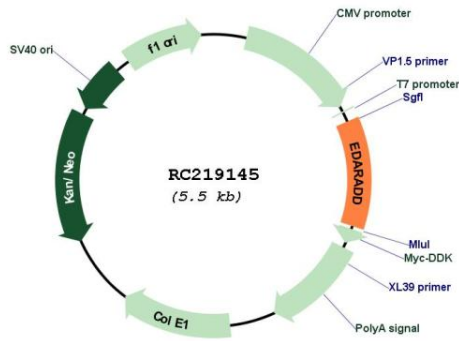
OTI Disclaimer: The molecular sequence of this clone aligns with the gene accession number as a point of reference only. However, individual transcript sequences of the same gene can differ through naturally occurring variations (e.g. polymorphisms), each with its own valid existence. This clone is substantially in agreement with the reference, but a complete review of all prevailing variants is recommended prior to use. [More info](#)

OTI Annotation: This clone was engineered to express the complete ORF with an expression tag. Expression varies depending on the nature of the gene.

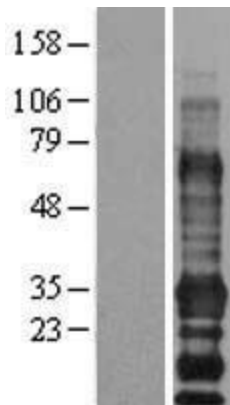
Components: The ORF clone is ion-exchange column purified and shipped in a 2D barcoded Matrix tube containing 10ug of transfection-ready, dried plasmid DNA (reconstitute with 100 ul of water).

Reconstitution Method:	<ol style="list-style-type: none">1. Centrifuge at 5,000xg for 5min.2. Carefully open the tube and add 100ul of sterile water to dissolve the DNA.3. Close the tube and incubate for 10 minutes at room temperature.4. Briefly vortex the tube and then do a quick spin (less than 5000xg) to concentrate the liquid at the bottom.5. Store the suspended plasmid at -20°C. The DNA is stable for at least one year from date of shipping when stored at -20°C.
RefSeq:	NM_145861.1 , NP_665860.1
RefSeq Size:	2772 bp
RefSeq ORF:	648 bp
Locus ID:	128178
UniProt ID:	Q8WWZ3
Cytogenetics:	1q42.3-q43
Domains:	enolase
Protein Families:	Druggable Genome
MW:	25.2 kDa
Gene Summary:	<p>This gene was identified by its association with ectodermal dysplasia, a genetic disorder characterized by defective development of hair, teeth, and eccrine sweat glands. The protein encoded by this gene is a death domain-containing protein, and is found to interact with EDAR, a death domain receptor known to be required for the development of hair, teeth and other ectodermal derivatives. This protein and EDAR are coexpressed in epithelial cells during the formation of hair follicles and teeth. Through its interaction with EDAR, this protein acts as an adaptor, and links the receptor to downstream signaling pathways. Two alternatively spliced transcript variants of this gene encoding distinct isoforms have been reported. [provided by RefSeq, Jul 2008]</p>

Product images:



Circular map for RC219145



Western blot validation of overexpression lysate (Cat# [LY403442]) using anti-DDK antibody (Cat# [TA50011-100]). Left: Cell lysates from untransfected HEK293T cells; Right: Cell lysates from HEK293T cells transfected with RC219145 using transfection reagent MegaTran 2.0 (Cat# [TT210002]).