

Product datasheet for **RC219138**

Epac1 (RAPGEF3) (NM_001098532) Human Tagged ORF Clone

Product data:

Product Type:	Expression Plasmids
Product Name:	Epac1 (RAPGEF3) (NM_001098532) Human Tagged ORF Clone
Tag:	Myc-DDK
Symbol:	Epac1
Synonyms:	bcm910; CAMP-GEFI; EPAC; EPAC1; HSU79275
Mammalian Cell Selection:	Neomycin
Vector:	pCMV6-Entry (PS100001)
E. coli Selection:	Kanamycin (25 ug/mL)



[View online »](#)

ORF Nucleotide Sequence:

>RC219138 representing NM_001098532
 Red=Cloning site Blue=ORF Green=Tags(s)

TTTTGTAATACGACTCACTATAGGGCGGCCGGAATTCGTCGACTGGATCCGGTACCGAGGAGATCTGCC
 GCC**GCGATCGCC**

ATGGTGTGAGAAGGATGCACCGCCCCGAAGCTGCTCCTACCAGCTGCTGCTGGAGACCAGCGTCCGA
 GCTGCATCCAGGGCTGCGCTGGACACCACTACCAACAGCGAGGAGTCCCTGGATTTCAGCGAGAGCCT
 GGAGCAGGCTCCACAGAGCGGGTGTCTAGGGCTGGGAGGCAGCTGCATCGGCATCTGCTGGCCACCTGC
 CCAAACCTCATCCGAGACCGGAAGTACCACCTTAGGCTCTATCGGCAGTGTCTGCTGGCCGGAGCTGG
 TGGATGGGATCTTGGCCCTGGGACTTGGGGTCCATTCCCGAGCCAAGTTGTGGGAATCTGCCAGGTGCT
 GCTGGATGAAGGTGCCCTCTGCCATGTAAACACGACTGGGCCTCCAGGACCGAGATGCCCAATTCTAC
 CGGTTCCCGGGCCGAGCCGAGCCCGTGGAACTCATGAGATGGAGGAGGAGTTGGCCGAAGCTGTGG
 CCCTGCTCTCCAGCGGGGGCTGACGCCCTGCTCACTGTGGCACTTCGAAAGCCCCAGGTGAGCGCAC
 GGATGAAGAGCTGGACCTCATCTTTGAGGAGCTGCTGCACATCAAGGCTGTGGCCACCTCTCCAACCTCG
 GTGAAGCGAGAATTAGCGGCTGTTCTGCTTTGAACCACACAGCAAGGCAGGGACCGTGTGTTCAGCC
 AGGGGGACAAGGGCACTTCGTGGTACATTATCTGGAAGGGATCTGTCAACGTGGTGACCCATGGCAAGGG
 GCTGGTGACCACCTGCATGAGGGAGATGATTTGGACAGCTGGCTCTGGTGAATGATGCACCCCGGCA
 GCCACCATCATCTGCGAGAAGACAAGTGTCAATTCCTGCGTGTGGACAAGCAGGACTTCAACCGTATCA
 TCAAGGATGTGGAGGCAAGACCATGCGGCTGGAAGAACATGGCAAGTGGTGTGGTGTGGAGAGAGC
 CTCTCAGGGCGCCGCCCTTCCCGACCCCAACCCAGGCAGGAACCGGTATACAGTGTGTCTGGCACC
 CCAGAGAAGATCCTAGAGCTTCTGTTGGAGGCCATGGGACCAGATTCCAGTGTCTATGCCCAACAGAGA
 CATTCTCAGCGACTTCTCTGACCCACAGGGTCTTCATGCCACGCCCAACTGCGCTGCCCTTCT
 GCACCATTCCATGTGGAGCCTGCGGGTGGCAGCGAGCAGGAGCGCAGCACCTACGTCTGCAACAAGAGG
 CAGCAGATCTTGCAGGCTGGTGCAGCAGTGGGTGGCCCTGTATGGTCCATGCTCCACACTGACCCTGTGG
 CCACCAGTTCCTCCAGAACTCTCAGACCTGGTGGCAGGGACACCCGACTCAGCAACCTGCTGAGGGGA
 GCAGTGGCCAGAGAGGCGGCGATGCCACAGGTTGGAGAATGGCTGTGGGAATGCATCTCCTCAGATGAAG
 GCCCGGAAGTGGCTGTTGGCTCCCAACAGGACGAGCCCTTCTGGCAGCAGCTGTGCCATCCAAG
 TTGGGGATAAAGTCCCCTATGACATCTGCCGGCCAGACCACTCAGTGTGGACCCTGCAGCTGCCTGTGAC
 AGCCTCCGTGAGAGAGGTGATGGCAGCGTTGGCCAGGAGGATGGCTGGACCAAGGGGCAGGTGCTGGT
 AAGGTCAATTCTGAGGTGATGCCATTGGCCTGCAGCCAGATGCCCGTGGTGTGGCCACATCTCTGGGGC
 TCAATGAGCGTCTTTGTTGTCAACCCACAGGAAGTGCATGAGCTGATCCACACCCCTGACCAGCTGGG
 GCCCACTGTGGGCTCTGCTGAGGGGCTGGACCTGGTGTGAGTGCCAAGGACCTGGCAGGCCAGCTGACGGAC
 CAGACTGGAGCCTCTTCAACAGTATCCACCAGGTGGAGCTGATCCACTATGTGCTGGGCCCCCAGCATC
 TGCGGGATGTACCACCGCCAACCTGGAGCGCTTCATGCGCCGCTTCAATGAGCTGCAGTACTGGGTGGC
 CACCGAGCTGTCTCTGCCCGTGCCCGGCCCGGGCCAGCTGCTCAGGAAGTTCATTAAGCTGGCG
 GCCACCTCAAGGAGCAGAAGAATCTCAATTCCTTCTTGGCGTCATGTTGGCCTCAGCAACTCGGCCA
 TCAGCCGCTAGCCACACCTGGGAGCGGCTGCCTCACAAGTCCGGAAGCTGTACTCCGCCCTCGAGAG
 GCTGTGGATCCCTCATGGAACCACCGGTATACCGACTGGCCCTGCCAAGCTCTCCCTCTGTGCATC
 CCTTCATGCCCTTCTTCTCAAAGACATGACCTTCAATCATGAGGGAACCACACTAGTGAGAATC
 TCATCAACTTTGAGAAGATGAGAATGATGGCCAGAGCCGCGGGATGCTGCACCCTGCCAAGCCACAA
 CCCTGTGCTCTCTACCACTCAGAAGCCGAGTTTCCACCTCCACGAGGACAGCCAGGTGGCGAGGATT
 TCCACATGCTCGGAGCAGTCCCTGAGCACCCGAGTCCAGCCAGCACCTGGGCTTATGTCCAGCAGCTGA
 AGGTCATTGACAACCAGCGGGAAGTCTCCCGCTCTCCCGAGAGCTGGAGCCA

ACGCGTACGCGGCCGCTCGAGCAGAACTCATCTCAGAAGAGGATCTGGCAGCAATGATATCCTGGATT
 ACAAGGATGACGACGATAAGGTTTAA

Protein Sequence: >RC219138 representing NM_001098532
 Red=Cloning site Green=Tags(s)

MVLRMRHRPRSCSYQLLLEHQRPSCIQGLRWTPLTNSEESLDFSESLEQASTERVLRAGRQLHRHLLATC
 PNLIRDRKYHLRLYRQCCSGRELVDGILALGLGVHSRSQVVGICQVLLDEGALCHVKHDWAFQDRDAQFY
 RFPGPEPEPVGTHEMEEELAEAVALLSQRGPDALLTVALRKPPGQRTDEELDLIFEELLHIKAVAHLSNS
 VKRELA AVL L FEPH SKAGTVL F SQGDKGTSWYI IWKGSVNVVTHGKGLVTTLHEGDDFQQLALVNDAPRA
 ATIILREDNCHFLRVDKQDFNRI IKDVEAKTMRLEE HGVV L VLERASQGAGPSRPPTPGRNRYTVMSGT
 PEKILELLEAMGPDSSAHDPTE TFLSDFLLTHRVMPSAQLCAALLHHFHVEPAGGSEQERSTYVCNKR
 QQILRLVSQWVALYGSMLHTDPVATSF LQKLSDLVGRDTRL SNLLREQWPERRRCHRLENGCGNASPQMK
 ARNLPVWLPNQDEPLPGSSCAIQVGD KVPYD ICRPDH SVLTLQLPVTASVREVM AALAEQEDGWTKGQVLV
 KVNSAGDAIGLQPDARGVATSLGLNERL FV VNPQEVHELIPHPDQLGPTVGS AEGLDLVS AKDLA GQLTD
 HDWSLFNSIHQVELIHYVLPQHLDVTTANLERFMRRFNELQYVWATELCLCPVGPRAQLLRKFIKLA
 AHLKEQKNLNSFFAVMFGLSNSAISRLAHTWERLPHKVRKLYSALERLLDPSWNHRVYRLALAKLSPPVI
 PFMPLLLKDMTFIHEGNHTLVENLINF EKMRMARAARMLHHC RSHNPVPLSPLRSRVSHLHEDSQVARI
 STCSEQLSTRSPASTWAYVQQLKVIDNQRELSRLSRELEP

TRTRPLEQKLISEEDLAANDILDYKDDDDKV

Chromatograms: https://cdn.origene.com/chromatograms/mk6141_a03.zip

Restriction Sites: SgfI-MluI

Cloning Scheme:

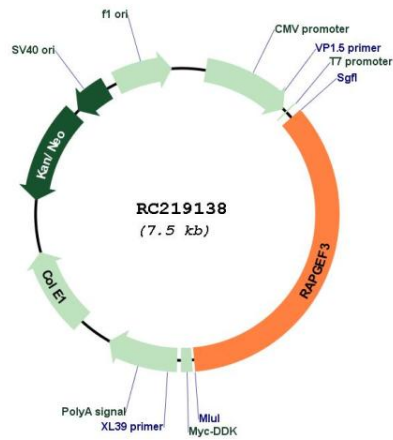
Cloning sites used for ORF Shuttling:



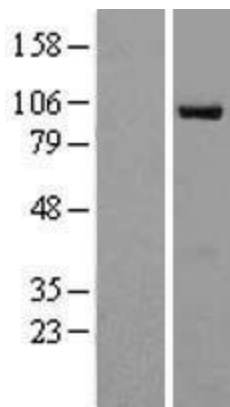
* The last codon before the Stop codon of the ORF

ACCN:	NM_001098532
ORF Size:	2643 bp
OTI Disclaimer:	The molecular sequence of this clone aligns with the gene accession number as a point of reference only. However, individual transcript sequences of the same gene can differ through naturally occurring variations (e.g. polymorphisms), each with its own valid existence. This clone is substantially in agreement with the reference, but a complete review of all prevailing variants is recommended prior to use. More info
OTI Annotation:	This clone was engineered to express the complete ORF with an expression tag. Expression varies depending on the nature of the gene.
Components:	The ORF clone is ion-exchange column purified and shipped in a 2D barcoded Matrix tube containing 10ug of transfection-ready, dried plasmid DNA (reconstitute with 100 ul of water).
Reconstitution Method:	<ol style="list-style-type: none">1. Centrifuge at 5,000xg for 5min.2. Carefully open the tube and add 100ul of sterile water to dissolve the DNA.3. Close the tube and incubate for 10 minutes at room temperature.4. Briefly vortex the tube and then do a quick spin (less than 5000xg) to concentrate the liquid at the bottom.5. Store the suspended plasmid at -20°C. The DNA is stable for at least one year from date of shipping when stored at -20°C.
RefSeq:	NM_001098532.2 , NP_001092002.1
RefSeq Size:	3425 bp
RefSeq ORF:	2646 bp
Locus ID:	10411
UniProt ID:	O95398
Cytogenetics:	12q13.11
Protein Pathways:	Leukocyte transendothelial migration, Long-term potentiation
MW:	99.2 kDa
Gene Summary:	Guanine nucleotide exchange factor (GEF) for RAP1A and RAP2A small GTPases that is activated by binding cAMP. Through simultaneous binding of PDE3B to RAPGEF3 and PIK3R6 is assembled in a signaling complex in which it activates the PI3K gamma complex and which is involved in angiogenesis. Plays a role in the modulation of the cAMP-induced dynamic control of endothelial barrier function through a pathway that is independent on Rho-mediated signaling. Required for the actin rearrangement at cell-cell junctions, such as stress fibers and junctional actin.[UniProtKB/Swiss-Prot Function]

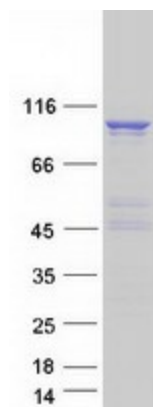
Product images:



Circular map for RC219138



Western blot validation of overexpression lysate (Cat# [LY420629]) using anti-DDK antibody (Cat# [TA50011-100]). Left: Cell lysates from untransfected HEK293T cells; Right: Cell lysates from HEK293T cells transfected with RC219138 using transfection reagent MegaTran 2.0 (Cat# [TT210002]).



Coomassie blue staining of purified RAPGEF3 protein (Cat# [TP319138]). The protein was produced from HEK293T cells transfected with RAPGEF3 cDNA clone (Cat# RC219138) using MegaTran 2.0 (Cat# [TT210002]).