

## Product datasheet for RC219137L1

### UBXN2B (NM\_001077619) Human Tagged Lenti ORF Clone

#### Product data:

Product Type:	Expression Plasmids
Product Name:	UBXN2B (NM_001077619) Human Tagged Lenti ORF Clone
Tag:	Myc-DDK
Symbol:	UBXN2B
Synonyms:	p37
Mammalian Cell Selection:	None
Vector:	pLenti-C-Myc-DDK (PS100064)
E. coli Selection:	Chloramphenicol (34 ug/mL)
ORF Nucleotide Sequence:	The ORF insert of this clone is exactly the same as(RC219137).
Restriction Sites:	SgfI-MluI
Cloning Scheme:	

Cloning sites used for ORF Shuttling:



\* The last codon before the Stop codon of the ORF.

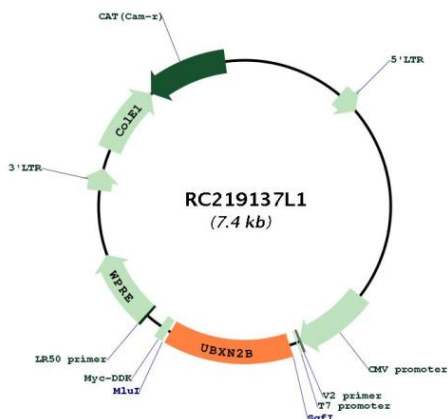
ACCN:	NM_001077619
ORF Size:	993 bp



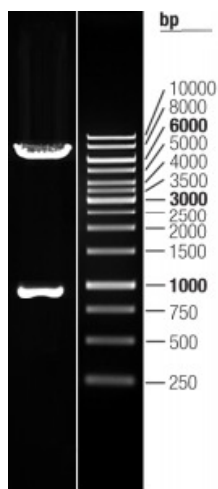
[View online >](#)

<b>OTI Disclaimer:</b>	The molecular sequence of this clone aligns with the gene accession number as a point of reference only. However, individual transcript sequences of the same gene can differ through naturally occurring variations (e.g. polymorphisms), each with its own valid existence. This clone is substantially in agreement with the reference, but a complete review of all prevailing variants is recommended prior to use. <a href="#">More info</a>
<b>OTI Annotation:</b>	This clone was engineered to express the complete ORF with an expression tag. Expression varies depending on the nature of the gene.
<b>Components:</b>	The ORF clone is ion-exchange column purified and shipped in a 2D barcoded Matrix tube containing 10ug of transfection-ready, dried plasmid DNA (reconstitute with 100 ul of water).
<b>Reconstitution Method:</b>	<ol style="list-style-type: none"> <li>1. Centrifuge at 5,000xg for 5min.</li> <li>2. Carefully open the tube and add 100ul of sterile water to dissolve the DNA.</li> <li>3. Close the tube and incubate for 10 minutes at room temperature.</li> <li>4. Briefly vortex the tube and then do a quick spin (less than 5000xg) to concentrate the liquid at the bottom.</li> <li>5. Store the suspended plasmid at -20°C. The DNA is stable for at least one year from date of shipping when stored at -20°C.</li> </ol>
<b>RefSeq:</b>	<a href="#">NM_001077619.1</a> , <a href="#">NP_001071087.1</a>
<b>RefSeq Size:</b>	5088 bp
<b>RefSeq ORF:</b>	996 bp
<b>Locus ID:</b>	137886
<b>UniProt ID:</b>	<a href="#">Q14CS0</a>
<b>Cytogenetics:</b>	8q12.1
<b>MW:</b>	37.1 kDa
<b>Gene Summary:</b>	Adapter protein required for Golgi and endoplasmic reticulum biogenesis (PubMed:17141156). Involved in Golgi and endoplasmic reticulum maintenance during interphase and in their reassembly at the end of mitosis (PubMed:17141156). The complex formed with VCP has membrane fusion activity; membrane fusion activity requires USO1-GOLGA2 tethering and BET1L (PubMed:17141156). VCPIP1 is also required, but not its deubiquitinating activity (PubMed:17141156). Together with NSFL1C/p47, regulates the centrosomal levels of kinase AURKA/Aurora A during mitotic progression by promoting AURKA removal from centrosomes in prophase (PubMed:23649807). Also, regulates spindle orientation during mitosis (PubMed:23649807).[UniProtKB/Swiss-Prot Function]

Product images:



Circular map for RC219137L1



Double digestion of RC219137L1 using SgfI and MluI