

## Product datasheet for **RC219134**

### **GGA1 (NM\_013365) Human Tagged ORF Clone**

#### **Product data:**

Product Type:	Expression Plasmids
Product Name:	GGA1 (NM_013365) Human Tagged ORF Clone
Tag:	Myc-DDK
Symbol:	GGA1
Mammalian Cell Selection:	Neomycin
Vector:	pCMV6-Entry (PS100001)
E. coli Selection:	Kanamycin (25 ug/mL)



[View online »](#)

ORF Nucleotide  
Sequence:

>RC219134 representing NM\_013365  
Red=Cloning site Blue=ORF Green=Tags(s)

TTTTGTAATACGACTCACTATAGGGCGGCCGGAATTCGTCGACTGGATCCGGTACCGAGGAGATCTGCC  
GCCCGCATCGCC

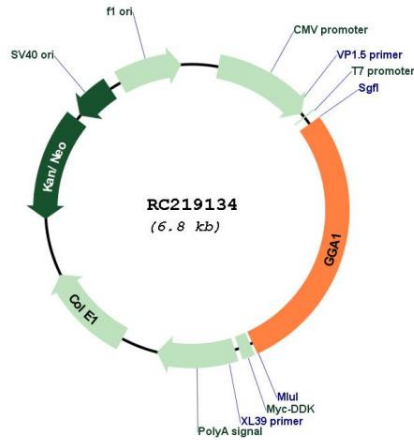
ATGGAGCCCGCATGGAGCCGAGACTCTGGAGGCGCAATCAATAGAGCCACGAACCCCTGAACAAGG  
AGCTCGACTGGGCCAGCATCAACGGCTTCTGCGAGCAGCTCAACGAGGACTTTGAGGGCCCTCCACTCGC  
CACCCGGCTGCTGGCCACAAGATCCAGTCCCCACAGGAGTGGGAGGCGATCCAGGCCTTACCGGTGCTG  
GAAACATGCATGAAGAGCTGCGGCAAGCGTTCCACGACGAAGTGGGCAAGTTCCGCTTTCTCAACGAGC  
TCATCAAGGTCGTGTCTCCCAAGTATCTGGGCTCTCGGACATCGGAGAAGGTGAAGAACAAGATCTTGA  
GCTCCTTACAGCTGGACAGTGGGCTGCCCGAGGAGGTGAAAATCGCAGAGGCCACCAGATGCTAAAG  
AAGCAGGGGATTGTAAGTCCGACCCCAAGCTTCCAGATGACACTACCTTCCCCTTCTCCTCCACGGC  
CGAAGAATGTGATCTTTGAAGATGAGGAGAAATCCAAGATGCTGGCCCGCTGCTGAAGAGCTCCCATCC  
CGAAGACCTCCGCGCAGCCAATAAGCTCATCAAAGAGATGGTGCAGGAGGACCAGAAGCGGATGGAGAAG  
ATCTCGAAGAGGGTGAATGCCATCGAGGAGGTGAACAACAATGTGAAACTGCTCACGGAGATGGTATGA  
GCCACAGCCAGGGCGGCCGAGCAGCTGGCAGCAGCGAGGACCTCATGAAGGAACTGTACCAGCGCTGTGA  
GCGGATGCGGCCACGCTCTTCCGACTGGCGAGTGACACAGAGGACAATGATGAGGCCTTAGCGGAGATC  
CTGACGGCCAATGACAACCTCACCCAGGTGATCAACCTGTATAAGCAGCTGGTGCAGGGTGGAGGAGTCA  
ACGGTGTGCCACAGCCGGCTCCATCCCTGGGAGCACCTCGGCCCTGCTGGATCTCTCAGGCCTGGATCT  
CCCCTGCGGGCACCACCTACCCAGCTATGCCACCCGCCCTGGCGAGCAGGCCAGCCCTGAGCAGCCC  
AGTGCCTCAGTTTCCCTGCTTGACGACGAGCTCATGTCTCTGGGCTCAGTGACCCACACCCCTTCCAG  
GCCAAGCCTGGATGGTACCGGATGGAACAGTTCAGTCGTCGGATGCCACTGAGCCCCAGCCCCTGC  
TCTGGCCAGGCCCCAGTATGGAAGCCGACCCACGCGCAGACATCCCTGCCAGCAAGCAGCGGTCTG  
GACGACCTAGACCTCCTGGGGAAGACCTCCTGCAGCAGTCGCTGCCCCCGGAATCCCAGCAAGTGCAGT  
GGGAGAAGCAGCAGCCAACCCCGGCTCACACTCCGGGACCTGCAGAATAAGAGCAGCAGCTGCAGCTC  
CCCCAGCTCCAGCGCCACCAGCCTTCTCCACACCGTGTCCCAGAGCCCCCAGGCCTCCGACGAGCCC  
GTACCAACCGAGCTCTACTGGCCAGCATCACTGTGCCCTGGAGTCCATCAAACCCAGCAACATCCTGC  
CCGTGACTGTGTATGACCAGCACGGCTTCCGCATCCTCTCCATTTTGGCCGGGACCCACTGCCAGGGCG  
CTCCGACGTGCTGGTGGTGGTGGTTCCATGCTGAGCACCGCCCCCAGCCCATCCGCAACATCGTGTT  
CAGTCAGCTGTCCCAAGTTATGAAGGTGAAGCTGCAGCCACCCTCGGGCACGGAGCTGCCAGCTTTTA  
ACCCCATCGTCCACCCCTCAGCAATCACCCAGGTCTGCTGCTTGCCAACCCCAAGGAGAAGGTTCCG  
CCTCCGCTACAAGCTCACCTTACCATGGGTGACCAGACCTACAACGAGATGGGGATGTGGACCAGTTC  
CCCCACCTGAAACCTGGGGTAGCCTC

ACGCGTACGCGGCCGCTCGAGCAGAACTCATCTCAGAAGAGGATCTGGCAGCAATGATATCCTGGATT  
ACAAGGATGACGACGATAAGGTTAA

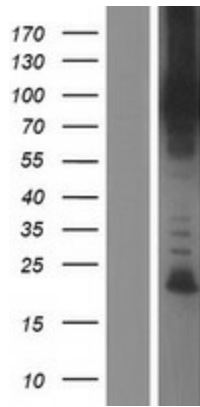


<b>Components:</b>	The ORF clone is ion-exchange column purified and shipped in a 2D barcoded Matrix tube containing 10ug of transfection-ready, dried plasmid DNA (reconstitute with 100 ul of water).
<b>Reconstitution Method:</b>	<ol style="list-style-type: none"><li>1. Centrifuge at 5,000xg for 5min.</li><li>2. Carefully open the tube and add 100ul of sterile water to dissolve the DNA.</li><li>3. Close the tube and incubate for 10 minutes at room temperature.</li><li>4. Briefly vortex the tube and then do a quick spin (less than 5000xg) to concentrate the liquid at the bottom.</li><li>5. Store the suspended plasmid at -20°C. The DNA is stable for at least one year from date of shipping when stored at -20°C.</li></ol>
<b>RefSeq:</b>	<a href="#">NM_013365.5</a>
<b>RefSeq Size:</b>	3163 bp
<b>RefSeq ORF:</b>	1920 bp
<b>Locus ID:</b>	26088
<b>UniProt ID:</b>	<a href="#">Q9UJY5</a>
<b>Cytogenetics:</b>	22q13.1
<b>Domains:</b>	VHS, GAT, Alpha_adaptinC2
<b>Protein Families:</b>	Druggable Genome
<b>Protein Pathways:</b>	Lysosome
<b>MW:</b>	70.2 kDa
<b>Gene Summary:</b>	This gene encodes a member of the Golgi-localized, gamma adaptin ear-containing, ARF-binding (GGA) protein family. Members of this family are ubiquitous coat proteins that regulate the trafficking of proteins between the trans-Golgi network and the lysosome. These proteins share an amino-terminal VHS domain which mediates sorting of the mannose 6-phosphate receptors at the trans-Golgi network. They also contain a carboxy-terminal region with homology to the ear domain of gamma-adaptins. Multiple alternatively spliced transcript variants encoding different isoforms have been found for this gene. [provided by RefSeq, Jul 2008]

Product images:



Circular map for RC219134



Western blot validation of overexpression lysate (Cat# [LY415668]) using anti-DDK antibody (Cat# [TA50011-100]). Left: Cell lysates from untransfected HEK293T cells; Right: Cell lysates from HEK293T cells transfected with RC219134 using transfection reagent MegaTran 2.0 (Cat# [TT210002]).