

Product datasheet for RC219122

IGFBPL1 (NM_001007563) Human Tagged ORF Clone

Product data:

Product Type:	Expression Plasmids
Product Name:	IGFBPL1 (NM_001007563) Human Tagged ORF Clone
Tag:	Myc-DDK
Symbol:	IGFBPL1
Synonyms:	bA113O24.1; IGFBP-RP4; IGFBPRP4
Mammalian Cell Selection:	Neomycin
Vector:	pCMV6-Entry (PS100001)
E. coli Selection:	Kanamycin (25 ug/mL)
ORF Nucleotide Sequence:	>RC219122 representing NM_001007563 Red=Cloning site Blue=ORF Green=Tags(s)

TTTTGTAATACGACTCACTATAGGGCGGCCGGAATTCGTCGACTGGATCCGGTACCGAGGAGATCTGCC
GCC**CGATCGCC**

ATGCCGCGTTGTCTCTGCTCTTGCCGCTGCTGCTTCTGCTGCTGCTGCCGCTGCTGCCGCCGTGTCCC
CGAGCCTTGGGATCCGCGACGTGGGCGGCCGGCCCAAGTGTGGTCCGTGCCGCCAGAGGGCTGCC
GGCGCTGCGCCCTGCCGGCGCCGGGATCTCGGCGCTCGACGAGTGGGCTGCTGCGCCGCTGCCTG
GGAGCCGAGGGCGGAGCTGCGGGGCCGCGCCGGCGGGCGCTGTGCCCGGCCCTGGTATGCGCGAGCC
AGGCCGCTGGGGCAGCGCCGAGGGCACGGGCTCTGCGTGTGCGCGCAGCGCGCACCGTCTGCGGCTC
CGACGGTCTGTCGTAACCCAGCGTCTGCGCGCTGCGCCTGCGCGCTCGGCACACGCCCGCGCGCACCCC
GGTCACCTGCACAAGGCGCGCAGCGGCCCTTGCGAGTTGCTCCTGTGGTTCGTCCTCCCGGAAGTG
TTCACAACGTCACCGGGCGCAGGTGGGCTGTCTGTGAAGTGAGGGCTGTGCCTACCCAGTCATCAC
GTGGAGAAAGGTCACGAAGTCCCCTGAGGGCACCAAGCACTGGAGGAGCTGCCTGGGGACCATGTCAAT
ATAGCTGTCCAAGTGGAGGGGGCCCTTCTGACCATGAGGCCACGGCCTGGATTTTATCAACCCCTGC
GAAAGGAGGATGAGGGTGTGTACCAGTGCCATGCAGCCAACATGGTGGGAGAGGCTGAGTCCCACAGCAC
AGTGACGGTCTAGATCTGAGTAAATACAGGAGCTTCCACTTCCAGCTCCCGATGACCGCATG

ACGCGTACGCGGCCGCTCGAGCAGAACTCATCTCAGAAGAGGATCTGGCAGCAAATGATATCCTGGATT
ACAAGGATGACGACGATAAGGTTTAA



[View online »](#)

Protein Sequence: >RC219122 representing NM_001007563
Red=Cloning site Green=Tags(s)

MPRLSLLLPLLLLLLPLLPPLSPSLGIRDVGGRRPKCGPCRPEGCPAPAPCPAPGISALDECGCCARCL
 GAEGASCGGRAGRCGPGLVCASQAAGAAPEGTGLCVCAQRGTVCSDGRSYPSCALRLRARHTPRAHP
 GHLHKARDGPCEFAPVVVVPPRSVHNVGTGAQVGLSCEVRAVPTPVITWRKVTKSPEGTQALEELPGDHVN
 IAVQVRGGPSDHEATAWILINPLRKEDEGVYQCHAANMVGAEESHSTVTVLDLSKYRSFHFPAPDDRM

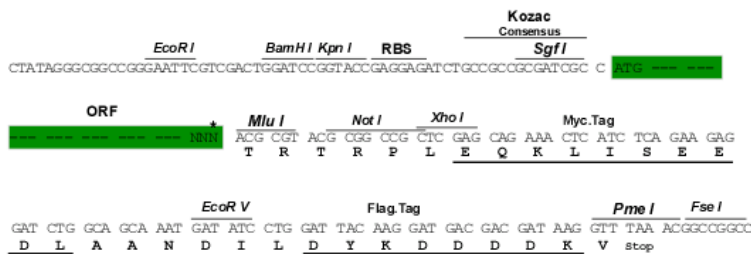
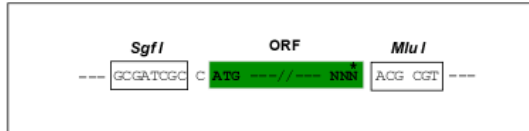
TRTRPLEQKLISEEDLAANDILDYKDDDDKV

Chromatograms: https://cdn.origene.com/chromatograms/mg3517_c09.zip

Restriction Sites: SgfI-MluI

Cloning Scheme:

Cloning sites used for ORF Shuttling:



* The last codon before the Stop codon of the ORF

ACCN: NM_001007563

ORF Size: 834 bp

OTI Disclaimer: The molecular sequence of this clone aligns with the gene accession number as a point of reference only. However, individual transcript sequences of the same gene can differ through naturally occurring variations (e.g. polymorphisms), each with its own valid existence. This clone is substantially in agreement with the reference, but a complete review of all prevailing variants is recommended prior to use. [More info](#)

OTI Annotation: This clone was engineered to express the complete ORF with an expression tag. Expression varies depending on the nature of the gene.

Components: The ORF clone is ion-exchange column purified and shipped in a 2D barcoded Matrix tube containing 10ug of transfection-ready, dried plasmid DNA (reconstitute with 100 ul of water).

Reconstitution Method:

1. Centrifuge at 5,000xg for 5min.
2. Carefully open the tube and add 100ul of sterile water to dissolve the DNA.
3. Close the tube and incubate for 10 minutes at room temperature.
4. Briefly vortex the tube and then do a quick spin (less than 5000xg) to concentrate the liquid at the bottom.
5. Store the suspended plasmid at -20°C. The DNA is stable for at least one year from date of shipping when stored at -20°C.

RefSeq: [NM_001007563.3](#)

RefSeq Size: 1093 bp

RefSeq ORF: 837 bp

Locus ID: 347252

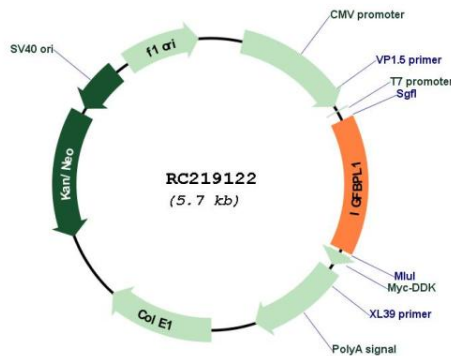
UniProt ID: [Q8WX77](#)

Cytogenetics: 9p13.1

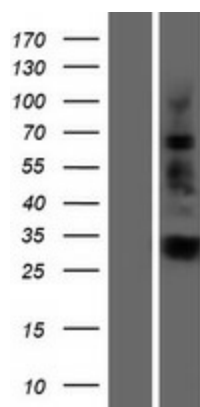
MW: 28.8 kDa

Gene Summary: IGF-binding proteins prolong the half-life of IGFs and have been shown to either inhibit or stimulate the growth promoting effects of the IGFs in cell culture. They alter the interaction of IGFs with their cell surface receptors (By similarity). May be a putative tumor suppressor protein.[UniProtKB/Swiss-Prot Function]

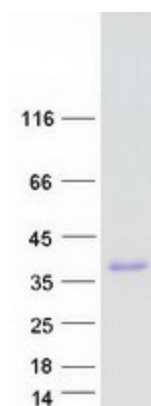
Product images:



Circular map for RC219122



Western blot validation of overexpression lysate (Cat# [LY423513]) using anti-DDK antibody (Cat# [TA50011-100]). Left: Cell lysates from untransfected HEK293T cells; Right: Cell lysates from HEK293T cells transfected with RC219122 using transfection reagent MegaTran 2.0 (Cat# [TT210002]).



Coomassie blue staining of purified IGFBPL1 protein (Cat# [TP319122]). The protein was produced from HEK293T cells transfected with IGFBPL1 cDNA clone (Cat# RC219122) using MegaTran 2.0 (Cat# [TT210002]).