

Product datasheet for RC219120

USP40 (NM_018218) Human Tagged ORF Clone

Product data:

Product Type:	Expression Plasmids
Product Name:	USP40 (NM_018218) Human Tagged ORF Clone
Tag:	Myc-DDK
Symbol:	USP40
Mammalian Cell Selection:	Neomycin
Vector:	pCMV6-Entry (PS100001)
E. coli Selection:	Kanamycin (25 ug/mL)
ORF Nucleotide Sequence:	>RC219120 representing NM_018218 Red=Cloning site Blue=ORF Green=Tags(s)

TTTTGTAATACGACTCACTATAGGGCGGCCGGAATTCGTCGACTGGATCCGGTACCGAGGAGATCTGCC
GCCCGATCGCC

ATGTCACCTTTTTTAAGGGTAGTATTTAGTTTCACAATGTTTGGGGACCTGTTTGAAGAGGAGTATTCCA
CTGTGTCTAATAATCAGTATGGAAAAGGGAAGAAATTAAGACTAAAGCTTTGGAGCCACCTGCTCCTAG
AGAATTCACCAATTTAAGCGGAATCAGAAATCAGGGTGGAACTGTTACCTCAATTCCTTCTTCAGACT
CTTCATTTACACCTGAATTCAGAGAAGCTCTATTTCTCTTGGCCCAGAAGAGCTTGGTTTGTGAAG
ATAAGGATAAACCCGATGCAAAGGTTTCAATCATCCCTTACAGTTACAGCGCTTGGTTGCTCAGCTTCT
GCTCTTAGACCAGGAAGCTGCATCCACAGCAGACCTCACTGACAGCTTTGGGTGGACCAGTAATGAGGAA
ATGAGGCAACATGATGTGCAGGAAGTGAATCGAATCCTCTTCAGCGCTTTGGAACTTCTTTAGTTGGGA
CCTCCGGTCATGACCTCATCTATCGTCTGTACCATGGAACCATTTGTTAACAGATTGTTTGTAAAGAATG
TAAGAAGTTAGCGAGAGGCAGGAAGACTTCTTAGATCTAACAGTAGCAGTCAAAAATGTATCCGGTTTG
GAAGATGCTCTGGAACATGTATGTAGAAGAGGAAGTTTTGATTGTGACAACTGTACCACTGTGGAA
CTTGTGACAGGCTGGTTAAAGCAGCAAAGTCGGCCAAATTACGTAAGCTGCCTCCTTTCTACTGTTTC
ATTACTAAGATTTAATTTTGTGAAATGCGAACGCTACAAGGAACTAGCTGTTATACATCCCT
CTCCGGATTAATCTCAAGCCCTTTGTGAACAGAGTGAATGGATGACTTAGAATATATATGACCTCT
TCTCAGTTATTATACACAAAGGTGGCTGCTACGGAGGCCATTACCATGTATATATTAAGATGTTGATCA
TTTGGGAACTGGCAGTTTCAAGAGGAAAAAGTAAACCAGATGTGAATCTGAAAGATCTCCAGAGTGAA
GAAGAGATTGATCATCCACTGATGATTCTAAAAGCAATCTTATTAGAGGAGAATAATCTAATTCCTGTTG
ATCAGCTGGGCCAGAACTTTTGAAGAAATAGGAATATCTTGGAAACAAGAAGTACAGAAAAACAGCATGG
ACCACTGCGGAAGTTCTTACAGCTCCATTCTCAGATATTTCTACTCAGTTCAGATGAAAGTACAGTTCGT
CTCTTGAAGAATAGTTCTCTCCAGGCTGAGTCTGATTTCCAAAGGAATGACCAGCAAATTTCAAGATGC
TTCTCCAGAATCCCAAGTTTAAACAATAGCATCTCCTGTCCCCACTGGTTTGATATAAATGATTCTAA
AGTCCAGCAATCAGGGAAAAGGATTTGAACAGCAATTTGAGGTAAGAAAGTGCCTACATGTTGTTT
TATCGGAAATCCCAAGTTGCAGAGACCCCTGAAGCTCGAGCTAATCCAAGATATGGGGTTCCATGTCTT
TACTGAATGAAATGGATGCAGCTAACATTGAACTGCAAACCAAAAAGGCGAGAATGTGATTCTGAAACAA



[View online »](#)

TACTTTTGAATTGCATCTTCACCTGGGCCCTCAGTATCATTTTCTCAATGGGGCTCTGCACCCAGTAGTC
TCTCAAACAGAAAGCGTGTGGGATTTGACCTTTGATAAAAAGAAAACTTTAGGAGATCTCCGGCAGTCAA
TATTTTCAGCTGTTAGAATTTTGGGAAGGAGACATGGTTCTTAGTGTTGCAAAGCTTGACCAGCAGGACT
TCACATTTACCAGTCACTTGGCGGGGATGAACTGACACTGTGTGAAACTGAAATTGCTGATGGGGAAGAC
ATCTTTGTGTGGAATGGGGTGGAGTTGGTGGAGTCCACATTCAACTGGTATTGACTGCGAACCTCTAC
TTTTAAATGTTCTTCATCTAGACACAAGCAGTGATGGAGAAAAGTGTTCAGGTGATAGAATCTCCACA
TGTCTTTCCAGCTAATGCAGAAGTGGCCTGTCTCACAGCCTTAGCAATCCCAGCAGGTGTCATCTTC
ATCAACAGTGCTGGATGTCCAGGTGGGGAGGGTTGGACGGCCATCCCAAGGAAGACATGAGGAAGACGT
TCAGGGAGCAAGGGCTCAGAAATGGAAGCTCAATTTTAATTCAGGATTCTCATGATGATAACAGCTTGT
GACCAAGGAAGAGAAATGGGTCAGTATGAATGAGATTGACTGGCTCCACGTTAAAAATTTATGCCAG
TTAGAATCTGAAGAGAAGCAAGTAAAAATACAGCAACTGTTAACACAATGGTGTGGATTCGAATTA
AAGCCATAAAGGAATTAATAATGAAGGAAGTACTGACAACAGCTGTTTGGACCTATTGATAGAAA
TGGGAAGCTTCTTTGTCCAGTCCCGACAGCTATACTTTGAAGGAAGCAGAATTGAAGATGGGAAGTTCA
TTGGGACTGTGTCTTGGAAAAGCACCAAGTTCGTCTCAGTTGTTCTGTTTTTGAATGGGGAGTGACG
TTCAACCTGGGACAGAAATGAAATCGTAGTAGAAGAAACAATATCTGTGAGAGATTGTTTAAAGTTAAT
GCTGAAGAAATCTGGCCTACAAGGAGATGCCTGGCATTACGAAAAATGGATTGGTGCTATGAAGCTGGA
GAGCCTTTATGTGAAGAAGATGCAACACTGAAAGAACTTCTGATATGTTCTGGAGATACTTTGCTTTTAA
TTGAAGGACAACCTTCTCCTCTGGGTTTCTGAAGGTGCCCATCTGGTGGTACCAGCTTCAGGGTCCCTC
AGGACTGTTGGGAGAGTCAATCAGGACCAGACCAACTGTACTTCGTCTTGGGGCAGAGTTTGGAGAGCCACT
TCCAGCCAAGGTGCTTCTGGGAACGAGCCTGCGCAAGTTTCTCTCCTCTACTTGGGAGACATAGAGATCT
CAGAAGATGCCACGCTGGCGGAGCTGAAGTCTCAGGCCATGACCTTGCCCTCTTCTGGAGTTCGGTGT
CCCGTCCCAGCCACCTCAGAGCCTGGACGGTGGAGAGGAAGCGCCAGGCAGGCTTTTACGAACCTGAC
CGGCAGCCACTCAGGGAATATAAACTAGGACGGAGAATTGAGATCTGCTTAGAGCCCTTCAGAAAGGCG
AAAATTTGGGCCCCAGGACGTGCTGCTGAGGACACAGGTGCGCATCCCTGGTGAGAGGACCTATGCCCC
TGCCCTGGACCTGGTGTGGAACGCGGCCAGGGTGGGACTGCCGGCTCCCTGAGGACAGAGATTGCCGAT
TTCTATCGTCTTCCCGTGGAGAAGATTGAAATTGCCAAATACTTTCCCGAAAAGTTCGAGTGGCTCCGA
TATCTAGCTGGAACCAACAAATAACCAAGAGGAAAAAGAAAAAACAAGATTATTTGCAAGGGGCACC
GTATTACTTGAAGACGGAGATACTATTGGTGTAAAGAATCTCCTGATTGACGACGATGATGATTCAGT
ACAATCAGAGATGACACTGGAAGAAAAGCAGAAACAACGGGCCCTGGGAGAAAGGAAAAGCCAAGAAG
CCCTCCATGAGCAGAGCAGCTACATCCTCTCCAGTGCAGAGACGCTGCCCGGCCCGAGCCCCGGAAC
TTCTCTCCATCCAGTGGGGAGCTTCAGA

ACGCGTACGCGGCCGCTCGAGCAGAACTCATCTCAGAAGAGGATCTGGCAGCAAATGATATCCTGGATT
ACAAGGATGACGACGATAAGGTTTAA

Protein Sequence: >RC219120 representing NM_018218
 Red=Cloning site Green=Tags(s)

```

MSLFLRVVFSFTMFGDLFEEYSTVSNQYGGKGLKTKALEPPAPREFTNLSGIRNQGGTCYLNLSLLQT
LHFTPEFREALFSLGPEELGLFEDKDKPDAKVRIIPLQLQRLFAQLLLLDQEAASTADL TDSFGWTSNEE
MRQHDVQELNRILFSALETSLVGTSGHDLIYRL YHGTIVNQIVCKECKNVSERQEDFLDL TVAVKNVSGL
EDALWNMYVEEVEFDCDNL YHCGTCDRLVKAAKSAKLRKLPFLLTVSLLRFNDFVKCERYKETSCTYFP
LRINLKPFCEQSELDLEIYIDLF SVIIHKGGCYGGHYHYIKDVDHLGNWQFQEEKSKPDVNLKDLQSE
EEIDHPLMILKAILLEENNLIPVDQLGQKLLKKIGISWNKKYRKQHGPLRKFQLHSQIFLLSSDESTVR
LLKNSSLQAESDFQRNDQQIFKMLPPESPGLNNSISCPHWFDINDSKVQPIREKDIEQQFQGESAYMLF
YRKSQQLRPPPEARANPRYGVPCHLLNEMDAANIELQTKRAECDSANNTFELHLHLGPQYHFFNGALHPVV
SQTESVWDLTFDKRKTLDLRSIFQLLEFWEGDMVL SVAKLVPAGLHIYQSLGGDELTLCETEIADGED
IFVWNGVEVGGVHIQTGIDCEPLLLNVLHLDTSSDGEKCCQVIESPHVFPANAEGTVL TALAIPAGVIF
INSAGCPGGEGWTAIPKEDMRKTFREQGLRNGSSILIQDSDHNSLLTKEEKWVTSMNEIDLWHVKNLCQ
LESEEKQVKISATVNTMVFDIRIKAIKELKMKELADNSCLRPIDRNGKLLCPVPD SYTLKEAELKMSS
LGLCLGKAPSSSQFLFFAMGSDVQPGTEMEIVVEETISVRDCLKMLKKSGLQGD AWHLRKMDWCYEAG
EPLCEEDATLKELLICSGDTLLIEGQLPPLGFLKVP IWWYQLQGPSGHWFESHQDQTNCTSSWGRVWRAT
SSQGASGNEPAQVSLLYLGDIEISEDATLAELKSQAMTLPPFLEFGVPSPAHLRAWTVERKRPGRLLRTD
RQPLREYKLGRRIEICLEPLQKGENLGPQDVLLRRTQVRIPGERTYAPALDLVWNAAQGGTAGSLRQRVAD
FYRLPVEKIEIAKYFPEKFEWLPISSWNQITKRKKKKKQDYLQGAPYYLKGDTIGVKNLLIDDDDDFS
TIRDDTGKEKQKQRALGRRKSQEALHEQSSYILSSAETPARPRAPETSLSIHVGSFR
  
```

TRTRPLEQKLISEEDLAANDILDYKDDDDKV

Chromatograms: https://cdn.origene.com/chromatograms/mk8009_g04.zip

Restriction Sites: Sgfl-MluI

Cloning Scheme:

Cloning sites used for ORF Shuttling:



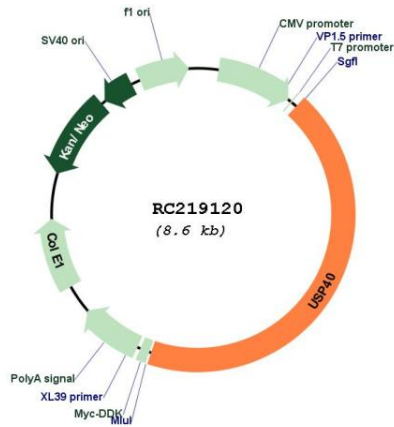
* The last codon before the Stop codon of the ORF

ACCN: NM_018218

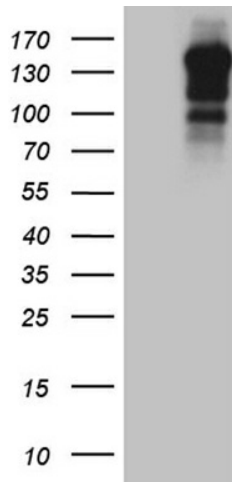
ORF Size: 3741 bp

OTI Disclaimer:	The molecular sequence of this clone aligns with the gene accession number as a point of reference only. However, individual transcript sequences of the same gene can differ through naturally occurring variations (e.g. polymorphisms), each with its own valid existence. This clone is substantially in agreement with the reference, but a complete review of all prevailing variants is recommended prior to use. More info
OTI Annotation:	This clone was engineered to express the complete ORF with an expression tag. Expression varies depending on the nature of the gene.
Components:	The ORF clone is ion-exchange column purified and shipped in a 2D barcoded Matrix tube containing 10ug of transfection-ready, dried plasmid DNA (reconstitute with 100 ul of water).
Reconstitution Method:	<ol style="list-style-type: none"> 1. Centrifuge at 5,000xg for 5min. 2. Carefully open the tube and add 100ul of sterile water to dissolve the DNA. 3. Close the tube and incubate for 10 minutes at room temperature. 4. Briefly vortex the tube and then do a quick spin (less than 5000xg) to concentrate the liquid at the bottom. 5. Store the suspended plasmid at -20°C. The DNA is stable for at least one year from date of shipping when stored at -20°C.
RefSeq:	NM_018218.2 , NP_060688.1
RefSeq Size:	3744 bp
RefSeq ORF:	3708 bp
Locus ID:	55230
UniProt ID:	Q9NVE5
Cytogenetics:	2q37.1
Protein Families:	Protease
MW:	141.4 kDa
Gene Summary:	Modification of cellular proteins by ubiquitin is an essential regulatory mechanism controlled by the coordinated action of multiple ubiquitin-conjugating and deubiquitinating enzymes. USP40 belongs to a large family of cysteine proteases that function as deubiquitinating enzymes (Quesada et al., 2004 [PubMed 14715245]).[supplied by OMIM, Mar 2008]

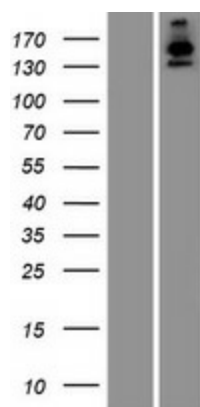
Product images:



Circular map for RC219120



HEK293T cells were transfected with the pCMV6-ENTRY control (Cat# [PS100001], Left lane) or pCMV6-ENTRY USP40 (Cat# RC219120, Right lane) cDNA for 48 hrs and lysed. Equivalent amounts of cell lysates (5 ug per lane) were separated by SDS-PAGE and immunoblotted with anti-USP40 (Cat# [TA809837])(1:2000). Positive lysates [LY413199] (100ug) and [LC413199] (20ug) can be purchased separately from OriGene.



Western blot validation of overexpression lysate (Cat# [LY413199]) using anti-DDK antibody (Cat# [TA50011-100]). Left: Cell lysates from untransfected HEK293T cells; Right: Cell lysates from HEK293T cells transfected with RC219120 using transfection reagent MegaTran 2.0 (Cat# [TT210002]).