

Product datasheet for **RC219109**

FMNL2 (NM_052905) Human Tagged ORF Clone

Product data:

Product Type:	Expression Plasmids
Product Name:	FMNL2 (NM_052905) Human Tagged ORF Clone
Tag:	Myc-DDK
Symbol:	FMNL2
Synonyms:	FHOD2
Mammalian Cell Selection:	Neomycin
Vector:	pCMV6-Entry (PS100001)
E. coli Selection:	Kanamycin (25 ug/mL)
ORF Nucleotide Sequence:	>RC219109 representing NM_052905 Red=Cloning site Blue=ORF Green=Tags(s)

TTTTGTAATACGACTCACTATAGGGCGGCCGGAATTCGTCGACTGGATCCGGTACCGAGGAGATCTGCC
GCC**CGATCGCC**

ATGGGCAACGCAGGGAGCATGGATTCGCAGCAGACCGATTCAGGGCGCACAACTGCCTTTGAAGCTGC
CGATGCCAGAGCCAGGTGAAGTGGAGGAGCGATTTGCCATCGTGTGAATGCTATGAACCTACCTCTGA
CAAAGCCAGGTTACTGCGGCAGTATGATAATGAGAAAAATGGGAAGTATTTGTGATCAGGAACGATTC
CAGGTGAAGAATCTCCCATACATACATTCAAAGCTCAAAGGCTATCTGGATCCAGCTGTAACCAGGA
AGAAATTCAGACGGCGTGTCAAGAATCTACACAAGTCTAAGAGAACTGGAAATTTCTTTGAGAACTAA
CCACATTTGGATGGTTCAGAGAATTTCTGAATGAAGAAAAACAAAGGCTTGATGTTCTAGTGAATATCTC
TCAATTTGCACAGTACGCGGTAACTTTTGACTTTGAAAGTGTGGAGAGTACTGTGGAGAGCTCGGTGGACA
AATCAAAGCCCTGGAGTAGGTCCATCGAGGACCTGCACAGAGGGAGCAACCTGCCCTCACCTGTGGGCAA
CAGTGTCTCCCGCTCTGGAAGACATTCTGCACTGCGATAAATACATTGCCAAGCAGAAGAAGTCTGAAA
AATCAAGATTAGTGAGTAAGAAAGATGATGTGCATGTCTGTATCATGTGTTTACGTGCCATCATGAATT
ATCAGTATGGTTTCAACATGGTCATGTCTCATCCACACGCTGTCAATGAGATTGCACTAAGCCTGAACAA
CAAGAATCCCAGAACAAAAGCCCTTGCTTAGAACTGTTGGCAGCCGTTTGCTTTGTCAGAGGCGGGCAT
GAAATCATTTTATCAGCATTTGATAACTTTAAAGAGGTTTGGGAGAAAAACAGCGCTTTGAGAAGTTGA
TGGAACATTTTCAGGAATGAAGACAATAACATAGATTTTATGGTGGCTTCTATGCAGTTTATTAATTTGT
AGTCCATTCAGTAGAAGATATGAATTTAGAGTTCACCTGCAGTATGAATTTACCAAATAGGCCTGGAC
GAATACTTGACAAGCTGAAACACACTGAGAGTGACAAGCTTCAAGTCCAGATCCAGGCTTACCTGGACA
ATGTTTTTGTAGTAGGAGCTCTACTGGAAGATGCTGAACTAAGAATGCTGCCTTGAGAGGGTGGGAAGA
ACTGGAAGAAAACATTTCTCATTATCTGAAAACTGCAAGACACAGAGAATGAAGCCATGTCCAAGATT
GTGGAAGTGGAAAAGCAACTCATGCAGAGGAACAAGGAGCTGGATGTCGTTCCGGAAATCTACAAAGATG
CAAATACTCAAGTTCACACATTAAGAAAAATGGTCAAAGAAAAAGAAGCAATTCAAAGACAGCTAC
CCTGGAAAAAAGATTTCATGAGCTAGAGAAACAAGGGACATTAATTCAGAAGAAAGGGATGGGGAT



[View online »](#)

ATCGCCATACTGCCAGTTGTGGCTTCTGGCACATTGTCCATGGGGTCAGAAGTGGTAGCAGGTAACCTCTG
 TGGGACCCACAATGGGGCCGCTTCTCAGGACCTTGCCCCCTCCTCCACCACCACTGCCTCCCTCATC
 AGACACACCTGAAACAGTGCAAAATGGTCCAGTAACACCACCTATGCCACCGCCGCCGCCGCCCTCCT
 CCACCTCCTCCTCCCCACCGCCCCCTCCGCTCCTCCTCCTCCAGGCCCTGCAGCTGAGACTGTACCAG
 CTCCTCCCTTAGCACCTCCCCTCCCTCCTGCACCTCCGCTGCCTGGAACATCTTCACCCACAGTGGTTTT
 CAACTCAGGATTAGCAGCTGTGAAAATTAAGAAGCCAATCAAGACGAAGTTCAGAATGCCAGTGTTAAC
 TGGTTGCTCTGAAGCCCAATCAGATCAATGGCACAGTCTTCAATGAAATTGATGATGACCGGAATCTGG
 AGGATTTAAATGTGGATGAATTTGAGGAAATATCAAGACAAAAGCCCAAGGACCTGCCATTGATCTTTC
 TTCAAGCAAAACAGAAGATACCACAGAAGGGATCAAACAAAGTGACATTACTAGAAGCAAACAGGGCCAAA
 AATCTTGCCATAACTTTAAGGAAAGCTGGAAAGACTGCTGATGAAATATGTAAAGCTATTCATGATTTG
 ACTTGAAGACACTGCCTGTGGACTTTGTGGAATGCTTGATGCGGTTCTACCAACTGAGAATGAAGTAA
 AGTGCTTCGGCTCTACGAGCGGGAAGGAAAGCCTCTGGAAAAGTGTGAGATGAAGATCGGTTTCATGATG
 CAGTTTAGTAAAATCGAGAGGCTCATGCAGAAGATGACCATCATGGCCTTCATTGGGAACTTTGTGAAA
 GCATTGATGCTGACTCCTCAACTACATGCGATTATAGCAGCATCTGTCTCTATAAAGTCGTCACAAA
 ACTCAAGAAAATCTGGAGATCATCTTAGCCCTTGGAAACTACATGAATAGCAGTAAAAGAGGAGCAGTT
 TATGGATTTAAACTTCAGAGTTTATGATCTGCTCTTAGATACAAAGTCAACAGACGAAAGCAAACACTGT
 TGCACTATATATCCAATGTGGTGAAGAAAAATATCACCAAGTGTCCCTGTTTTATAATGAGCTTCATTA
 TGTGAAAAAGCTGCTGCAGTCTCCCTTGAGAATGTTTTGCTGGATGTCAAGGAGCTCCAGAGGGGAATG
 GACTTGACCAAGAGAGAGTACACCATGCATGACCATAACACGCTGCTGAAGGAGTTCATCCTCAACAATG
 AGGGGAAGCTGAAGAAGCTGCAGGATGATGCCAAGATCGCACAGGATGCCTTTGATGATGTTGTGAAGTA
 TTTTGGAGAAAACCCCAAGACAACACCACCTCTGTCTTCTTCTGTCTTTGTCGGTTTGTGAAAGCA
 TATAAGCAAGCAGAAGAGGAAAAATGAGCTGAGGAAAAAGCAGGAACAAGCTCTCATGAAAAAATCCTAG
 AGCAAGAAGCTCTGATGGAGCAGCAGGATCCAAGTCTCCTTCTCATAAATCAAAGAGGACGACGCAAGA
 GTTAATTGCAGAATTAAGAAGACGACAAGTTAAAGATAACAGACATGTATATGAGGAAAAAGATGGTGCC
 ATTGAAGATATTACAGATCTTAGAAACCAACCATACAGACGACGCGATGCGGTGAGGAGAAGCGTCA
 GGCGGCGCTTGTGATCAGAACTTGCCTTCTGTTAATGGTGCCGAAATAACAATG

ACGCGTACGCGGCCGCTCGAGCAGAAACTCATCTCAGAAGAGGATCTGGCAGCAAATGATATCCTGGATT
 ACAAGGATGACGACGATAAGGTTTAA

Protein Sequence:

>RC219109 representing NM_052905
 Red=Cloning site Green=Tags(s)

MGNAGSMDSQQTDFRAHNVPLKLPMPPEGELEERFAIVLNAMNLPDKARLLRQYDNEKKWELICDQERF
 QVKNPPHTYIQKLKGYLDPVTRKKFRRRVQESTQVLELEISLRTNHIGWVREFLNEENKGLDVLVEYL
 SFAQYAVTFDFESVESTVESSVDKSKPWSRSIEDLHRGSNLPSPVGNVSVRSRGRHSALRYNTLPSRRTLK
 NSRLVSKKDDVHVCIMCLRAIMNYQYGFNMVMSHPHAVNEIALSLNKNPRTKALVLELLAAVCLVRGGH
 EIIILSAFDNFKEVCGEKQRFELMEHFRNEDNIDFMVASMQFINIVVHSVEDMNFVHLQYEFKLGDL
 EYLDKLRHTESDKLQVQIQAYLDNVFDVGALLEDAETKNAALERVEELEENISHLSEKLQDTENEAMSKI
 VELEKQLMQRNKELDVVREIYKDANTQVHTLRKVMKEKEEAIQRQSTLEKKIHELEKQGTIKIQKKGDD
 IAILPVVAVSGLSMGSEVVAGNSVGPMTGAASSGPLPPPPPLPPSSDTPETVQNGPVTMPMPPPPPPP
 PPPPPPPPPPPPLPGPAAETVPAPPLAPPLPSAPPLPGTSSPTVVFNSGLAAVKIKKPIKTKFRMPVFN
 WVALKPNQINGTVFNEIDDERILEDLNVDEFEEIFKTKAQGPAIDLSSSKQKIPQKGSNKVTLLEANRAK
 NLAITLRKAGTAEICKAIHVFDLKTLPVDFVECLMRFLPTENEVKVLRLYERERKPLENLSDEDRFMM
 QFSKIERLMQKMTIMAFIGNFAESIQLTPQLHAIIAASVSIKSSQKLLKILEIILALGNMNSSKRGAV
 YGFKLQSLDLLDTKSTDRKQTLHYISNVVKEKYHQVSLFYNELHYVEKAAAVSLENVLLDVKELQKGM
 DLTKREYTMHDHNTLLKEFILNNEGKLLKLDQDAKIAQDAFDDVVKYFGENPKTTPPSVFFPVFVRFVKA
 YKQAEENELRKKQEALMEKLLLEQALMEQDPKSPSHKSKRQQQELIAELRRRQVKDNRHVYEGKDGA
 IEDIITDLRNQPYRRADAVRRSVRRRFDDQNLRSVNGAEITM

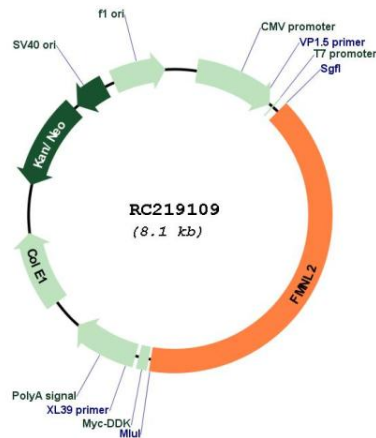
TRTRPLEQKLISEEDLAANDILDYKDDDDKV

Chromatograms:

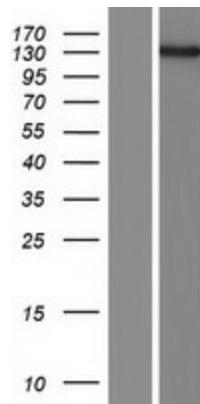
https://cdn.origene.com/chromatograms/mk8022_a01.zip

UniProt ID: [Q96PY5](#)
Cytogenetics: 2q23.3
Protein Families: Transcription Factors
MW: 123.9 kDa
Gene Summary: This gene encodes a formin-related protein. Formin-related proteins have been implicated in morphogenesis, cytokinesis, and cell polarity. Alternatively spliced transcript variants encoding different isoforms have been described but their full-length nature has yet to be determined. [provided by RefSeq, Jul 2008]

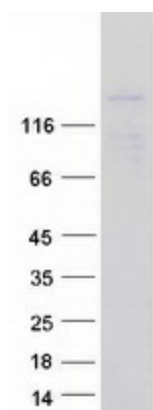
Product images:



Circular map for RC219109



Western blot validation of overexpression lysate (Cat# [LY409402]) using anti-DDK antibody (Cat# [TA50011-100]). Left: Cell lysates from untransfected HEK293T cells; Right: Cell lysates from HEK293T cells transfected with RC219109 using transfection reagent MegaTran 2.0 (Cat# [TT210002]).



Coomassie blue staining of purified FMNL2 protein (Cat# [TP319109]). The protein was produced from HEK293T cells transfected with FMNL2 cDNA clone (Cat# RC219109) using MegaTran 2.0 (Cat# [TT210002]).