

Product datasheet for RC219101

ZNF391 (NM_001076781) Human Tagged ORF Clone

Product data:

Product Type:	Expression Plasmids
Product Name:	ZNF391 (NM_001076781) Human Tagged ORF Clone
Tag:	Myc-DDK
Symbol:	ZNF391
Synonyms:	dj153G14.3
Mammalian Cell Selection:	Neomycin
Vector:	pCMV6-Entry (PS100001)
E. coli Selection:	Kanamycin (25 ug/mL)
ORF Nucleotide Sequence:	>RC219101 representing NM_001076781 Red=Cloning site Blue=ORF Green=Tags(s)

TTTTGTAATACGACTCACTATAGGGCGGCCGGAATTCGTCGACTGGATCCGGTACCGAGGAGATCTGCC
GCC**CGATCGCC**

ATGAAAGCCTCAGAGGGAATACTGCTCAGGGTCTACAAATGAAGAAGACTATAAAAACGAAGGCCAAT
TATCAAGGCAAACAAAATGTCCTGCACAGAAGAAATCCTCTTTGAGAACACAGTGGTCAGAAAAGTGTC
AGTGACACTCAAAGAAATTTTCACAGGGGAGGAAGGCCCTGAATCCAGTGAATTTAGTCTAAGCCCAAAC
CTTGACGCACAACAGAAAATCCAAAGGGACATGGATCCCAATATCTAGGAAAACTCCAAGATAATT
CAGACTTAATTAACACCAAAGACTTTTTCTCACAAGAAAACCTTGTAATGCAATGAATGTGAAAAAGC
CTTTAGTTACCAATCAGACCTTCTGTACACAGTAGAATTCATGGTGGAGAAAAGCCTTTGAATGCAAC
AAATGTGGGAAATCTTTAGCCGAAGTACACACCTTATTGAACATCAAAGAACTCACACTGGAGAGAAAAC
CTTATGAATGCAATGAATGTGAAAAAGCTTTAGCCGGAGCACACATCTTAGTCTACATCAGAGAATCCA
TACTGGAGAAAAACCATATGAATGTAGTGAATGTGAAAAAGCCTTTAGCCGAAGCACTAACCTTAGTCAG
CATCAGCGAACTCATACTCAAGAAAGGCCTTACAAATGTAATGAATGTGGGAAAGCCTTCGGTGACCGTT
CAACCAATAATTCAGCATCAACGAATACACACTGGAGAGAATCCCTATGAATGCAGTAAATGTGAAAAAGC
TTTCAGTTGGATCTCATCGCTTACTGAACATCAGAGAACACACTGGGAGAACCCTATGAGTGCAGT
GAATGTGGGAAAGTGTTTCAGTCGAAGCTCGTCTTTACAGAACATCAGAGAATCCACAGTGGAGAAAAGC
CTCAGAGTGTAGAGTGTGTGAAAGGGCTTCAGTCGAAGCTCATCCCTTATTATTCATCAGAGAATCA
TACCGGGGAGAAGCCGTACAAATGTAATGACTGTGAAAAAGCCTTCTGTGAGAGTCAACTCTGATCAGA
CATCAGCACCTTCATACTAAAGAG

ACGCGTACGCGGCCGCTCGAGCAGAAAACCTCATCTCAGAAGAGGATCTGGCAGCAAATGATATCCTGGATT
ACAAGGATGACGACGATAAGGTTAA



[View online »](#)

Protein Sequence: >RC219101 representing NM_001076781
Red=Cloning site Green=Tags(s)

MESLRGNTAQGPTNEEDYKNEGQLSRQTKCPAQKKSSFENTVVRKVSVTLKEIFTGEEGPESSEFSLSPN
 LDAQQKIPKGHGSPISRKNSKDNSDLIKHQRLF SQRKPKCKNECEKAFSYQSDLLVHSRIHGGEKPFECN
 KCGKFSRSTHLIEHQRTHTGEKPYECNECGKAFSRSTHLSLHQRIHTGEKPYECSECGKAFSRSTNLSQ
 HQRTHTQERPYPKNECGKAFGDRSTIIHQRIHTGENPYECSKCGKAFSWISSL TEHQRTHTGENPYECS
 ECGKVF SRSSSLTEHQRIHSGEKPHECRVCGKGF SRSSSLIIHQRTHTGEKPYKNCDCGKAF CQSSTLIR
 HQLHHTKE

TRTRPLEQKLISEEDLAANDILDYKDDDDKV

Chromatograms: https://cdn.origene.com/chromatograms/mk8022_a03.zip

Restriction Sites: SgfI-MluI

Cloning Scheme:



* The last codon before the Stop codon of the ORF

ACCN: NM_001076781

ORF Size: 1074 bp

OTI Disclaimer: The molecular sequence of this clone aligns with the gene accession number as a point of reference only. However, individual transcript sequences of the same gene can differ through naturally occurring variations (e.g. polymorphisms), each with its own valid existence. This clone is substantially in agreement with the reference, but a complete review of all prevailing variants is recommended prior to use. [More info](#)

OTI Annotation: This clone was engineered to express the complete ORF with an expression tag. Expression varies depending on the nature of the gene.

Components: The ORF clone is ion-exchange column purified and shipped in a 2D barcoded Matrix tube containing 10ug of transfection-ready, dried plasmid DNA (reconstitute with 100 ul of water).

Reconstitution Method:

1. Centrifuge at 5,000xg for 5min.
2. Carefully open the tube and add 100ul of sterile water to dissolve the DNA.
3. Close the tube and incubate for 10 minutes at room temperature.
4. Briefly vortex the tube and then do a quick spin (less than 5000xg) to concentrate the liquid at the bottom.
5. Store the suspended plasmid at -20°C. The DNA is stable for at least one year from date of shipping when stored at -20°C.

Note: Plasmids are not sterile. For experiments where strict sterility is required, filtration with 0.22um filter is required.

RefSeq: [NM_001076781.2](#), [NP_001070249.1](#)

RefSeq Size: 1596 bp

RefSeq ORF: 1077 bp

Locus ID: 346157

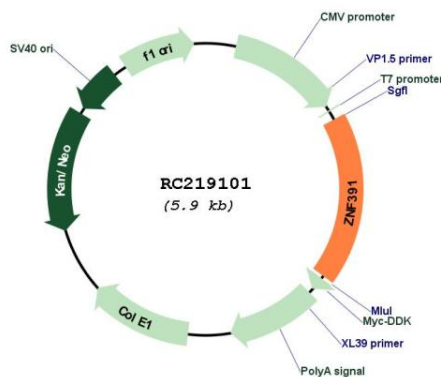
UniProt ID: [Q9UJN7](#)

Cytogenetics: 6p22.1

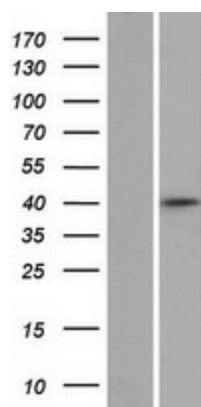
MW: 40.5 kDa

Gene Summary: May be involved in transcriptional regulation.[UniProtKB/Swiss-Prot Function]

Product images:



Circular map for RC219101



Western blot validation of overexpression lysate (Cat# [LY421364]) using anti-DDK antibody (Cat# [TA50011-100]). Left: Cell lysates from untransfected HEK293T cells; Right: Cell lysates from HEK293T cells transfected with RC219101 using transfection reagent MegaTran 2.0 (Cat# [TT210002]).