

Product datasheet for **RC219089**

JIP2 (MAPK8IP2) (NM_016431) Human Tagged ORF Clone

Product data:

Product Type:	Expression Plasmids
Product Name:	JIP2 (MAPK8IP2) (NM_016431) Human Tagged ORF Clone
Tag:	Myc-DDK
Symbol:	JIP2
Synonyms:	IB2; JIP2; PRKM8IPL
Mammalian Cell Selection:	Neomycin
Vector:	pCMV6-Entry (PS100001)
E. coli Selection:	Kanamycin (25 ug/mL)



[View online »](#)

ORF Nucleotide
Sequence:

>RC219089 representing NM_016431
 Red=Cloning site Blue=ORF Green=Tags(s)

TTTTGTAATACGACTCACTATAGGGCGGCCGGGAATTCGTCGACTGGATCCGGTACCGAGGAGATCTGCC
 GCC**CGGATCGCC**

ATGCTCCCGATTTCCTTCTCCTAGCACCTGGGCCCTGGGCTACTGCTGCCCTTGCCACGCCCTGC
 TATCTCCCTCCGTCCTGCAGGACAGCCTCTCCCTGGGGCGCTCGAGCAGCCGCACCCCATCTGCTCCTT
 CCAGGATGACTTCCAGGATTTGAGATGATCGATGACAATGAAGAGGAGGACGATGAGGACGAGGAAGAG
 GAGGAGGAGGAGGAGGGAGATGGGAAGGCCAGGAGGGAGGAGCCCTGGCTCAGAGGCACCTGCC
 CCGGGCCCTTATCCCTCCCTTCCGTTGGAGGAGCCCAACAAGCACCGGCCACCACCCTCCGTCGAC
 CACTGGGGGCCAGGACTCCCTAAACAACAACGGAGGCTTTGACTGGTGCCTCCGGCCTCTGGCAG
 GAGACAGCGCTATGCTCACCCGCCCGGAGGCCCTCAGAGAGCTCCCGGGCCCCCTGCCACGGACA
 CCGGGCCCGGGGCGCAGTCGCCAGTCGCCCGGTTGCGACTGCGAAGGGAACCGCCCTGCGGAACC
 CCCTGCGCCAGGGGGACTTCGCCCTCCTCAGATCCCGGCATCGAGGCTGACCTGAGAAGCCGCTCGAGC
 GCGGGCCCGGGGACGTGCGCAGCAGCCAGGAGCTGTCTCGCCCGGCTCCGACTCGGAGGACGCGGGCG
 GCGCGCCTGGGGCGCATGATCTCGTCCATCTCGGAGACGGAGCTGGAGCTGAGCAGCGATGGCGGAAG
 CAGCAGACGCGCCGCTCCTCGCACCTACCAACTCCATCGAGGAGGCCCTCGTCGCCCGCCTCGGAGCCG
 GAGCCCCCGCGCAACCCCGCGCCCGCCGCTTCTGCCCGTGGGCCCGACGACACCAACAGCGAGT
 ACGAGTCGGGGTCGGAGTCGGAGCCGACTCAGCAGGACGCGGACTCGCCCTGGCTGCTCAGCAACCT
 GGTGAGCCGATGATCTCCGAGGGCTCTCGCCATCCGCTGCCCGGCCAGTGCCTGTCTCTCGCCCG
 CGCCCGCCCGGGAGCCCGTGTGCGCGCCCGGGGGCCCGCCAGGACTCCAGGACCCCGAGCCGGCCG
 CGGGCCCGGGCGGTGGAGCTGGTGGACATGGAGACGCTGTGCGCGCCCGCCCGCCCGCCCGCCG
 GCCTCGACCCGGCCCGCGCAGCCCGGCCCTGCCTATTCTCAGCAACCCACGCGTGACACCATCACG
 CCGCTGTGGGCCGCGCCCGCCCGCCCGCCCGGGACGAGCCTGCTCCGCGCCTGCTCCGAGGAGG
 AGGACGAAGAGGACGACGAGGAAGAGGAGGATGCCGAGGACAGTGCGGGTCCCCGGGGCAGGGGCAC
 GGGCCCTCGGCGCCGCGGACGCTCGTGGTGTACGACGCGGTCAAGTACACGCTGGTGGTGGATGAG
 CACACGACGCTGGAGCTGGTGGCTGCGGCGTGTGCTGGGCTGGGCCACGACGGAAGAGGACAGCG
 GCGGGGAGGCCAGCGAGGAGGAGCGGGCGCGCGCTGTAGGCGCGGTGAGTCTCGGGGACACCTC
 GCCGACAGCCCTGACCTCACTTTCTCCAAGAAGTTCTCAATGTCTTCGTCAACAGCACATCTCGGTCC
 TCCAGCACGAGTCTTTGGCCTTTCTCTGTCTGGTCAACGGCGAGGAGCGAGAGCAGACTCACCGGG
 CTGTGTTCAAGTTCATCCCGCGCATCCAGACGAGCTGGAGCTGGATGTGGATGACCCTGTGTTGGTGG
 GGCCGAGGAGGACGACTTCTGGTTCGTGGCTTCAACATGCGCACGGGGGAGCGCGGTGTGTTTCTGCC
 TTCTACGCCATGCGGTGCCCGCCCTGCCAAGGACCTGCTGGGGAGTAAGCGGAGCCCTGCTGGGTGG
 AGCGCTTTGACGTGCAGTTCTGGGCTCCGTGGAGGTGCCCTGCCACCAGGGCAACGGCATCTGTGTGC
 AGCCATGACAGAAGATTGCCACTGCCCGAAACTGACCGTCCACCTGCGCCCTCTGCCTCTGTGACCTC
 GAGATCTCTCTCGGGGGTCAAGCTGAGTCTGAGCGGAGGAGGGCCGAGTTCAGCGCTGCAGCCATT
 TCTTCCAGATGAAGAATCTCCTTCTGCGGCTGCCATCCCGCAACAGCTGCTATTTGCGCTTCATCAC
 CAAACACCCCTGCTGAGCCGCTTCGCTGCCACGTCTTGTCTCCAGGAGTCCATGAGGCCGGTGGCG
 CAGAGTGTGGCCGCGCCTTCTGGAGTACTACCAAGAGCACCTGGCGTACGCTGCCCCACGGAGGACA
 TCTACCTGGAG

AG**CGGACCG**ACGCGTACGCGGCCGCTCGAGCAGAACTCATCTCAGAAGAGGATCTGGCAGCAAATGATATCC
 TGGATTACAAGGATGACGACGATAAGGTTTAA

Protein Sequence: >RC219089 representing NM_016431
Red=Cloning site Green=Tags(s)

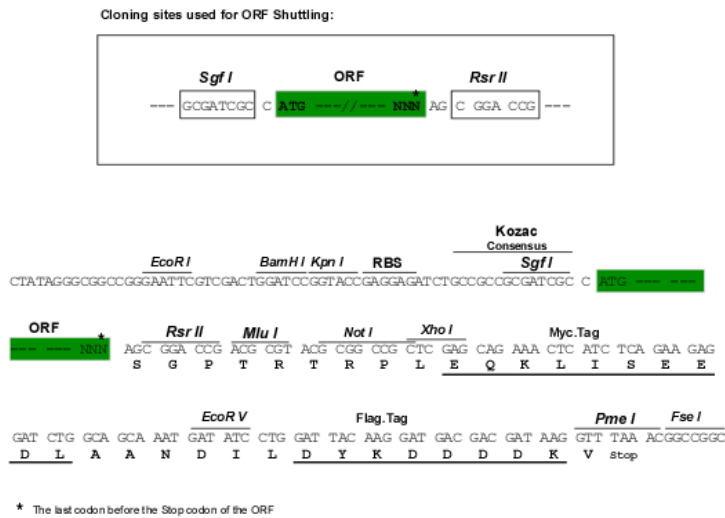
MLPDFPSPSTWAPGLLLPSGPALLSPSVLQDSLGRSEQPHPICSFQDDFQEFEMIDDNEEEDDEDEEE
EEEEEGDGEGQEGGDPGSEAPAGPLIPSPSVEEPHKHRPTTLRLTTLGAQDSLNNNGGFDLVRPASWQ
ETALCSPAPEALRELPGLPATDTGPGGAQSPVRPGDCCEGNRPAEPPAPGGTSPSSDPGIEADLRSS
GGRGGRRSSQELSSPGSDSEDAGGARLGRMISSISETELELSSDGGSSSSGRSSHNTNSIEEASSPASEP
EPPREPPRRPAFLPVGPDDTNSYEYSGSESEPDLESDADSPWLLSNLVSRLMISEGSSPIRCPGQCLSPAP
RPPGEPVSPAGGAAQDSQDPEAAAAGPGGVELVDMETLCAPPPAPAAPRPGPAQPGPCLFLSNPTRDTIT
PLWAAPGRAARPGRACSAACSEEEDEEDDEEEEDAEDSAGSPGGRGTGPSAPRDASLVYDAVKYTLVYDE
HTQLELVSLRRCAGLGHSEEDSGGEASEEEAGAALLGGGQVSGDTPDSDPDLTFKKFLNVFVNSTSR
SSTESFGLFSCLVNGEEREQTHRAVFRFIPRHPDELELDVDDPVLVEAEEDDFWFRGFNMRTGERGVFPA
FYAHAVPGPAKDLLGSKRSPCWVERFDVQFLGSVEVPCHQNGILCAAMQKIATARKLTVHLRPPASCDL
EISLRGVKLSLGGGPEFQRCSHFFQMKNISFCGCHPRNSCYFGFITKHPLLSRFACHVVSQESMRPVA
QSVGRAFLYYQEHLAYACPTEDIYLE

SGPTRRRLEQKLISEEDLAANDILDYKDDDDKV

Chromatograms: https://cdn.origene.com/chromatograms/mk8021_h05.zip

Restriction Sites: Sgfl-RsrII

Cloning Scheme:



ACCN: NM_016431

ORF Size: 2391 bp

OTI Disclaimer: The molecular sequence of this clone aligns with the gene accession number as a point of reference only. However, individual transcript sequences of the same gene can differ through naturally occurring variations (e.g. polymorphisms), each with its own valid existence. This clone is substantially in agreement with the reference, but a complete review of all prevailing variants is recommended prior to use. [More info](#)

OTI Annotation: This clone was engineered to express the complete ORF with an expression tag. Expression varies depending on the nature of the gene.

Components: The ORF clone is ion-exchange column purified and shipped in a 2D barcoded Matrix tube containing 10ug of transfection-ready, dried plasmid DNA (reconstitute with 100 ul of water).

Reconstitution Method:

1. Centrifuge at 5,000xg for 5min.
2. Carefully open the tube and add 100ul of sterile water to dissolve the DNA.
3. Close the tube and incubate for 10 minutes at room temperature.
4. Briefly vortex the tube and then do a quick spin (less than 5000xg) to concentrate the liquid at the bottom.
5. Store the suspended plasmid at -20°C. The DNA is stable for at least one year from date of shipping when stored at -20°C.

RefSeq: [NM_016431.3](#), [NP_057515.1](#)

RefSeq Size: 3216 bp

RefSeq ORF: 2393 bp

Locus ID: 23542

Cytogenetics: 22q13.33

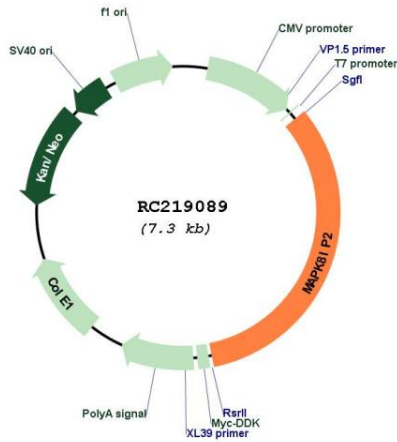
Protein Families: Druggable Genome

Protein Pathways: MAPK signaling pathway

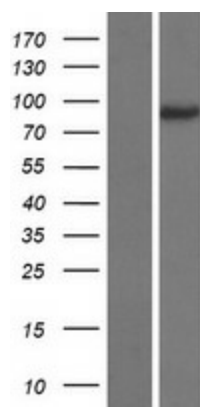
MW: 84.5 kDa

Gene Summary: This gene encodes a scaffold protein that is thought to be involved in the regulation of the c-Jun amino-terminal kinase signaling pathway. This protein has been shown to interact with and regulate the activity of MAPK8/JNK1 and MAP2K7/MKK7 kinases. [provided by RefSeq, Jun 2017]

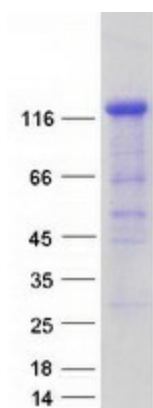
Product images:



Circular map for RC219089



Western blot validation of overexpression lysate (Cat# [LY414017]) using anti-DDK antibody (Cat# [TA50011-100]). Left: Cell lysates from untransfected HEK293T cells; Right: Cell lysates from HEK293T cells transfected with RC219089 using transfection reagent MegaTran 2.0 (Cat# [TT210002]).



Coomassie blue staining of purified MAPK8IP2 protein (Cat# [TP319089]). The protein was produced from HEK293T cells transfected with MAPK8IP2 cDNA clone (Cat# RC219089) using MegaTran 2.0 (Cat# [TT210002]).