

## Product datasheet for **RC219082**

### Nucleolin (NCL) (NM\_005381) Human Tagged ORF Clone

#### Product data:

Product Type:	Expression Plasmids
Product Name:	Nucleolin (NCL) (NM_005381) Human Tagged ORF Clone
Tag:	Myc-DDK
Symbol:	Nucleolin
Synonyms:	C23; Nsr1
Mammalian Cell Selection:	Neomycin
Vector:	pCMV6-Entry (PS100001)
E. coli Selection:	Kanamycin (25 ug/mL)



[View online »](#)

ORF Nucleotide  
Sequence:

>RC219082 representing NM\_005381  
 Red=Cloning site Blue=ORF Green=Tags(s)

TTTTGTAATACGACTCACTATAGGGCGGCCGGAATTCGTCGACTGGATCCGGTACCGAGGAGATCTGCC  
 GCC**CGCATCGCC**

ATGGTGAAGCTCGCGAAGGCAGGTA AAAATCAAGGTGACCCCAAGAAAATGGCTCCTCCTCCAAAGGAGG  
 TAGAAGAAGATAGTGAAGATGAGGAAATGTCAGAAGATGAAGAAGATGATAGCAGTGGAGAAGAGGTCGT  
 CATACTCAGAAGAAAGCAAGAAGGCTGCTGCAACCTCAGCAAAGAAAGGTGGTCGTTTCCCAACAAAA  
 AAGGTTGCAGTTGCCACACCAGCCAAGAAAGCAGCTGTCACTCCAGGCAAAAAGGCAGCAGCAACACCTG  
 CCAAGAAGACAGTTACACCAGCCAAAGCAGTTACCACACCTGGCAAGAAGGGAGCCACACCAGGCAAAGC  
 ATTGGTAGCAACTCCTGGTAAGAAGGGTGTGCCATCCCAGCCAAGGGGGCAAAGAATGGCAAGAATGCC  
 AAGAAGGAAGACAGTGTGAAGAGGAGGATGATGACAGTGAAGAGGATGAGGAGGATGACGAGGACGAGG  
 ATGAGGATGAAGATGAAATTAACCAGCAGCGATGAAAGCAGCAGCTGCTGCCCTGCCTCAGAGGATGA  
 GGACGATGAGGATGACGAAGATGATGAGGATGACGATGACGATGAGGAAGATGACTCTGAAGAAGAAGCT  
 ATGGAGACTACACCAGCCAAAGGAAAGAAAGCTGCAAAAGTTGTTCTGTGAAAGCCAAGAAGCTGGCTG  
 AGGATGAAGATGAAGAAGAGGATGATGAGGACGAGGATGACGACGACGACGAAGATGATGAAGATGATGA  
 TGATGAAGATGATGAGGAGGAGGAAGAAGAGGAGGAGGAAGACCTGTCAAAGAAGCACCTGGAAAAACGA  
 AAGAAGGAAATGGCCAAACAGAAAGCAGCTCCTGAAGCCAAGAAACAGAAAGTGGAAAGGCACAGAACCGA  
 CTACGGCTTTCAATCTCTTTGTTGGAAACCTAACTTTAACAAATCTGCTCCTGAATTA AAAACTGGTAT  
 CAGCGATGTTTTGCTAAAAATGATCTTGCTGTTGGATGTGAGAATTGGTATGACTAGGAAATTTGGT  
 TATGTGGATTTGAATCTGCTGAAGACCTGGAGAAAGCCTTGGAACTCACTGGTTTGAAGTCTTTGGCA  
 ATGAAATTA AACTAGAGAAACCAAAAGGAAAAGACAGTAAGAAAGAGCGAGATGCGAGAACACTTTTGGC  
 TAAAAATCTCCCTTACAAAGTCACTCAGGATGAATTGAAAGAAAGTGTGTTGAAGATGCTGCCGAGATCAGA  
 TTAGTCAGCAAGGATGGGAAAAGTAAAGGGATTGCTTATATTGAATTTAAGACAGAAGCTGATGCAGAGA  
 AAACCTTTGAAGAAAAGCAGGGAACAGAGATCGATGGGCGATCTATTTCCCTGTA CTATACTGGAGAGAA  
 AGGTCAAATCAAGACTATAGAGGTGGAAGAATAGCACTTGGAGTGGTGAATCAAAAACCTGTTTAA  
 AGCAACCTCTCCTACAGTGAACAGAAAGAACTCTT CAGGAAGTATTTGAGAAAGCAACTTTTATCAAAG  
 TACCCCAAGCAAAAATGGCAAATCTAAAGGGTATGCATTTATAGAGTTTGCTTCATTGCAAGACGCTAA  
 AGAAGCTTTAAATTCCTGTAATAAAAGGAAAATGAGGGCAGAGCAATCAGGCTGGAGTTGCAAGGACCC  
 AGGGGATCACCTAATGCCAGAAGCCAGCCATCCAAAACCTGTTTGTCAAAGGCCTGTCTGAGGATACCA  
 CTGAAGAGACATTAAGGAGTCAATTTGACGGCTCCGTTCCGGCAAGGATAGTTACTGACCGGAAACTGG  
 GTCCTCCAAAGGGTTTGGTTTTGTAGACTTCAACAGTGAAGGAGGATGCCAAAGCTGCCAAGGAGGCCATG  
 GAAGACGGTGAATTTGATGGAAATAAAGTTACCTTGGACTGGGCCAAACCTAAGGGTGAAGGTGGCTTCG  
 GGGGTCGTGGTGGAGGCAGAGCGGCTTTGGAGGACGAGGTGGTGGTAGAGGAGGCCGAGGAGGATTTGG  
 TGGCAGAGGCCGGGAGGCTTTGGAGGGCAGAGGAGGCTTCCGAGGAGGCAGAGGAGGAGGAGGTGACCAC  
 AAGCCACAAGGAAAGAAGACGAAGTTTGAA

**ACGCGT**ACGCGGCCGCTCGAGCAGAACTCATCTCAGAAGAGGATCTGGCAGCAAATGATATCCTGGATT  
 ACAAGGATGACGACGATAAGGTTTAA



**OTI Disclaimer:** Due to the inherent nature of this plasmid, standard methods to replicate additional amounts of DNA in E. coli are highly likely to result in mutations and/or rearrangements. Therefore, OriGene does not guarantee the capability to replicate this plasmid DNA. Additional amounts of DNA can be purchased from OriGene with batch-specific, full-sequence verification at a reduced cost. Please contact our customer care team at [custsupport@origene.com](mailto:custsupport@origene.com) or by calling 301.340.3188 option 3 for pricing and delivery.

The molecular sequence of this clone aligns with the gene accession number as a point of reference only. However, individual transcript sequences of the same gene can differ through naturally occurring variations (e.g. polymorphisms), each with its own valid existence. This clone is substantially in agreement with the reference, but a complete review of all prevailing variants is recommended prior to use. [More info](#)

**OTI Annotation:** This clone was engineered to express the complete ORF with an expression tag. Expression varies depending on the nature of the gene.

**Components:** The ORF clone is ion-exchange column purified and shipped in a 2D barcoded Matrix tube containing 10ug of transfection-ready, dried plasmid DNA (reconstitute with 100 ul of water).

**Reconstitution Method:**

1. Centrifuge at 5,000xg for 5min.
2. Carefully open the tube and add 100ul of sterile water to dissolve the DNA.
3. Close the tube and incubate for 10 minutes at room temperature.
4. Briefly vortex the tube and then do a quick spin (less than 5000xg) to concentrate the liquid at the bottom.
5. Store the suspended plasmid at -20°C. The DNA is stable for at least one year from date of shipping when stored at -20°C.

**Note:** Plasmids are not sterile. For experiments where strict sterility is required, filtration with 0.22um filter is required.

**RefSeq:** [NM\\_005381.3](#)

**RefSeq Size:** 2732 bp

**RefSeq ORF:** 2133 bp

**Locus ID:** 4691

**UniProt ID:** [P19338](#)

**Cytogenetics:** 2q37.1

**Domains:** RRM

**Protein Families:** Druggable Genome, Stem cell - Pluripotency

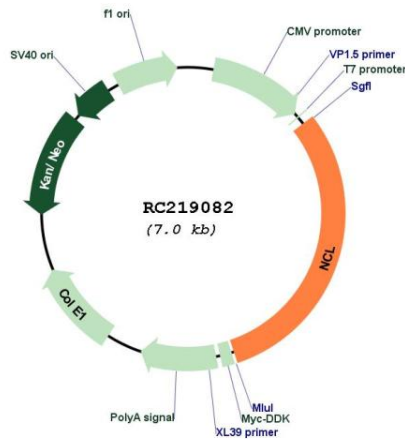
**Protein Pathways:** Pathogenic Escherichia coli infection

**MW:** 76.4 kDa

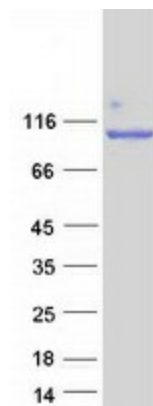
**Gene Summary:**

Nucleolin (NCL), a eukaryotic nucleolar phosphoprotein, is involved in the synthesis and maturation of ribosomes. It is located mainly in dense fibrillar regions of the nucleolus. Human NCL gene consists of 14 exons with 13 introns and spans approximately 11kb. The intron 11 of the NCL gene encodes a small nucleolar RNA, termed U20. [provided by RefSeq, Jul 2008]

**Product images:**



Circular map for RC219082



Coomassie blue staining of purified NCL protein (Cat# [TP319082]). The protein was produced from HEK293T cells transfected with NCL cDNA clone (Cat# RC219082) using MegaTran 2.0 (Cat# [TT210002]).