

Product datasheet for RC219075

JAML (NM_153206) Human Tagged ORF Clone

Product data:

Product Type:	Expression Plasmids
Product Name:	JAML (NM_153206) Human Tagged ORF Clone
Tag:	Myc-DDK
Symbol:	JAML
Synonyms:	AMICA; AMICA1; CREA7-1; CREA7-4; Gm638
Mammalian Cell Selection:	Neomycin
Vector:	pCMV6-Entry (PS100001)
E. coli Selection:	Kanamycin (25 ug/mL)
ORF Nucleotide Sequence:	>RC219075 representing NM_153206 Red=Cloning site Blue=ORF Green=Tags(s)

TTTTGTAATACGACTCACTATAGGGCGGCCGGAATTCGTCGACTGGATCCGGTACCGAGGAGATCTGCC
GCC**CGATCGCC**

ATGGTAAGTGGAGATTATTCCTTGGCCTGAATGACTTGAATGTTTCCCGCCTGAGCTAACAGTCCATG
TGGGTGATTGACTCTGATGGGATGTGTTTCCAGAGCACAGAAGACAAATGTATATTCAAGATAGACTG
GACTCTGTACCAGGAGAGCACGCCAAGGACGAATATGTGCTATACTATTACTCCAATCTCAGTGTGCC
ATTGGGCGCTTCCAGAACCGGTACACTTGATGGGGACATCTTATGCAATGATGGCTCTCTCCTGCTCC
AAGATGTGCAAGAGGCTGACCAGGGAACCTATATCTGTGAAATCCGCCTCAAAGGGGAGAGCCAGGTGTT
CAAGAAGGCGGTGGTACTGCATGTGCTTCCAGAGGAGCCAAAGAGCTCATGGTCCATGTGGGTGGATTG
ATTCAGATGGGATGTGTTTTCCAGAGCACAGAAGTAAACACGTGACCAAGGTAGAATGGATATTTTCAG
GACGGCGCGCAAAGGAGGAGATTGTATTTCTGTTACTACCACAACTCAGGATGTCTGTGGAGTACTCCCA
GAGCTGGGGCCACTTCCAGAATCGTGTGAACCTGGTGGGGACATTTTCCGCAATGACGGTTCATCATG
CTTCAAGGAGTGAGGGAGTCAGATGGAGGAACTACACCTGCAGTATCCACCTAGGGAACCTGGTGTTC
AGAAAACCATTTGTGCTGCATGTCAGCCCGAAGAGCCTCGAACACTGGTGACCCCGCAGCCCTGAGGCC
TCTGGTCTTGGGTGTAATCAGTTGGTATCATTGTGGGAATTGTCTGTGCCACAATCCTGCTGCTCCCT
GTTCTGATATTGATCGTGAAGAAGACCTGTGAAATAAGAGTTTCACTGAAATCTACAGTCTTGGTGAAGA
ACACGAAGAAGACTAATCCAGAGATAAAAAGAAAAACCTGCCATTTTGAAGATGTGAAGGGGAGAAACA
CATTTACTCCCCAATAATTGTACGGGAGGTGATCGAGGAAGAAGCAAGTGAATAATCAGAGGCCACC
TACATGACCATGCACCCAGTTTGGCCTTCTCTGAGGTCAGATCGGAACAACCTCACTTGAATAAAGTCAG
GTGGGGGAATGCCAAAAACAGCAAGCCTTT

ACGCGTACGCGGCCGCTCGAGCAGAACTCATCTCAGAAGAGGATCTGGCAGCAATGATATCCTGGATT
ACAAGGATGACGACGATAAGGTTTAA



[View online >](#)

Protein Sequence: >RC219075 representing NM_153206
Red=Cloning site Green=Tags(s)

MVSGDYSLGLNDLNVSPPELTVHVGDSALMGCVFQSTEDKCIFKIDWTLSPGEHAKDEYVLYYNSL SVP
 IGRFQNRVHLMGDILCNDGSLLLQDVQEQGTGTYICEIRLKGESQVFKKAVVLHVLPEEPKELMVHVGG
 IQMGCVFQSTEVKHVTKVEWIFSGRRAKEEIVFRYYHKLMSVEYSQSWGHFQNRVNLVGDIFRNDGSIM
 LQGVRESDDGNYTCSIHLGNLVFKKTIIVLHVSPPEPRTLVTPAALRPLVLGGNQLVIIIVGIVCATILLLP
 VLILIVKKTGKNSVNSTVLVKNKTKTNPETKEKPKCHFERCEGEKHIYSPPIIVREVIEEEEEPEKSEAT
 YMTMHPVWPSLRSDRNSLEKKS GSGGMPKTQQAF

TRTRPLEQKLISEEDLAANDILDYKDDDDKV

Chromatograms: https://cdn.origene.com/chromatograms/mk8056_c02.zip

Restriction Sites: SgfI-MluI

Cloning Scheme:



* The last codon before the Stop codon of the ORF

ACCN: NM_153206

ORF Size: 1152 bp

OTI Disclaimer: The molecular sequence of this clone aligns with the gene accession number as a point of reference only. However, individual transcript sequences of the same gene can differ through naturally occurring variations (e.g. polymorphisms), each with its own valid existence. This clone is substantially in agreement with the reference, but a complete review of all prevailing variants is recommended prior to use. [More info](#)

OTI Annotation: This clone was engineered to express the complete ORF with an expression tag. Expression varies depending on the nature of the gene.

Components: The ORF clone is ion-exchange column purified and shipped in a 2D barcoded Matrix tube containing 10ug of transfection-ready, dried plasmid DNA (reconstitute with 100 ul of water).

Reconstitution Method:

1. Centrifuge at 5,000xg for 5min.
2. Carefully open the tube and add 100ul of sterile water to dissolve the DNA.
3. Close the tube and incubate for 10 minutes at room temperature.
4. Briefly vortex the tube and then do a quick spin (less than 5000xg) to concentrate the liquid at the bottom.
5. Store the suspended plasmid at -20°C. The DNA is stable for at least one year from date of shipping when stored at -20°C.

RefSeq: [NM_153206.3](#)

RefSeq Size: 1959 bp

RefSeq ORF: 1155 bp

Locus ID: 120425

UniProt ID: [Q86YT9](#)

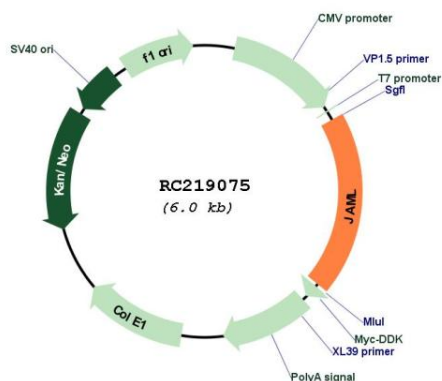
Cytogenetics: 11q23.3

Protein Families: Transmembrane

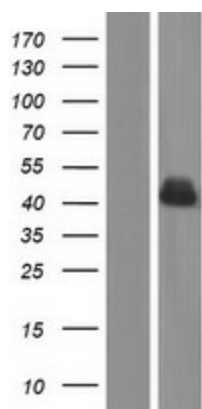
MW: 42.9 kDa

Gene Summary: Transmembrane protein of the plasma membrane of leukocytes that control their migration and activation through interaction with CXADR, a plasma membrane receptor found on adjacent epithelial and endothelial cells. The interaction between both receptors mediates the activation of gamma-delta T-cells, a subpopulation of T-cells residing in epithelia and involved in tissue homeostasis and repair. Upon epithelial CXADR-binding, JAML induces downstream cell signaling events in gamma-delta T-cells through PI3-kinase and MAP kinases. It results in proliferation and production of cytokines and growth factors by T-cells that in turn stimulate epithelial tissues repair. It also controls the transmigration of leukocytes within epithelial and endothelial tissues through adhesive interactions with epithelial and endothelial CXADR.[UniProtKB/Swiss-Prot Function]

Product images:



Circular map for RC219075



Western blot validation of overexpression lysate (Cat# [LY407136]) using anti-DDK antibody (Cat# [TA50011-100]). Left: Cell lysates from untransfected HEK293T cells; Right: Cell lysates from HEK293T cells transfected with RC219075 using transfection reagent MegaTran 2.0 (Cat# [TT210002]).