

Product datasheet for RC219074

SEC24B (NM_001042734) Human Tagged ORF Clone

Product data:

Product Type:	Expression Plasmids
Product Name:	SEC24B (NM_001042734) Human Tagged ORF Clone
Tag:	Myc-DDK
Symbol:	SEC24B
Synonyms:	SEC24
Mammalian Cell Selection:	Neomycin
Vector:	pCMV6-Entry (PS100001)
E. coli Selection:	Kanamycin (25 ug/mL)
ORF Nucleotide Sequence:	>RC219074 representing NM_001042734 Red=Cloning site Blue=ORF Green=Tags(s)

TTTTGTAATACGACTCACTATAGGGCGGCCGGAATTCGTCGACTGGATCCGGTACCGAGGAGATCTGCC
GCC**CGATCGCC**

ATGTCGGCCCCCGCGGGTCTCTACCCGGCCGCCAGCGCCGGATCCCGCCAAGTTCGGCGGAGCGG
CCGTCTCAGGAGCCGAGCGCCCGGGCCGGGTGCGGGCCCGCGCCACCAGCAGAACGGTCCAGC
CCAGAATCAAATGCAGGTTCCATCTGGATATGGATTGCATCATAAAATATATTGCTCCCTCAGGACAT
TACTCTCAAGGACCTGGAAAAATGACCTCATTGCCATTGGATACCCAGTGTGGTATTACTACTGCTC
TCTATACAGTACCAACACAAAATGTGACTCCTAACACAGTGAACCAGCAACCAGGAGCACAGCAGTTGTA
CAGCAGGGTCTCTGCCCTCATATTGTGGATCCACTCTAGGATCTTTCCAAGGTGCTGCATCGTCA
GCATCCCATTGTCATACGAGTGCCTCCCAACATACTCCTCTTTGTGAATCACTACAATAGTCCAGCCA
TGTAATCTGCCAGCTCTTCTGTTGCGTCTCAGGGATTTCCCTCTACTTGTGGTCAATATGCTATGTCAC
TGTTTCTAATGCCGCGTATCCTAGTGTTCATATCCCTCTGCTGCTGGTGTACATATGGGCAAATG
TTACCTCACAGAATGCTCCGACTGTTAGGCCAGTTAAAGATAATTATTCTCTGGTCAAATACAGCTA
TCAGCCATCCATCGCCACTTCCACCTCTACCATCACAACAGCACCACCAGCAGCAAAGTCTTTCCAGGATA
CAGTACTTAACGTGGTTCATCTCCAGGCCTTCCATCGACTCAAGACAATCTCATCCGAAACCACACAGGA
TCCCTGGCTGTAGCGAACAACAACCAACCACTTACTGTTGCAGATTCTTTATCAGTGTCTGTTATGCAAA
ATGTTACGCCTCCCAAGTCCAGCCAGTGGTATCCACTGTTTTATCAGGATCCTCAGGATCCTCATCAAC
AAGAACACCTCCCACTGCAAATACCCAGTTGAGCCTGTGACCTCAGTTACACAGCCATCAGAGCTATTA
CAACAAAAGGTGTTGACAGCTCTTCTACCACAAGCAGTCTTCTCCAATGCCAACAGTTATGATGCC
TGGAAGGAGGCAGTTACCCAGATATGCTTTCTTCATCAGCAAGCAGTCTGCTCCTGATCCCGCCCTGA
ACCTGATCCTGCTTCTGCTCCAGCTCCAGCTCCAGCTCCAGCTCCTGTCGTCCTCAGCCTTCAAAAATG
GCTAAGCCTTTGGCTATGGCTATCCAACACTTCAGCCTGGTTATCAGAATGCTACAGCACCCTTATTT
CTGGAGTACAGCCAGTAACCCGGTATATTCTGGATTCCAGCAGTATCCTCAACAGTATCCTGGTGTGAA
CCAGCTATCCTCCAGTATAGGAGGATTGAGTCTCAGAGTCTCCACAACCAGAAAGCCTGAGACCTGTA



[View online >](#)

AACCTTACTCAGGAGAGGAATATTTTACCTATGACTCCTGTTTGGGCTCCTGTACCTAACTGAATGCAG
ACCTCAAAAAATTAAGTGTAGCCAGATTCATTTGCGTGTACTTTGACAAAATTCACAGACACAGGC
TTTACTGAATAAAGCTAAGCTTCCTTTAGGATTGTTGTTACATCCCTTCAGAGACCTAACGCAATTACCA
GTGATAACATCAAATACCATTGTGAGGTGCCGATCCTGTGCAACGTATATTAACCCTTTGTATCCTTCA
TTGATCAACGTAGATGGAATGCAATTTGTGCTATAGAGTAAACGATGTTCTGAAGAATTTATGTATAA
CCCCCTTACCCGATCTTATGGAGAGCCTCATAAACGACCAGAAGTTCAGAATTCAACTGTGGAGTTCATT
GCTTCTCAGATTACATGCTGCGTCCCTCAACCTGCAGTTTACTTGTGTTGTTTATAGATGTGCTCATA
ATGCAGTGAAGCTGGATATTTGACAATTTGTGCCAGTCACTCCTAGAAAATCTAGACAAGCTTCCTGG
AGATTCACGAACAAGAATAGGATTCATGACCTTTGATAGCACTATTTCATTTCTACAAATTTACAAGAAGGA
TTATCACAGCCTCAAATGTTGATGTGCTGATATAGATGATGTTTTTCTACCTACACCGGATAGTTTAC
TTGTGAATCTATATGAAAGTAAAGAGCTTATAAAAGACTTACTGAATGCATTACCAAACATGTTCCACAA
TACAAGAGAAACACACAGTGCCCTTGGTCTGCACCTCAGGCTGCCTTTAAATTAATGTCTCCAACAGGT
GGCCGTGTGTCTGATTTTACACACAGTACCTTCCTTGGGTGCAGGACTTCTGCAATCCAGAGAAGATC
CTAATCAGAGATCAAGTACAAGGTGGTACAACATCTTGGCCCTGCAACTGATTTTTATAAGAACTTGC
ATTAGATTGCTCGGACAGCAAAGTGCAGTGGATTTGTTCTTTTAAAGTTCACAGTATTCTGATCTTGTCT
TCTCTAGCTTGCATGTCCAAGTATTCTGCAGGGTGCATCTATTATTATCCATCATTCCACTATACTCACA
ATCCTTACAAGCAGAAAAGTTACAAAAAGACCTAAAACGGTATCTCACAGAAAATTTGGGTTTGAAGC
TGTTATGAGAATAAGGTGTACTAAAGGTCTTCAATGCACACTTTTACCGGTAACCTCTTTGTCCGTTCT
ACTGATTTGTTATCCCTTGCCAACATCAATCCTGATGCTGGATTTGCGGTGCAGTTGTCAATTGAAGAAA
GTTTAAACAGATACTTCCTTAGTATGTTTTCAAACAGCCCTATTATATACATCAAGCAAAGGTGAGCGGAG
AATTAGAGTACATACACTTTGTTGCCAGTGGTAAGTTCAGTACAGATGTATATGCGGGAGTGGATGTA
CAAGCTGCCATCTGCCTTCTGGCAAACATGGCTGTGGATCGGTCCGTTTCATCAAGTCTGTCAGATGCAA
GAGATGCCTTAGTGAATGCTGTAGTGGACTCATTGTCTGCATATGGCTCAACTGTCTCAAATTTACAGCA
CTCTGCATTGATGGCGCCAGCTCCCTCAAGTTGTTTCTCTCTATGTTTTGGCCCTTCTCAAACAGAAA
GCATTTAGAACGGGTACAAGCACACGGCTGGATGATCGTGTATATGCCATGTGTCAGATAAAGTCTCAGC
CACTTGTTCATCTAATGAAAATGATTCATCCCAACTTATACAGGATAGACAGATTGACAGATGAGGGTGC
AGTACATGTTAATGACAGGATTGTACCACAGCCACCTCTTCAAAAATTTGCTGCAGAGAAGCTGACAAGA
GAAGGTGCTTTCCTTATGGACTGTGGCTCTGTTTTTTACATTTGGGTTGGGAAAGGCTGTGACAATAACT
TCATAGAGGATGTGCTTGGATATACTAATTTTGCATCAATACCACAGAAAATGACACATCTCCAGAGCT
AGATACTTTTCATCAGAAAAGAGCCAGATCCTTCATAACTGGCTTAGAGACAGCAGACCATTAAGTCCA
ATCCTTACATAGTAAAAGATGAGAGTCTGCCAAAGCAGAATTTTTTTCAGCATTGATTGAAGACCGGA
CAGAGGCTGCATTTTCTACTATGAATTTTTGCTTCATGTTTACAGCAGCAGATTTGTAAG

ACGCGTACGCGGCCGCTCGAGCAGAAAAGTCACTCTCAGAAGAGGATCTGGCAGCAAATGATATCCTGGATT
ACAAGGATGACGACGATAAGGTTTAA

Protein Sequence: >RC219074 representing NM_001042734
 Red=Cloning site Green=Tags(s)

```

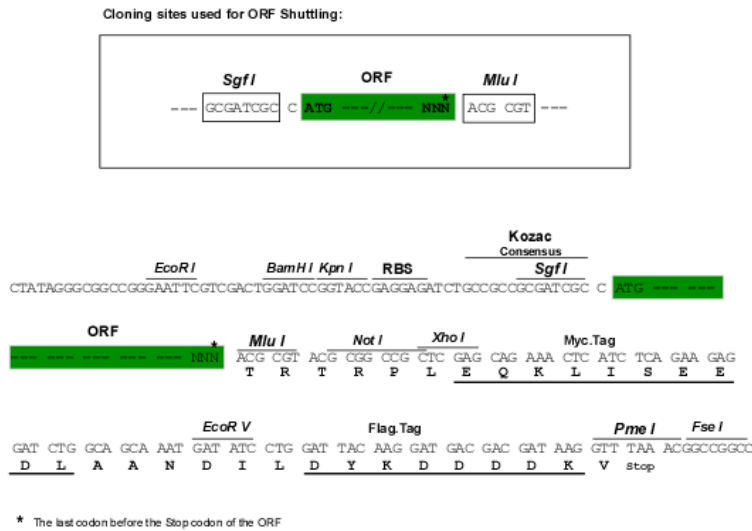
MSAPAGSSHPAASARIPPKFGGAAVSGAAAPAGPGAGPAPHQNGPAQNQMVPVSGYGLHHQNYIAPSGH
YSQPGKMTSLPLDTQCGDYYSALYTPVTQNVTPNTVNQPGAQQLYSRGPPAPHIVGSTLGSFQGAASS
ASHLHTSASQPYSFVNHYNSPAMYSASSSVASQGFSTCGHYAMSTVSNAAYPSVSYPSLPAGDTYQGM
FTSQNAPTVRPVKDNFSGQNTAISHPSPLPPLPSQHHQQLSLSGYSTLTWSSPGLPSTQDNLIRNHTG
SLAVANNPTITVADSLSCPVMQNVQPPKSSPVVSTVLGSSGSSSTRTPPTANHPVEPVTSVTQPSELL
QQKGVDSSTSSASPMPNSYDALEGGSYDMLSSASSPAPDPAPEPDASAPAPASAPAPVVPQPSKM
AKPFYGYPTLQPGYQATAPLISGVQSPNPVYSGFQQYYPQYQVGNQLSSSISGLSLQSSPQPESLRPV
NLTQERNILPMTVPWAPVPLNADLKKLNCSPDSFRCTL TNIPQTQALLNKAKPLPLGLLHPFRDLTQLP
VITSNTIVRCRCRTYINPFVSFIDQRRWKCNCYRVNDVPEEFMYNPL TRSYGEPHKRPEVQNSTVEFI
ASSDYMLRPPQAVYLFVLDVSHNAVEAGYL TILCQSLLLENLTKLPGDSRTRIGFMTFDSTIHFNLQEG
LSQPQMLIVSDIDDVFLPTPDSLLVNL YESKEL IKDLLNALPNMF TNTRETHSALGPALQAFAKLMSPGTG
GRVSVFQTQLPSLGAGLLQSREDPNQRSSTKVVQHLGPATDFYKLLALDCSGQQTAVDL FLLSSQYSDLA
SLACMSKY SAGCIYYYP SFHYTHNPSQA EKLQKDLKRYL TRKIGFEAVMRIRCTKGLSMHTFHGNFVRS
TDLLSLANINPDAGFAVQLSIEESLTDTSLVCFQTALL YTSKGGERRIRVHTLCLPVVSSLADVYAGVDV
QAAICLLANMAVDRSVSSSLSDARDALVNAVVDLSAYGSTVSNLQHSALMAPSSLKFLPLYVLLALKQK
AFRTGTSTRLLDDRVYAMCQIKSQPLVHLMKMIHPNL YRIDRLTDEGAVHVNDRIVPQPPLQKLSAEKLT
EGAFLMDCGSVFYIWWGKGCDDNFIEDVLGYTNFASIPQKMTHLPELDTLSSERARSFITWLRDRSRPLSP
ILHIVKDESPA KAEFFQH LIEDRTEA AFSYEFLLHVQQQICK
  
```

TRTRPLEQKLISEEDLAANDILDYKDDDDKV

Chromatograms: https://cdn.origene.com/chromatograms/mg4071_d04.zip

Restriction Sites: SgfI-MluI

Cloning Scheme:

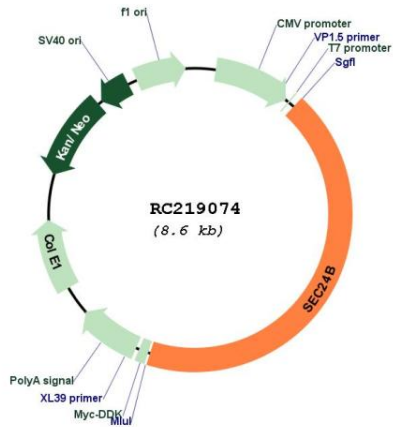


ACCN: NM_001042734

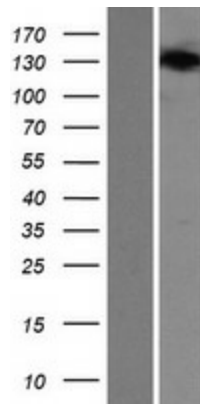
ORF Size: 3699 bp

OTI Disclaimer:	The molecular sequence of this clone aligns with the gene accession number as a point of reference only. However, individual transcript sequences of the same gene can differ through naturally occurring variations (e.g. polymorphisms), each with its own valid existence. This clone is substantially in agreement with the reference, but a complete review of all prevailing variants is recommended prior to use. More info
OTI Annotation:	This clone was engineered to express the complete ORF with an expression tag. Expression varies depending on the nature of the gene.
Components:	The ORF clone is ion-exchange column purified and shipped in a 2D barcoded Matrix tube containing 10ug of transfection-ready, dried plasmid DNA (reconstitute with 100 ul of water).
Reconstitution Method:	<ol style="list-style-type: none">1. Centrifuge at 5,000xg for 5min.2. Carefully open the tube and add 100ul of sterile water to dissolve the DNA.3. Close the tube and incubate for 10 minutes at room temperature.4. Briefly vortex the tube and then do a quick spin (less than 5000xg) to concentrate the liquid at the bottom.5. Store the suspended plasmid at -20°C. The DNA is stable for at least one year from date of shipping when stored at -20°C.
RefSeq:	NM_001042734.3 , NP_001036199.1
RefSeq Size:	4544 bp
RefSeq ORF:	3702 bp
Locus ID:	10427
UniProt ID:	O95487
Cytogenetics:	4q25
MW:	133.4 kDa
Gene Summary:	The protein encoded by this gene is a member of the SEC24 subfamily of the SEC23/SEC24 family, which is involved in vesicle trafficking. The encoded protein is thought to be a cargo-binding component of the COPII vesicle, and is thought to be involved in the transport of secretory proteins from the endoplasmic reticulum to the Golgi apparatus. Mutations in this gene have been associated with neural tube defects, and are thought to be a result of a disruption in interactions with the protein encoded by the VANGL planar cell polarity protein 2 (VANGL2) gene. Alternative splicing results in multiple transcript variants encoding different isoforms. [provided by RefSeq, Dec 2015]

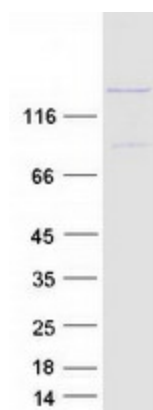
Product images:



Circular map for RC219074



Western blot validation of overexpression lysate (Cat# [LY420801]) using anti-DDK antibody (Cat# [TA50011-100]). Left: Cell lysates from untransfected HEK293T cells; Right: Cell lysates from HEK293T cells transfected with RC219074 using transfection reagent MegaTran 2.0 (Cat# [TT210002]).



Coomassie blue staining of purified SEC24B protein (Cat# [TP319074]). The protein was produced from HEK293T cells transfected with SEC24B cDNA clone (Cat# RC219074) using MegaTran 2.0 (Cat# [TT210002]).