

Product datasheet for RC219072

NMES1 (C15orf48) (NM_197955) Human Tagged ORF Clone

Product data:

Product Type: Expression Plasmids
Product Name: NMES1 (C15orf48) (NM_197955) Human Tagged ORF Clone
Tag: Myc-DDK
Symbol: NMES1
Synonyms: COXFA4L3; FOAP-11; MIR147BHG; MISTRAY; MOCCI; NMES1
Mammalian Cell Selection: Neomycin
Vector: pCMV6-Entry (PS100001)
E. coli Selection: Kanamycin (25 ug/mL)
ORF Nucleotide Sequence: >RC219072 ORF sequence
 Red=Cloning site Blue=ORF Green=Tags(s)

TTTTGTAATACGACTCACTATAGGGCGGCCGGAATTCGTCGACTGGATCCGGTACCGAGGAGATCTGCC
 GCC**CGATCGCC**

ATGAGCTTTTTCCAACCTCTGATGAAAAGGAAGGAAGCTCATTCCCTTGGTGGTGTTCATGACTGTGGCGG
 CGGGTGGAGCCTCATCTTCGCTGTGTATTCTCTTTGGAAAACCGATGTGATCCTTGATCGAAAAAAAA
 TCCAGAACCTTGGGAACTGTGGACCCTACTGTACCTCAAAGCTATAACAATCAACCAACAATGGAAA
 CCCATTGAAGAGTTGAAAATGTCAAAGGGTGACCAA

ACGCGTACGCGGCCGCTCGAGCAGAAACTCATCTCAGAAGAGGATCTGGCAGCAAATGATATCCTGGATT
 ACAAGGATGACGACGATAAGGTTTAA

Protein Sequence: >RC219072 protein sequence
 Red=Cloning site Green=Tags(s)
 MSFFQLLMKRKELIPLVVFMTVAAGGASSFAVYSLWKTDVILDRKKNPEPWETVDPTVPQKLITINQQWK
 PIEELQNVQRVTK

TRTRPLEQKLISEEDLAANDILDYKDDDDKV

Chromatograms: https://cdn.origene.com/chromatograms/mk6320_g07.zip

Restriction Sites: Sgfl-MluI



[View online »](#)

Cloning Scheme:


ACCN: NM_197955

ORF Size: 249 bp

OTI Disclaimer: The molecular sequence of this clone aligns with the gene accession number as a point of reference only. However, individual transcript sequences of the same gene can differ through naturally occurring variations (e.g. polymorphisms), each with its own valid existence. This clone is substantially in agreement with the reference, but a complete review of all prevailing variants is recommended prior to use. [More info](#)

OTI Annotation: This clone was engineered to express the complete ORF with an expression tag. Expression varies depending on the nature of the gene.

Components: The ORF clone is ion-exchange column purified and shipped in a 2D barcoded Matrix tube containing 10ug of transfection-ready, dried plasmid DNA (reconstitute with 100 ul of water).

Reconstitution Method:

1. Centrifuge at 5,000xg for 5min.
2. Carefully open the tube and add 100ul of sterile water to dissolve the DNA.
3. Close the tube and incubate for 10 minutes at room temperature.
4. Briefly vortex the tube and then do a quick spin (less than 5000xg) to concentrate the liquid at the bottom.
5. Store the suspended plasmid at -20°C. The DNA is stable for at least one year from date of shipping when stored at -20°C.

RefSeq: [NM_197955.3](#)

RefSeq Size: 839 bp

RefSeq ORF: 252 bp

Locus ID: 84419

UniProt ID: [Q9C002](#)

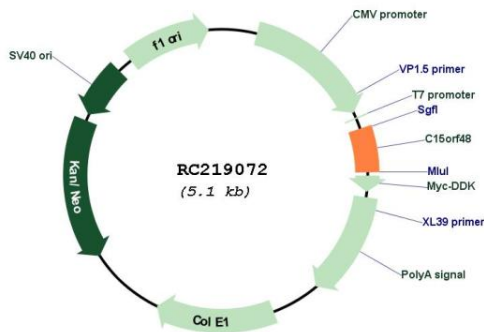
Cytogenetics: 15q21.1

Protein Families: Transmembrane

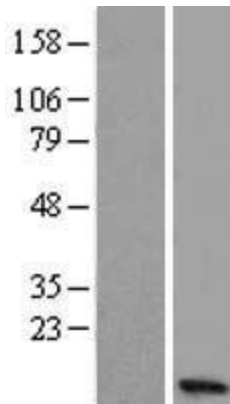
MW: 9.6 kDa

Gene Summary: This gene was first identified in a study of human esophageal squamous cell carcinoma tissues. Levels of both the message and protein are reduced in carcinoma samples. In adult human tissues, this gene is expressed in the the esophagus, stomach, small intestine, colon and placenta. Alternatively spliced transcript variants that encode the same protein have been identified. [provided by RefSeq, Jun 2012]

Product images:



Circular map for RC219072



Western blot validation of overexpression lysate (Cat# [LY405153]) using anti-DDK antibody (Cat# [TA50011-100]). Left: Cell lysates from untransfected HEK293T cells; Right: Cell lysates from HEK293T cells transfected with RC219072 using transfection reagent MegaTran 2.0 (Cat# [TT210002]).