

Product datasheet for **RC219069**

TNNI3K (NM_015978) Human Tagged ORF Clone

Product data:

Product Type:	Expression Plasmids
Product Name:	TNNI3K (NM_015978) Human Tagged ORF Clone
Tag:	Myc-DDK
Symbol:	TNNI3K
Synonyms:	CARK; CCDD
Mammalian Cell Selection:	Neomycin
Vector:	pCMV6-Entry (PS100001)
E. coli Selection:	Kanamycin (25 ug/mL)



[View online »](#)

ORF Nucleotide Sequence:

>RC219069 ORF sequence
 Red=Cloning site Blue=ORF Green=Tags(s)

TTTTGTAATACGACTCACTATAGGGCGGCCGGGAATTCGTCGACTGGATCCGGTACCGAGGAGATCTGCC
 GCC**CGGATCGCC**

ATGGGAAATTATAAATCTAGACCAACCCAACTTGTACTGATGAATGGAAGAAAAAGTCAGTGAATCAT
 ATGTTATCACAATAGAAAGATTAGAAGATGACCTGCAGATCAAGGAAAAAGAACTGACAGAACTAAGGAA
 TATATTTGGCTCTGATGAAGCCTTCAGTAAAGTCAATTTAAATTACCGCACTGAAAATGGGCTGTCTCTA
 CTTCAATTTATGTTGCATTTGTGGAGGCAAGAAATCACATATTCGAACTCTTATGTTGAAAGGGCTCCGCC
 CATCTCGACTGACAAGAAATGGATTTACAGCCTTGCATTTAGCAGTTTACAAGGATAATGCAGAATTGAT
 CACTTCTCTGCTTACAGTGGAGCTGATATACAGCAGTTGGATACGGTGGCCTCACTGCCCTCCATATT
 GCTACAATAGCTGGCCACCTAGAGGCTGCTGATGTGCTGTTGCAACATGGAGCTAATGTCAATATCAAG
 ATGCAGTTTTTTTCACTCCATTGCATATTGCAGCGTACTATGGACATGAACAGGTAACCTCGCCTTTTT
 GAAATTTGGTGCATGTAATGTAAGTGGTGAAGTTGGAGATAGACCCCTCCACCTAGCATCTGCAAAA
 GGATTCCTGAATATTGCAAACTCTTGATGGAAGAAGGCAGAAAGCAGATGTGAATGCTCAAGATAATG
 AAGACCATGTCCCACTCCATTTCTGTTCTCGATTTGGACACCATGATATAGTTAAGTATCTGCTGCAAA
 TGATTTGGAAGTTCAACCTCATGTTGTTAATATCTATGGAGATACCCCTTACACCTGGCATGCTACAAT
 GGCAAAATTTGAAGTTGCCAAGGAAATCATCCAATATCAGGAACAGAAAGTCTGACTAAGGAAAACATCT
 TCAGTGAACAGCTTTTCATAGTCTTGTACCTATGGCAAGAGCATTGACCTAGTCAAATTTCTTCTTGA
 TCAGAATGTCATAAACATCAACCACCAAGGAAGGGATGGGCACACTGGATTACACTCTGCTTGTACCAC
 GGTACATTCGCCTGGTTCAGTTCTTACTGGATAATGGAGCTGATATGAATCTAGTGGCTGTGATCCCA
 GCAGGCTAGTGGTAAAAAGATGAGCAGACATGTTTATGTTGGGCTTATGAAAAAGGGCAGTGCAT
 TGTACACTCCTGAAGCATTATAAGAGACCACAAGATGAATTGCCCTGTAAATGAATATTCTCAGCCTGGA
 GGAGATGGCTCCTATGTGCTGTTCCATCACCTTGGGGAAGATTAAGCATGACAAAAGAGAAGGCAG
 ATATTCTCCTCCTAAGAGCTGGATTGCCTTACATTTCCATCTTCACTCTCAGAAATTGAGTTCATGA
 GATTATTGGCTCAGGTTCTTTGGGAAAGTATATAAAGGACGATGCAGAAATAAATAGTGGCTATAAAA
 CGTTATCGAGCCAATACCTACTGCTCCAAGTCAAGTGTGGATATGTTTGGCCGAGAGGTGCCATTCTCT
 GCCAGCTCAATCATCCCTGCGTAATTCAGTTTGTGGTGTCTGCTTGAATGATCCAGCCAGTTTGGCAT
 TGTCACTCAATACATATCAGGGGTTCTCTGTTCTCCCTCCTTCAAGCAGAGAGGATTCTTGATTTG
 CAGTCTAAATTAATTATTCAGTAGATGTTGCCAAGGCATGGAGTACCTTCAACCTGACACAGCCAA
 TTATACATCGTGACTTGAACAGTACAATATTCTTCTATGAGGATGGGCATGCTGTGGTGGCAGATTT
 TGGAGAATCAAGATTTCTACAGTCTCTGGATGAAGACAACATGACAAAACAACCTGGGAACCTCCGTTGG
 ATGGCTCCTGAGGTGTTACGCAGTGCCTCGGTACACCATCAAAGCAGATGCTTTCAGCTATGCTCTGT
 GTCTGTGGGAAATTTCACTGGCGAAATTCATTTCGCTCATCTCAAGCCAGCGGCTGCGGCAGCAGACAT
 GGCTTACCACCACATCAGACCTCCCATTTGGCTATTCCATTCCAAGCCATATCATCTCTGCTGATACGA
 GGGTGAACGCATGTCTGAAGGAAGACCCGAATTTCTGAAGTTGTCATGAAGTTAGAAGAGTGTCTCT
 GCAACATTGAGCTGATGTCTCTGCATCAAGTAACAGCAGTGGTCTCTCTCACCTTCTTCTTCTTGA
 TTGCCTGGTGAACCGGGGAGACCTGGCCGGAGTCAATGTGGCAGCATTAAAGAGTCTTTTGAATTGGAA
 TATGCTCTAAATGCAAGTCTATGCTGCTTTGTCCAAAGTGGTGGACAATATTCTCTCAAGGCTGT
 CTTTGGAGGAGATGAAAAGAAGTCTTCAATACACACCCATTGACAAATATGGCTATGTATCCGATCCCAT
 GAGCTCAATGCATTTTCTTCTTCCGAAATAGTAGCAGCTTTGAGGACAGCAGC

ACGCGTACGCGGCCGCTCGAGCAGAACTCATCTCAGAAGAGGATCTGGCAGCAAATGATATCCTGGATT
 ACAAGGATGACGACGATAAGGTTTAA

Protein Sequence: >RC219069 protein sequence
Red=Cloning site Green=Tags(s)

MGNYKSRPTQTCTDEWKKKVSSEYVITIERLEDDLQIKEKELTELRNIFGSDEAFSKVNLNYRTENGLSL
LHLCCICGGKKSHIRTLMLKGLRPSRLTRNGFTALHLAVYKDNAELITSLHSGADIQQVGYGGLTALHI
ATIAGHLEAADVLLQHGANVNIQDAVFFTPLHIAAAYYGHEQVTRLLLKFGADVNVSGEVGDRPLHLASAK
GFLNIAKLLMEEGSKADVNAQDNEDHVPLHFCSRFGHHDIVKYLLQSDLEVQPHVVNIYGDTPHLACYN
GKFEVAKEIIQISGTESLTKENIFSETAFHSACTYGKSIDLVKFLLDQNVININHQGRDGHGTGLHSACYH
GHIRLVQFLLDNGADMNLVACDPSRSSGKDEQTCMLMWAYEKGHDAIVTLLKHYKRPQDELPCNEYSQPG
GDGSYVSVPSPLGKIKSMTKEKADILLRAGLPSHFHLQLSEIEFHEIIGSGSFGKVYKGRCRNKIVAIAIK
RYRANTYCSKSDVDMFCREVSILCQLNHPCVIQFVGACLNPSQFAIVTQYISGGSLFSLLEQKRILD
QSKLIIADVAKGMEYLHNLTPQIIHRDLNSHNILLYEDGHAVVADFGESRFLQSLDEDNMTKQPGNLRW
MAPEVFTQCTRYTIKADVFSYALCLWEILTGEIPFAHLKPAAAAADMAYHHIRPPIGYSIPKPISSLLIR
GWNACPEGRPEFSEVVMKLEELCNIELMSPASSNSSGSLSPSSSDCLVNRGGPGRSHVAALRSRFELE
YALNARSYAALSQSAGQYSSQGLSLEEMKRSLQYTPIDKYGYVSDPMSSMHFHSRNSSSFEDSS

TRTRPLEQKLISEEDLAANDILDYKDDDDKV

Chromatograms: https://cdn.origene.com/chromatograms/mk6602_h05.zip

Restriction Sites: Sgfl-Mlul

Cloning Scheme:


ACCN: NM_015978

ORF Size: 2505 bp

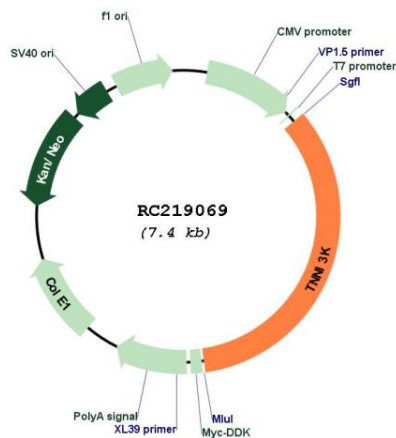
OTI Disclaimer: The molecular sequence of this clone aligns with the gene accession number as a point of reference only. However, individual transcript sequences of the same gene can differ through naturally occurring variations (e.g. polymorphisms), each with its own valid existence. This clone is substantially in agreement with the reference, but a complete review of all prevailing variants is recommended prior to use. [More info](#)

OTI Annotation: This clone was engineered to express the complete ORF with an expression tag. Expression varies depending on the nature of the gene.

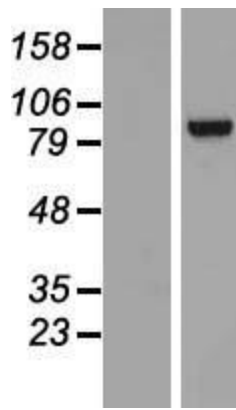
Components: The ORF clone is ion-exchange column purified and shipped in a 2D barcoded Matrix tube containing 10ug of transfection-ready, dried plasmid DNA (reconstitute with 100 ul of water).

Reconstitution Method:	<ol style="list-style-type: none">1. Centrifuge at 5,000xg for 5min.2. Carefully open the tube and add 100ul of sterile water to dissolve the DNA.3. Close the tube and incubate for 10 minutes at room temperature.4. Briefly vortex the tube and then do a quick spin (less than 5000xg) to concentrate the liquid at the bottom.5. Store the suspended plasmid at -20°C. The DNA is stable for at least one year from date of shipping when stored at -20°C.
RefSeq:	NM_015978.3
RefSeq Size:	3026 bp
RefSeq ORF:	2508 bp
Locus ID:	51086
UniProt ID:	Q59H18
Cytogenetics:	1p31.1
Domains:	pkinase, TyrKc, ANK, S_TKc
Protein Families:	Druggable Genome, Protein Kinase
MW:	92.9 kDa
Gene Summary:	This gene encodes a protein that belongs to the MAP kinase kinase kinase (MAPKKK) family of protein kinases. The protein contains ankyrin repeat, protein kinase and serine-rich domains and is thought to play a role in cardiac physiology. [provided by RefSeq, Sep 2012]

Product images:



Circular map for RC219069



Western blot validation of overexpression lysate (Cat# [LY414268]) using anti-DDK antibody (Cat# [TA50011-100]). Left: Cell lysates from untransfected HEK293T cells; Right: Cell lysates from HEK293T cells transfected with RC219069 using transfection reagent MegaTran 2.0 (Cat# [TT210002]).



Coomassie blue staining of purified TNNI3K protein (Cat# [TP319069]). The protein was produced from HEK293T cells transfected with TNNI3K cDNA clone (Cat# RC219069) using MegaTran 2.0 (Cat# [TT210002]).