

Product datasheet for RC219067

Persephin (PSPN) (NM_004158) Human Tagged ORF Clone

Product data:

Product Type: Expression Plasmids
Product Name: Persephin (PSPN) (NM_004158) Human Tagged ORF Clone
Tag: Myc-DDK
Symbol: Persephin
Synonyms: PSP
Mammalian Cell Selection: Neomycin
Vector: pCMV6-Entry (PS100001)
E. coli Selection: Kanamycin (25 ug/mL)
ORF Nucleotide Sequence: >RC219067 representing NM_004158
Red=Cloning site Blue=ORF Green=Tags(s)

TTTTGTAATACGACTCACTATAGGGCGGCCGGAATTCGTCGACTGGATCCGGTACCGAGGAGATCTGCC
GCC**CGATCGCC**

ATGGCCGTAGGGAAGTTCCTGCTGGGCTCCCTGCTGCTCCTGTCCCTGCAGCTGGGACAGGGCTGGGGCC
CCGATGCCCGTGGGGTCCCGTGGCCGATGGAGAGTTCTCGTCTGAACAGGTGGCAAAGGCTGGAGGGAC
CTGGCTGGGCACCCACCGCCCTTGCCCGCTGCGCCGAGCCCTGTCTGGTCCATGCCAGCTGTGGAGC
CTGACCCTGTCCGTGGCAGAGCTAGGCCTGGGCTACGCCTCAGAGGAGAAGGTCATCTCCGCTACTGCC
CCGGCAGCTGCCCGTGGTGGCCGACCCAGCATGGCCTGGCGCTGGCCGGCTGCAGGGCCAGGGCCG
AGCCACGGCGGGCCCTGCTGCCGGCCACTCGCTACACCGACGTGGCCTTCTCGATGACCGCCACCGC
TGGCAGCGGCTGCCCCAGCTCTCGCGGCTGCCTGCGGCTGTGGTGGC

ACGCGTACGCGGCCGCTCGAGCAGAACTCATCTCAGAAGAGGATCTGGCAGCAAATGATATCCTGGATT
ACAAGGATGACGACGATAAGGTTTAA

Protein Sequence: >RC219067 representing NM_004158
Red=Cloning site Green=Tags(s)

MAVGKFLGLSLLLLSLQLGQGWGPDARGVPVADGEFSSEQVAKAGGTWLGTHRPLARLRRALSGPCQLWS
LTL SVAELGLGYASEEKVIFRYCAGSCPRGARTQHGLALARLQGGRAHGGPCCRPTRYTDVAFLLDDRHR
WQRLPQLSAAACGGG

TRTRPLEQKLISEEDLAANDILDYKDDDDKV

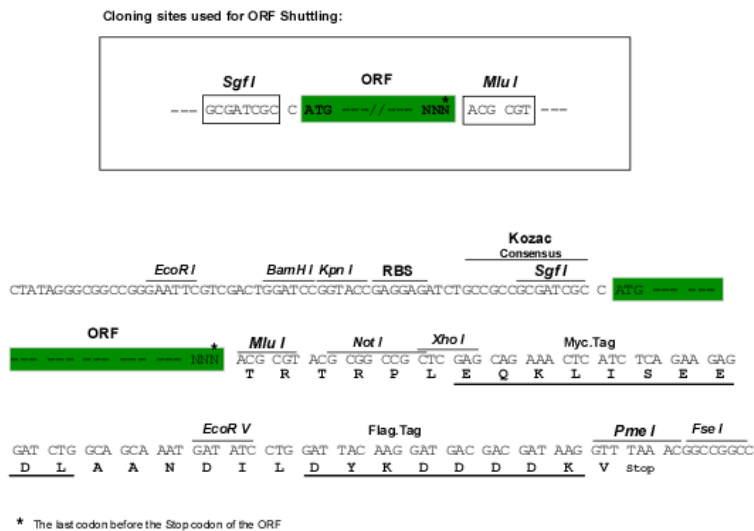
Chromatograms: https://cdn.origene.com/chromatograms/mk6266_g08.zip



[View online >](#)

Restriction Sites: SgfI-MluI

Cloning Scheme:



ACCN: NM_004158

ORF Size: 468 bp

OTI Disclaimer: Due to the inherent nature of this plasmid, standard methods to replicate additional amounts of DNA in *E. coli* are highly likely to result in mutations and/or rearrangements. Therefore, OriGene does not guarantee the capability to replicate this plasmid DNA. Additional amounts of DNA can be purchased from OriGene with batch-specific, full-sequence verification at a reduced cost. Please contact our customer care team at custsupport@origene.com or by calling 301.340.3188 option 3 for pricing and delivery.

The molecular sequence of this clone aligns with the gene accession number as a point of reference only. However, individual transcript sequences of the same gene can differ through naturally occurring variations (e.g. polymorphisms), each with its own valid existence. This clone is substantially in agreement with the reference, but a complete review of all prevailing variants is recommended prior to use. [More info](#)

OTI Annotation: This clone was engineered to express the complete ORF with an expression tag. Expression varies depending on the nature of the gene.

Components: The ORF clone is ion-exchange column purified and shipped in a 2D barcoded Matrix tube containing 10ug of transfection-ready, dried plasmid DNA (reconstitute with 100 ul of water).

Reconstitution Method:

1. Centrifuge at 5,000xg for 5min.
2. Carefully open the tube and add 100ul of sterile water to dissolve the DNA.
3. Close the tube and incubate for 10 minutes at room temperature.
4. Briefly vortex the tube and then do a quick spin (less than 5000xg) to concentrate the liquid at the bottom.
5. Store the suspended plasmid at -20°C. The DNA is stable for at least one year from date of shipping when stored at -20°C.

RefSeq: [NM_004158.3](#)

RefSeq Size: 471 bp

RefSeq ORF: 471 bp

Locus ID: 5623

UniProt ID: [O60542](#)

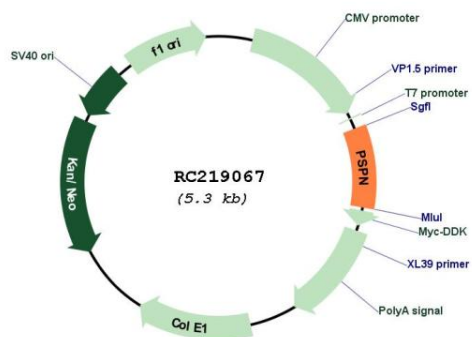
Cytogenetics: 19p13.3

Protein Families: Secreted Protein

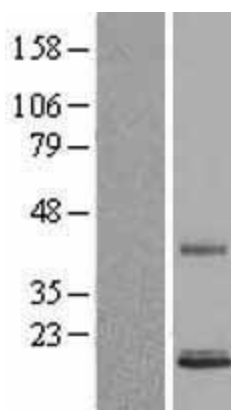
MW: 16.4 kDa

Gene Summary: This gene encodes a secreted ligand of the GDNF (glial cell line-derived neurotrophic factor) subfamily and TGF-beta (transforming growth factor-beta) superfamily of proteins. The encoded preproprotein is proteolytically processed to generate the mature protein. This protein signals through the RET receptor tyrosine kinase and a GPI-linked coreceptor, and promotes survival of neuronal populations. This protein may play a role in cell death, and nervous system development and function. Elevated expression of this gene has been observed in oral squamous cell carcinoma. [provided by RefSeq, Aug 2016]

Product images:



Circular map for RC219067



Western blot validation of overexpression lysate (Cat# [LY418175]) using anti-DDK antibody (Cat# [TA50011-100]). Left: Cell lysates from untransfected HEK293T cells; Right: Cell lysates from HEK293T cells transfected with RC219067 using transfection reagent MegaTran 2.0 (Cat# [TT210002]).