

## Product datasheet for RC219060

### MADCAM1 (NM\_130760) Human Tagged ORF Clone

#### Product data:

**Product Type:** Expression Plasmids  
**Product Name:** MADCAM1 (NM\_130760) Human Tagged ORF Clone  
**Tag:** Myc-DDK  
**Symbol:** MADCAM1  
**Synonyms:** MACAM1  
**Mammalian Cell Selection:** Neomycin  
**Vector:** pCMV6-Entry (PS100001)  
**E. coli Selection:** Kanamycin (25 ug/mL)  
**ORF Nucleotide Sequence:** >RC219060 representing NM\_130760  
 Red=Cloning site Blue=ORF Green=Tags(s)

TTTTGTAATACGACTCACTATAGGGCGGCCGGAATTCGTCGACTGGATCCGGTACCGAGGAGATCTGCC  
 GCC**CGCATCGCC**

ATGGATTCGGACTGGCCCTCCTGCTGGCGGGCTTCTGGGGCTCCTCCTCGGCCAGTCCCTCCAGGTGA  
 AGCCCCCTGCAGGTGGAGCCCCGGAGCCGGTGGTGGCCCTGGCCCTGGGCGCCTCGCGCCAGCTCACCTG  
 CCGCCTGGCCTGCGCGGACCGCGGGGCTCGGTGCAGTGGCGGGGCTGGACACCAGCCTGGGCGCGGTG  
 CAGTCGGACACGGGCCGAGCGTCTCACGTGCGCAACGCTCGCTGTCGGCGGGCCGGACCCGCGTGT  
 GCGTGGGCTCCTGCGGGGCGCACCTTCCAGCACACCGTGCAGTCTCTGTGTACGCTTCCCGGACCA  
 GCTGACCGTCTCCCCGGCAGCCCTGGTGCCTGGTACCCGGAGGTGGCCTGTACGGCCACAAAGTCACG  
 CCCGTGGACCCCAACGCGCTCTCCTTCTCCCTGCTCGTGGGGGCCAGGAAGTGGAGGGGGCGCAAGCCC  
 TGGGCCCGGAGGTGCAGGAGGAGGAGGAGGCCAGGGGGACGAGGACGTGCTGTTACAGGTGACAGA  
 GCGCTGGCGGCTGCCGCCCTGGGGACCCCTGTCCCGCCCGCCCTCTACTGCCAGGCCACGATGAGGCTG  
 CCTGGCTTGGAGCTCAGCCACCGCCAGGCCATCCCCGCTCTGCACAGCCCGACCTCCCCGGAGCCTCCCA  
 ACACCACCTCCCCGGAGCCTCCCAACACCACCTCCCCGGAGTCTCCCGACACCACCTCCCCGGAGCCTCC  
 CGACACCACCTCCCCGGAGCCTCCCGACAAGACCTCCCCGGAGCCCGCCCCAGCAGGGCTCCACACAC  
 ACCCCCAGGAGCCAGGCTCCACCAGACTCGCCGCCCTGAGATCTCCAGGCTGGGCCACGCAGGGGAG  
 AAGTGATCCCAACAGGCTCGTCCAACCTGCGGGTGACCAGTGCCTGGCGGCTCTGTGGACCAGTGC  
 GGTGCTGGGACTGCTGCTCCTGGCCTTGCCACCTATCACCTCTGGAAACGCTGCCGGCACCTGGTGTAG  
 GACGACACCCACCCAGGCTTCTCTGAGGCTTCTGCCACAGGTGTGGCCTGGGCTGGGTTAAGGGGGA  
 CCGGCCAGGTGGGATCAGCCCCCTCC

**ACGCGT**ACGCGGCCGCTCGAGCAGAAACTCATCTCAGAAGAGGATCTGGCAGCAATGATATCTGGATT  
 ACAAGGATGACGACGATAAGGTTTAA



[View online »](#)

**Protein Sequence:** >RC219060 representing NM\_130760  
Red=Cloning site Green=Tags(s)

MDFGLALLLAGLLGLLLQSLQVKPLQVEPPEPVVAVALGASRQLTCRLACADRGASVQWRGLDTSLGAV  
 QSDTGRSVLTVRNASLSAAGTRVCVGCSCGGRTFQHTVQLLVYAFDPQLTVSPAALVPGDPEVACTAHKVT  
 PVDPNALSFLLVGGQELEGAQALGPEVQEEEEEPQGEDVDLFRVTERWRLPPLGTPVPPALYQCQATMRL  
 PGLLESHRQAIIPVLHSPTSPEPPNTTSPEPPNTTSPEPDTTSPPEPDKTSPEPAPQQGSTH  
 TPRSPGSTRTRRPEISQAGPTQGEVIPTGSSKPADGQLPAALWTSsavLGLLLLALPTYHLWKRCRHLAE  
 DDTHPPASLRLLPQVSAWAGLRGTGQVGI SPS

TRTRPLEQKLISEEDLAANDILDYKDDDDKV

**Chromatograms:** [https://cdn.origene.com/chromatograms/mg3325\\_f07.zip](https://cdn.origene.com/chromatograms/mg3325_f07.zip)

**Restriction Sites:** SgfI-MluI

**Cloning Scheme:**



\* The last codon before the Stop codon of the ORF

**ACCN:** NM\_130760

**ORF Size:** 1146 bp

**OTI Disclaimer:** The molecular sequence of this clone aligns with the gene accession number as a point of reference only. However, individual transcript sequences of the same gene can differ through naturally occurring variations (e.g. polymorphisms), each with its own valid existence. This clone is substantially in agreement with the reference, but a complete review of all prevailing variants is recommended prior to use. [More info](#)

**OTI Annotation:** This clone was engineered to express the complete ORF with an expression tag. Expression varies depending on the nature of the gene.

**Components:** The ORF clone is ion-exchange column purified and shipped in a 2D barcoded Matrix tube containing 10ug of transfection-ready, dried plasmid DNA (reconstitute with 100 ul of water).

**Reconstitution Method:**

1. Centrifuge at 5,000xg for 5min.
2. Carefully open the tube and add 100ul of sterile water to dissolve the DNA.
3. Close the tube and incubate for 10 minutes at room temperature.
4. Briefly vortex the tube and then do a quick spin (less than 5000xg) to concentrate the liquid at the bottom.
5. Store the suspended plasmid at -20°C. The DNA is stable for at least one year from date of shipping when stored at -20°C.

**Note:** Plasmids are not sterile. For experiments where strict sterility is required, filtration with 0.22um filter is required.

**RefSeq:** [NM\\_130760.3](#)

**RefSeq Size:** 1546 bp

**RefSeq ORF:** 1149 bp

**Locus ID:** 8174

**UniProt ID:** [Q13477](#)

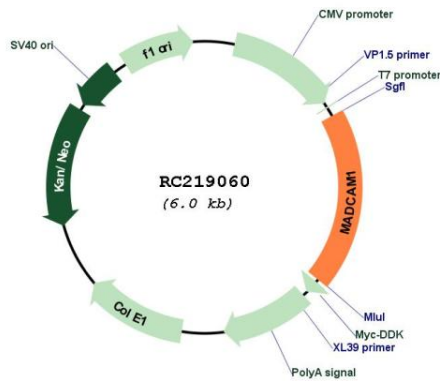
**Cytogenetics:** 19p13.3

**Protein Pathways:** Cell adhesion molecules (CAMs)

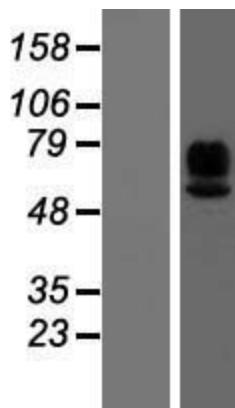
**MW:** 38.3 kDa

**Gene Summary:** The protein encoded by this gene is an endothelial cell adhesion molecule that interacts preferentially with the leukocyte beta7 integrin LPAM-1 (alpha4beta7), L-selectin, and VLA-4 (alpha4beta1) on myeloid cells to direct leukocytes into mucosal and inflamed tissues. It is a member of the immunoglobulin family and is similar to ICAM1 and VCAM1. At least seven alternatively spliced transcripts encoding different protein isoforms have been found for this gene, but the full-length nature of some variants has not been determined. [provided by RefSeq, Jul 2008]

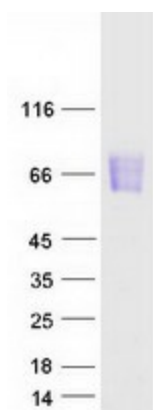
Product images:



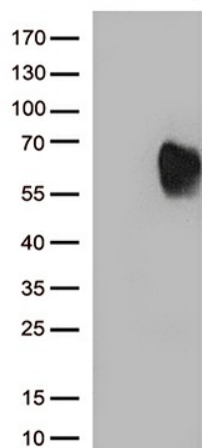
Circular map for RC219060



Western blot validation of overexpression lysate (Cat# [LY408927]) using anti-DDK antibody (Cat# [TA50011-100]). Left: Cell lysates from untransfected HEK293T cells; Right: Cell lysates from HEK293T cells transfected with RC219060 using transfection reagent MegaTran 2.0 (Cat# [TT210002]).



Coomassie blue staining of purified MADCAM1 protein (Cat# [TP319060]). The protein was produced from HEK293T cells transfected with MADCAM1 cDNA clone (Cat# RC219060) using MegaTran 2.0 (Cat# [TT210002]).



HEK293T cells were transfected with the pCMV6-ENTRY control (Cat# [PS100001], Left lane) or pCMV6-ENTRY MADCAM1 (Cat# RC219060, Right lane) cDNA for 48 hrs and lysed. Equivalent amounts of cell lysates (5 ug per lane) were separated by SDS-PAGE and immunoblotted with anti-MADCAM1 (Cat# [UM500105])(1:2000).