

## Product datasheet for RC219052

### LDHAL6A (NM\_144972) Human Tagged ORF Clone

#### Product data:

Product Type:	Expression Plasmids
Product Name:	LDHAL6A (NM_144972) Human Tagged ORF Clone
Tag:	Myc-DDK
Symbol:	LDHAL6A
Synonyms:	LDH6A
Mammalian Cell Selection:	Neomycin
Vector:	pCMV6-Entry (PS100001)
E. coli Selection:	Kanamycin (25 ug/mL)
ORF Nucleotide Sequence:	>RC219052 representing NM_144972 Red=Cloning site Blue=ORF Green=Tags(s)

TTTTGTAATACGACTCACTATAGGGCGGCCGGAATTCGTCGACTGGATCCGGTACCGAGGAGATCTGCC  
GCC**CGCATCGCC**

ATGGCAACTATCAAGAGTGAACCTATTAAGAATTCGCGGAAGAGGAGGCCATTCACACAATAAGATCT  
CCATTGTAGGAAGTGGATCGGTTGGTGTGGCTTGCTATCAGCATCTTATTAAGGTTTGAGTGATGA  
ACTTGCCTTGTGGATGTTGATGAAGGCAAACTGAAGGGTGAACAATGGATCTCAACATGGCAGCCCT  
TTTATGAAAATGCCAAATATTGTCTCCAGCAAAGATTACCTGGTCACTGCAAACCTCAATCTAGTGATTA  
TCACAGCAGGTGCAGCCAGAAAAAGGAGAAACACGCCTTGATTTAGTCCAGCGAAATGTATCCATCTT  
TAAATTAATGATTCCCAATATTACCCAGTACAGTCCTCACTGCAAACCTGTTATTGTTACTAATCCAGTG  
GATATCTTAACCTATGTAGCCTGGAAGTTGAGTGGATTTCCAAAAACCGTGTATTGGAAGTGGTTGTA  
ATCTGGACTCTGCTCGTTTCGTTACTTTATTGGGCAAAGGCTTGGCATCCACTCTGAAAGCTGTATGG  
GCTGATCCTTGGAGAGCATGGCGACTCAAGTGTTCCTGTGTGGAGTGGTGTGAACATTGCTGGCGTCCCT  
CTGAAGGATCTGAACCCAGATATAGGAAGTATAAAGATCCTGAGCAGTGGGAAAATGTCCAAAAAAG  
TGATTTCCAGTGGCTATGAGATGGTCAAATGAAAGGTTATACTTCTTGGGGCATTAGCCTATCTGTAGC  
TGATTTAACAGAAAGTATTTTGAAGAATCTTAGGAGAGTGCATCCAGTTTCTACCCTAAGTAAGGGCCTC  
TATGGAATAAATGAAGACATATTCCTTAGTGTCCCATGTATCCTGGGAGAGAATGGTATCACAGACCTCA  
TAAAAGTAAAAGTAACTGACTCTTGAAGAGGAGGCCTGCTTGCAAAGAGTGCAGAAACACTTTGGGAAATTC  
GAAGGAGCTCAAGCTT

**ACGCGT**ACGCGGCCGCTCGAGCAGAAACTCATCTCAGAAGAGGATCTGGCAGCAAATGATATCCTGGATT  
ACAAGGATGACGACGATAAGGTTTAA



[View online »](#)

**Protein Sequence:** >RC219052 representing NM\_144972  
Red=Cloning site Green=Tags(s)

MATIKSELIKNFAEEEAIIHNNKISIVGTGSVGVACAI SILLKGLSDELVLVDVDEGKLGKGETMDLQHGSP  
 FMKMPNIVSSKDYLVTANSLV IITAGARQKKGETRLDLVQRNVSIFKLMIPNITQYSPHCKLLIVTNPV  
 DILTYVAVKLSGFPKNRVIGSGCNLDSARFRYF IGQRLGIHSESCHGLILGEHGDSSVPVWVSGVNIAGVP  
 LKDLNPDIGTDKDPQWENVHKKV I SSGYEMVKMKGYTSWGISLSVADL TESILKNLRRVHPVSTLSKGL  
 YGINEDIFLSVPCILGENGITDLIKVKLTLEEEACLQKSAETLWEIQKELKL

TRTRPLEQKLISEEDLAANDILDYKDDDDKV

**Chromatograms:** [https://cdn.origene.com/chromatograms/mk8022\\_f02.zip](https://cdn.origene.com/chromatograms/mk8022_f02.zip)

**Restriction Sites:** SgfI-MluI

**Cloning Scheme:**

Cloning sites used for ORF Shuttling:



\* The last codon before the Stop codon of the ORF

**ACCN:** NM\_144972

**ORF Size:** 996 bp

**OTI Disclaimer:** The molecular sequence of this clone aligns with the gene accession number as a point of reference only. However, individual transcript sequences of the same gene can differ through naturally occurring variations (e.g. polymorphisms), each with its own valid existence. This clone is substantially in agreement with the reference, but a complete review of all prevailing variants is recommended prior to use. [More info](#)

**OTI Annotation:** This clone was engineered to express the complete ORF with an expression tag. Expression varies depending on the nature of the gene.

**Components:** The ORF clone is ion-exchange column purified and shipped in a 2D barcoded Matrix tube containing 10ug of transfection-ready, dried plasmid DNA (reconstitute with 100 ul of water).

**Reconstitution Method:**

1. Centrifuge at 5,000xg for 5min.
2. Carefully open the tube and add 100ul of sterile water to dissolve the DNA.
3. Close the tube and incubate for 10 minutes at room temperature.
4. Briefly vortex the tube and then do a quick spin (less than 5000xg) to concentrate the liquid at the bottom.
5. Store the suspended plasmid at -20°C. The DNA is stable for at least one year from date of shipping when stored at -20°C.

**RefSeq:** [NM\\_144972.5](#)

**RefSeq Size:** 2520 bp

**RefSeq ORF:** 999 bp

**Locus ID:** 160287

**UniProt ID:** [Q6ZMR3](#)

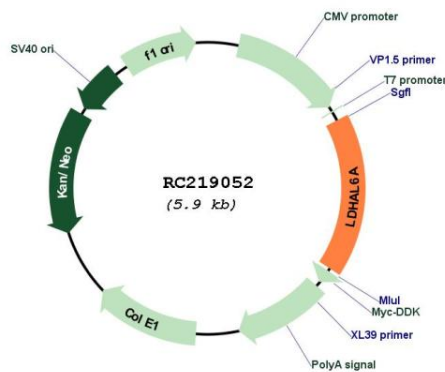
**Cytogenetics:** 11p15.1

**Protein Pathways:** Cysteine and methionine metabolism, Glycolysis / Gluconeogenesis, Metabolic pathways, Propanoate metabolism, Pyruvate metabolism

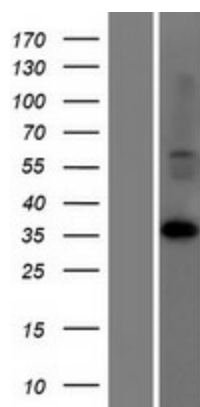
**MW:** 36.3 kDa

**Gene Summary:** Displays an lactate dehydrogenase activity. Significantly increases the transcriptional activity of JUN, when overexpressed.[UniProtKB/Swiss-Prot Function]

### Product images:



Circular map for RC219052



Western blot validation of overexpression lysate (Cat# [LY408113]) using anti-DDK antibody (Cat# [TA50011-100]). Left: Cell lysates from untransfected HEK293T cells; Right: Cell lysates from HEK293T cells transfected with RC219052 using transfection reagent MegaTran 2.0 (Cat# [TT210002]).