

Product datasheet for **RC219044**

Gasdermin like (GSDMB) (NM_001042471) Human Tagged ORF Clone

Product data:

| | |
|---------------------------|--|
| Product Type: | Expression Plasmids |
| Product Name: | Gasdermin like (GSDMB) (NM_001042471) Human Tagged ORF Clone |
| Tag: | Myc-DDK |
| Symbol: | Gasdermin like |
| Synonyms: | GSDMB-1; GSDML; PP4052; PRO2521 |
| Mammalian Cell Selection: | Neomycin |
| Vector: | pCMV6-Entry (PS100001) |
| E. coli Selection: | Kanamycin (25 ug/mL) |
| ORF Nucleotide Sequence: | >RC219044 representing NM_001042471 Red=Cloning site Blue=ORF Green=Tags(s) |

TTTTGTAATACGACTCACTATAGGGCGGCCGGAATTCGTCGACTGGATCCGGTACCGAGGAGATCTGCC
GCC**CGATCGC**

ATGTTTCAGCGTATTTGAGGAAATCACAAGAATTGTAGTTAAGGAGATGGATGCTGGAGGGGATATGATTG
CCGTTAGAAGCCTTGTTGATGCTGATAGATTCCGCTGCTTCCATCTGGTGGGGGAGAAGAGAAGCTTTCTT
TGGATGCCGGCACTACACAACAGGCCTCACCTGATGGACATTCTGGACACAGATGGGGACAAGTGGTTA
GATGAAGTGGATTCTGGGCTCAAGGTCAAAGGCTGAGTTTCAAATTCTGGATAATGTAGACTCAACGG
GAGAGTTGATAGTGAGATTACCCAAAGAAATAACAATTTAGGCAGTTTCCAGGGCTTCCACCATCAGAA
AATCAAGATATCGGAGAACCGGATATCCAGCAGTATCTGGCTACCTTGAAAACAGGAAGCTGAAGAGG
GAATACCTTTTCATTCCGATCAATTAATACGAGAGAAAACCTGTATCTGGTGACAGAAAACCTGGAGA
CGGTAAAGGAGGAAACCTGAAAAGCGACCGGCAATATAAATTTGGAGCCAGATCTCTCAGGGCCATCT
CAGCTATAAACACAAGGGCCAAAGGGAAGTGACCATCCCCCAATCGGGTCTGAGCTATCGAGTAAAG
CAGCTTGCTTCCCCAACAGGAGACGATGAAGAAGGATGGTGCTTCATCCTGTTTAGGAAAGTCTTTGG
GTTCCGAGGATTCAGAAACATGAAGGAGAAGTTGGAGGACATGGAGAGTGCTCAAGGACCTGACAGA
GGAGAAGAGAAAAGATGTGCTAACTCCCTCGCTAAGTGCCTCGCAAGGAGGATATTGGCAGGATCTA
GAGCAAAGAGTATCTGAGGTCTGATTTCCGGGAGCTACACATGGAGGACCCAGACAAGCCTCTCTTAA
GCAGCCTTTTAAATGCTGCTGGGGTCTTGGTAGAAGCGCGTGCAAAAGCCATTCTGGACTTCTGGATGC
CCTGCTAGAGCTGTCTGAAGAGCAGCAGTTTGTGGCTGAGGCCCTGGAGAAGGGGACCCTTCTCTGTTG
AAGGACCAGGTGAAATCTGTCTGAGCAGAACTGGGATGAGCTGGCCAGCAGTCTCTGACATGGACT
ATGACCTGAGGCACGAATTCTGTGCGCTGTATGTTGTTGTCTCTATCCTGCTGGAGCTGGCTGAGGG
GCCTACCTCTGTCTTTCC

ACGCGTACGCGGCGGCTCGAGCAGAAACTCATCTCAGAAGAGGATCTGGCAGCAATGATATCTGGATT
ACAAGGATGACGACGATAAGGTTTAA



[View online »](#)

Protein Sequence: >RC219044 representing NM_001042471
 Red=Cloning site Green=Tags(s)

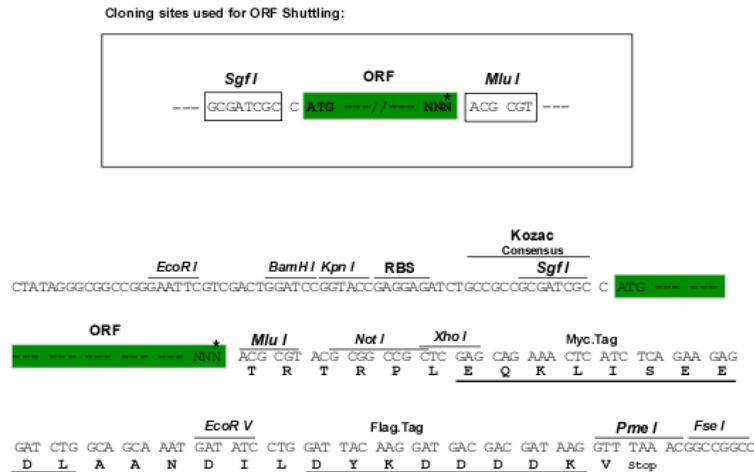
MFSVFEEITRIVVKEMDAGGDMIAVRSLVDADRFRCHLVGEKRTFFGCRHYTTGLTMDILDTGDKWL
 DELDSGLQGQKAEFQILDNDVSTGELIVRLPKEITISGSFQGFHHQKIKISENRISQQYLATLENRKLKR
 ELPFSSRSINTRENLYLVTETLETVKEETLKSDRQYKFSQISQGHLSYKHKGQREVTIPPNRVLSYRVK
 QLVFPNKETMKKGASSCLGKSLGSEDSRNMKEKLEDMESVLKDLTEEKRKDVLSLAKCLGKEDIRQDL
 EQRVSEVLISGELHMEDPKPLSSLFNAAGVLVEARAKAILDFLDALLELSEEQQFVAEAEKGTLP
 KDQVKSVMENWDELASSPPDMYDPEARILCALYVVVSILLELAEGPTSVSS

TRTRPLEQKLISEEDLAANDILDYKDDDDKV

Restriction Sites:

SgfI-MluI

Cloning Scheme:



ACCN: NM_001042471

ORF Size: 1209 bp

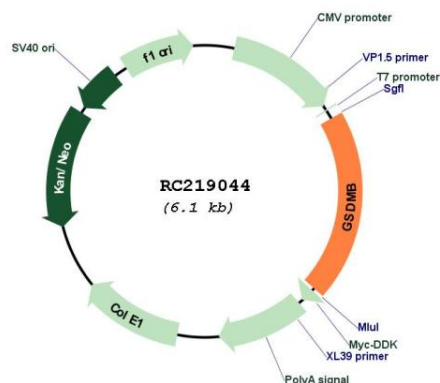
OTI Disclaimer: Due to the inherent nature of this plasmid, standard methods to replicate additional amounts of DNA in E. coli are highly likely to result in mutations and/or rearrangements. Therefore, OriGene does not guarantee the capability to replicate this plasmid DNA. Additional amounts of DNA can be purchased from OriGene with batch-specific, full-sequence verification at a reduced cost. Please contact our customer care team at custsupport@origene.com or by calling 301.340.3188 option 3 for pricing and delivery.

The molecular sequence of this clone aligns with the gene accession number as a point of reference only. However, individual transcript sequences of the same gene can differ through naturally occurring variations (e.g. polymorphisms), each with its own valid existence. This clone is substantially in agreement with the reference, but a complete review of all prevailing variants is recommended prior to use. [More info](#)

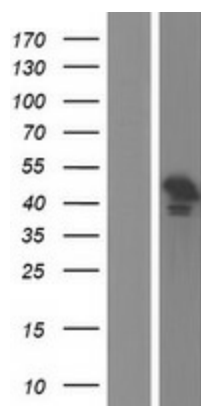
OTI Annotation: This clone was engineered to express the complete ORF with an expression tag. Expression varies depending on the nature of the gene.

| | |
|-------------------------------|---|
| Components: | The ORF clone is ion-exchange column purified and shipped in a 2D barcoded Matrix tube containing 10ug of transfection-ready, dried plasmid DNA (reconstitute with 100 ul of water). |
| Reconstitution Method: | <ol style="list-style-type: none"> 1. Centrifuge at 5,000xg for 5min. 2. Carefully open the tube and add 100ul of sterile water to dissolve the DNA. 3. Close the tube and incubate for 10 minutes at room temperature. 4. Briefly vortex the tube and then do a quick spin (less than 5000xg) to concentrate the liquid at the bottom. 5. Store the suspended plasmid at -20°C. The DNA is stable for at least one year from date of shipping when stored at -20°C. |
| Note: | Plasmids are not sterile. For experiments where strict sterility is required, filtration with 0.22um filter is required. |
| RefSeq: | <u>NM_001042471.1</u> , <u>NP_001035936.1</u> |
| RefSeq Size: | 1578 bp |
| RefSeq ORF: | 1212 bp |
| Locus ID: | 55876 |
| UniProt ID: | <u>Q8TAX9</u> |
| Cytogenetics: | 17q21.1 |
| MW: | 45.6 kDa |
| Gene Summary: | This gene encodes a member of the gasdermin-domain containing protein family. Other gasdermin-family genes are implicated in the regulation of apoptosis in epithelial cells, and are linked to cancer. Alternative splicing and the use of alternative promoters results in multiple transcript variants. Additional variants have been described, but they are candidates for nonsense-mediated mRNA decay (NMD) and are unlikely to be protein-coding. [provided by RefSeq, Nov 2016] |

Product images:



Circular map for RC219044



Western blot validation of overexpression lysate (Cat# [LY420925]) using anti-DDK antibody (Cat# [TA50011-100]). Left: Cell lysates from untransfected HEK293T cells; Right: Cell lysates from HEK293T cells transfected with RC219044 using transfection reagent MegaTran 2.0 (Cat# [TT210002]).