

## Product datasheet for **RC219038**

### **CMTM1 (NM\_181268) Human Tagged ORF Clone**

#### Product data:

**Product Type:** Expression Plasmids  
**Product Name:** CMTM1 (NM\_181268) Human Tagged ORF Clone  
**Tag:** Myc-DDK  
**Symbol:** CMTM1  
**Synonyms:** CKLFH; CKLFH1; CKLFSF1  
**Mammalian Cell Selection:** Neomycin  
**Vector:** pCMV6-Entry (PS100001)  
**E. coli Selection:** Kanamycin (25 ug/mL)  
**ORF Nucleotide Sequence:** >RC219038 representing NM\_181268  
**Red=Cloning site Blue=ORF Green=Tags(s)**

TTTTGTAATACGACTCACTATAGGGCGGCCGGAATTCGTCGACTGGATCCGGTACCGAGGAGATCTGCC  
GCC**CGATCGCC**

ATGGATCCTGAACACGCCAAACCTGAGTCATCCGAGGCACCTTCAGGGAACCTGAAACAACCGGAGACTG  
CCGCAGCCCTGGCAAGTAGCGGCAGCGTAGTGAGTTCTGTACCCAAGGCACAGCGCAACATCTCAGCGAA  
GACCGCACCCCGAAGCACCCCGCAGTCTCAATTCGCAGTGCGCAGTCCGCAGCCGCCGCACGTCCCCAA  
GGCAGTGAGGGCACCGCACCCCTCAAGGAAAGCCACCACACGCCACCCCAAGCCACACTCCCACCC  
CCACGCCCTCTGCACACACTGAATCCAACTCTTAAATGAGATGGCGATCAAAGAGCGCGTGGAGGGCCG  
AGCCAAAGTCCCGTACAAATTCAGGACAGCCTCAAACGTTTCTCCTTCTCGCCACTGGAATGTTGAAG  
ATCCTGAGACTGAGTCTTATCTTAGGAGCATTAGCTTGTTCATCATCACCCAAGCCAATGAGTCATTTA  
TAACAATCACAAGTCTGGAAATCTGCATTGTCGTTTTTTTTATTCTAATATATGTGCTAACCCCTTACCA  
CTTGCTGACCTATTTACATTGGCCCTTACTTGATCTTACCAACAGTATCATTACAGCTGTGTTCTTTCA  
GTAGTTGCCATCTTGCCATGCAAGAAAAGAAAAGAAGGCATTTACTCTATGTGGGGGGCGG

**ACGCGT**ACGCGGGCGCTCGAGCAGAACTCATCTCAGAAGAGGATCTGGCAGCAATGATATCCTGGATT  
ACAAGGATGACGACGATAAGGTTTAA



[View online »](#)

**Protein Sequence:** >RC219038 representing NM\_181268  
 Red=Cloning site Green=Tags(s)

MDPEHAKPESEAPSGNLKQPETAALASSGSVSSVPAQQRNISAKTAPRKHPAVSIRSAQSAARAPQ  
 GSEGTAPSRKATTRPPPKPTLPPTPSAHTESKLLNEMAIKERVEGRAKVPYKFRDSLKRFSPPTGMLK  
 ILRLSLILGALACFIITQANESFITITSLEICIVVFFILYVLLTHHLLTYLHWPLLDLNSIITAVFLS  
 VVAILAMQEKKRRHLLLYVGGRR

TRTRPLEQKLISEEDLAANDILDYKDDDDKV

**Chromatograms:** [https://cdn.origene.com/chromatograms/mk8013\\_d09.zip](https://cdn.origene.com/chromatograms/mk8013_d09.zip)

**Restriction Sites:** SgfI-MluI

**Cloning Scheme:**



**ACCN:** NM\_181268

**ORF Size:** 693 bp

**OTI Disclaimer:** The molecular sequence of this clone aligns with the gene accession number as a point of reference only. However, individual transcript sequences of the same gene can differ through naturally occurring variations (e.g. polymorphisms), each with its own valid existence. This clone is substantially in agreement with the reference, but a complete review of all prevailing variants is recommended prior to use. [More info](#)

**OTI Annotation:** This clone was engineered to express the complete ORF with an expression tag. Expression varies depending on the nature of the gene.

**Components:** The ORF clone is ion-exchange column purified and shipped in a 2D barcoded Matrix tube containing 10ug of transfection-ready, dried plasmid DNA (reconstitute with 100 ul of water).

**Reconstitution Method:**

1. Centrifuge at 5,000xg for 5min.
2. Carefully open the tube and add 100ul of sterile water to dissolve the DNA.
3. Close the tube and incubate for 10 minutes at room temperature.
4. Briefly vortex the tube and then do a quick spin (less than 5000xg) to concentrate the liquid at the bottom.
5. Store the suspended plasmid at -20°C. The DNA is stable for at least one year from date of shipping when stored at -20°C.

**RefSeq:** [NM\\_181268.3](#)

**RefSeq Size:** 1065 bp

**RefSeq ORF:** 696 bp

**Locus ID:** 113540

**UniProt ID:** [Q8IZ96](#)

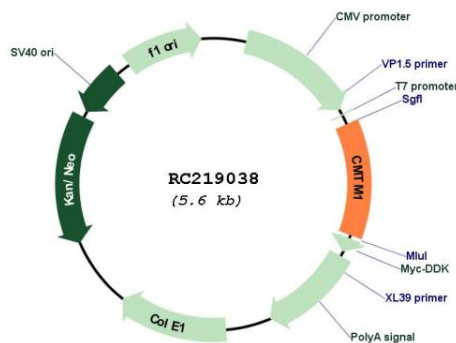
**Cytogenetics:** 16q21

**Protein Families:** Transmembrane

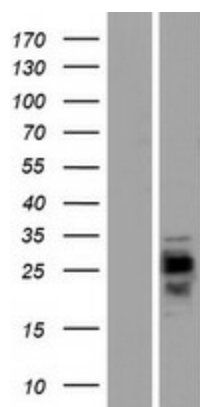
**MW:** 24.9 kDa

**Gene Summary:** This gene belongs to the chemokine-like factor gene superfamily, a novel family that is similar to the chemokine and the transmembrane 4 superfamilies of signaling molecules. The protein encoded by this gene may play an important role in testicular development. Alternatively spliced transcript variants encoding different isoforms have been identified. Naturally occurring read-through transcription occurs between this locus and the neighboring locus CKLF (chemokine-like factor).[provided by RefSeq, Feb 2011]

### Product images:



Circular map for RC219038



Western blot validation of overexpression lysate (Cat# [LY405809]) using anti-DDK antibody (Cat# [TA50011-100]). Left: Cell lysates from untransfected HEK293T cells; Right: Cell lysates from HEK293T cells transfected with RC219038 using transfection reagent MegaTran 2.0 (Cat# [TT210002]).