

## Product datasheet for **RC219036L1V**

### **KAT3A / CBP (CREBBP) (NM\_004380) Human Tagged ORF Clone Lentiviral Particle**

#### **Product data:**

Product Type:	Lentiviral Particles
Product Name:	KAT3A / CBP (CREBBP) (NM_004380) Human Tagged ORF Clone Lentiviral Particle
Symbol:	KAT3A / CBP
Synonyms:	CBP; KAT3A; MKHK1; RSTS; RSTS1
Mammalian Cell Selection:	None
Vector:	pLenti-C-Myc-DDK (PS100064)
Tag:	Myc-DDK
ACCN:	NM_004380
ORF Size:	7326 bp
ORF Nucleotide Sequence:	The ORF insert of this clone is exactly the same as(RC219036).
OTI Disclaimer:	The molecular sequence of this clone aligns with the gene accession number as a point of reference only. However, individual transcript sequences of the same gene can differ through naturally occurring variations (e.g. polymorphisms), each with its own valid existence. This clone is substantially in agreement with the reference, but a complete review of all prevailing variants is recommended prior to use. <a href="#">More info</a>
OTI Annotation:	This clone was engineered to express the complete ORF with an expression tag. Expression varies depending on the nature of the gene.
RefSeq:	<a href="#">NM_004380.1</a>
RefSeq Size:	8694 bp
RefSeq ORF:	7329 bp
Locus ID:	1387
UniProt ID:	<a href="#">Q92793</a>
Cytogenetics:	16p13.3
Domains:	zf-TAZ, ZnF_ZZ, BROMO, KIX
Protein Families:	Druggable Genome



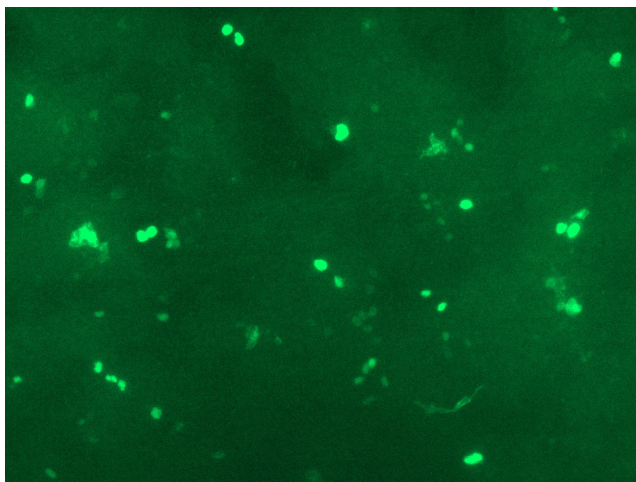
[View online »](#)

**Protein Pathways:** Adherens junction, Cell cycle, Huntington's disease, Jak-STAT signaling pathway, Long-term potentiation, Melanogenesis, Notch signaling pathway, Pathways in cancer, Prostate cancer, Renal cell carcinoma, TGF-beta signaling pathway, Wnt signaling pathway

**MW:** 265.2 kDa

**Gene Summary:** This gene is ubiquitously expressed and is involved in the transcriptional coactivation of many different transcription factors. First isolated as a nuclear protein that binds to cAMP-response element binding protein (CREB), this gene is now known to play critical roles in embryonic development, growth control, and homeostasis by coupling chromatin remodeling to transcription factor recognition. The protein encoded by this gene has intrinsic histone acetyltransferase activity and also acts as a scaffold to stabilize additional protein interactions with the transcription complex. This protein acetylates both histone and non-histone proteins. This protein shares regions of very high sequence similarity with protein p300 in its bromodomain, cysteine-histidine-rich regions, and histone acetyltransferase domain. Mutations in this gene cause Rubinstein-Taybi syndrome (RTS). Chromosomal translocations involving this gene have been associated with acute myeloid leukemia. Alternative splicing results in multiple transcript variants encoding different isoforms. [provided by RefSeq, Feb 2009]

### Product images:



[RC219036L1] was used to prepare Lentiviral particles using [TR30037] packaging kit. HEK293T cells were transduced with RC219036L1V particle to overexpress human CREBBP-Myc-DDK fusion protein.