

Product datasheet for RC219035

Clathrin light chain (CLTA) (NM_007096) Human Tagged ORF Clone

Product data:

Product Type:	Expression Plasmids
Product Name:	Clathrin light chain (CLTA) (NM_007096) Human Tagged ORF Clone
Tag:	Myc-DDK
Symbol:	Clathrin light chain
Synonyms:	LCA
Mammalian Cell Selection:	Neomycin
Vector:	pCMV6-Entry (PS100001)
E. coli Selection:	Kanamycin (25 ug/mL)
ORF Nucleotide Sequence:	>RC219035 representing NM_007096 Red=Cloning site Blue=ORF Green=Tags(s)

TTTTGTAATACGACTCACTATAGGGCGGCCGGAATTCGTCGACTGGATCCGGTACCGAGGAGATCTGCC
GCC**CGATCGCC**

ATGGCTGAGCTGGATCCGTTTCGGCGCCCTGCCGGCGCCCTGGCGGTCCCAGCGCTGGGAAACGGAGTGG
CCGGCGCCGGCGAAGAAGACCCGGCTGCGGCTTCTTGGCGCAGCAAGAGAGCGAGATTGCGGGCATCGA
GAACGACGAGGCTTCGCCATCCTGGACGGCGGCCCGCCCGGCCAGCCGCACGGCGAGCCGCGGGG
GGTCCGGATGCTGTTGATGGAGTAATGAATGGTGAATACTACCAGGAAAGTAATGGTCCAACAGACAGTT
ATGCAGCTATTTACAAGTGGATCGATTGCAGTCAGAGCCTGAAAGTATCCGTAATGGAGAGAAGAACA
AATGGAACGCTTGAAGCCCTTGATGCCAATTCTCGGAAGCAAGAAGCAGAGTGGAAAGAAAAGGCAATA
AAGGAGCTAGAAGATGGTATGCAAGACAGGACGAGCAGCTACAGAAAACAAAAGCAAACAACAGGGTGG
CAGATGAAGCTTTCTACAAACAACCCCTTCGCTGACGTGATTGGTTATGTCACAAACATAAACCATCCTTG
CTACAGCCTAGAACAGGCAGCAGAAGAAGCCTTTGTAATGACATTGACGAGTCGTCAGGCACTGAG
TGGGAACGGGTGGCCCGGCTGTGTGACTTTAACCCCAAGTCTAGCAAGCAGGCCAAAGATGTCTCCCGCA
TGCCTCAGTCTCATCTCCCTCAAGCAGGCCCGCTGGTGCAC

ACGCGTACGCGGCCGCTCGAGCAGAACTCATCTCAGAAGAGGATCTGGCAGCAAATGATATCCTGGATT
ACAAGGATGACGACGATAAGGTTTAA



[View online »](#)

Protein Sequence: >RC219035 representing NM_007096
Red=Cloning site Green=Tags(s)

MAELDPFGAPAGAPGGPALGNVAGAGEEDPAAFLAQQESEIAGIENDEAFAILDGGAPGPQPHGPEPPG
 GPDAVDGVMNGEYYQESNGPTDSYAAISQVDRLQSEPE SIRKWREEQMERLEALDANSRKQEA EWKEKAI
 KELEEYARQDEQLQKTKANNRVADEAFYKQPFADVIGYVTNINHPCYSLEQAAEEAFVNDIDESSPGTE
 WERVARLCDFNPKSSKQAKDVSRMRSVLISLKQAPLVH

TRTRPLEQKLISEEDLAANDILDYKDDDDKV

Chromatograms: https://cdn.origene.com/chromatograms/mk6475_c03.zip

Restriction Sites: SgfI-MluI

Cloning Scheme:

Cloning sites used for ORF Shuttling:



* The last codon before the Stop codon of the ORF

ACCN: NM_007096

ORF Size: 744 bp

OTI Disclaimer: The molecular sequence of this clone aligns with the gene accession number as a point of reference only. However, individual transcript sequences of the same gene can differ through naturally occurring variations (e.g. polymorphisms), each with its own valid existence. This clone is substantially in agreement with the reference, but a complete review of all prevailing variants is recommended prior to use. [More info](#)

OTI Annotation: This clone was engineered to express the complete ORF with an expression tag. Expression varies depending on the nature of the gene.

Components: The ORF clone is ion-exchange column purified and shipped in a 2D barcoded Matrix tube containing 10ug of transfection-ready, dried plasmid DNA (reconstitute with 100 ul of water).

Reconstitution Method:

1. Centrifuge at 5,000xg for 5min.
2. Carefully open the tube and add 100ul of sterile water to dissolve the DNA.
3. Close the tube and incubate for 10 minutes at room temperature.
4. Briefly vortex the tube and then do a quick spin (less than 5000xg) to concentrate the liquid at the bottom.
5. Store the suspended plasmid at -20°C. The DNA is stable for at least one year from date of shipping when stored at -20°C.

RefSeq: [NM_007096.4](#)

RefSeq Size: 1105 bp

RefSeq ORF: 747 bp

Locus ID: 1211

UniProt ID: [P09496](#)

Cytogenetics: 9p13.3

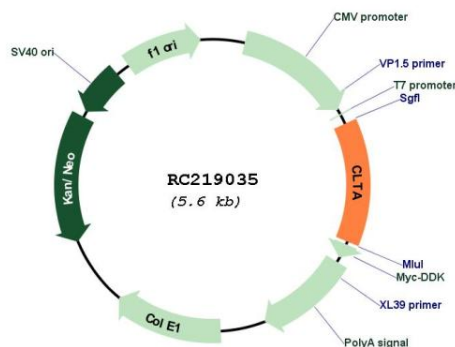
Domains: Clathrin_Ig_ch

Protein Pathways: Endocytosis, Huntington's disease, Lysosome

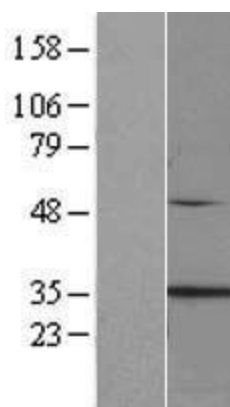
MW: 26.9 kDa

Gene Summary: Clathrin is a large, soluble protein composed of heavy and light chains. It functions as the main structural component of the lattice-type cytoplasmic face of coated pits and vesicles which entrap specific macromolecules during receptor-mediated endocytosis. This gene encodes one of two clathrin light chain proteins which are believed to function as regulatory elements. Alternative splicing results in multiple transcript variants. Related pseudogenes have been identified on chromosomes 8 and 12. [provided by RefSeq, May 2010]

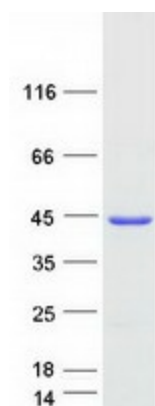
Product images:



Circular map for RC219035



Western blot validation of overexpression lysate (Cat# [LY416209]) using anti-DDK antibody (Cat# [TA50011-100]). Left: Cell lysates from untransfected HEK293T cells; Right: Cell lysates from HEK293T cells transfected with RC219035 using transfection reagent MegaTran 2.0 (Cat# [TT210002]).



Coomassie blue staining of purified CLTA protein (Cat# [TP319035]). The protein was produced from HEK293T cells transfected with CLTA cDNA clone (Cat# RC219035) using MegaTran 2.0 (Cat# [TT210002]).