

Product datasheet for RC219033

TFPI (NM_006287) Human Tagged ORF Clone

Product data:

Product Type:	Expression Plasmids
Product Name:	TFPI (NM_006287) Human Tagged ORF Clone
Tag:	Myc-DDK
Symbol:	TFPI
Synonyms:	EPI; LACI; TFI; TFPI1
Mammalian Cell Selection:	Neomycin
Vector:	pCMV6-Entry (PS100001)
E. coli Selection:	Kanamycin (25 ug/mL)
ORF Nucleotide Sequence:	>RC219033 representing NM_006287 Red=Cloning site Blue=ORF Green=Tags(s)

TTTTGTAATACGACTCACTATAGGGCGGCCGGAATTCGTCGACTGGATCCGGTACCGAGGAGATCTGCC
GCC**CGATCGCC**

ATGATTTACACAATGAAGAAAGTACATGCACTTTGGGCTTCTGTATGCCTGCTGCTTAATCTTGCCCTG
CCCCTCTAATGCTGATTCTGAGGAAGATGAAGAACACACAATTATCACAGATACGGAGTTGCCACCACT
GAAACTTATGCATTCATTTGTGCATTCAAGCGGATGATGGCCCATGAAAGCAATCATGAAAAGATT
TTCTTCAATATTTCACTCGACAGTGCGAAGAATTTATATATGGGGATGTGAAGGAAATCAGAATCGAT
TTGAAAGTCTGGAAGAGTGCAAAAAATGTGTACAAGAGATAATGCAAACAGGATTATAAAGACAACATT
GCAACAAGAAAAGCCAGATTTCTGCTTTTTGGAAGAAGATCCTGGAATATGTCGAGGTTATATTACCAGG
TATTTTTATAACAATCAGACAAAACAGTGTGAACGTTTCAAGTATGGTGGATGCCTGGGCAATATGAACA
ATTTTGAGACACTGGAAGAATGCAAGAACATTTGTGAAGATGGTCCGAATGGTTTCCAGGTGGATAATTA
TGAACCCAGCTCAATGCTGTGAATAACTCCCTGACTCCGCAATCAACCAAGGTTCCAGCTTTTTGAA
TTTCACGGTCCCTCATGGTGTCTCACTCCAGCAGACAGAGGATTTGTGTCGTGCCAATGAGAACAGATTCT
ACTACAATTCAGTCATTGGGAAATGCCGCCATTTAAGTACAGTGGATGTGGGGAAATGAAAACAATTT
TACTTCCAAAACAAGAATGTCTGAGGGCATGTAAAAAGGTTTCATCCAAGAATATCAAAAGGAGGCCTA
ATTAACCAAAAAGAAAAGAAAAGCAGAGAGTGAAAAATAGCATATGAAGAAATTTTGTAAAAATA
TG

ACGCGTACGCGGCCGCTCGAGCAGAACTCATCTCAGAAGAGGATCTGGCAGCAATGATATCCTGGATT
ACAAGGATGACGACGATAAGGTTTAA



[View online »](#)

Protein Sequence: >RC219033 representing NM_006287
Red=Cloning site Green=Tags(s)

MIYTMKKVHALWASVCLLLNLAPAPLNADSEEDDEHTIITDELPLPLKLMHSFCAFKADDGPKCAIMKRF
 FFNIFTRQCEEF IYGGCEGNQNRFESELECKMCTRDNANRI IKTTLQQEKPDFCFLEEDPGICRGYITR
 YFYNNQTKQ CERFKYGGCLGNMNNFETLEECKNICEDGPNGFQVDNYGTQLNAVNNSLTPQSTKVP SLFE
 FHGPSWCLTPADRGLCRANENRFYNSVIGKCRPFKYSGCGNENNFTSKQECLRACKKGF IQRISKGGL
 IKTKRKRKKQRVKIA YEEIFVKNM

TRTRPLEQKLISEEDLAANDILDYKDDDDKV

Chromatograms: https://cdn.origene.com/chromatograms/mk6111_c01.zip

Restriction Sites: SgfI-MluI

Cloning Scheme:

Cloning sites used for ORF Shuttling:



* The last codon before the Stop codon of the ORF

ACCN: NM_006287

ORF Size: 912 bp

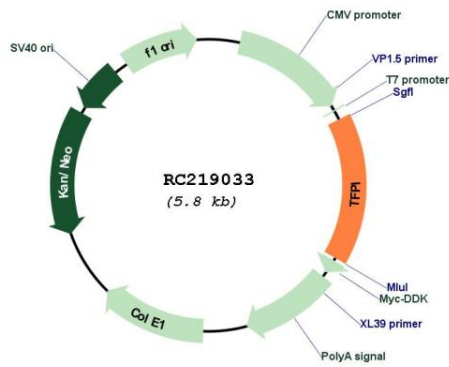
OTI Disclaimer: The molecular sequence of this clone aligns with the gene accession number as a point of reference only. However, individual transcript sequences of the same gene can differ through naturally occurring variations (e.g. polymorphisms), each with its own valid existence. This clone is substantially in agreement with the reference, but a complete review of all prevailing variants is recommended prior to use. [More info](#)

OTI Annotation: This clone was engineered to express the complete ORF with an expression tag. Expression varies depending on the nature of the gene.

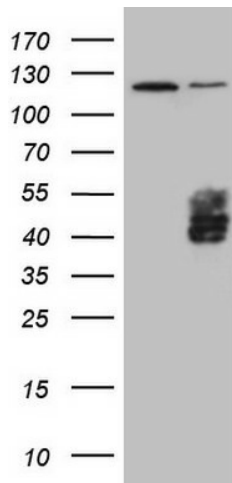
Components: The ORF clone is ion-exchange column purified and shipped in a 2D barcoded Matrix tube containing 10ug of transfection-ready, dried plasmid DNA (reconstitute with 100 ul of water).

Reconstitution Method:	<ol style="list-style-type: none">1. Centrifuge at 5,000xg for 5min.2. Carefully open the tube and add 100ul of sterile water to dissolve the DNA.3. Close the tube and incubate for 10 minutes at room temperature.4. Briefly vortex the tube and then do a quick spin (less than 5000xg) to concentrate the liquid at the bottom.5. Store the suspended plasmid at -20°C. The DNA is stable for at least one year from date of shipping when stored at -20°C.
RefSeq:	NM_006287.6
RefSeq Size:	1431 bp
RefSeq ORF:	915 bp
Locus ID:	7035
UniProt ID:	P10646
Cytogenetics:	2q32.1
Domains:	KU
Protein Families:	Secreted Protein
Protein Pathways:	Complement and coagulation cascades
MW:	35.02 kDa
Gene Summary:	<p>This gene encodes a Kunitz-type serine protease inhibitor that regulates the tissue factor (TF)-dependent pathway of blood coagulation. The coagulation process initiates with the formation of a factor VIIa-TF complex, which proteolytically activates additional proteases (factors IX and X) and ultimately leads to the formation of a fibrin clot. The product of this gene inhibits the activated factor X and VIIa-TF proteases in an autoregulatory loop. Inhibition of the encoded protein restores hemostasis in animal models of hemophilia. This gene encodes multiple protein isoforms that differ in their inhibitory activity, specificity and cellular localization. [provided by RefSeq, Jul 2016]</p>

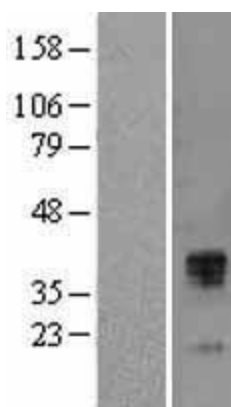
Product images:



Circular map for RC219033



HEK293T cells were transfected with the pCMV6-ENTRY control (Cat# [PS100001], Left lane) or pCMV6-ENTRY TFPI (Cat# RC219033, Right lane) cDNA for 48 hrs and lysed. Equivalent amounts of cell lysates (5 ug per lane) were separated by SDS-PAGE and immunoblotted with anti-TFPI (Cat# [TA805999]). Positive lysates [LY401895] (100ug) and [LC401895] (20ug) can be purchased separately from OriGene.



Western blot validation of overexpression lysate (Cat# [LY401895]) using anti-DDK antibody (Cat# [TA50011-100]). Left: Cell lysates from untransfected HEK293T cells; Right: Cell lysates from HEK293T cells transfected with RC219033 using transfection reagent MegaTran 2.0 (Cat# [TT210002]).