

Product datasheet for RC219030

SORCS1 (NM_052918) Human Tagged ORF Clone

Product data:

Product Type:	Expression Plasmids
Product Name:	SORCS1 (NM_052918) Human Tagged ORF Clone
Tag:	Myc-DDK
Symbol:	SORCS1
Synonyms:	hSorCS
Mammalian Cell Selection:	Neomycin
Vector:	pCMV6-Entry (PS100001)
E. coli Selection:	Kanamycin (25 ug/mL)
ORF Nucleotide Sequence:	>RC219030 representing NM_052918 Red=Cloning site Blue=ORF Green=Tags(s)

TTTTGTAATACGACTCACTATAGGGCGGCCGGAATTCGTCGACTGGATCCGGTACCGAGGAGATCTGCC
GCC**CGATCGCC**

ATGGGAAAAGTTGGCGCCGGCGGGCTCCCAAGCCGGCTGAGCGCGCTCCTCGCCGGCGGGGCTCT
TGATCCTCTGCGCCCCGGCGTCTGCGCGGGCGCTCCTGCTGCCCTCGCCGACCCCAGCTCCGCTCC
ACGCTCGGCTCGACCCCTAGGGCTTTTCCCACAGGGCGGCCAGGCAGGGCTCCTGCCACGCCCTG
CCCCTCGTAGTGGTCCCCTGTTCTCAGTGGCCCCGGGACCGAGCGCTATCCCTGGAGCGGGCTCGG
GCACTGGGGCATCCATGGCGTTGCTGCACGCTCCGGCCGAGGAGACGGAGCGGAGCGGATCAGGAGAA
GGCAGAACGGGGAGAGGGCGCGAGTCGGAGCCCCGGGAGTGCTAAGAGATGGAGGGCAGCAGGAGCCT
GGGACTCGGGAGCGGGACCCGGACAAAGCCACCCGCTTCCGGATGGAGGAGCTGAGACTGACCAGACCA
CGTTTGGCTGACGGGAGACTCAGCACACAACCAAGCCATGGTCCACTGGTCTGGCCACAACAGCAGCGT
GATTCTCATTTTGACAAAGCTCTATGACTATAACCTGGGAGCATCACAGAGAGCTCGCTTTGGAGGTCA
ACCGATTATGGAACAACCTATGAGAAGCTGAATGATAAAGTTGGTTTGAACCATTGAGCTATCTCT
ATGTGTCTACCAACAAGCGTAAGATAATGTTACTCACAGACCCGAGATTGAGAGCAGTTTATTGAT
CAGCTCAGATGAAGGGGCAACTTATCAAAGTACCGCTGAACTTCTACATTCAAAGCTTGCTTTTTCAC
CCCAAACAAGAAGACTGGATTCTGGCATACAGTCAAGACCAAAAGTTATACAGCTGCTGAATTTGGGA
GAAGATGGCAGCTTATCCAAGAAGGGTGTACCAAACAGGTTCTACTGGTCTGTGATGGGGTCAAATAA
AGAACCAGACCTTGTGCATCTTGGAGCCAGAAGTGGATGGTCACTTACATTATCTAAGTGGCGAATG
CAGAAGTGTACAGAGGCCAACAGGAATCAGCCTTTCCAGGCTACATTGACCCAGACTCTTTGATTGTT
AGGATCATTATGTGTTTGTTCAGCTGACATCAGGAGGGCGCCACATTACTACGTGCTCCTACCGAAGGAA
TGCATTTGCCAAATGAAGCTTCCGAAATATGCTTTGCCAAGGACATGCATGTTATCAGACCCGATGAG
AATCAGGTGTTCCGAGCGGTCCAAGAATGGAACAGAATGACACGTACAACCTCTACATCTCAGACACAC
GTGGTGTCTACTTCAACCCTGGCCTTGAGAATGTCCAGAGCAGCAGAGGCCCTGAGGGCAACATCATGAT
CGACCTCTATGAGGTAGCAGGATAAAGGAATGTTCTTGGCTAACAGAAGATTGACAACCAAGTGAAG



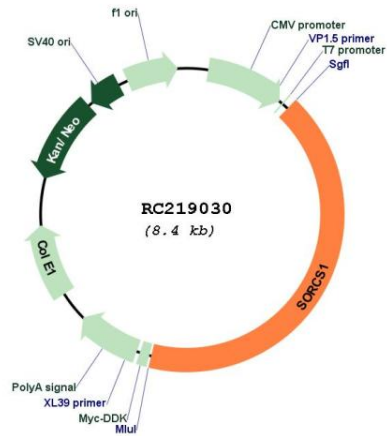
[View online »](#)

ACTTTCATCACATATAACAAAGGCAGAGACTGGCGTTTGCTGCAGGCGCCGGACACGGATCTAAGGGGG
ACCCCGTGCAGTCTTGCTGCCCTATTGCTCACTACACCTTACCTGAAGGTCTCTGAGAATCCCTACAC
ATCAGGGATCATTGCCAGCAAAGACACAGCTCCAAGCATCATAGTGGCATCAGGTAATATAGGTTCTGAA
TTGTGACACACTGACATCAGCATGTTTGTCTCTCAGATGCAGGGAACACCTGGAGACAGATCTTTGAAG
AAGAGCACAGTGTGGTACCTGGATCAAGGTGGAGTCTGGTTGCTATGAAACACACATCTCTCCCAAT
TCGACATCTTTGGTTGAGTTTTGATGAAGGGAGATCTTGAGCAAATACAGTTTACATCTATTCCACTT
TTTGTGGATGGGTTCTGGGTGAGCCTGGAGAAGAGACTCTCATCATGACAGTGTGGACACTTCAGCC
ACCGCTCTGAATGGCAGCTGGTCAAAGTAGATTACAAGTCCATTTTTGATAGACGGTGTGCCGAAGAGGA
CTACAGACCTTGGCAGCTGCACAGCCAGGGGAAGCATGTATCATGGGAGCAAAAAGGATATATAAGAAG
CGAAAATCAGAGCGGAAGTGATGCAAGGAAAATATGCAGGAGCTATGGAATCTGAACCTGTGTCTGCA
CTGAGGCTGATTTTATTGCGACTATGGTTATGAGCGACACAGCAATGGCCAGTGCCTGCCGGCATTG
GTTCAATCCATCCTCTGTCAAAGATTGCAGCTTGGGACAGAGTTACCTCAATAGTACTGGGTACAGG
AAGGTGGTTTCCAATAATTGCAGTGTGGCGTAAGGGAACAGTACACTGCCAAACCGAGAAGTGCCAG
GGAAAGCCCCGCGGGGCTGCGGATAGTACGGCTGATGGAAAGCTGACAGCGGAACAAGGACACAACGT
CACTCTCATGGTCAATTAGAAGAGGGTATGTTCAAGCGACACTCATCAAGTGGACTTTGGCGATGGT
ATCGCGGTGTCTTACGTCAATCTCAGCTCCATGGAAGATGGGATCAAACAGTCTATCAGAACGTGGGCA
TTTTCCGTGTGACCGTGCAGGTGGACAACAGTCTGGGTTCTGACAGCGCCGTCTGTACTTACATGTAAC
TTGTCCCTTGGAGCAGTGCACCTGTCTTCCCTTTGTCAACCAAAGAACAAGAGGTCAATGCGACG
GCAGTGTGTGGCCAGCCAAGTGGCACCCCTCACTTACGTGTGGTGGTACGGAAACAACACGGAGCCTT
TGATCACCTTGGAGGGAAGCATATCCTTCAGATTTACTTCAGAAGGAATGAATACCATCACAGTGCAGGT
CTCAGCTGGGAATGCCATCCTACAAGACACAAAGACCATCGCAGTATATGAGGAATTCGGTCTCTTCGC
TTGTCTTTTCTCAAACCTGGATGACTACAACCCGGACATCCCTGAGTGGAGGAGGACATCGGTGAG
TCATCAAAAAATCCCTGGTGAAGCCACAGGGTTCCAGGCCAGCACATCCTGGTGGCGGTGCTCCCTGG
CTTACCCACCACTGCTGAACTCTTGTCTTACCCTATCAGGATCCAGCTGGAGAAAAACAAGGTCAACT
GATGACCTGGAGCAGATATCAGAATTGCTGATCCACACGCTCAACCAAACTCAGTACACTTCGAGCTGA
AGCCAGGAGTCCGAGTCTTGTCCATGCTGCTCACTTAACAGCGGCCCCCTGGTGGACCTCACTCCAAC
CCACAGTGGATCTGCCATGCTGATGCTGCTCAGTGGTGTGTTGGGGCTGGCAGTGTTCGTCATCTAC
AAGTTTAAAGGAGAGTAGCTTTACCCTCCCCTCCCTCCCCTTCTACTCAACCTGGTACTCATCTCTCC
GATTGCAAAGAGCAAGACAGCCACTCCGCCTTCAACGCCAAAGCGGGATCTGCTGGGACAGTATGC
AATT

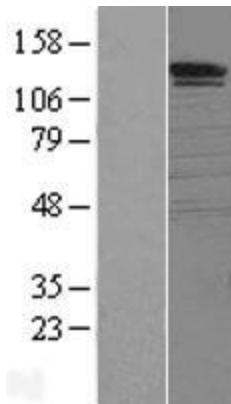
ACGCGTACGCGGCCGCTCGAGCAGAAACTCATCTCAGAAGAGGATCTGGCAGCAAATGATATCCTGGATT
ACAAGGATGACGACGATAAGGTTTAA

OTI Disclaimer:	The molecular sequence of this clone aligns with the gene accession number as a point of reference only. However, individual transcript sequences of the same gene can differ through naturally occurring variations (e.g. polymorphisms), each with its own valid existence. This clone is substantially in agreement with the reference, but a complete review of all prevailing variants is recommended prior to use. More info
OTI Annotation:	This clone was engineered to express the complete ORF with an expression tag. Expression varies depending on the nature of the gene.
Components:	The ORF clone is ion-exchange column purified and shipped in a 2D barcoded Matrix tube containing 10ug of transfection-ready, dried plasmid DNA (reconstitute with 100 ul of water).
Reconstitution Method:	<ol style="list-style-type: none">1. Centrifuge at 5,000xg for 5min.2. Carefully open the tube and add 100ul of sterile water to dissolve the DNA.3. Close the tube and incubate for 10 minutes at room temperature.4. Briefly vortex the tube and then do a quick spin (less than 5000xg) to concentrate the liquid at the bottom.5. Store the suspended plasmid at -20°C. The DNA is stable for at least one year from date of shipping when stored at -20°C.
RefSeq:	NM_052918.5
RefSeq Size:	7272 bp
RefSeq ORF:	3507 bp
Locus ID:	114815
UniProt ID:	Q8WY21
Cytogenetics:	10q25.1
Domains:	PKD, BNR, VPS10
Protein Families:	Druggable Genome, Transmembrane
MW:	129.5 kDa
Gene Summary:	<p>This gene encodes one family member of vacuolar protein sorting 10 (VPS10) domain-containing receptor proteins. The VPS10 domain name comes from the yeast carboxypeptidase Y sorting receptor Vps10 protein. Members of this gene family are large with many exons but the CDS lengths are usually less than 3700 nt. Very large introns typically separate the exons encoding the VPS10 domain; the remaining exons are separated by much smaller-sized introns. These genes are strongly expressed in the central nervous system. Two of the five family members (sortilin and sortilin-related receptor) are synthesized as preproteins; it is not yet known if this encoded protein is also a preproprotein. Alternatively spliced transcript variants encoding different isoforms have been identified. [provided by RefSeq, Jul 2008]</p>

Product images:



Circular map for RC219030



Western blot validation of overexpression lysate (Cat# [LY403270]) using anti-DDK antibody (Cat# [TA50011-100]). Left: Cell lysates from untransfected HEK293T cells; Right: Cell lysates from HEK293T cells transfected with RC219030 using transfection reagent MegaTran 2.0 (Cat# [TT210002]).