

Product datasheet for RC219028

Kallikrein 14 (KLK14) (NM_022046) Human Tagged ORF Clone

Product data:

Product Type:	Expression Plasmids
Product Name:	Kallikrein 14 (KLK14) (NM_022046) Human Tagged ORF Clone
Tag:	Myc-DDK
Symbol:	Kallikrein 14
Synonyms:	KLK-L6
Mammalian Cell Selection:	Neomycin
Vector:	pCMV6-Entry (PS100001)
E. coli Selection:	Kanamycin (25 ug/mL)
ORF Nucleotide Sequence:	>RC219028 ORF sequence Red=Cloning site Blue=ORF Green=Tags(s)

TTTTGTAATACGACTCACTATAGGGCGGCCGGAATTCGTCGACTGGATCCGGTACCGAGGAGATCTGCC
GCC**CGATCGCC**

ATGTCCCTGAGGGTCTTGGGCTCTGGGACCTGGCCCTCAGCCCCTAAAATGTTCTCTCTGCTGACAGCAC
TTCAAGTCCTGGCTATAGCCATGACACAGAGCCAAGAGGATGAGAACAAGATAATTGGTGGCCATACGTG
CACCCGGAGCTCCAGCCGTGGCAGGCGGCCCTGCTGGCGGGTCCAGGGCGCGCTTCTCTGCGGAGGC
GCCCTGCTTTAGGCCAGTGGGTCACTGCTGCTCACTGCGGCCGCCGATCCTTCAGGTTGCCCTGG
GCAAGCACAACCTGAGGAGGTGGGAGGCCACCCAGCAGGTGCTGCGCGTGGTTCGTCAGGTGACGCACCC
CAACTACAACCTCCGGACCCACGACAACGACCTCATGCTGCTGCAGCTACAGCAGCCCGCAGGATCGGG
AGGGCAGTCAGGCCATTGAGGTCAACCCAGGCCTGTGCCAGCCCCGGGACCTCCTGCCGAGTGTCAGGCT
GGGGAACATATCCAGCCCCATCGCCAGGTACCCCGCCTCTCTGCAATGCGTGAACATCAACATCTCCCC
GGATGAGGTGTGCCAGAAGGCCTATCCTAGAACCATCACGCCTGGCATGGTCTGTGCAGGAGTCCCCAG
GGCGGGAAGGACTCTTGTGAGGGTACTCTGGGGACCCCTGGTGTGCAGAGGACAGCTCCAGGGCCTCG
TGTCTTGGGGAATGGAGCGCTGCGCCCTGCCTGGCTACCCCGGTGCTACACCAACCTGTGCAAGTACAG
AAGCTGGATTGAGGAAACGATGCGGGACAAA

ACGCGTACGCGGCCGCTCGAGCAGAAACTCATCTCAGAAGAGGATCTGGCAGCAAATGATATCCTGGATT
ACAAGGATGACGACGATAAGGTTTAA



[View online »](#)

Protein Sequence: >RC219028 protein sequence
 Red=Cloning site Green=Tags(s)

MSLRVLVSGTWPSPKMFLLLTALQVLAIAMTQSQEDENKIIGGHTCTRSSQPWQAALLAGPRRFLCGG
 ALLSGQWVITAAHCGRPILQVALGKHNLRRWEATQQVLRVVRQVTHPNYSRTHDNDLMLLQLQQPARIG
 RAVRPIEVTQACASPGTSCRVSQWGTISSPIARYPASLQCVNINISPDVCQKAYPRITITPMVCAGVPQ
 GGKDSCQGDSSGGLVCRGQLQGLVSWGMECALPGYPGVYTNLCKYRSWIEETMRDK

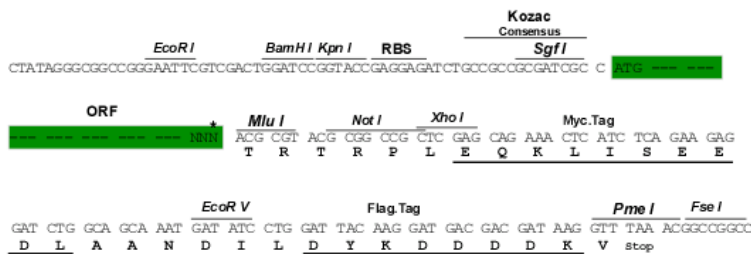
TRTRPLEQKLISEEDLAANDILDYKDDDDKV

Chromatograms: https://cdn.origene.com/chromatograms/mk6112_a03.zip

Restriction Sites: SgfI-MluI

Cloning Scheme:

Cloning sites used for ORF Shuttling:



* The last codon before the Stop codon of the ORF

ACCN: NM_022046

ORF Size: 801 bp

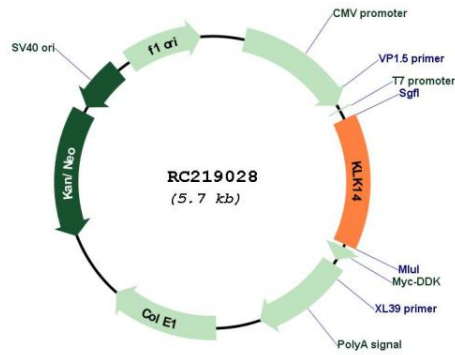
OTI Disclaimer: Due to the inherent nature of this plasmid, standard methods to replicate additional amounts of DNA in E. coli are highly likely to result in mutations and/or rearrangements. Therefore, OriGene does not guarantee the capability to replicate this plasmid DNA. Additional amounts of DNA can be purchased from OriGene with batch-specific, full-sequence verification at a reduced cost. Please contact our customer care team at custsupport@origene.com or by calling 301.340.3188 option 3 for pricing and delivery.

The molecular sequence of this clone aligns with the gene accession number as a point of reference only. However, individual transcript sequences of the same gene can differ through naturally occurring variations (e.g. polymorphisms), each with its own valid existence. This clone is substantially in agreement with the reference, but a complete review of all prevailing variants is recommended prior to use. [More info](#)

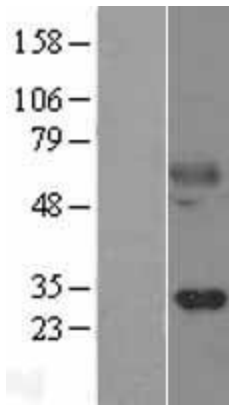
OTI Annotation: This clone was engineered to express the complete ORF with an expression tag. Expression varies depending on the nature of the gene.

Components:	The ORF clone is ion-exchange column purified and shipped in a 2D barcoded Matrix tube containing 10ug of transfection-ready, dried plasmid DNA (reconstitute with 100 ul of water).
Reconstitution Method:	<ol style="list-style-type: none">1. Centrifuge at 5,000xg for 5min.2. Carefully open the tube and add 100ul of sterile water to dissolve the DNA.3. Close the tube and incubate for 10 minutes at room temperature.4. Briefly vortex the tube and then do a quick spin (less than 5000xg) to concentrate the liquid at the bottom.5. Store the suspended plasmid at -20°C. The DNA is stable for at least one year from date of shipping when stored at -20°C.
RefSeq:	<u>NM_022046.5</u> , <u>NP_071329.2</u>
RefSeq Size:	1133 bp
RefSeq ORF:	756 bp
Locus ID:	43847
UniProt ID:	<u>Q9P0G3</u>
Cytogenetics:	19q13.41
Protein Families:	Druggable Genome, Protease, Secreted Protein
MW:	29.1 kDa
Gene Summary:	This gene encodes a member of the kallikrein subfamily of serine proteases that have diverse physiological functions such as regulation of blood pressure and desquamation. The altered expression of this gene is implicated in the progression of different cancers including breast and prostate tumors. The encoded protein is a precursor that is proteolytically processed to generate the functional enzyme. This gene is one of the fifteen kallikrein subfamily members located in a cluster on chromosome 19. Alternative splicing results in multiple transcript variants. [provided by RefSeq, Jul 2015]

Product images:



Circular map for RC219028



Western blot validation of overexpression lysate (Cat# [LY402900]) using anti-DDK antibody (Cat# [TA50011-100]). Left: Cell lysates from untransfected HEK293T cells; Right: Cell lysates from HEK293T cells transfected with RC219028 using transfection reagent MegaTran 2.0 (Cat# [TT210002]).