

Product datasheet for RC219027

IL29 (IFNL1) (NM_172140) Human Tagged ORF Clone

Product data:

Product Type: Expression Plasmids
Product Name: IL29 (IFNL1) (NM_172140) Human Tagged ORF Clone
Tag: Myc-DDK
Symbol: IL29
Synonyms: IL-29; IL29
Mammalian Cell Selection: Neomycin
Vector: pCMV6-Entry (PS100001)
E. coli Selection: Kanamycin (25 ug/mL)
ORF Nucleotide Sequence: >RC219027 ORF sequence
 Red=Cloning site Blue=ORF Green=Tags(s)

TTTTGTAATACGACTCACTATAGGGCGGCCGGAATTCGTCGACTGGATCCGGTACCGAGGAGATCTGCC
GCC**CGATCGCC**

ATGGCTGCAGCTTGGACCGTGGTGTGCTGGTACTTTGGTGTCTAGGCTTGGCCGTGGCAGGCCCTGTCCCA
CTTCCAAGCCCACCACAACCTGGGAAGGGCTGCCACATTGGCAGGTTCAAATCTCTGTACCACAGGAGCT
AGCGAGCTTCAAGAAGGCCAGGGACGCCTTGAAGAGTCACTCAAGCTGAAAACTGGAGTTGCAGCTCT
CCTGTCTTCCCCGGAATTGGGACCTGAGGCTTCTCCAGGTGAGGGAGCGCCCTGTGCCCTTGAGGCTG
AGCTGGCCCTGACGCTGAAGTCTGGAGCGCTGCTGGCCAGCCCTGGAGGACGTCCTAGACCAGCC
CCTTACACCCTGCACCACATCCTCTCCAGCTCCAGGCCTGTATCCAGCCTCAGCCACAGCAGGGCCC
AGGCCCGGGCCGCCTCCACCCTGGCTGCACCGCTCCAGGAGGCCCAAAAAGGAGTCCGCTGGCT
GCCTGGAGGCATCTGTACCTTCAACCTTCCGCCTCCTCACGGAGACCTCAAATATGTGGCCGATGG
GAACCTGTGTCTGAGAACGTCAACCCACCTGAGTCCACC

ACGCGTACGCGGCCGCTCGAGCAGAACTCATCTCAGAAGAGGATCTGGCAGCAAATGATATCCTGGATT
ACAAGGATGACGACGATAAGGTTTAA

Protein Sequence: >RC219027 protein sequence
 Red=Cloning site Green=Tags(s)

MAAAWTVLVTLVGLAVAGPVPTSKPTTTGKGCHIGRFKSLSPQELASFKKARDALEESLKLKNWSCSS
PVFPGNWDLRLLQVRERPVALEAELALTLKVLEAAAGPALEDVLDQPLHLHHILSQLQACIQPQPTAGP
RPRGRLHHWLRHQEAPKKESAGCLEASVTFNLFRLTRDLKYVADGNLCLRTSTHPEST

TRTRPLEQKLISEEDLAANDILDYKDDDDKV



[View online »](#)

Chromatograms: https://cdn.origene.com/chromatograms/mk6464_d10.zip

Restriction Sites: SgfI-MluI

Cloning Scheme:



ACCN: NM_172140

ORF Size: 600 bp

OTI Disclaimer: The molecular sequence of this clone aligns with the gene accession number as a point of reference only. However, individual transcript sequences of the same gene can differ through naturally occurring variations (e.g. polymorphisms), each with its own valid existence. This clone is substantially in agreement with the reference, but a complete review of all prevailing variants is recommended prior to use. [More info](#)

OTI Annotation: This clone was engineered to express the complete ORF with an expression tag. Expression varies depending on the nature of the gene.

Components: The ORF clone is ion-exchange column purified and shipped in a 2D barcoded Matrix tube containing 10ug of transfection-ready, dried plasmid DNA (reconstitute with 100 ul of water).

Reconstitution Method:

1. Centrifuge at 5,000xg for 5min.
2. Carefully open the tube and add 100ul of sterile water to dissolve the DNA.
3. Close the tube and incubate for 10 minutes at room temperature.
4. Briefly vortex the tube and then do a quick spin (less than 5000xg) to concentrate the liquid at the bottom.
5. Store the suspended plasmid at -20°C. The DNA is stable for at least one year from date of shipping when stored at -20°C.

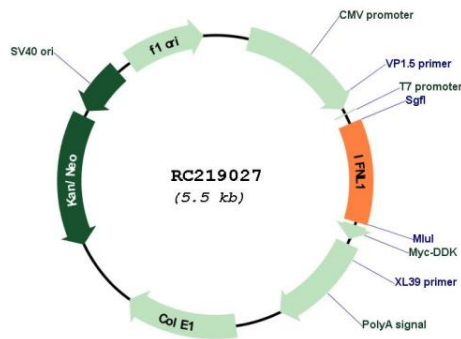
Note: Plasmids are not sterile. For experiments where strict sterility is required, filtration with 0.22um filter is required.

RefSeq: [NM_172140.2](#)

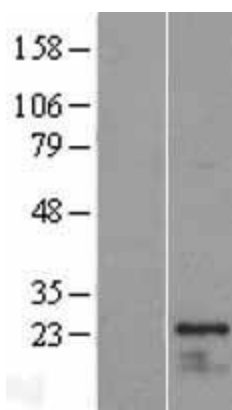
RefSeq Size: 856 bp

RefSeq ORF:	603 bp
Locus ID:	282618
UniProt ID:	Q8IU54
Cytogenetics:	19q13.2
Protein Families:	Druggable Genome, Secreted Protein, Transmembrane
Protein Pathways:	Cytokine-cytokine receptor interaction, Jak-STAT signaling pathway
MW:	21.9 kDa
Gene Summary:	This gene encodes a cytokine distantly related to type I interferons and the IL-10 family. This gene, interleukin 28A (IL28A), and interleukin 28B (IL28B) are three closely related cytokine genes that form a cytokine gene cluster on a chromosomal region mapped to 19q13. Expression of the cytokines encoded by the three genes can be induced by viral infection. All three cytokines have been shown to interact with a heterodimeric class II cytokine receptor that consists of interleukin 10 receptor, beta (IL10RB) and interleukin 28 receptor, alpha (IL28RA). [provided by RefSeq, Jul 2008]

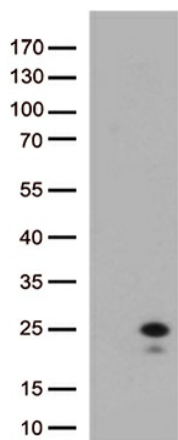
Product images:



Circular map for RC219027



Western blot validation of overexpression lysate (Cat# [LY406854]) using anti-DDK antibody (Cat# [TA50011-100]). Left: Cell lysates from untransfected HEK293T cells; Right: Cell lysates from HEK293T cells transfected with RC219027 using transfection reagent MegaTran 2.0 (Cat# [TT210002]).



HEK293T cells were transfected with the pCMV6-ENTRY control (Cat# [PS100001], Left lane) or pCMV6-ENTRY IFNL1 (Cat# RC219027, Right lane) cDNA for 48 hrs and lysed. Equivalent amounts of cell lysates (5 ug per lane) were separated by SDS-PAGE and immunoblotted with anti-IFNL1 (Cat# [TA812934])(1:500).