

Product datasheet for RC219021L1

FRMD3 (NM_174938) Human Tagged Lenti ORF Clone

Product data:

Product Type:	Expression Plasmids
Product Name:	FRMD3 (NM_174938) Human Tagged Lenti ORF Clone
Tag:	Myc-DDK
Symbol:	FRMD3
Synonyms:	4.1O; EPB41L4O; EPB41LO; P41O
Mammalian Cell Selection:	None
Vector:	pLenti-C-Myc-DDK (PS100064)
E. coli Selection:	Chloramphenicol (34 ug/mL)
ORF Nucleotide Sequence:	The ORF insert of this clone is exactly the same as(RC219021).
Restriction Sites:	SgfI-MluI
Cloning Scheme:	

Cloning sites used for ORF Shuttling:



* The last codon before the Stop codon of the ORF.

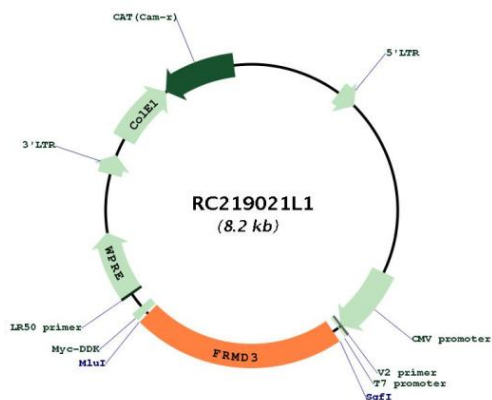
ACCN:	NM_174938
ORF Size:	1791 bp



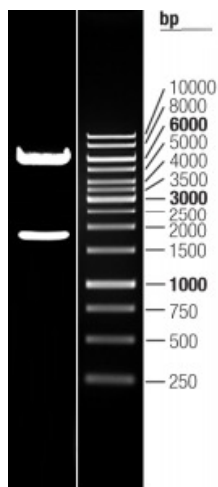
[View online »](#)

OTI Disclaimer:	The molecular sequence of this clone aligns with the gene accession number as a point of reference only. However, individual transcript sequences of the same gene can differ through naturally occurring variations (e.g. polymorphisms), each with its own valid existence. This clone is substantially in agreement with the reference, but a complete review of all prevailing variants is recommended prior to use. More info
OTI Annotation:	This clone was engineered to express the complete ORF with an expression tag. Expression varies depending on the nature of the gene.
Components:	The ORF clone is ion-exchange column purified and shipped in a 2D barcoded Matrix tube containing 10ug of transfection-ready, dried plasmid DNA (reconstitute with 100 ul of water).
Reconstitution Method:	<ol style="list-style-type: none">1. Centrifuge at 5,000xg for 5min.2. Carefully open the tube and add 100ul of sterile water to dissolve the DNA.3. Close the tube and incubate for 10 minutes at room temperature.4. Briefly vortex the tube and then do a quick spin (less than 5000xg) to concentrate the liquid at the bottom.5. Store the suspended plasmid at -20°C. The DNA is stable for at least one year from date of shipping when stored at -20°C.
RefSeq:	NM_174938.4
RefSeq Size:	2529 bp
RefSeq ORF:	1794 bp
Locus ID:	257019
UniProt ID:	A2A2Y4
Cytogenetics:	9q21.32
Protein Families:	Transmembrane
MW:	68.6 kDa
Gene Summary:	The protein encoded by this gene is a single pass membrane protein primarily found in ovaries. A similar protein in erythrocytes helps determine the shape of red blood cells, but the function of the encoded protein has not been determined. There is some evidence that this is a tumor suppressor gene, and there is also evidence linking defects in this gene to susceptibility to diabetic nephropathy in type 1 diabetes. Several transcript variants encoding different isoforms have been found for this gene. [provided by RefSeq, Oct 2011]

Product images:



Circular map for RC219021L1



Double digestion of RC219021L1 using SgfI and MluI