

Product datasheet for RC219016L1

ZFR (NM_016107) Human Tagged Lenti ORF Clone

Product data:

Product Type:	Expression Plasmids
Product Name:	ZFR (NM_016107) Human Tagged Lenti ORF Clone
Tag:	Myc-DDK
Symbol:	ZFR
Synonyms:	SPG71; ZFR1
Mammalian Cell Selection:	None
Vector:	pLenti-C-Myc-DDK (PS100064)
E. coli Selection:	Chloramphenicol (34 ug/mL)
ORF Nucleotide Sequence:	The ORF insert of this clone is exactly the same as(RC219016).
Restriction Sites:	SgfI-MluI
Cloning Scheme:	

Cloning sites used for ORF Shuttling:



* The last codon before the Stop codon of the ORF.

ACCN:	NM_016107
ORF Size:	3222 bp



[View online »](#)

OTI Disclaimer: Due to the inherent nature of this plasmid, standard methods to replicate additional amounts of DNA in E. coli are highly likely to result in mutations and/or rearrangements. Therefore, OriGene does not guarantee the capability to replicate this plasmid DNA. Additional amounts of DNA can be purchased from OriGene with batch-specific, full-sequence verification at a reduced cost. Please contact our customer care team at custsupport@origene.com or by calling 301.340.3188 option 3 for pricing and delivery.

The molecular sequence of this clone aligns with the gene accession number as a point of reference only. However, individual transcript sequences of the same gene can differ through naturally occurring variations (e.g. polymorphisms), each with its own valid existence. This clone is substantially in agreement with the reference, but a complete review of all prevailing variants is recommended prior to use. [More info](#)

OTI Annotation: This clone was engineered to express the complete ORF with an expression tag. Expression varies depending on the nature of the gene.

Components: The ORF clone is ion-exchange column purified and shipped in a 2D barcoded Matrix tube containing 10ug of transfection-ready, dried plasmid DNA (reconstitute with 100 ul of water).

Reconstitution Method:

1. Centrifuge at 5,000xg for 5min.
2. Carefully open the tube and add 100ul of sterile water to dissolve the DNA.
3. Close the tube and incubate for 10 minutes at room temperature.
4. Briefly vortex the tube and then do a quick spin (less than 5000xg) to concentrate the liquid at the bottom.
5. Store the suspended plasmid at -20°C. The DNA is stable for at least one year from date of shipping when stored at -20°C.

RefSeq: [NM_016107.3](#)

RefSeq Size: 4746 bp

RefSeq ORF: 3225 bp

Locus ID: 51663

UniProt ID: [Q96KR1](#)

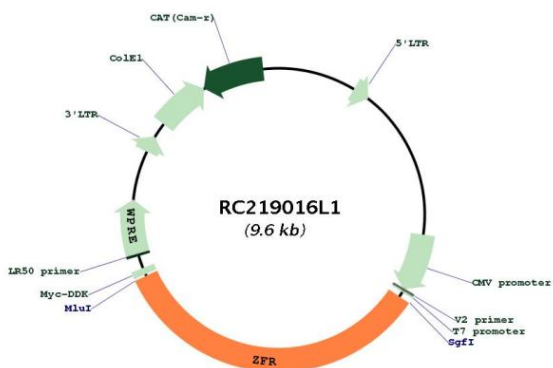
Cytogenetics: 5p13.3

Domains: DZF

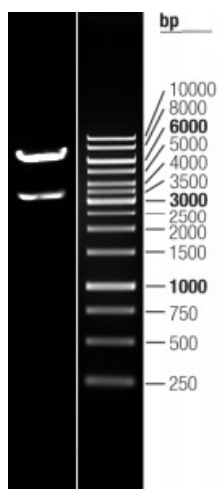
MW: 116.8 kDa

Gene Summary: This gene encodes an RNA-binding protein characterized by its DZF (domain associated with zinc fingers) domain. The encoded protein may play a role in the nucleocytoplasmic shuttling of another RNA-binding protein, Staufin homolog 2, in neurons. Expression of this gene is regulated through alternative polyadenylation that mediates differential microRNA targeting. Elevated expression of this gene has been observed in human patients with pancreatic cancer and knockdown of this gene may result in reduced viability and invasion of pancreatic cancer cells. [provided by RefSeq, Sep 2016]

Product images:



Circular map for RC219016L1



Double digestion of RC219016L1 using SgfI and MluI