

Product datasheet for **RC219007**

bcl 6 (BCL6) (NM_001706) Human Tagged ORF Clone

Product data:

Product Type:	Expression Plasmids
Product Name:	bcl 6 (BCL6) (NM_001706) Human Tagged ORF Clone
Tag:	Myc-DDK
Symbol:	bcl 6
Synonyms:	BCL5; BCL6A; LAZ3; ZBTB27; ZNF51
Mammalian Cell Selection:	Neomycin
Vector:	pCMV6-Entry (PS100001)
E. coli Selection:	Kanamycin (25 ug/mL)



[View online »](#)

**ORF Nucleotide
Sequence:**

>RC219007 representing NM_001706
 Red=Cloning site Blue=ORF Green=Tags(s)

TTTTGTAATACGACTCACTATAGGGCGGCCGGAATTCGTCGACTGGATCCGGTACCGAGGAGATCTGCC
 GCC**GCGATCGCC**

ATGGCCTCGCCGGCTGACAGCTGTATCCAGTTCACCCGCCATGCCAGTGTGTTCTTCTCAACCTTAATC
 GTCTCCGAGTCGAGACATCTTGACTGATGTTGTCATTGTTGTGAGCCGTGAGCAGTTTAGAGCCATAA
 AACGGTCTCATGGCCTGCAGTGGCCTGTTCTATAGCATCTTTACAGACCAGTTGAAATGCAACCTTAGT
 GTGATCAATCTAGATCCTGAGATCAACCCTGAGGGATTCTGCATCCTCTGGACTTCATGTACACATCTC
 GGCTCAATTTGCGGGAGGGCAACATCATGGCTGTGATGGCCACGGCTATGTACCTGCAGATGGAGCATGT
 TGTGGACACTTGGCGGAAGTTTATTAAGGCCAGTGAAGCAGAGATGGTTTCTGCCATCAAGCCTCCTCGT
 GAAGAGTTCCTCAACAGCCGGATGCTGATGCCCAAGACATCATGGCCTATCGGGGTCGTGAGGTGGTGG
 AGAACAACTGCCACTGAGGAGCGCCCTGGGTGTGAGAGCAGAGCCTTTGCCCCAGCCTGTACAGTGG
 CCTGTCCACACCGCCAGCCTCTTATTCCATGTACAGCCACCTCCCTGTCAGCAGCCTCCTTCTCCGAT
 GAGGAGTTTCGGGATGTCGGGATGCCTGTGGCCAAACCCTTCCCAAGGAGCGGGCACTCCCATGTGATA
 GTGCCAGGCCAGTCCCTGGTGTGAGTACAGCCGGCCGACTTTGGAGGTGTCCCCAATGTGTGCCACAGCAA
 TATCTATTCACCAAGGAAACAATCCCAGAAGAGGCACGAAGTGATGCACTACAGTGTGGCTGAGGGC
 CTCAAACCTGTGCCCTCAGCCCGAAATGCCCTACTTCCCTGTGACAAGGCCAGCAAAGAAGAAG
 AGAGACCTCCTCGAAGATGAGATTGCCCTGCATTTGAGCCCCCAATGCACCCTGAACCGGAAGGG
 TCTGGTTAGTCCACAGAGCCCCAGAAATCTGACTGCCAGCCAACTCGCCACAGAGTCTGCAGCAGT
 AAGAATGCCTGCATCCTCAGGCTTCTGGCTCCCTCCAGCCAAGAGCCCACTGACCCAAAGCCTGCA
 ACTGGAAGAAATACAAGTTCATCGTGCTCAACAGCCTCAACCAGAATGCCAAACCAGAGGGGCTGAGCA
 GGCTGAGCTGGGCCGCTTTCCCCACGAGCCTACACGGCCCCACCTGCCTGCCAGCCACCCATGGAGCCT
 GAGAACCTTGACCTCCAGTCCCCAACCAAGCTGAGTGCCAGCGGGGAGGACTCCACCATCCCAAGCCA
 GCCGGCTCAATAACATCGTTAACAGGTCCATGACGGGCTCTCCCGCAGCAGCAGCGAGAGCCACTCACC
 ACTCTACATGCACCCCCGAAGTGCACGTCTGCGGCTCTCAGTCCCACAGCATGCAGAGATGTGCCTC
 CACACCGCTGGCCCCACGTTCCCTGAGGAGATGGGAGAGACCCAGTCTGAGTACTCAGATTCTAGCTGTG
 AGAACGGGCTTCTTCTGCAATGAGTGTGACTGCCGCTTCTCTGAGGAGCCTCACTCAAGAGGCACAC
 GCTGCAGACCCACAGTGACAAACCCTACAAGTGTGACCGCTGCCAGGCCTCCTCCGCTACAAGGGCAAC
 CTCGCCAGCCACAAGACCGTCCATACCGGTGAGAAACCCTATCGTTGCAACATCTGTGGGGCCAGTTCA
 ACCGGCCAGCCAACCTGAAAACCACACTCGAATTCACCTCTGGAGAGAAGCCCTACAAATGCGAAACCTG
 CGGAGCCAGATTTGTACAGGTGGCCACCTCCGTGCCATGTGCTTATCCACACTGGTGAGAAGCCCTAT
 CCCTGTGAAATCTGTGGCACCGTTTCCGGCACCTTCAGACTCTGAAGAGCCACCTGCGAATCCACACAG
 GAGAGAAACCTTACCATTGTGAGAAGTGTAACTGCATTTCCGTCAAAAAGCCAGCTGCGACTTCACTT
 GCGCCAGAAGCATGGCGCCATACCAACACCAAGGTGCAATACCGCGTGTAGCCACTGACCTGCCTCCG
 GAGTCCCCAAAGCCTGC

ACGCGTACGCGGCCGCTCGAGCAGAACTCATCTCAGAAGAGGATCTGGCAGCAAATGATATCCTGGATT
 ACAAGGATGACGACGATAAGGTTTAA

Protein Sequence: >RC219007 representing NM_001706
 Red=Cloning site Green=Tags(s)

MASPADSCIQFTRHASDVLLNLNRLRSRDILTDVVIVVSREQFRAHKTVLMACSGLFYSIFTDQLKCNLS
 VINLDPEINPEGFCILLDFMYTSRLNLREGNIMAVMATAMYLQMEHVVDTCRKF IKASEAEMVSAIKPPR
 EEFLNSRMLMPQDIMAYRGREVENNLPLRSAPGCEsRAFAPSLYSGLSTPPASYSMYSHLPVSSLLFSD
 EEFRDVRMPVANPFPKERALPCDSARVPVGEYSRPTLEVSPNVCHSNIYSPKETIPEEARSDMHYSVAEG
 LKPAAPSARNAPYFPCDKASKEEERPSSEDEIALHFEPNAPLNRKGLVSPQSPQKSDCQPNSPTESSCS
 KNACILQASGSPPAKSPTDPKACNWKYKFIVLNSLNQNAKPEGPEQAELGRLSPRAYTAPPACQPPMEP
 ENLDLQSPTKLSASGEDSTIPQASRLNNIVNRSMTGSPRSSESHPLYMHPPKCTSCGSQSPQHAEMCL
 HTAGPTFPEEMGETQSEYSDSSCENGAFFCNECDCRFSEEASLKRHTLQTHSDKPYKCDRCQASFRYKGN
 LASHKTVHTGEKPYRCNICGAQFNRPANLKTHTRIHSGEKPYKCETCGARFVQVAHLRAHVL IHTGEKPY
 PCEICGTRFRLQLTKSHLRIHTGEKPYHCEKCNLHFRHKSQRLRLHLRQKHGAI TTKVQYRVSATDLPP
 ELPKAC

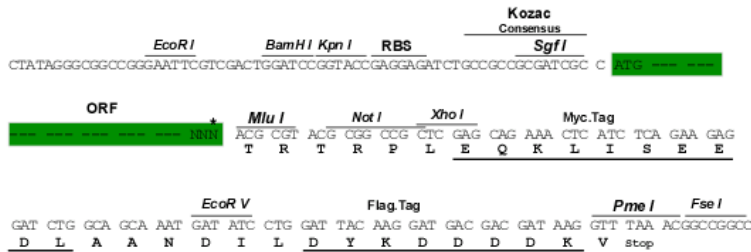
TRTRPLEQKLI SEEDLAANDILDYKDDDDKV

Chromatograms: https://cdn.origene.com/chromatograms/mk6205_d05.zip

Restriction Sites: Sgfl-MluI

Cloning Scheme:

Cloning sites used for ORF Shuttling:



* The last codon before the Stop codon of the ORF

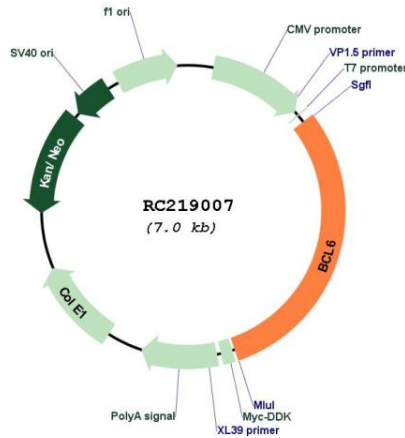
ACCN: NM_001706

ORF Size: 2118 bp

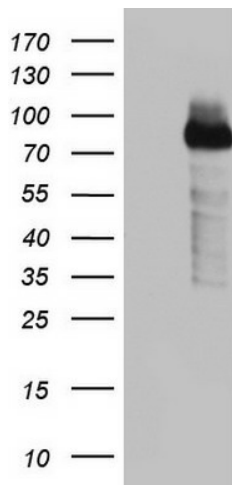
OTI Disclaimer:	<p>Due to the inherent nature of this plasmid, standard methods to replicate additional amounts of DNA in E. coli are highly likely to result in mutations and/or rearrangements. Therefore, OriGene does not guarantee the capability to replicate this plasmid DNA. Additional amounts of DNA can be purchased from OriGene with batch-specific, full-sequence verification at a reduced cost. Please contact our customer care team at custsupport@origene.com or by calling 301.340.3188 option 3 for pricing and delivery.</p> <p>The molecular sequence of this clone aligns with the gene accession number as a point of reference only. However, individual transcript sequences of the same gene can differ through naturally occurring variations (e.g. polymorphisms), each with its own valid existence. This clone is substantially in agreement with the reference, but a complete review of all prevailing variants is recommended prior to use. More info</p>
OTI Annotation:	This clone was engineered to express the complete ORF with an expression tag. Expression varies depending on the nature of the gene.
Components:	The ORF clone is ion-exchange column purified and shipped in a 2D barcoded Matrix tube containing 10ug of transfection-ready, dried plasmid DNA (reconstitute with 100 ul of water).
Reconstitution Method:	<ol style="list-style-type: none"> 1. Centrifuge at 5,000xg for 5min. 2. Carefully open the tube and add 100ul of sterile water to dissolve the DNA. 3. Close the tube and incubate for 10 minutes at room temperature. 4. Briefly vortex the tube and then do a quick spin (less than 5000xg) to concentrate the liquid at the bottom. 5. Store the suspended plasmid at -20°C. The DNA is stable for at least one year from date of shipping when stored at -20°C.
Note:	Plasmids are not sterile. For experiments where strict sterility is required, filtration with 0.22um filter is required.
RefSeq:	NM_001706.5
RefSeq Size:	3537 bp
RefSeq ORF:	2121 bp
Locus ID:	604
UniProt ID:	P41182
Cytogenetics:	3q27.3
Domains:	BTB, zf-C2H2
Protein Families:	Druggable Genome, Transcription Factors
MW:	78.7 kDa

Gene Summary:

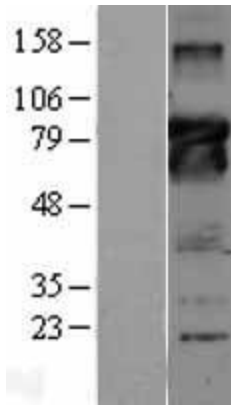
The protein encoded by this gene is a zinc finger transcription factor and contains an N-terminal POZ domain. This protein acts as a sequence-specific repressor of transcription, and has been shown to modulate the transcription of STAT-dependent IL-4 responses of B cells. This protein can interact with a variety of POZ-containing proteins that function as transcription corepressors. This gene is found to be frequently translocated and hypermutated in diffuse large-cell lymphoma (DLCL), and may be involved in the pathogenesis of DLCL. Alternatively spliced transcript variants encoding different protein isoforms have been found for this gene. [provided by RefSeq, Aug 2015]

Product images:


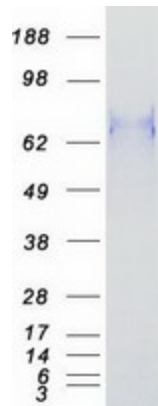
Circular map for RC219007



HEK293T cells were transfected with the pCMV6-ENTRY control (Cat# [PS100001], Left lane) or pCMV6-ENTRY BCL6 (Cat# RC219007, Right lane) cDNA for 48 hrs and lysed. Equivalent amounts of cell lysates (5 ug per lane) were separated by SDS-PAGE and immunoblotted with anti-BCL6 (Cat# [TA803402]). Positive lysates [LY400639] (100ug) and [LC400639] (20ug) can be purchased separately from OriGene.



Western blot validation of overexpression lysate (Cat# [LY400639]) using anti-DDK antibody (Cat# [TA50011-100]). Left: Cell lysates from untransfected HEK293T cells; Right: Cell lysates from HEK293T cells transfected with RC219007 using transfection reagent MegaTran 2.0 (Cat# [TT210002]).



Coomassie blue staining of purified BCL6 protein (Cat# [TP319007]). The protein was produced from HEK293T cells transfected with BCL6 cDNA clone (Cat# RC219007) using MegaTran 2.0 (Cat# [TT210002]).